

## VGA/DVI/HDMI EDID Emulator

### VC010 / VC060 / VC080

- The ATEN VC010 / VC060 / VC080 is a VGA/DVI/HDMI EDID Emulator, which is designed to emulate and store the EDID of a video display, providing constant and reliable EDID data for the a VGA/DVI/HDMI source device to efficiently optimize video resolution.

The ATEN VGA/DVI/HDMI EDID Emulator is a convenient tool that ensures smooth viewing experience for any video installation. The EDID Emulator provides three flexible methods for selecting and switching between EDID Modes: Default Mode, Programming Mode, and Learning Mode. It comes with an easy-to-use EDID Wizard that allows users to quickly view, store and manage EDID settings.

VC010



VC060



VC080



## Features

- Superior video quality – HDTV resolutions of 480i, 480p, 720i, 720p, 1080i, 1080p (1920 x 1080); VGA, SVGA, XGA, SXGA, UXGA and WUXGA (1920 x 1200)
- **EDID Wizard** – allows a user an easy way to manage EDID settings
- Consumer Electronics Control (CEC) allows interconnected HDMI devices to communicate and respond to one remote control (VC080)
- **EDID mode selection** – Default, Learning, Programming
- HDMI (3D, Deep Color), HDCP compatible (VC080)
- Supports Dolby True HD and DTS HD Master Audio (VC080)
- Automatically manages EDID communication between connected devices
- Signaling rates up to 2.25 Gbits in support of 1080p display
- LED indication of video source devices
- Supports wide screen
- Supports hot-plugging
- Non-Powered\*

\*If the video source is not receiving enough power an external power cord should be connected.

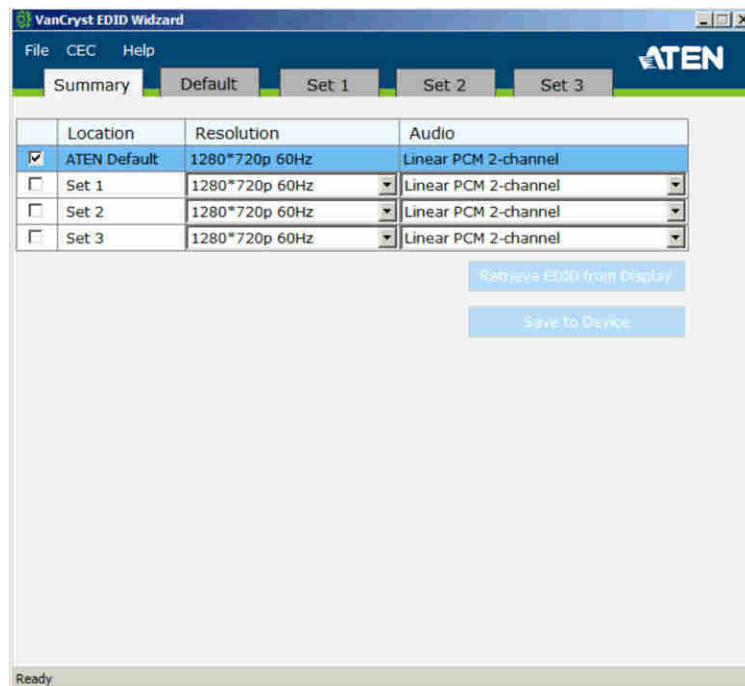
## Highlights

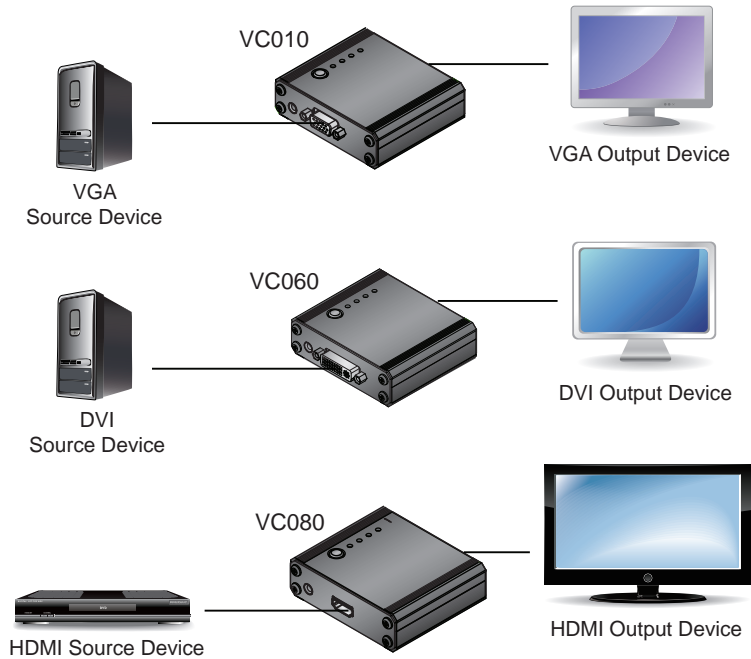
### Intelligent DDC Channel Switch

The previous Emulator only supports EDID signal bi-directional communication – it cannot transmit HDCP over a single channel. With the Intelligent DDC Channel Switch feature, the HDCP bypass or EDID mode can be selected automatically (VC080).

### EDID Wizard

The EDID Wizard application can be downloaded from the ATEN website. The user-friendly GUI can be used to view, configure and store EDID settings.





## Specifications

Function		VC010	VC060	VC080
Connectors	Video In	1 x HDB-15 Female (Blue)	1 x DVI-I Female (White)	1 x HDMI Type A Female (Black)
	Video Out	1 x HDB-15 Female (Blue)	1 x DVI-I Female (White)	1 x HDMI Type A Female (Black)
	RS-232 Port		1 x mini jack (Black)	
	Power		1 x DC Jack	
Switch	Learn/Select		1 x Pushbutton	
LED	EDID Set		4 (Green)	
Video			1920 x 1200; 1080p	
Power Consumption			DC5V, 0.15W	
Environment	Operating Temp.		0°C - 50°C	
	Storage Temp.		-20°C - 60°C	
	Humidity		0 - 80% RH, Non-condensing	
Physical Properties	Housing		Metal	
	Weight	0.15 kg	0.15 kg	0.15 kg
	Dimension (L x W x H)	7.90 x 7.76 x 2.45 cm	7.90 x 7.86 x 2.45 cm	7.90 x 7.16 x 2.45 cm

Product information is subject to change without prior notice.

**ATEN International Co., Ltd.**

3F., No.125, Sec. 2, Datong Rd., Sijhih District., New Taipei City 221, Taiwan

Phone: 886-2-8692-6789 Fax: 886-2-8692-6767

www.aten.com E-mail: marketing@aten.com

Publish Date: 04/2018 V4.0



© Copyright 2018 ATEN® International Co., Ltd.  
 ATEN and the ATEN logo are trademarks of ATEN International Co., Ltd.  
 All rights reserved. All other trademarks are the property of their respective owners.