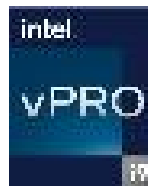


# ThinkCentre M90q Gen 3

The latest premium ThinkCentre M90q Gen 3 Tiny Desktop delivers big productivity for the modern workplace, including healthcare, finance, and retail environments. Featuring up to Intel vPro® Enterprise with 12<sup>th</sup> Generation Intel® Core™ i9 processors and built on the latest Windows 11 platform, this powerful desktop can fit—or hide—almost anywhere, while enabling enterprise-level performance, speed, and manageability. Plus, Modern Standby allows the system to continue processing background tasks even as battery life is being preserved.

Flexible mounting options, including under desks and on walls, plus the ability to support up to four independent displays and connect with a variety of additional devices, allow users to create an optimal and efficient workspace that meets their distinctive needs. Data stays secure with the end-to-end protection of ThinkShield solutions, including self-healing BIOS, as well as the built-for-business Intel vPro® platform. And when bundled with TIO\*, ThinkCentre M90q Gen 3 offers even greater value and more cost-effective upgrade options.

\*Supports TIO 22/24 Gen 3, TIO 22/24 Gen 4, TIO 27, and TIO Flex.



Smarter  
technology  
for all

Lenovo

# ThinkCentre M90q Gen 3



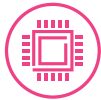
## M90q Gen 2

## M90q Gen 3

## Gen-to-Gen

Platform, Processor & Chipset	Intel vPro® / Up to 11 <sup>th</sup> Gen Intel® Core™ i9-11900 (65W) / Intel® Q570	Intel vPro® / Up to 12 <sup>th</sup> Gen Intel® Core™ i9-12900 (65W) / Intel® Q670	10%-15% enhanced performance
Front IO	1x USB 3.1 Gen 2 1x USB-C 3.1 Gen 2	2x USB 3.2 Gen 2 1x USB-C 3.2 Gen 2	Additional ports and more advanced connectivity that seamlessly transfer data, video/audio, power and even ether signal
Rear IO	2x USB3.1 Gen 2 2x USB3.1 Gen 1 1x DP 1.2 + 1x HDMI 2.0 Flex IO port #1 (VGA/DP/HDMI/Type-C/Serial) Flex IO port #2 (Serial) Flex IO port #1+ #2 (2x DP1.2 or 2x USB 3.2 or 4x USB 3.1)	2x USB 3.2 Gen 1 2x USB 3.2 Gen 2 1x DP 1.4 + 1x HDMI 2.1 TMDs Flex IO port #1 (VGA/DP/HDMI/Type-C/Serial) Flex IO port #2 (VGA/DP/HDMI/Serial/LAN) Flex IO port #1 + #2 (2x USB 3.2 or 4x USB 3.2)	
Memory	2x DDR4 SODIMM (3200 MHz)	2x DDR5 SODIMM (4800 MHz)	Improved memory with faster frequencies
Expandability	1x PCIe x8 Gen 3	1x PCIe x8 Gen 4	Extended PC functionality to connect extra devices, even a discrete graphic card, with up to twice the speed

# ThinkCentre M90q Gen 3



## BIG PERFORMANCE

Boasting full-size processing power with up to Intel vPro® Enterprise with 12<sup>th</sup> Generation Intel® Core™ i9 processors and up to two DDR5 SODIMM (4800MHz) memory support, the premium ThinkCentre M90q Gen 3 Tiny is the ultimate desktop form factor for productivity and flexibility. This Tiny delivers premium efficiency too, with features like Smart Power On, which allows users to turn on the desktop using a simple keyboard shortcut even when the power button is not accessible, and Modern Standby, which enables the device to stay up-to-date even during sleep mode. Users can connect ThinkCentre M90q Gen 3 to as many as four displays, while enhanced I/O ports allow for as-needed peripheral expansion.



## COMPREHENSIVE SECURITY

ThinkCentre devices allow users to innovate fearlessly with the reinforced security of ThinkShield, the most comprehensive, end-to-end security solution on the market that combines industry-leading hardware, software, services, and processes to protect your ideas and your business. ThinkCentre M90q Gen 3 has built-in features, such as self-healing BIOS, TPM 2.0 chip, and Smart USB Protection, in addition other customizable security features. Because ThinkCentre is built on the Intel vPro® Enterprise platform with Intel® Hardware Shield, assets and data are further protected by hardware-based, below-the-OS security features for advanced threat detection.



## COMPLETE MANAGEABILITY

ThinkCentre M90q Gen 3 is easy to deploy, upgrade, and manage thanks to features like built-in driver support for older OS versions, a PCIe add-on slot, and an X4 Ethernet add-on card. With the Intel vPro® platform, you have the assurance of remote modern manageability inside or outside the firewall, even when the PC is out of band. Toolless access to the SSD and memory module make expansion and maintenance fast and efficient. Designed to be customized, this efficient powerhouse easily connects with industry-specific equipment and legacy peripherals.



## INTENTIONAL SUSTAINABILITY

The ThinkCentre M90q Gen 3, and all of Lenovo's powerful, secure, and versatile desktop computing solutions powered by the built-for-business Intel vPro® platform, help create a more sustainable future. In fact, 100% of ThinkCentre models released after 2019 contain closed-loop post-consumer recycled plastic, and 100% of the Intel® Core™ vPro® processors used in Lenovo ThinkCentre products are made with conflict-free minerals. And by 2025, 90% of plastic packaging by weight for Lenovo PC products will be made from recycled materials.



## trusted quality

Lenovo's dedication to constantly improving product quality means rigorous testing for durability and reliability, which results in our products achieving one million hours mean time between failure. In addition to our extensive in-house testing for real-world challenges, ThinkCentre M90q Gen 3 is tested against MIL-STD 12 methods and 20 procedures.

## purposeful design

ThinkCentre M90q Gen 3 enhances the computing experience with practical features like Smart Power On, which allows users to turn on the desktop using a simple keyboard shortcut. This is especially useful when this premium Tiny desktop— and its power button—are bundled inside TIO.

## relentless innovation

Lenovo is inspired by our customers and what they want from our devices. It shows in the variety of mounting options we offer for ThinkCentre M90q Gen 3 and the added value this device presents when bundled with TIO. This combination allows businesses to upgrade monitors and PCs separately to save budget and offers users an even more clutter-free, space-saving design.

# ThinkCentre M90q Gen 3

## Services

Lenovo offers a comprehensive portfolio of services that support the full lifecycle of your Lenovo IT assets. From initial strategic planning to customized configuration, deployment, support, protection, security, and asset recovery—Lenovo has solutions to help you embrace new workplace technologies.



### PREMIER SUPPORT

As IT budgets contract, you need to reduce complexity, decrease operational costs, and find ways to increase efficiency from your in-house IT support teams. Lenovo™ Premier Support manages routine support tasks, freeing IT focus on strategic efforts that move the organization forward. Boost end-user productivity and limit downtime with direct access to elite Lenovo engineers who provide unscripted, advanced hardware and software support.



### CO<sub>2</sub> OFFSET SERVICES

As the first in the industry, Lenovo offers this certification service to customers who wish to purchase their PC products CO<sub>2</sub>-compensated over the device's lifecycle. Included in the hardware transaction, CO<sub>2</sub> compensation is based on realistic emission by product, covering production, shipment, and typical usage cycle (5 years). This service proactively supports reduction of CO<sub>2</sub> emitted in the atmosphere and compensates for environmental impact of business operations.



### BULK PACKAGING SERVICE

Bulk Packaging is an environmental packaging solution designed for multiple product types. Each package contains multiples of one like-type product to minimize the amount of material used without jeopardizing the integrity of packaging necessary to protect product in shipping process.

## Accessories

### Vertical Stand

This innovative, elegant stand is designed with a small dip angle in front for ease of use. The Vertical Stand also minimizes vibration and noise while maximizing thermal performance.



PN: SM10Z42055

### ThinkCentre Tiny Dust Shield

With an all-new design, this nylon 100 mesh dust shield helps extend the life of your ThinkCentre Tiny by protecting it from dust, dirt, and other foreign objects that can get inside. Improve the performance and overall life of your Tiny with this easy to remove, wash, and replace dust shield that has Anti-Dust Performance Verification.



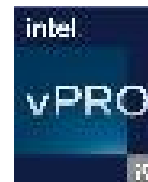
PN: SM10Y67391

### ThinkCentre Tiny Vesa Mount II

The ThinkCentre Tiny VESA Mount II is uniquely designed to house the Tiny PC. This versatile mount device can be used separately or combined with other options for a secure mounting functionality.



PN: 4XFON03161



# ThinkCentre M90q Gen 3

## performance

### PROCESSOR

Up to Intel vPro® Enterprise¹  
with 12<sup>th</sup> Generation Intel® Core™ i9 processors

### OPERATING SYSTEM

Windows 11 (Home & Pro)  
Windows 11 Downgrade (Pro)  
Windows 10 (IoT)

### MEMORY

Up to 2 DDR5 SODIMM 4800MHz

### PSU

230W 89%, 135W 89%, 90W 89%, 65W 89%

## security

Intel vPro® Enterprise  
dTPM 2.0 chip  
EC Self-healing (level 2)  
BIOS-based Smart USB Protection  
Kensington™ Cable Lock

## connectivity

### FRONT PORTS

2x USB 3.2 Gen 2  
1x USB-C 3.2 Gen 2  
1x Audio Combo

### REAR PORTS

2x USB 3.2 Gen 2  
2x USB 3.2 Gen 1  
1x HDMI 2.1 TMDS  
1x DP 1.4  
Flex IO port #1 (VGA/DP/HDMI/Type-C/Serial)  
Flex IO port #2 (VGA/DP/HDMI/Serial/LAN)  
Flex IO port #1 + #2 (2x USB 3.2 or 4x USB 3.2)  
1x LAN (1G)

### EXPANSION SLOT

1x PCIe slot x8 (Gen 4)

### M.2 SLOT

2x M.2 SSD (PCIe Gen 4)  
1x M.2 Wi-Fi

### INTERNAL BAY

1x 2.5" HDD

### EXTERNAL BAY

Optional ODD box

### WI-FI

Intel® Wi-Fi 6E² (WLAN 802.11 AX)  
Intel® Wi-Fi 6 (WLAN 802.11 AX)

## design

### EOU

Yes (Open chassis/HDD)

### DIMENSIONS

36.5 x 179 x 182.9 mm / 1.4 x 7 x 7.2 in

### WEIGHT

1.3 kg / 2.8 lbs

### MIL-STD-810H

Yes

## manageability

Supports up to 4 monitors  
Smart Power On

## green certifications

Energy Star® 8.0  
EPEAT™ Gold³  
RoHS  
ERP LOT3  
TÜV Ultra Low Noise  
TCO 9.0³

¹Optional

²16GHz Wi-Fi 6E operation is dependent on the support of the operating system, routers/APs/Gateways that support Wi-Fi 6E, and the regional regulatory certifications and spectrum allocation.

³Varies by configuration

