

LS610WH Series DLP Projector

Quick Start Guide
快速安装说明
快速入門指南
빠른 시작 가이드
クイックスタートガイド
Ръководство за бърз старт
Vodič za brzo pokretanje
Úvodní příručka
Aan de slag
Pika-aloitusopas
Guide de démarrage rapide
Schnellstarthandbuch
Οδηγός γρήγορης εκκίνησης
Első lépések
Guida introduttiva

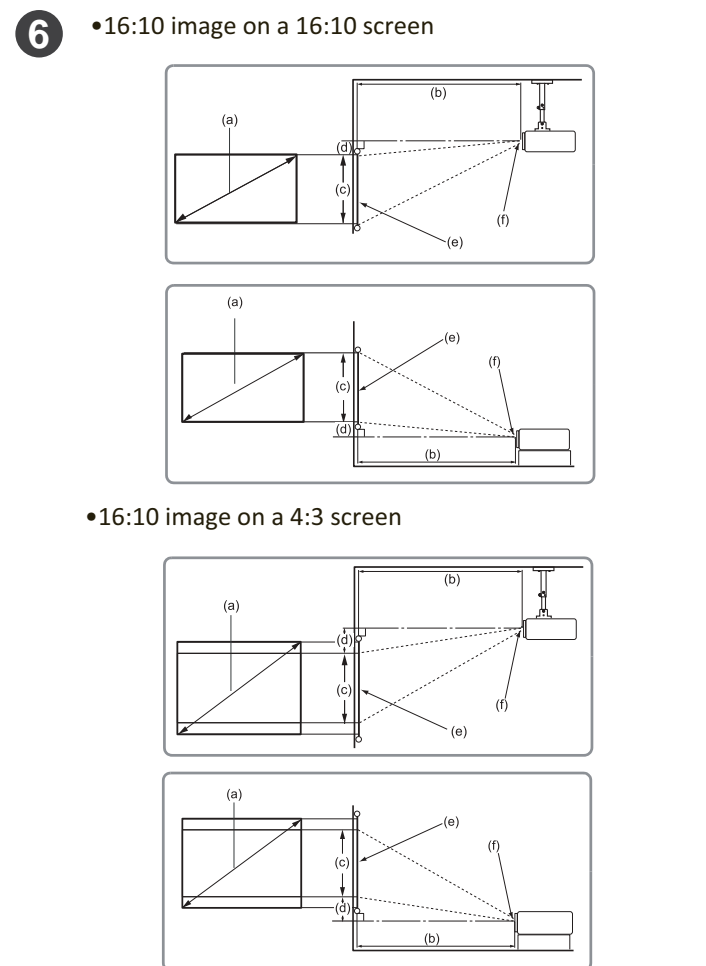
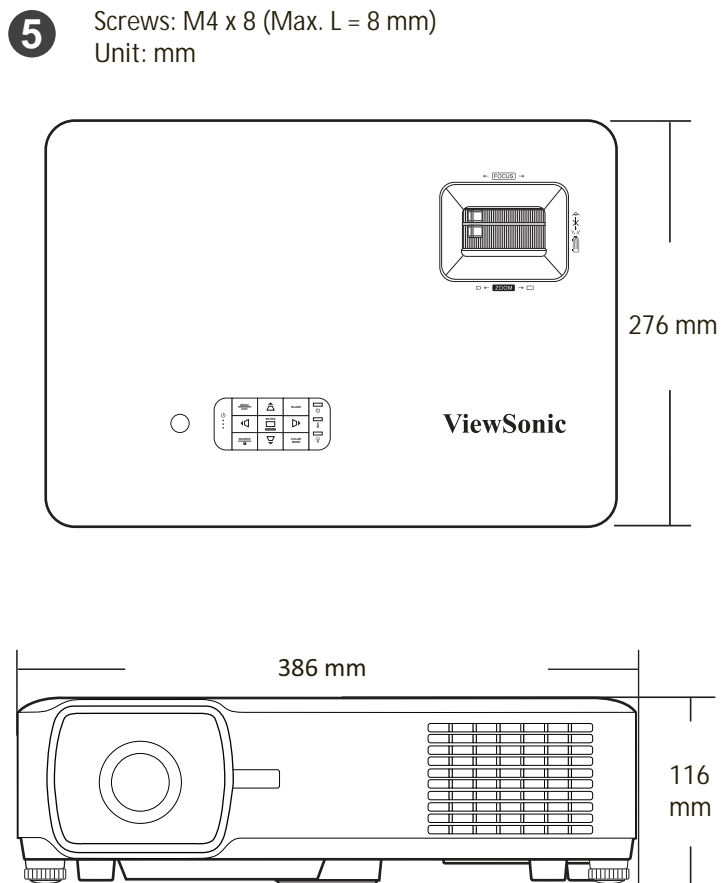
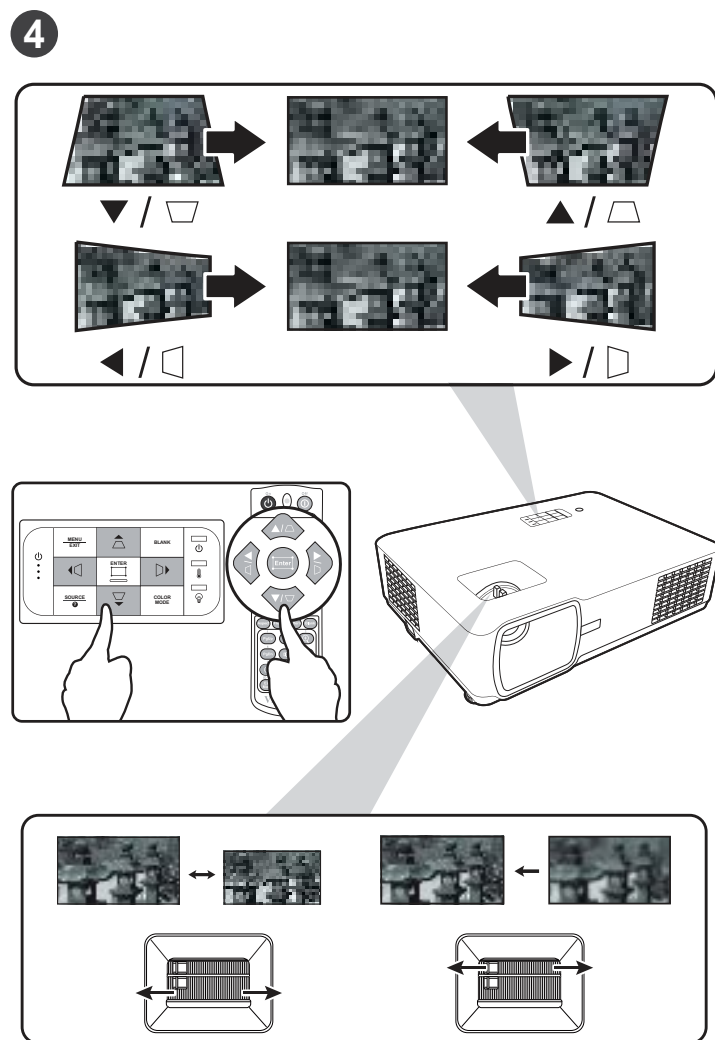
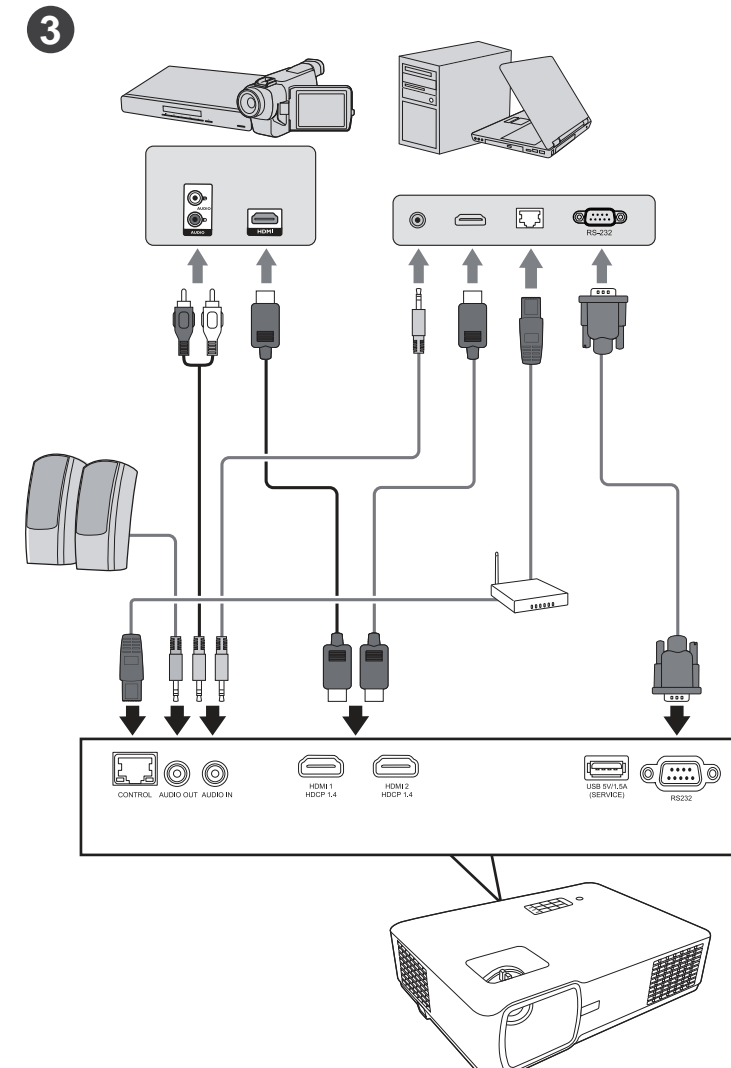
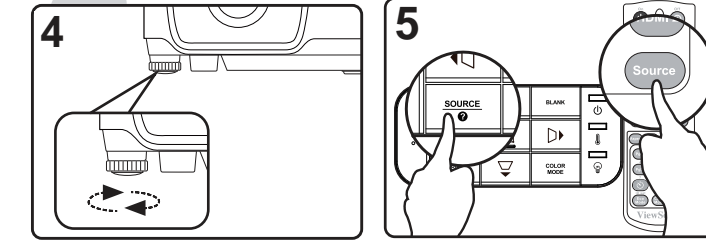
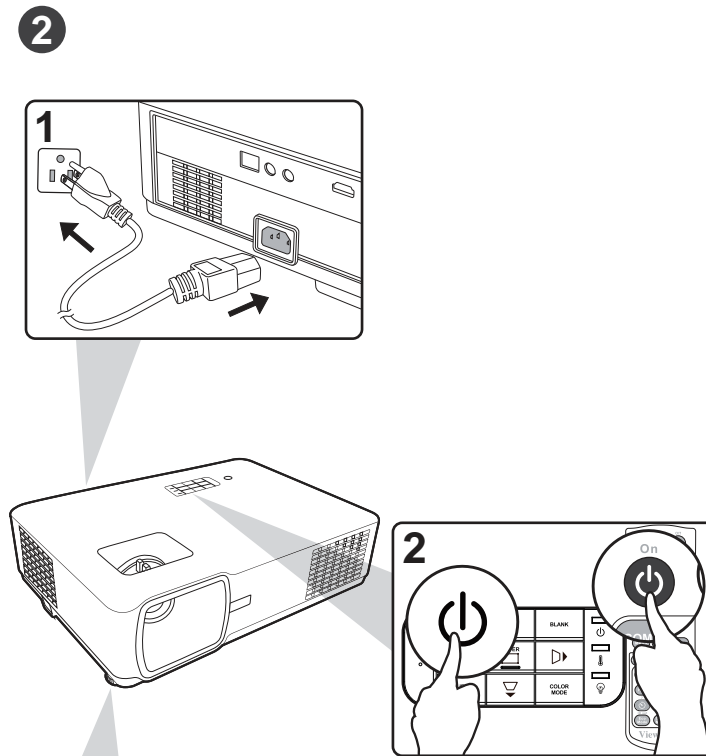
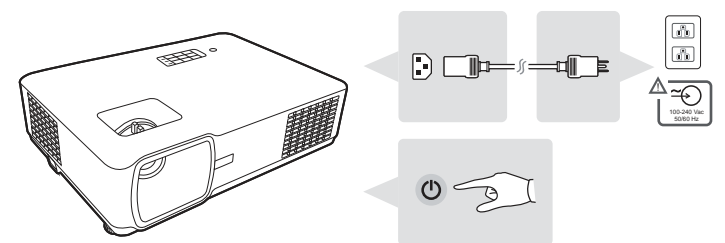
Przewodnik Szybki start
Guia de Início Rápido
Ghid de pornire rapidă
краткое руководство по началу работы
Vodič za brzi početak
Príručka so stručným návodom
Vodnik za hitri začetek
Guía de inicio rápido
Snabbstartsguide
Hızlı Başlangıç Kılavuzu
короткий посібник користувача
Panduan Mulai Cepat
دليل البدء السريع



ViewSonic Projector



Download Link
<http://vsweb.us/q/dn.php>



(e) = Screen
(f) = Center of Lens

(a) Screen Size		16:10 Image on a 16:10 Screen							
		(b) Projection distance				(c) Image height		(d) Vertical offset	
inch	mm	min.		max.		inch	mm	max.	
30	762	34.75	883	41.71	1059	15.90	404	-1.67	-42
40	1016	46.34	1177	55.61	1412	21.20	538	-2.23	-57
50	1270	57.92	1471	69.51	1766	26.50	673	-2.78	-71
60	1524	69.51	1766	83.41	2119	31.80	808	-3.34	-85
70	1778	81.09	2060	97.31	2472	37.10	942	-3.90	-99
80	2032	92.68	2354	111.21	2825	42.40	1077	-4.45	-113
90	2286	104.26	2648	125.12	3178	47.70	1212	-5.01	-127
100	2540	115.85	2943	139.02	3531	53.00	1346	-5.56	-141
120	3048	139.02	3531	166.82	4237	63.60	1615	-6.68	-170
150	3810	173.77	4414	208.53	5297	79.50	2019	-8.35	-212
200	5080	231.70	5885	278.03	7062	106.00	2692	-11.13	-283
250	6350	289.62	7356	347.54	8828	132.50	3365	-13.91	-353
300	7620	347.54	8828	417.05	10593	159.00	4039	-16.69	-424

(a) Screen Size		16:10 Image on a 4:3 Screen							
		(b) Projection distance				(c) Image height		(d) Vertical offset	
inch	mm	min.		max.		inch	mm	max.	
30	762	32.79	833	39.34	999	15.00	381	-1.58	-40
40	1016	43.72	1110	52.46	1332	20.00	508	-2.10	-53
50	1270	54.65	1388	65.57	1666	25.00	635	-2.63	-67
60	1524	65.57	1666	78.69	1999	30.00	762	-3.15	-80
70	1778	76.50	1943	91.80	2332	35.00	889	-3.68	-93
80	2032	87.43	2221	104.92	2665	40.00	1016	-4.20	-107
90	2286	98.36	2498	118.03	2998	45.00	1143	-4.73	-120
100	2540	109.29	2776	131.15	3331	50.00	1270	-5.25	-133
120	3048	131.15	3331	157.38	3997	60.00	1524	-6.30	-160
150	3810	163.94	4164	196.72	4997	75.00	1905	-7.88	-200
200	5080	218.58	5552	262.30	6662	100.00	2540	-10.50	-267
250	6350	273.23	6940	327.87	8328	125.00	3175	-13.13	-333
300	7620	327.87	8328	393.45	9994	150.00	3810	-15.75	-400

It is recommended that if you intend to permanently install the projector, please physically test the projection size and distance using the actual projector in situ before you permanently install it.

