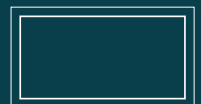




NEC Display Solutions

Product Overview



Product Overview

| Contents | Page |
|----------------------------------|------|
| Desktop Displays | 4 |
| Colour Critical Displays | 8 |
| Medical Displays | 9 |
| Large Format Displays | 10 |
| Multitouch Large Format Displays | 17 |
| Large Format Displays Options | 18 |
| LED Modules | 20 |
| Software | 24 |
| Projectors | 26 |
| Projector Options | 32 |
| Digital Cinema Projectors | 33 |
| Professional Services | 34 |

NEC brings together and integrates technology and expertise to create the ICT-enabled society of tomorrow.



Performance You Can Trust

NEC stands for product quality and design perfection with a reputation for superior performance and reliability, backed by an enviable pan-European support infrastructure. Focused on its customers' needs, NEC pioneers new technological advances which deliver uncompromising quality, durability and performance with a strong commitment to ecological objectives. Engineered to an exceptionally high standard, NEC brings innovation to its products to address genuine business needs; our products are ready for the most demanding mission critical applications - out of the box.

NEC Display Solutions brings together technology and expertise; every day, our innovative solutions for society contribute to greater safety, security, efficiency and equality, and enable people to live brighter lives. It is through partnership and collaboration that NEC Display Solutions is able to address specific needs across a broad range of sectors, orchestrating each project to ensure all its parts are fine-tuned to meet the customers' needs. With the widest portfolio of display and projection solutions on the market, NEC is a Total Display Solutions Provider, trusted by AV professionals the world over.



Desktop Displays



With a comprehensive range of Display Solutions on the market, NEC has a desktop display for almost any requirement. From mission critical, such as Finance, Medical or Publishing to ecological or commercial applications and all are backed by our three year manufacturer warranty.

Commercial Entry Level

AS Series Office productivity for cost conscious professionals

Commercial Enterprise

E Series Future proof displays for the performance-oriented workplace

EA Series For the advanced ergonomic and high performance-oriented workplace

Professional

P Series The professional series for demanding office and industrial applications

PA Series The Reference series for demanding precision applications

Colour Reference

SV Series The Colour Reference series for the ultimate colour accurate performance

Medical

MD Series DICOM certified displays for primary diagnostics and clinical review for medical applications

3
YEARS
WARRANTY

UP TO
5
YEARS
OPTIONAL
WARRANTY


ECO
INNOVATION

AS | Commercial Entry Level

Entry level displays for cost-conscious users offering outstanding value for money and an attractive lifestyle design

22" to 24"

AS Series

1080P
FULLHD IMAGE



E | EA | Commercial Enterprise

Performance-oriented displays ideal for corporate and SMB users. Advanced ergonomics and leading image quality and improved connectivity; these products have all the credentials today that will be demanded tomorrow.

17" to 24"

E Series

19" to 30"

EA Series



P | PA | Professional Reference

Ideal for demanding precision applications used by creative professionals, photographers and engineers. Superb performance and 10-bit P-IPS image quality with a wide range of innovative features and upgraded connectivity, all packed into a new ergonomically designed housing.

21" to 24"

P Series

24" to 32"

PA Series



AS | Commercial Entry Level

EA | Commercial Enterprise

| AccuSync® Model / MultiSync® Model | AS222WM | AS242W | EA193Mi | EA223WM | EA224Wmi | EA234Wmi | EA244Wmi | EA244UHD |
|--|-----------------|-----------------|--------------------------------|--------------------------------|--------------------------------|--------------------------------|--------------------------------|--|
| Order Code | 60003496 (BK) | 60003810 (BK) | 60003586 (BK) 60003585 (WH) | 60003294 (BK) 60003293 (WH) | 60003336 (BK) 60003337 (WH) | 60003588 (BK) 60003587 (WH) | 60003414 (BK) 60003409 (WH) | 60003683 (BK) 60003684 (WH) |
| Panel Technology | TN / W-LED | W-LED TN TFT | IPS / W-LED | TN / W-LED | IPS / W-LED | IPS / W-LED | IPS / W-LED | IPS / W-LED |
| Screen Size [inch / cm] | 21.5 / 54.62 | 24 / 60.97 | 19.0 / 48.2 | 22.0 / 55.9 | 21.5 / 54.62 | 23.0 / 58.42 | 24.1 / 61.13 | 23.8 / 60.5 |
| Aspect Ratio | 16:9 | 16:9 | 5:4 | 16:10 | 16:9 | 16:9 | 16:10 | 16:9 |
| Brightness (typ.) [cd/m²] | 250 | 250 | 250 | 250 | 250 | 250 | 350 | 350 |
| Contrast (typ.) | 1000:1 | 1000:1 | 1000:1 | 1000:1 | 1000:1 | 1000:1 | 1000:1 | 1000:1 |
| Viewing Angle Hor / Vert [°] | 170 / 160 | 170 / 160 | 178 / 178 | 170 / 160 | 178 / 178 | 178 / 178 | 178 / 178 | 178 / 178 |
| Response Time (typ. G to G) [ms] | 5 | 5 | 6 | 5 | 6 | 6 | 6 | 5 |
| Colours [Mio.] | 16.77 | 16.77 | 16.77 | 16.77 | 16.77 | 16.77 | 16.77 | 1074 |
| Resolution at 60 Hz | 1920 x 1080 | 1920 x 1080 | 1280 x 1024 | 1680 x 1050 | 1920 x 1080 | 1920 x 1080 | 1920 x 1200 | 3840 x 2160 |
| Connectivity | DVI-D, VGA | DVI-D, VGA | DP, DVI-D, VGA | DP, DVI-D, USB, VGA | DP, DVI-D, USB, HDMI, VGA | DVI-D, HDMI, USB, DP, VGA | DVI-D, HDMI, USB, DP, VGA | 2 DVI-D (Single Link), 2 DP, 2 HDMI, USB 3.0 |
| Power Use Max / ECO [W] | 27 / 13 | 24 / 13 | 18 / 10 | 25 / 12 | 26 / 15 | 27 / 16 | 29 / 16 | 79 / 41 |
| Power Saving Mode [W] | 0.35 | 0.35 | 0.35 | 0.4 | 0.43 | 0.41 | 0.47 | 0.33 |
| Internal Power Supply | • | • | • | • | • | • | • | • |
| Height Adjustable Stand [mm] | - | - | 110 | 130 | 130 | 130 | 130 | 130 |
| Other Ergonomics | tilt | tilt | tilt, swivel, rotate | tilt, swivel, rotate | tilt, swivel, rotate | tilt, swivel, rotate | tilt, swivel, rotate | tilt, swivel, rotate |
| Bezel Width T - B / L - R [mm] | 15.8 / 14.7 | 19.0 / 19.0 | 16.5 / 14.9 | 15.8 / 13.9 | 15.8 / 14.7 | 16.4 / 16.0 | 16.8 / 17.9 | 18.1 / 14.8 |
| Dimensions with stand (W x H x D) [mm] | 507 x 364 x 205 | 571 x 400 x 211 | 408 x 386 x 213 | 503.5 x 384 x 218 | 507.4 x 370 x 218 | 543 x 380 x 218 | 556 x 408 x 230 | 558 x 386 x 218 |
| Weight with stand [kg] | 4.1 | 4.0 | 6.0 | 5.6 | 6.0 | 6.4 | 7.6 | 7 |
| TCO | 6.0 | 6.0 | 6.0 | 5.2 | 6.0 | 6.0 | 6.0 | 6.0 |
| NaViSet | • | • | • | • | • | • | • | • |

EA | Commercial Enterprise

| MultiSync® Model | EA273Wmi | EA274Wmi | EA275Wmi* | EA275UHD | EA294Wmi | EA304Wmi | EA305Wmi* |
|--|--------------------------------|--------------------------------|--------------------------------|--------------------------------|-----------------------------------|--------------------------------|--------------------------------|
| Order Code | 60003608 (BK) 60003607 (WH) | 60003493 (BK) 60003492 (WH) | 60003338 (BK) 60003339 (WH) | 60003865 (BK) 60003867 (WH) | 60003417 (BK) 60003415 (WH) | 60003494 (BK) 60003495 (WH) | 60003819 (BK) 60003820 (WH) |
| Panel Technology | IPS / W-LED | IPS / W-LED | IPS / W-LED | IPS | IPS / W-LED | IPS / W-LED | IPS / W-LED |
| Screen Size [inch / cm] | 27.0 / 68.6 | 27.0 / 68.57 | 27.0 / 68.57 | 27.0 / 68.57 | 29.0 / 73.2 | 29.8 / 75.7 | 30 / 76.2 |
| Aspect Ratio | 16:9 | 16:9 | 16:9 | 16:9 | 21:9 | 16:10 | 16:10 |
| Brightness (typ.) [cd/m²] | 250 | 350 | 350 | 350 | 300 | 350 | 350 |
| Contrast (typ.) | 1000:1 | 1000:1 | 1000:1 | 1000:1 | 1000:1 | 1000:1 | 1000:1 |
| Viewing Angle Hor / Vert [°] | 178 / 178 | 178 / 178 | 178 / 178 | 178 / 178 | 178 / 178 | 178 / 178 | 178 / 178 |
| Response Time (typ. G to G) [ms] | 6 | 6 | 6 | 5 | 6 | 6 | 6 |
| Colours [Mio.] | 16.77 | 16.77 | 16.77 | 1074 | 16.77 | 1074 | 16.77 |
| Resolution at 60 Hz | 1920 x 1080 | 2560 x 1080 | 2560 x 1440 | 3840 x 2160 | 2560 x 1080 | 2560 x 1600 | 2560 x 1600 |
| Connectivity | DVI-D, HDMI, USB, DP, VGA | DVI-D, HDMI, USB, DP, VGA | DVI-I, HDMI, USB, DP | DVI-D, HDMI, USB, DP, VGA | 2 DVI-D, HDMI/MHL, USB, DP, 2 VGA | DVI-D, HDMI/MHL, USB, DP, VGA | DVI-I, HDMI/MHL, USB, DP |
| Power Use Max / ECO [W] | 31 / 16 | 57 / 35 | 57 / 35 | 49 / 28 | 50 / 28 | 83 / 48 | 107 / 48 |
| Power Saving Mode [W] | 0.48 | 0.80 | 0.47 | 0.37 | 0.8 | 0.7 | 0.47 |
| Internal Power Supply | • | • | • | • | • | • | • |
| Height Adjustable Stand [mm] | 130 | 130 | 130 | 130 | 130 | 130 | 130 |
| Other Ergonomics | tilt, swivel, rotate | tilt, swivel, rotate | tilt, swivel, rotate | tilt, swivel, rotate | tilt, swivel, rotate | tilt, swivel, rotate | tilt, swivel, rotate |
| Bezel Width T - B / L - R [mm] | 19.6 / 19.6 | 18 / 15.5 | 19.6 / 19.6 | 18.1 / 14.8 | 18.0 / 15.5 | 21.9 / 21.8 | 21.9 / 21.8 |
| Dimensions with stand (W x H x D) [mm] | 639 x 417 x 230 | 705 x 410 x 230 | 639 x 417 x 230 | 639 x 417 x 230 | 705 x 410 x 230 | 686 x 472 x 230 | 686 x 472 x 230 |
| Weight with stand [kg] | 8.7 | 9.6 | 8.7 | 9.1 | 9.6 | 11 | 10.9 |
| TCO | 6.0 | 6.0 | 6.0 | 6.0 | 6.0 | 6.0 | 6.0 |
| NaViSet | • | • | • | • | • | • | • |

* Specification subject to change until launch

E | Commercial Enterprise

| MultiSync® Model | E171M | E203Wi* | E223W | E224Wi | E231W | E233WM* | E232WMT | E243WMI |
|--|--------------------------------|--------------------------------|--------------------------------|--------------------------------|--------------------------------|--------------------------------|--------------------|--------------------------------|
| Order Code | 60003582 (BK) 60003581 (WH) | 60003804 (BK) 60003805 (WH) | 60003334 (BK) 60003335 (WH) | 60003584 (BK) 60003583 (WH) | 60002932 (BK) 60002933 (WH) | 60003806 (BK) 60003807 (WH) | 60003680 (BK) | 60003681 (BK) 60003682 (WH) |
| Panel Technology | TN / W-LED | IPS / W-LED | TN / W-LED | IPS / W-LED | TN / W-LED | TN / W-LED | IPS / W-LED | IPS / W-LED |
| Screen Size [inch / cm] | 17.0 / 43.3 | 20.0 / 50.0 | 22.0 / 55.9 | 21.5 / 54.6 | 23.0 / 58.42 | 23.0 / 58.42 | 23.0 / 58.4 | 23.8 / 60.47 |
| Aspect Ratio | 5:4 | 16:9 | 16:10 | 16:9 | 16:9 | 16:9 | 16:9 | 16:9 |
| Brightness (typ.) [cd/m²] | 250 | 250 | 250 | 250 | 250 | 250 | 250 | 250 |
| Contrast (typ.) | 1000:1 | 1000:1 | 1000:1 | 1000:1 | 1000:1 | 1000:1 | 1000:1 | 1000:1 |
| Viewing Angle Hor / Vert [°] | 170 / 160 | 178 / 178 | 170 / 160 | 178 / 178 | 170 / 160 | 170 / 160 | 170 / 170 | 178 / 178 |
| Response Time (typ. G to G) [ms] | 5 | 6 | 5 | 6 | 5 | 5 | 6 | 6 |
| Colours [Mio.] | 16.77 | 16.77 | 16.77 | 16.77 | 16.77 | 16.77 | 16.77 | 16.77 |
| Resolution at 60 Hz | 1280 x 1024 | 1600 x 900 | 1680 x 1050 | 1920 x 1080 | 1920 x 1080 | 1920 x 1080 | 1920 x 1080 | 1920 x 1080 |
| Connectivity | DVI-D, VGA | DP, DVI-D, VGA | DP, DVI-D, VGA | DP, DVI-D, VGA | DP, DVI-D, VGA | DP, DVI-D, VGA | HDMI, DVI-D, VGA | DP, DVI-D, VGA |
| Power Use Max / ECO [W] | 19 / 9 | 17 / 11 | 24 / 12 | 25 / 16 | 28 / 16 | 24 / 13 | 52 / 20 | 26 / 13 |
| Power Saving Mode [W] | 0.15 | 0.35 | 0.35 | 0.4 | 0.34 | 0.35 | 0.8 | 0.4 |
| Internal Power Supply | ● | ● | ● | ● | ● | ● | ● | ● |
| Height Adjustable Stand [mm] | 50 | 110 | 110 | 110 | 110 | 110 | 54 | 110 |
| Other Ergonomics | tilt | tilt, swivel, rotate | tilt, swivel, rotate | tilt, swivel, rotate | tilt, swivel, rotate | tilt, swivel, rotate | tilt, swivel, flat | tilt, swivel, rotate |
| Bezel Width T - B / L - R [mm] | 17.5 / 14.2 | 17.6 / 15.2 | 15.8 / 13.9 | 15.8 / 14.7 | 19.2 / 19.2 | 16.8 / 16.4 | – | 16.8 / 14.7 |
| Dimensions with stand (W x H x D) [mm] | 368 x 358 x 230 | 466 x 350 x 213 | 503 x 383 x 213 | 507 x 364 x 213 | 550 x 381 x 213 | 544 x 374 x 213 | 561 x 362 x 249 | 557 x 379 x 213 |
| Weight with stand [kg] | 4.2 | 4.9 | 4.9 | 5.9 | 6.2 | 5.7 | 7.6 | 6.3 |
| TCO | 6.0 | 6.0 | 6.0 | 6.0 | 6.0 | 6.0 | 6.0 | 6.0 |

P | PA | Professional Reference

| MultiSync® Model | P212 | P232W | P242W | PA242W -SV2 | PA272W -SV2 | PA302W -SV2 | PA322 UHD-SV2 |
|--|---|--------------------------------|--------------------------------|---|----------------------|---|----------------------|
| Order Code | 60003862 (BK) 60003989 (WH) | 60003838 (BK) 60003323 (WH) | 60003419 (BK) 60003418 (WH) | 60003948 (BK) 60003947 (WH) | 60003949 (BK) | 60003950 (BK) | 60003685 (BK) |
| Panel Technology | IPS / LED | IPS / W-LED | IPS / W-LED | AH-IPS / GB-R LED | | | IPS / W-LED |
| Screen Size [inch / cm] | 21.3 / 54 | 23.0 / 58.4 | 24.1 / 61.1 | 24.1 / 61.1 | 27.0 / 68.5 | 29.8 / 75.6 | 31.5 / 80.1 |
| Aspect Ratio | 4:3 | 16:9 | 16:10 | 16:10 | 16:9 | 16:10 | 16:9 |
| Colour Gamut AdobeRGB/sRGB Coverage [%] | 77.0 / 97.9 | 75.2 / 96.8 | 78.4 / 99.6 | 99.3 / 100 | 99.3 / 100 | 99.3 / 100 | 99.2 / 100 |
| Brightness (typ.) [cd/m²] | 440 | 250 | 350 | 340 | 340 | 340 | 350 |
| Contrast (typ.) | 1500:1 | 1000:1 | 1000:1 | 1000:1 | 1000:1 | 1000:1 | 1000:1 |
| Viewing Angle Hor / Vert [°] | 178 / 178 | 178 / 178 | 178 / 178 | 178 / 178 | 178 / 178 | 178 / 178 | 176 / 176 |
| Response Time (typ. G to G) [ms] | 8 | 8 | 8 | 8 | 7 | 7 | 10 |
| Colours [Mio.] | 1074 | 16.77 | 16.77 | 1074 | 1074 | 1074 | 1074 |
| Resolution at 60 Hz | 1600 x 1200 | 1920 x 1080 | 1920 x 1200 | 1920 x 1200 | 2560 x 1440 | 2560 x 1600 | 3840 x 2160 |
| Connectivity | DP, Mini DP, HDMI, DVI-D, USB 2.0 (3 down / 2 up) | | | DP, Mini DP, HDMI, DVI-D, USB 2.0 (3 down / 2 up) | | DP, Mini DP, HDMI, DVI-D, USB 2.0 (3 down / 2 up) | |
| Power Use Max / ECO [W] | 57 / 24 | 29 / 18 | 30 / 17 | 56 / 28 | 73 / 37 | 87 / 47 | 95 / 48 |
| Power Saving Mode [W] | 0.5 | 1 | 1 | 2 | 1.4 | 1.4 | 5 |
| Internal Power Supply | ● | ● | ● | ● | ● | ● | ● |
| Height Adjustable Stand [mm] | 150 | 150 | 150 | 150 | 150 | 150 | 150 |
| Other Ergonomics | tilt, swivel, rotate | tilt, swivel, rotate | tilt, swivel, rotate | tilt, swivel, rotate | tilt, swivel, rotate | tilt, swivel, rotate | tilt, swivel, rotate |
| Bezel Width T - B / L - R [mm] | 16.8 / 16.2 | 17.0 / 16.2 | 18.2 / 18.2 | 18.2 / 18.2 | 20.0 / 20.3 | 22.0 / 22.4 | 22.5 / 21.9 |
| Dimensions with stand (W x H x D) [mm] | 466.4 x 374 x 227.6 | 543 x 337 x 227.6 | 556 x 378 x 227 | 556 x 378 x 227 | 640 x 396 x 235 | 688 x 466 x 301 | 745 x 469 x 302 |
| Weight with stand [kg] | 8.0 | 9.2 | 10.2 | 10.6 | 12.9 | 17.0 | 20.5 |
| TCO | - | 6.0 | 6.0 | - | - | - | - |
| NaViSet Administrator 2 | ● | ● | ● | ● | ● | ● | ● |
| MultiProfiler Software | ● | ● | ● | ● | ● | ● | ● |
| SpectraView II | Optional | Optional | Optional | ● | ● | ● | ● |

* Specification subject to change until launch

SpectraView | Colour Reference

The perfect choice for creative professionals. SpectraView® LCDs with the latest AH-IPS panel technology are designed to meet the highest standards for professional applications where colour fidelity cannot be compromised. SpectraView® displays are individually screened for 0 Pixel defect.

23" to 32"

SV Series

For more detailed information please visit:

www.spectraview.nec-display-solutions.com



SpectraView®

SpectraView | Colour Reference

| | SV232 | SV Ref242 | SV Ref272 | SV Ref302 | SV Ref322 UHD |
|--|---|---|---|------------------------|---|
| Order Code | 60003161 | 60003543 | 60003545 | 60003547 | 60003686 |
| Panel Technology | IPS / W-LED | AH-IPS / G-BR LED | AH-IPS / G-BR LED | AH-IPS / G-BR LED | IPS / W-LED |
| Screen Size [inch / cm] | 23.0 / 58.4 | 24.1 / 61.1 | 27.0 / 68.5 | 29.8 / 75.6 | 31.5 / 80.1 |
| Aspect Ratio | 16:9 | 16:10 | 16:9 | 16:10 | 16:9 |
| Colour Gamut AdobeRGB/sRGB Coverage [%] | 75.2 / 96.8 | 99.3 / 100 | 99.3 / 100 | 99.3 / 100 | 99.2 / 100 |
| Brightness (typ.) [cd/m ²] | 270 | 340 | 340 | 340 | 350 |
| Contrast (typ.) | 1000:1 | 1000:1 | 1000:1 | 1000:1 | 1000:1 |
| Hardware Calibration / Look Up Table | 42-bit Colour / 14-bit | 42-bit Colour / 14-bit | 42-bit Colour / 14-bit | 42-bit Colour / 14-bit | 42-bit Colour / 14-bit |
| Response Time (typ. G to G) [ms] | 8 | 8 | 7 | 7 | 10 |
| Colours [Mio.] | 16.77 | 1074 | 1074 | 1074 | 1074 |
| Resolution at 60 Hz | 1920 x 1080 | 1920 x 1200 | 2560 x 1440 | 2560 x 1600 | 3840 x 2160 |
| Connectivity | DP, DVI-D, HDMI, VGA, USB 2.0 (3 down / 2 up) | DP, DVI-D, HDMI, VGA, USB 2.0 (3 down / 2 up) | DP, Mini DP, HDMI, DVI-D, VGA, USB 2.0 (3 down / 2 up) | | OPS FF, 2 DP, 2 DVI-D, 4 HDMI, USB 3.0 (3 down / 2 up) |
| Power Use Normal / ECO [W] | 29 / 18 | 56 / 28 | 73 / 37 | 87 / 47 | 95 / 48 |
| Power Saving Mode [W] | 1 | 2 | 1.4 | 1.4 | 5 |
| Internal Power Supply | • | • | • | • | • |
| Height Adjustable Stand [mm] | 150 | 150 | 150 | 150 | 150 |
| Other Ergonomics | tilt, swivel, rotate | tilt, swivel, rotate | tilt, swivel, rotate | tilt, swivel, rotate | tilt, swivel, rotate |
| Bezel Width T - B / L - R [mm] | 17.0 / 16.2 | 18.2 / 18.2 | 20.0 / 20.3 | 22.0 / 22.4 | 21.9 / 22.5 |
| Dimensions with stand (W x H x D) [mm] | 543 x 338 x 227 | 556 x 378 x 227 | 640 x 396 x 235 | 688 x 466 x 301 | 745 x 469 x 302 |
| Weight with stand [kg] | 9.2 | 10.6 | 12.9 | 18.0 | 20.5 |
| 5 years warranty / 0 Pixel Defect | Optional / - | •/• | •/• | •/• | •/• |

GB LED

UP TO
5
YEARS
WARRANTY

0
PIXEL
DEFECT

NaViSet
Administrator 2



As one of the leading manufacturer of innovative medical displays NEC is your partner to deal with the challenges of hospital-wide digitalisation processes. Select from our medical portfolio - desktop displays, large format displays or DICOM Simulation projectors in the knowledge that you have one point of support and the highest standards of cross-departmental integration to a common standard.

2MP - 8MP

MD Series

2MP - 3.7MP

MDview Series

46"

OR Large Format

For more detailed information please visit:
www.medical.nec-display-solutions.com



MD Series | Diagnostic

| | MD211G5 | MD212G3 | MD211G3 | MD302C6 | MD211C3 | MD210C3 | MD211C2 | MD210C2 |
|-----------------------------------|----------------------------------|----------------------------------|----------------------------------|---------------------------------|----------------------------------|----------------------------------|----------------------------------|----------------------------------|
| Panel Technology | IPS Grayscale LED Backlight | IPS TFT Colour W-LED Backlight | SA-SFT Grayscale | IPS TFT Colour W-LED Backlight | UA-SFT Colour LED Backlight | UA-SFT Colour LED Backlight | UA-SFT Colour LED Backlight | UA-SFT Colour LED Backlight |
| Screen diagonal [inch/cm] | 21.3 / 54.0 | 21.3 / 54.0 | 21.3 / 54.0 | 30 / 76.2 | 21.3 / 54.0 | 21.3 / 54.0 | 21.3 / 54.0 | 21.3 / 54.0 |
| Native resolution [Megapixel] | 5.0 | 3.0 | 3.0 | 6,7 | 3.0 | 3.0 | 2.0 | 2.0 |
| Resolution | 2048 x 2560 (P) | 1536 x 2048 (P) | 1536 x 2048 (P) | 3280 x 2048 (L) | 1536 x 2048 (P) | 1536 x 2048 (P) | 1200 x 1600 (P) | 1200 x 1600 (P) |
| Contrast ratio (typ.) | 1200:1 | 1400:1 | 900:1 | 1000:1 | 1400:1 | 1400:1 | 1400:1 | 1400:1 |
| Viewing angle (H / V @ CR > 10:1) | 176° / 176° | 176° / 176° | 176° / 176° | 170° / 170° | 176° / 176° | 176° / 176° | 176° / 176° | 176° / 176° |
| Luminance (Max) | 1200 cd/m ² | 1700 cd/m ² | 1450 cd/m ² | 800 cd/m ² | 800 cd/m ² | 800 cd/m ² | 900 cd/m ² | 760 cd/m ² |
| Colour/Grayscale reproduction | 10-bit | 10-bit | 10-bit | 10-bit | 10-bit | 10-bit | 10-bit | 10-bit |
| Programmable gamma correction | 13.5-bit | 15.5-bit | 15.5-bit | 16-bit | 14-bit | 14-bit | 14-bit | 14-bit |
| Factory pre-set | 500 cd/m ² DICOM GSDF | 400 cd/m ² DICOM GSDF | 400 cd/m ² DICOM GSDF | 400cd/m ² DICOM GSDF | 400 cd/m ² DICOM GSDF | 400 cd/m ² DICOM GSDF | 400 cd/m ² DICOM GSDF | 400 cd/m ² DICOM GSDF |
| Connectivity | DVI-D, DP | DVI-D, DP | DVI-D, DP | 2 DVI-D, 2 DP | DVI-D, DP | DVI-D, DP | DVI-D, DP | DVI-D, DP |
| Power consumption (max.) [W] | 80 | 50 | 105 | 173.5 | 85 | 85 | 80 | 80 |
| Dimensions (W x H x D) [mm] | 390 x 488 x 228 (Portrait) | 380 x 474 x 228 (Portrait) | 361x 483 x 227 (Portrait) | 696 x 487 x 302 (Landscape) | 394 x 473 x 236 (Portrait) | 394 x 473 x 236 (Portrait) | 394 x 473 x 236 (Portrait) | 394 x 473 x 236 (Portrait) |
| Warranty | 3 yrs., opt.: 5 yrs. | 3 yrs., opt.: 5 yrs. | 3 yrs., opt.: 5 yrs. | 3 yrs., opt.: 5 yrs. | 3 yrs., opt.: 5 yrs. | 3 yrs., opt.: 5 yrs. | 3 yrs., opt.: 5 yrs. | 3 yrs., opt.: 5 yrs. |

MD Series | Diagnostic

| | MD C212C2 | MDC212C2 270* | MD322C8 | MD302C4 | MD242C2 | MD view232 | MD view243 | MD view272 | MD4620R |
|-----------------------------------|----------------------------------|----------------------------------|--|----------------------------------|----------------------------------|----------------------------------|----------------------------------|----------------------------------|----------------------------------|
| Panel Technology | IPS TFT LED Backlight | IPS TFT LED Backlight | IPS Type TFT Colour with W-LED Backlight | AH-IPS Colour LED Backlight | IPS Colour LED Backlight | IPS Colour LED Backlight | IPS Colour LED Backlight | AH-IPS Colour LED Backlight | S-PVA Colour |
| Screen diagonal [inch/cm] | 21.3 / 54 | 21.3 / 54 | 31.5 / 80.1 | 29.8 / 75.6 | 24.1 / 61.1 | 23.0 / 50.9 | 24.1 / 61.1 | 27.0 / 68.5 | 46 / 116.8 |
| Native resolution [Megapixel] | 2.0 | 2.0 | 8.3 | 4.0 | 2.3 | 2.0 | 2.3 | 3.7 | 2.0 |
| Resolution | 1600 x 1200 (L) | 1600 x 1200 (L) | 3840 x 2160 (L) | 2560 x 1600 (L) | 1920x 1200 (L) | 1920 x 1080 (L) | 1920 x 1200 (L) | 2560 x 1440 (L) | 1920 x 1080 (L) |
| Contrast ratio (typ.) | 1500:1 | 1500:1 | 1000:1 | 1000:1 | 1000:1 | 1000:1 | 1000:1 | 1000:1 | 4000:1 |
| Viewing angle (H / V @ CR > 10:1) | 178° / 178° | 178° / 178° | 176° / 176° | 178° / 178° | 178° / 178° | 178° / 178° | 178° / 178° | 178° / 178° | 178° / 178° |
| Luminance (Max) | 440 cd/m ² | 440 cd/m ² | 350 cd/m ² | 340 cd/m ² | 350cd/m ² | 250 cd/m ² | 350 cd/m ² | 340 cd/m ² | 700 cd/m ² |
| Colour/Grayscale reproduction | 10-bit | 10-bit | 10-bit | 10-bit | 10-bit | 8-bit | 10-bit | 10-bit | 8-bit |
| Programmable gamma correction | 14-bit | 14-bit | 14-bit | 14-bit | 14-bit | 14-bit | 14-bit | 14-bit | 10-bit |
| Factory pre-set | 180 cd/m ² DICOM GSDF | 270 cd/m ² DICOM GSDF | 200 cd/m ² DICOM GSDF | 180 cd/m ² DICOM GSDF | 180 cd/m ² DICOM GSDF | 170 cd/m ² DICOM GSDF | 170 cd/m ² DICOM GSDF | 170 cd/m ² DICOM GSDF | 550 cd/m ² DICOM GSDF |
| Connectivity | DVI-D, DP, VGA | DVI-D, DP, VGA | 2 DVI-D, 2 DP, 4 HDMI | DVI-D, DP, Mini-DP, HDMI | DVI-D, DP, HDMI, VGA | DVI-D, DP, HDMI, VGA | DVI-D, DP, HDMI, VGA | DVI-D, DP, Mini-DP, HDMI | DP, DVI-D, HDMI, OPS, D-Sub |
| Power consumption (max.) [W] | 54 | 54 | 95 | 87 | 30 | 29 | 30 | 73 | 150 |
| Dimensions (W x H x D) [mm] | 466 x 375 x 228 (Landscape) | 466 x 375 x 228 (Landscape) | 744.8 x 468 x 301.6 (Landscape) | 688 x 466 x 302 (Landscape) | 557 x 378 x 228 (Landscape) | 543 x 337 x 227 (Landscape) | 557 x 378 x 228 (Landscape) | 640 x 396 x 236 (Landscape) | 1153 x 820 x 180 (Landscape) |
| Warranty | 3 yrs., opt.: 5 yrs. | 3 yrs., opt.: 5 yrs. | 3 yrs., opt.: 5 yrs. | 3 yrs., opt.: 5 yrs. | 3 yrs., opt.: 5 yrs. | 3 yrs., opt.: 5 yrs. | 3 yrs., opt.: 5 yrs. | 3 yrs., opt.: 5 yrs. | 3 years standard |

* Specification subject to change until launch

Large Format Displays



As a world leading name in digital signage, NEC displays are installed in some of the most challenging and highly visited locations and venues across the world. From 24/7 LED backlit displays for performance critical applications to high quality value ranges and reference options, NEC leads the market for signage solutions you can trust.

Entry-Level Signage

E Series Cost efficient digital signage as well as meeting room equipment

Value Signage

V Series Value for money signage all-rounder delivering convenience and flexibility

Professional Signage

P Series High end solution offering secure and reliable operations paired with a perfect image representation in all environments

Speciality

XUN Series Video wall solution for huge surfaces offering a very modular and flexible design

XS Series Super slim display for discreet integration in space critical settings

XHB Series

Hight bright display for perfect image presenting in very light surroundings

XUHD Series

Pixel free viewing combined with precise colour reproduction when image quality decides

Protective Glass

Maximum protection against knocks and blows combined with reduced reflection and high light transmission for an unrestricted image quality

Available for V / P / XS / XUHD Series

Multi-Touch

Interactive plug & play touch solutions offering true multi-touch for a wide range of applications

Availabe for E / V / P / XUHD Series



E Series | Entry Level Signage

The E Series commercial-grade displays are designed to bring NEC's heritage of performance and quality to the most cost-conscious customers. With screen sizes from 32 to 90 inch, the smaller sized E Series models bring a comprehensive line-up of large format displays for entry-level applications. The larger sized models are completely new to the E Series family, specially designed for the needs of corporate customers who rely on quality professional solutions yet offer a compellingly low total cost of ownership.

32" to 90"

E Series



127
CERTIFIED
OPERATION

1080P
FULLHD IMAGE

V Series | Value Signage

If you are looking to transform your restaurant, shop or business with the added presence and revenue that digital signage offers, the V Series by NEC provides professional performance you can trust at a surprisingly affordable price. Benefit from the extra attention and sales these outstanding Full HD displays can bring while operating over longer lifecycles. The V Series also offers a DRD-range of signage-ready models for convenient and instant usage.

32" to 80"

V Series



247
CERTIFIED
OPERATION

1080P
FULLHD IMAGE



P Series | Professional Signage

The P Series provides a first class solution for digital signage and information distribution applications. New connectivity and sensors allow additional creativity in the content displayed and how it is controlled. The unique built-in NFC sensor in combination with NEC's new Android app reduces installation and maintenance times, especially useful on larger installations. The Human Sensor is aware of proximity based viewer presence and can change brightness, volume, inputs or power the display up or down resulting in added engagement and considerable energy savings over time.

40" to 80"

P Series



247
CERTIFIED
OPERATION

1080P
FULLHD IMAGE



XUN SERIES | Video Wall



1080P
FULLHD IMAGE



No matter what the requirement, NEC has the right video wall solution to fit virtually any application. Adaptable, scalable and modular, NEC offers unlimited creativity in capturing attention, engaging and delivering a compelling video wall experience. Trusted NEC quality is the professional choice for display technology and can provide the complete video wall solution from pre-configuration and mounting solutions to content management and after sales support.

46" and 55"

XUN Series

XUHD | Ultra High Resolution



NEC is ushering in a new era of visual experience with the MultiSync® UHD Series delivering content in 4KUHD resolution with four times the pixel count of Full HD. Loaded with innovative features and high end components, the UHD models deliver an extraordinary reality-like visual experience with a richness of detail and controlled colour reproduction.

65" to 98"

XUHD Series

4KUHD



XS | Super Slim



1080P
FULLHD IMAGE



The superslim MultiSync® XS Series delivers the longevity and reliability customers expect from a Large Format Display thanks to a professional display panel and proven NEC engineering excellence. The reduced depth and light weight makes it easy to handle and integrate into recesses and housings.

40" to 55"

XS Series



XHB | High Brightness

Sunlight reduces the readability of content so signage located in store front windows or in light drenched atrium spaces needs to present messages with higher brightness. NEC's XHB displays with ambient light sensor keeps power consumption to a minimum whilst maintaining eye-pleasing readability in even the brightest environments.

47" to 75"
XHB Series

1080P
FULLHD IMAGE



24/7
CERTIFIED OPERATION



Protective Glass

High quality Conturan® Schott glass ensures reduced reflection and high light transmission for an unrestricted view of display content. In addition it ensures maximum investment security, protecting the display panel against projectiles.

32"
V Series PG

84" to 98"
XUHD Series PG

40" to 55"
XS Series PG

40" to 80"
P Series PG



24/7
CERTIFIED OPERATION

1080P
FULLHD IMAGE

4K UHD

E Series | Entry Level Signage

| MultiSync® Model | E325 | E425 | E505 | E585 | E654 | E705 | E805 | E905 |
|---|-----------------------------------|--------------------|--------------------|-----------------------------------|------------------|------------------------|------------------|-------------------|
| Order Code | 60003725 | 60003726 | 60003727 | 60003728 | 60003487 | 60003928 | 60003929 | 60003930 |
| Panel Technology | S-PVA / Direct LED | S-PVA / Direct LED | S-PVA / Direct LED | S-PVA / Direct LED | VA / Direct LED | UV² A / Edge LED | UV² A / Edge LED | UV² A / Edge LED |
| Screen Size [inch / cm] | 31.5 / 82 | 42 / 107 | 50 / 127 | 58 / 147 | 65 / 165 | 70 / 177 | 80 / 203 | 90 / 229 |
| Brightness (max.) [cd/m²] | 300 | 300 | 300 | 350 | 350 | 400 | 350 | 350 |
| Contrast (typ.) | 3000:1 | 3000:1 | 5000:1 | 4000:1 | 4000:1 | 4000:1 | 5000:1 | 5000:1 |
| Viewing Angle horizontal / vertical [°] | 176 / 176 | 176 / 176 | 176 / 176 | 176 / 176 | 176 / 176 | 178 / 178 | 178 / 178 | 178 / 178 |
| Response Time (typ. G to G) [ms] | 6.5 | 6.5 | 8.5 | 9.5 | 6.5 | 8 | 4 | 4 |
| Haze Level (%) | 2 | 2 | 1 | 1 | 2 | 5 | 5 | 5 |
| Supported orientation | Landscape | Landscape | Landscape | Landscape | Landscape | Landscape | Landscape | Landscape |
| Native Resolution | 1366 x 768 | 1920 x 1080 | 1920 x 1080 | 1920 x 1080 | 1920 x 1080 | 1920 x 1080 | 1920 x 1080 | 1920 x 1080 |
| Connectivity | 3 HDMI, VGA, Component, Composite | | | 3 HDMI, VGA, Component, Composite | | 2 HDMI, DP, DVI-D, VGA | | |
| Power Consumption ECO [W] | 45 | 75 | 100 | 136 | 260 | 150 | 230 | 270 |
| Power Savings Mode [W] | <0.5 | <0.5 | <0.5 | <0.5 | <1 | <0.5 | <0.5 | <1 |
| Dimensions (W x H x D) [mm] | 727 x 424 x 77 | 960 x 555 x 77 | 1123 x 646 x 77 | 1301 x 759 x 109 | 1467 x 872 x 100 | 1587 x 920 x 87 | 1836 x 1061 x 87 | 2058 x 1184 x 123 |
| Weight [kg] | 4.9 | 10.1 | 11.9 | 21 | 30 | 47 | 61 | 81 |
| Bezel Width B / T - L - R [mm] | 16.1 / 11.9 | 14.9 / 11.9 | 14.9 / 11.9 | 20.3 / 13.8 | 47.7 / 18.9 | 23 / 23 | 29.7 / 29.7 | |
| Integrated Speakers | 2 x 5 W | 2 x 10 W | 2 x 10 W | 2 x 10 W | 2 x 10 W | 2 x 10 W | 2 x 10 W | 2 x 10 W |
| NaViSet Administrator 2 | - | - | - | - | - | • | • | • |

V Series | Value Signage

Signage Ready

| MultiSync® Model | V323-2 | V423 | V463 | V552 | V652 | V801 | V423-DRD | V463-DRD | V552-DRD |
|---|-----------------------------|---------------------|---------------------|-----------------------------|---------------------|---------------------|---------------------------------------|---------------------|---------------------|
| Order Code | 60003849 | 60003397 | 60003394 | 60003396 | 60003395 | 60003482 | 60003992 | 60003993 | 60003994 |
| Panel Technology | S-IPS / Edge LED | S-IPS / Edge LED | AMVA3 / Edge LED | AMVA3 / Edge LED | AMVA3 / Edge LED | UV2A / Edge LED | S-IPS / Edge LED | AMVA3 / Edge LED | AMVA3 / Edge LED |
| Screen Size [inch / cm] | 32 / 80 | 42 / 106.68 | 46 / 117 | 55 / 138.8 | 65 / 164 | 80 / 203.2 | 42 / 106.68 | 46 / 117 | 55 / 138.8 |
| Brightness (max.) [cd/m²] | 450 | 450 | 500 | 450 | 450 | 460 | 450 | 500 | 450 |
| Contrast (typ.) | 1300:1 | 1300:1 | 4000:1 | 4000:1 | 4000:1 | 5000:1 | 1300:1 | 4000:1 | 4000:1 |
| Viewing Angle horizontal / vertical [°] | 178 / 178 | 178 / 178 | 178 / 178 | 178 / 178 | 178 / 178 | 176 / 176 | 178 / 178 | 178 / 178 | 178 / 178 |
| Response Time (typ. G to G) [ms] | 8 | 12 | 6.5 | 6.5 | 8 | 6 | 12 | 6.5 | 6.5 |
| Haze Level (%) | 1 | 10 | 11 | 11 | 11 | 5 | 10 | 11 | 11 |
| Supported orientation | Landscape, Portrait | Landscape, Portrait | Landscape, Portrait | Landscape, Portrait | Landscape, Portrait | Landscape, Portrait | Landscape, Portrait | Landscape, Portrait | Landscape, Portrait |
| Native Resolution | 1920 x 1080 | 1920 x 1080 | 1920 x 1080 | 1920 x 1080 | 1920 x 1080 | 1920 x 1080 | 1920 x 1080 | 1920 x 1080 | 1920 x 1080 |
| Connectivity | HDMI, DP, DVI-D In/Out, VGA | | | HDMI, DP, DVI-D In/Out, VGA | | | HDMI, DP, DVI-D In/Out, VGA | | |
| Slot-In Option | OPS | OPS | OPS | OPS | OPS | OPS | Integrated OPS Digital Signage Player | | |
| Power Consumption ECO [W] | 49 | 88 | 76 | 96 | 185 | 223 | 49 | 88 | 76 |
| Power Savings Mode [W] | <1 | <1 | <1 | <1 | <1 | <1 | <1 | <1 | <1 |
| Dimensions (W x H x D) [mm] | 750 x 444 x 60 | 972 x 565 x 68 | 1058 x 612 x 65 | 1250 x 720 x 63 | 1540 x 909 x 88 | 1836 x 1061 x 86 | 972 x 565 x 68 | 1058 x 612 x 65 | 1249 x 720 x 63 |
| Weight [kg] | 9 | 16.8 | 18.9 | 26.5 | 52.0 | 60 | 16.8 | 18.9 | 26.5 |
| Bezel Width T - B / L - R [mm] | 24.0 / 24.0 | 18.3 / 18.3 | 18.3 / 18.3 | 18.3 / 18.3 | 50.5 / 53.5 | 29.7 / 29.7 | 18.3 / 18.3 | 18.3 / 18.3 | 18.3 / 18.3 |
| Integrated Speakers | 2 x 8 W | 2 x 10 W | 2 x 10 W | 2 x 10 W | 2 x 10 W | 2 x 10 W | 2 x 10 W | 2 x 10 W | 2 x 10 W |
| NaViSet Administrator 2 | • | • | • | • | • | • | • | • | • |

P Series | Professional Signage

| MultiSync® Model | P403 | P463 | P553 | P703 | P801 |
|----------------------------------|---|-----------------|-----------------|---|------------------|
| Order Code | 60003477 | 60003478 | 60003479 | 60003480 | 60003481 |
| Panel Technology | S-PVA / Edge LED | | | UV² A / Edge LED | |
| Screen Size [inch / cm] | 40 / 102 | 46 / 117 | 55 / 139 | 70 / 177 | 80 / 203 |
| Brightness (max.) [cd/m²] | 700 | 700 | 700 | 700 | 700 |
| Contrast (typ.) | 4000:1 | 4000:1 | 4000:1 | 5000:1 | 5000:1 |
| Viewing Angle Hor / Ver [°] | 178 / 178 | 178 / 178 | 178 / 178 | 178 / 178 | 178 / 178 |
| Response Time (typ. G to G) [ms] | 8 | 8 | 8 | 8 | 4 |
| Haze Level (%) | 44 | 44 | 44 | 5 | 5 |
| Supported Orientation | Landscape, Portrait, Face Up, Face Down | | | Landscape, Portrait, Face Up, Face Down | |
| Native Resolution | 1920 x 1080 | 1920 x 1080 | 1920 x 1080 | 1920 x 1080 | 1920 x 1080 |
| Connectivity | DVI-D, HDMI, DP In/Out, LAN | | | DVI-D, HDMI, DP In/Out, LAN | |
| Slot-In Option | OPS, Interface Extension Slot | | | OPS, Interface Extension Slot | |
| Power Consumption ECO [W] | 105 | 120 | 150 | 150 | 235 |
| Power Savings Mode [W] | <1 | <1 | <1 | <1 | <1 |
| Dimensions (W x H x D) [mm] | 920 x 532 x 66 | 1055 x 608 x 64 | 1250 x 721 x 65 | 1587 x 920 x 86 | 1836 x 1061 x 86 |
| Weight [kg] | 17.0 | 21.4 | 25.3 | 47.0 | 61.5 |
| Bezel Width T - B / L - R [mm] | 15.5 | 16.5 | 18.5 | 23.0 | 29.7 |
| Integrated Speakers | 2 x 10 W | 2 x 10 W | 2 x 10 W | 2 x 10 W | 2 x 10 W |
| NaViSet Administrator 2 | • | • | • | • | • |

XUN Series | Video Wall

| MultiSync® Model | X464UNV-2 | X464UN-2 | X464UNS | X554UNV | X554UN-2 | X554UNS | X555UNS | X555UNV |
|----------------------------------|-------------------------------|-----------------------------|------------------------------|-----------------------------|------------------------------|-----------------------------|------------------------------|------------------|
| Order Code | 60003791 | 60003790 | 60003722 | 60003723 | 60003789 | 60003673 | 60003905 | 60003906 |
| Panel Technology | S-PVA / Direct LED | S-PVA / Direct LED | S-PVA / Direct LED | S-PVA / Direct LED | S-PVA / Direct LED | S-PVA / Direct LED | IPS / Direct LED | IPS / Direct LED |
| Screen Size [inch / cm] | 46 / 117 | 46 / 117 | 46 / 117 | 55 / 139 | 55 / 139 | 55 / 139 | 55 / 139 | 55 / 139 |
| Brightness (Max.) [cd/m²] | 500 | 700 | 700 | 700 | 700 | 700 | 700 | 500 |
| Contrast (typ.) | 3500:1 | 3500:1 | 3500:1 | 3500:1 | 3500:1 | 3500:1 | 1200:1 | 1200:1 |
| Viewing Angle Hor / Vert [°] | 178 / 178 | 178 / 178 | 178 / 178 | 178 / 178 | 178 / 178 | 178 / 178 | 178 / 178 | 178 / 178 |
| Response Time (typ. G to G) [ms] | 8 | 8 | 8 | 8 | 8 | 8 | 12 | 12 |
| Haze Level (%) | 44 | 44 | 44 | 44 | 44 | 44 | 44 | 44 |
| Supported Orientation | Landscape, Portrait, Face Up | | Landscape, Portrait, Face Up | | Landscape, Portrait, Face Up | | Landscape, Portrait, Face Up | |
| Native Resolution | 1920 x 1080 | 1920 x 1080 | 1920 x 1080 | 1920 x 1080 | 1920 x 1080 | 1920 x 1080 | 1920 x 1080 | 1920 x 1080 |
| Connectivity | DVI-D, HDMI, DP In/Out, VGA | DVI-D, HDMI, DP In/Out, VGA | DVI-D, HDMI, DP In/Out, VGA | DVI-D, HDMI, DP In/Out, VGA | DVI-D, HDMI, DP In/Out, VGA | DVI-D, HDMI, DP In/Out, VGA | DVI-D, HDMI | DVI-D, HDMI |
| Slot-In Option | OPS, Interface Extension Slot | | | | | | | |
| Power Consumption ECO [W] | 90 | 120 | 120 | 120 | 146 | 143 | 175 | 138 |
| Power Savings Mode [W] | <1 | <1 | <1 | <1 | <1 | <1 | <1 | <1 |
| Dimensions (W x H x D) [mm] | 1024 x 578 x 117 | 1024 x 578 x 100 | 1022 x 576 x 101 | 1213 x 684 x 100 | 1215 x 686 x 99 | 1213 x 684 x 100 | 1213 x 684 x 95 | 1213 x 684 x 95 |
| Weight [kg] | 24.3 | 23.0 | 20.4 | 25.9 | 29.2 | 27.9 | 30.3 | 30.3 |
| Bezel Width T - B / L - R [mm]* | 3.8 / 1.8 | 3.7 / 1.8 | 2.3 / 1.2 | 2.3 / 1.2 | 3.7 / 1.8 | 2.3 / 1.2 | 2.3 / 1.2 | 2.3 / 1.2 |
| Integrated Speakers | - | - | - | - | - | - | - | - |
| NaViSet Administrator 2 | • | • | • | • | • | • | • | • |

* Dimensions may vary due to manufacturing tolerances

| MultiSync® Model | X651UHD | X841UHD | X981UHD | X401S | X462S | X552S | X474HB | X754HB* |
|----------------------------------|------------------------------|------------------|--------------------|------------------------------|------------------|------------------|-------------------------------|--------------------|
| Order Code | 60003676 | 60003675 | 60003721 | 60003327 | 60003399 | 60003329 | 60003674 | 60003913 |
| Panel Technology | S-IPS / Edge LED | S-IPS / Edge LED | S-IPS / Direct LED | S-PVA / Edge LED | S-PVA / Edge LED | S-PVA / Edge LED | S-IPS / Direct LED | S-PVA / Direct LED |
| Screen Size [inch / cm] | 65 / 164 | 84 / 214 | 98 / 249 | 40 / 102 | 46 / 117 | 55 / 139 | 47 / 119 | 75 / 191 |
| Brightness (Max.) [cd/m²] | 450 | 500 | 500 | 700 | 700 | 700 | 2000 | 2500 |
| Contrast (typ.) | 1300:1 | 1400:1 | 1300:1 | 3500:1 | 4000:1 | 4000:1 | 1300:1 | 5000:1 |
| Viewing Angle Hor / Vert [°] | 178 / 178 | 178 / 178 | 178 / 178 | 178 / 178 | 178 / 178 | 178 / 178 | 178 / 178 | 178 / 178 |
| Response Time (typ. G to G) [ms] | 8 | 12 | 8 | 8 | 8 | 8 | 10 | 6 |
| Haze Level (%) | 10 | 10 | 1 | 44 | 44 | 44 | 2 | 1 |
| Supported Orientation | Landscape, Portrait, Face Up | | | Landscape, Portrait, Face Up | | | Landscape, Portrait | |
| Native Resolution | 3840 x 2160 | 3840 x 2160 | 3840 x 2160 | 1920 x 1080 | 1920 x 1080 | 1920 x 1080 | 1920 x 1080 | 1920 x 1080 |
| Connectivity | DVI-D, HDMI, DP | | | DVI-D In/Out, HDMI, DP, VGA | | | DVI-D In/Out, HDMI, DP, VGA | |
| Slot-In Option | OPS | OPS | OPS | OPS | OPS | OPS | OPS, Interface Extension Slot | |
| Power Consumption ECO [W] | 200 | 500 | 560 | 140 | 160 | 205 | 260 | 540 |
| Power Use Savings Mode [W] | <1 | <1 | <1 | <1 | <1 | <1 | <1 | <1 |
| Dimensions (W x H x D) [mm] | 1468 x 879 x 87 | 1931 x 1117 x 85 | 2204 x 1259 x 108 | 925 x 537 x 43 | 1059 x 613 x 46 | 1254 x 725 x 46 | 1084 x 628 x 147 | 1694 x 972 x 146 |
| Weight [kg] | 41 | 70 | 95 | 14.9 | 20.7 | 24.5 | 26.9 | 62 |
| Bezel Width T - B / L - R [mm] | 19 | 32.6 | 19.9 | 18.0 | 18.7 | 20.5 | 19.3 | 21 |
| Integrated Speakers | 2 x 10 W | 2 x 10 W | 2 x 10 W | 2 x 5 W | 2 x 5 W | 2 x 5 W | 2 x 10 W | 2 x 10 W |
| NaViSet Administrator 2 | • | • | • | • | • | • | • | • |

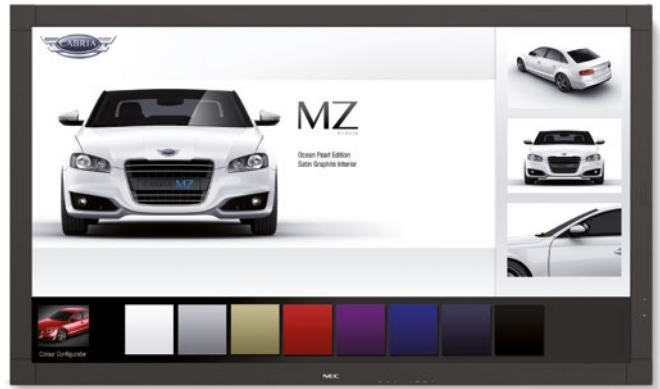
Protective Glass

| MultiSync® Model | V323-2 PG | P403 PG | P463 PG | P553 PG | P703 PG | P801 PG |
|---|--------------------------------------|----------------|--------------------------------------|-------------------|--------------------------------------|------------------|
| Order Code | 60003995 | 60003701 | 60003702 | 60003703 | 60003707 | 60003708 |
| Base Model | V323-2 | P403 | P463 | P553 | P703 | P801 |
| All specs same as base model except for those listed below | | | | | | |
| Dimensions (W x H x D) [mm] | 750 x 444.5 x 66 | 920 x 532 x 73 | 1055 x 608 x 70 | 1250 x 721 x 70.8 | 1587 x 9196 x 99 | 1836 x 1061 x 95 |
| Weight [kg] | 12.6 | 21.7 | 27.7 | 35.1 | 64.6 | 85.2 |
| Bezel Width T-B / L-R [mm] | 24.0 / 24.0 | 15.5 / 15.5 | 16.5 / 16.5 | 18.5 / 18.5 | 23.0 / 23.0 | 29.7 / 29.7 |
| Glass | 4mm Conturan® glass by Schott | | 4mm Conturan® glass by Schott | | 5mm Conturan® glass by Schott | |
| Coating | Double sided anti-reflective coating | | Double sided anti-reflective coating | | Double sided anti-reflective coating | |
| Light Transmission [%] | 97 | 97 | 97 | 97 | 97 | 97 |
| Reflection Rate [%] | <1 | <1 | <1 | <1 | <1 | <1 |

| MultiSync® Model | X401S PG | X462 PG | X552 PG | X841UHD PG | X981UHD PG |
|---|--------------------------------------|-----------------|-----------------|--------------------------------------|-------------------|
| Order Code | 60003437 | 60003433 | 60003432 | 60003985 | 60003983 |
| Base Model | X401S | X462S | X552S | X841UHD | X981UHD |
| All specs same as base model except for those listed below | | | | | |
| Dimensions (W x H x D) [mm] | 925 x 537 x 48 | 1059 x 613 x 51 | 1254 x 725 x 51 | 1931 x 1117 x 99 | 2204 x 1259 x 122 |
| Weight [kg] | 19.9 | 27.0 | 33.5 | 102 | 132 |
| Bezel Width T-B / L-R [mm] | 18.0 / 18.0 | 18.7 / 18.7 | 20.5 / 20.5 | 32.6 / 32.6 | 19.9 / 19.9 |
| Glass | 4mm Conturan® glass by Schott | | | 6mm Conturan glass by Schott | |
| Coating | Double sided anti-reflective coating | | | Double sided anti-reflective coating | |
| Light Transmission [%] | 97 | 97 | 97 | 97 | 97 |
| Reflection Rate [%] | <1 | <1 | <1 | <1 | <1 |

Multi-Touch Series

Based on the latest touch technology these displays deliver true multi-touch support with fast response times and a high level of accuracy. All NEC interactive displays are plug & play, without the need to install any external driver software. Thanks to an anti-reflective coating, reflections are reduced to a minimum which significantly increases the readability of the content shown.

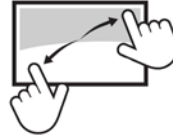


70" to 90" **127**
E Series Touch CERTIFIED OPERATION

40" to 80" **247**
P Series Touch CERTIFIED OPERATION

42" to 80" **167**
V Series Touch CERTIFIED OPERATION

65" to 98" **247**
XUHD Series Touch CERTIFIED OPERATION



1080P
FULLHD IMAGE



4K UHD

Multi-Touch Displays

| MultiSync® Model | E705 SST | E805 SST | E905 SST | V423 TM | V463 TM | V552 TM | V652 TM | V801 TM |
|--|--|-----------------------|-----------------------|-------------------------------------|-----------------------|-----------------------|-------------------------------------|-----------------------|
| Order Code | 60003922 | 60003923 | 60003981 | 60003550 | 60003551 | 60003678 | 60003553 | 60003679 |
| Supported Orientation | Landscape | Landscape | Landscape | Landscape, Portrait | Landscape, Portrait | Landscape, Portrait | Landscape, Portrait | Landscape, Portrait |
| Base Model | E705 | E805 | E905 | V423 | V463 | V552 | V652 | V801 |
| All specs same as base model except for those listed below | | | | | | | | |
| Haze Level | 5 | 5 | 5 | 10 | 11 | 11 | 11 | 5 |
| Brightness (max.) | 400 | 350 | 350 | 430 | 480 | 450 | 450 | 460 |
| Power Consumption ECO [W] | 158 | 227 | 278 | 87 | 77 | 96 | 178 | 218 |
| Dimensions (W x H x D) [mm] | 1657 x 968 x 105 | 1878 x 1097 x 104 | 2122 x 1248 x 138 | 1008 x 601 x 83 | 1095 x 650 x 80 | 1294 x 765 x 86 | 1540 x 909 x 102 | 1842 x 1067 x 107 |
| Weight [kg] | 70 | 85 | 105 | 24.7 | 27.7 | 40.8 | 68.3 | 79.9 |
| Bezel Width T-B / L-R [mm] | 33.0 / 41.0 | 40.0 / 40.0 | 40.0 / 40.0 | 32.0 / 32.0 | 32.8 / 32.8 | 41.4 / 41.4 | 50.5 / 53.5 | 34.8 / 34.8 |
| Touch Technology | ShadowSense™ | ShadowSense™ | ShadowSense™ | Optical Camera | Optical Camera | Infrared | Optical Camera | Infrared |
| Protective Glass | 5mm | 5mm | 5mm | 4mm | 4mm | 4mm | 5mm | 3mm |
| Coating | Single sided anti-reflective coated (anti-glare) | | | Double sided anti-reflective coated | | | Double sided anti-reflective coated | |
| Touch Points | up to 10 | up to 10 | up to 10 | up to 5 | up to 5 | up to 6 | up to 5 | up to 6 |
| Input Method | Finger, Stylus, Glove | Finger, Stylus, Glove | Finger, Stylus, Glove | Finger, Stylus, Glove | Finger, Stylus, Glove | Finger, Stylus, Glove | Finger, Stylus, Glove | Finger, Stylus, Glove |
| Light Transmission [%] | 92 | 92 | 92 | 96 | 96 | 96 | 96 | 96 |
| Reflection [%] | 2 | 2 | 2 | 2 | 2 | 2 | 2 | 2 |

| MultiSync® Model | P403 SST | P463 SST | P553 SST | P703 SST | P801 SST | X651UHD SST | X841UHD SST | X981UHD SST |
|--|--|-----------------------|-----------------------|--|-----------------------|--|-----------------------|-----------------------|
| Order Code | 60003767 | 60003768 | 60003769 | 60003770 | 60003766 | 60003990 | 60003881 | 60003982 |
| Supported Orientation | Face Up, Landscape, Portrait | | | Face Up, Landscape, Portrait | | Face Up, Landscape, Portrait | | |
| Base Model | P403 | P463 | P553 | P703 | P801 | X651UHD | X841UHD | X981UHD |
| All specs same as base model except for those listed below | | | | | | | | |
| Haze Level | 44 | 44 | 44 | 5 | 5 | 10 | 10 | 1 |
| Brightness (max.) | 700 | 700 | 700 | 700 | 700 | 450 | 500 | 500 |
| Power Consumption [W] | 122 | 124 | 150 | 157 | 239 | 167 | 342 | 360 |
| Dimensions (W x H x D) [mm] | 968 x 587 x 82 | 1106 x 660 x 82 | 1328 x 789 x 79 | 1657 x 968 x 105 | 1878 x 1097 x 104 | 1532 x 910 x 103 | 2000 x 1194 x 105 | 2276 x 1329 x 123 |
| Weight [kg] | 24 | 32 | 37 | 70 | 85 | 70 | 110 | 150 |
| Bezel Width T-B / L-R [mm] | 39.0 / 39.0 | 40.0 / 40.0 | 40.0 / 40.0 | 33.0 / 42.0 | 40.0 / 40.0 | 42.0 / 42.0 | 41.0 / 41.0 | 45.0 / 45.0 |
| Touch Technology | ShadowSense™ | ShadowSense™ | ShadowSense™ | ShadowSense™ | ShadowSense™ | ShadowSense™ | ShadowSense™ | ShadowSense™ |
| Protective Glass | 3mm | 3mm | 4mm | 5mm | 5mm | 4mm | 5mm | 5mm |
| Coating | Single sided anti-reflective coated (anti-glare) | | | Single sided anti-reflective coated (anti-glare) | | Single sided anti-reflective coated (anti-glare) | | |
| Touch Points | up to 10 | up to 10 | up to 10 | up to 10 | up to 10 | up to 10 | up to 10 | - |
| Input Method | Finger, Stylus, Glove | Finger, Stylus, Glove | Finger, Stylus, Glove | Finger, Stylus, Glove | Finger, Stylus, Glove | Finger, Stylus, Glove | Finger, Stylus, Glove | Finger, Stylus, Glove |
| Light Transmission [%] | 92 | 92 | 92 | 92 | 92 | 92 | 92 | 92 |
| Reflection [%] | 2 | 2 | 2 | 2 | 2 | 2 | 2 | 2 |

| Model | Slot-in Option | | | | | | | | | | | | | | |
|--------------------|----------------|---------------------|-------------------------------|-----------|-----------|-----------|-----------|-----------|-----------|-----------|-----------|-----------|-----------|-----------|-----------|
| | Order Code | Format | Slot Option | 100013752 | 100013751 | 100013808 | 100013594 | 100013595 | 100012893 | 100012947 | 100013538 | 100013612 | 100013510 | 100013511 | 100013512 |
| | | OPS | Celeron N2807 2 x 1.58 GHz | • | • | • | • | • | • | • | • | • | • | • | • |
| | | OPS | Celeron 2000E 2 x 2.2GHz | • | • | • | • | • | • | • | • | • | • | • | • |
| | | OPS | Core i3 4100E 2 x 2.4 GHz | • | • | • | • | • | • | • | • | • | • | • | • |
| | | OPS | Core i5 4400E 2 x 2.7 GHz | • | • | • | • | • | • | • | • | • | • | • | • |
| | | OPS | Core i7 4700EQ 4 x 2.4 GHz | • | • | • | • | • | • | • | • | • | • | • | • |
| | | OPS | HD-SDI 1.5G | • | • | • | • | • | • | • | • | • | • | • | • |
| | | OPS | HD-SDI 3G | • | • | • | • | • | • | • | • | • | • | • | • |
| | | OPS | Digital Signage Player | • | • | • | • | • | • | • | • | • | • | • | • |
| | | OPS | HDBaseT Receiver | • | • | • | • | • | • | • | • | • | • | • | • |
| | | Interface Extension | Analog Video Expansion Board | • | • | • | • | • | • | • | • | • | • | • | • |
| | | Interface Extension | BNC Expansion Board | • | • | • | • | • | • | • | • | • | • | • | • |
| | | Interface Extension | Digital Video Expansion Board | • | • | • | • | • | • | • | • | • | • | • | • |
| X464UNV-2 | Compatibility | | | • | • | • | • | • | • | • | • | • | • | • | • |
| X464 | | | | • | • | • | • | • | • | • | • | • | • | • | • |
| X464UNS | | | | • | • | • | • | • | • | • | • | • | • | • | • |
| X554UN-2 | | | | • | • | • | • | • | • | • | • | • | • | • | • |
| X555UNS | | | | • | • | • | • | • | • | • | • | • | • | • | • |
| X555UNV | | | | • | • | • | • | • | • | • | • | • | • | • | • |
| X401S (PG) | | | | - | - | - | • | • | • | • | • | • | • | • | • |
| X462S (PG) | | | | - | - | - | • | • | • | • | • | • | • | • | • |
| X552S (PG) | | | | - | - | - | • | • | • | • | • | • | • | • | • |
| P403 (PG,SST)* | | | | • | • | • | • | • | • | • | • | • | • | • | • |
| P463 (PG,SST)* | | | | • | • | • | • | • | • | • | • | • | • | • | • |
| P553 (PG,SST)* | | | | • | • | • | • | • | • | • | • | • | • | • | • |
| P703 (PG,SST)* | | | | • | • | • | • | • | • | • | • | • | • | • | • |
| P801 (PG,SST)* | | | | • | • | • | • | • | • | • | • | • | • | • | • |
| P403 (PG,SST)* | | | | • | • | • | • | • | • | • | • | • | • | • | • |
| P463 (PG,SST)* | | | | • | • | • | • | • | • | • | • | • | • | • | • |
| P553 (PG,SST)* | | | | • | • | • | • | • | • | • | • | • | • | • | • |
| P703 (PG,SST)* | | | | • | • | • | • | • | • | • | • | • | • | • | • |
| P801 (PG,SST)* | | | | • | • | • | • | • | • | • | • | • | • | • | • |
| V323-2 (PG) | | | | • | • | • | • | • | • | • | • | • | - | - | - |
| V423 (TM)* | | | | • | • | • | • | • | • | • | • | • | - | - | - |
| V463 (TM)* | | | | • | • | • | • | • | • | • | • | • | - | - | - |
| V552 (TM)* | | | | • | • | • | • | • | • | • | • | • | - | - | - |
| V652 (TM)* | | | | • | • | • | • | • | • | • | • | • | - | - | - |
| V801 (TM)* | | | | • | • | • | • | • | • | • | • | • | - | - | - |
| E325 | | | | • | • | • | • | • | • | • | • | • | - | - | - |
| E425 | | | | • | • | • | • | • | • | • | • | • | - | - | - |
| E505 | | | | • | • | • | • | • | • | • | • | • | - | - | - |
| E585 | | | | • | • | • | • | • | • | • | • | • | - | - | - |
| E654 | | | | • | • | • | • | • | • | • | • | • | - | - | - |
| E705 (SST)* | | | | • | • | • | • | • | • | • | • | • | - | - | - |
| E805 (SST)* | | | | • | • | • | • | • | • | • | • | • | - | - | - |
| E905 (SST)* | | | | • | • | • | • | • | • | • | • | • | - | - | - |
| X474HB | | | | • | • | • | • | • | • | • | • | • | - | - | - |
| X651UHD (SST)* | | | • | • | • | • | • | • | • | • | • | - | - | - | |
| X841UHD (PG, SST)* | | | • | • | • | • | • | • | • | • | • | - | - | - | |
| X981UHD (PG, SST)* | | | • | • | • | • | • | • | • | • | • | - | - | - | |



OPS Slot-In PC



OPS HD-SDI Board



OPS Slot

Definitions

| | |
|---|----------------|
| • | Compatible |
| - | Not Compatible |

*Please note: Multi-touch is only supported by OPS PC's using Windows 7P. Windows 7 embedded does not support multi-touch.

LED Modules



Indoor and outdoor LED video wall modules enable creative attention grabbing walls of intensely bright images for the brightest environments and long distance viewing.

3 YEARS WARRANTY
UP TO 5 YEARS OPTIONAL WARRANTY

LED Modules

- | | |
|-------------|--|
| Indoor LED | Modular LED systems create stunning visuals, inspiring with a high-level to detail and perfect readability. Designed for low operational costs and high product longevity combined with a state of the art appearance. |
| Outdoor LED | Weather-protected LED systems to attract people with crisp and large images perfectly visible even from far viewing distances and under bright conditions. |

Indoor

Combining ultimate visual experience with maximum versatility, the new indoor LED products provide crystal clear and extra sharp image quality. The LED LiFT fine pitch LED products ranging from 1,5 – 3,8mm are perfectly supporting any high definition content visualisation and can be installed for use in many areas including auditoriums, reception areas, retail stores, control rooms, museums, broadcasting, transportation hubs and meeting rooms. Minimised maintenance times and efforts are ensured thanks to its highly intelligent, front serviceable cabinet design.

The LED TiLE series LED products ranging from 2 – 10mm guarantee perfect readability in any lighting condition while minimising unnecessary power use and reducing the total cost of ownership. Thanks to an extremely flexible and lightweight design, the LED TiLE pixel cards fit almost every space and can be deployed in many different applications.

1.5mm to 10.0mm

LED Modules



Outdoor

The Outdoor LED systems shine bright in areas with high levels of ambient light and where the harsh environment of sunlight or rain would usually affect the performance. The wide range of outdoor products allows perfect readability from any viewing distance. Thanks to the highest flexibility in system modularity, there is almost no limitation in screen size. Low operational and maintenance costs and a high durability support a safe and future-proof investment, be it in transportation hubs, Digital out of Home (DooH), leisure and entertainment or mediatecture and digital surface applications.

6mm to 20.0mm

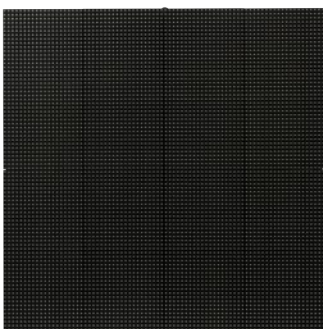
LED Modules



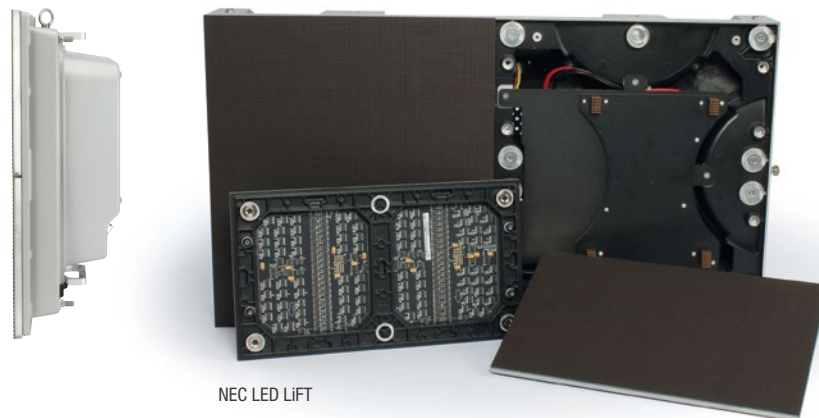
Indoor LED Modules

| | LED04AF1 | LED06AF1 | LED06F1V | L015Si* | L019Si* | T020Si* |
|--|--------------------------------------|--------------------------------------|--------------------------------------|------------------------|------------------------|------------------------|
| Order Code | 60003654 | 60003000 | 60003557 | 60004139 | 60004123 | 60004126 |
| Pixel Configuration | 3-in-1 SMD (Black) | 3-in-1 SMD (Black) | 3-in-1 SMD (White) | 3-in-1 SMD | 3-in-1 SMD | 3-in-1 SMD (Black) |
| Number of Pixel per m ² | 45369 | 25600 | 25600 | 398892 | 277008 | 250000 |
| Pixel Pitch [mm] | 4.69 | 6.25 | 6.25 | 1.583 | 1.9 | 2 |
| Brightness (typ.) [cd/m ²] | 2000 | 2000 | 3000 | 900 | 900 | 1200 |
| Contrast Ratio (typ.) | 2000:1 | 3500:1 | 2000:1 | 3000:1 | 3000:1 | 3000:1 |
| Colour Processing | 14 bit | 14 bit | 14 bit | 16 bit | 16 bit | 16 bit |
| Dimming Capability | 64 level | 64 level | 64 level | 100 level | 100 level | 100 level |
| Gamma Correction | Yes | Yes | Yes | Yes | Yes | Yes |
| Refresh Rate | > 19200 Hz | 19200 Hz | 19200 Hz | > 3000 Hz | > 3000 Hz | > 2000 Hz |
| Digital Inputs | Circular, DVI with RS-422 | DVI-D Dual Link In/Out | DVI-D Dual Link In/Out | DVI-D Dual Link In/Out | DVI-D Dual Link In/Out | DVI-D Dual Link In/Out |
| Power Use on Mode [W] | 135W (Full White); 45W (50% grey) | 235W (Full White); 75W (50% grey) | 130W (Full White); 60W (50% grey) | 720W max | 720W max | 900W max |
| Dimensions (W x H x D) [mm] | 300 x 300 x 120 | 500 x 500 x 170 | 500 x 500 x 170 | 342 x 608 x 90 | 342 x 608 x 90 | 480 x 480 x 90 |
| Weight per sqm [kg] | 50 | 50.8 | 50.8 | 35.7 | 35.7 | 50 |
| IP Level | IP2 | IP20 | IP20 | IP30 | IP30 | IP21 |

| | L023Si* | L038Si* | T040Si* | T060Si* | T100Si* |
|--|------------------------|------------------------|------------------------|------------------------|------------------------|
| Order Code | 60004124 | 60004125 | 60004127 | 60004128 | |
| Pixel Configuration | 3-in-1 SMD | 3-in-1 SMD | 3-in-1 SMD (Black) | 3-in-1 SMD | 3-in-1 SMD |
| Number of Pixel per m ² | 178000 | 69570 | 62500 | 27777 | 10000 |
| Pixel Pitch [mm] | 2.375 | 3.8 | 4 | 6 | 10 |
| Brightness (typ.) [cd/m ²] | 1200 | 1200 | 1800 | 2000 | 3000 |
| Contrast Ratio (typ.) | 3000:1 | 3000:1 | 3000:1 | 3000:1 | 5000:1 |
| Colour Processing | 16 bit | 16 bit | 16 bit | 16 bit | 16 bit |
| Dimming Capability | 100 level | 100 level | 100 level | 100 level | 100 level |
| Gamma Correction | Yes | Yes | Yes | Yes | Yes |
| Refresh Rate | > 3000 Hz | > 3000 Hz | > 4200 Hz | > 4200 Hz | > 4200 Hz |
| Digital Inputs | DVI-D Dual Link In/Out | DVI-D Dual Link In/Out | DVI-D Dual Link In/Out | DVI-D Dual Link In/Out | DVI-D Dual Link In/Out |
| Power Use on Mode [W] | 720W max | 720W max | 900W max | 700W max | 640W max |
| Dimensions (W x H x D) [mm] | 342 x 608 x 90 | 342 x 608 x 90 | 512 x 512 x 160 | 480 x 480 x 160 | 960 x 960 x 160 |
| Weight [kg] | 35.7 | 35.7 | 50 | 50 | 50 |
| IP Level | IP30 | IP30 | IP21 | | IP21 |



NEC LED TILE



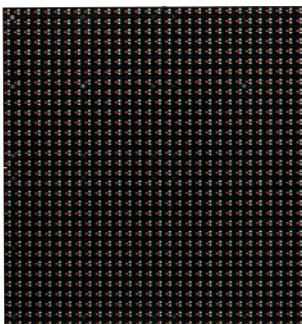
NEC LED LIFT

* Specification subject to change until launch

Outdoor LED Modules

| | LED10BF1 | LED15BF1 | LED20BF1 | T060Se* | T080Se* |
|--|--------------------------------------|--------------------------------------|--------------------------------------|------------------------|------------------------|
| Order Code | 60003508 | 60003001 | 60003511 | 60004142 | |
| Pixel Configuration | 3-in-1 SMD (Black) | 1R / 1G / 1B discrete LED | 1R / 1G / 1B discrete LED | 3-in-1 SMD | 3-in-1 SMD |
| Number of Pixel per m ² | 9216 | 4096 | 2304 | 27777 | 15625 |
| Pixel Pitch [mm] | 10.417 | 15.625 | 20.83 | 6 | 8 |
| Brightness (typ.) [cd/m ²] | 6000 | 7500 | 7500 | 6000 | 6000 |
| Contrast Ratio (typ.) | 4000:1 | 4500:1 | 4500:1 | 5000:1 | 5000:1 |
| Colour Processing | 16 bit | 16 bit | 16 bit | 16 bit | 16 bit |
| Dimming Capability | 64 level | 64 level | 64 level | 100 level | 100 level |
| Gamma Correction | Yes | Yes | Yes | Yes | Yes |
| Refresh Rate | 19200 Hz | 19200 Hz | 19200 Hz | > 4200 Hz | > 4200 Hz |
| Digital Inputs | DVI-D Dual Link In/Out | DVI-D Dual Link In/Out | DVI-D Dual Link In/Out | DVI-D Dual Link In/Out | DVI-D Dual Link In/Out |
| Power Use on Mode [W] | 145W (Full White); 65W (50% grey) | 135W (Full White); 45W (50% grey) | 135W (Full White); 45W (50% grey) | 950W max | 950W max |
| Dimensions (W x H x D) [mm] | 500 x 500 x 190 | 500 x 500 x 190 | 500 x 500 x 188 | 1152 x 1152 x 210 | 1152 x 1152 x 210 |
| Weight per sqm [kg] | 51.2 | 56 | 54.4 | 50 | 50 |
| IP Level | IP65 | IP65 | IP65 | IP65 | IP65 |

| | T100Se* | T160Se* | T160SeD* | T200SeD* |
|--|------------------------|------------------------|------------------------|------------------------|
| Order Code | 60004140 | | | |
| Pixel Configuration | 3-in-1 SMD | 3-in-1 SMD | DIP | DIP |
| Number of Pixel per m ² | 10000 | 3906 | 3906 | 2500 |
| Pixel Pitch [mm] | 10 | 16 | 16 | 20 |
| Brightness (typ.) [cd/m ²] | 6000 | 6000 | 7000 | 6500 |
| Contrast Ratio (typ.) | 5000:1 | 6000:1 | 6000:1 | 6000:1 |
| Colour Processing | 16 bit | 16 bit | 16 bit | 16 bit |
| Dimming Capability | 100 level | 100 level | 100 level | 100 level |
| Gamma Correction | Yes | Yes | Yes | Yes |
| Refresh Rate | > 4200 Hz | > 4200 Hz | > 4200 Hz | > 4200 Hz |
| Digital Inputs | DVI-D Dual Link In/Out | DVI-D Dual Link In/Out | DVI-D Dual Link In/Out | DVI-D Dual Link In/Out |
| Power Use on Mode [W] | 950W max | 850W max | 750W max | 650W max |
| Dimensions (W x H x D) [mm] | 1280 x 960 x 210 | 1024 x 1024 x 210 | 1280 x 960 x 210 | 1280 x 960 x 210 |
| Weight [kg] | 50 | 50 | 50 | 50 |
| IP Level | IP65 | IP65 | IP65 | IP65 |



Software



Naviset Administrator 2

All-in-one support system for NEC products

NaViSet Administrator 2 is an all-in-one remote support solution that manages the majority of NEC display devices and Windows computers. It is ideal for multidevice installations over larger infrastructures, for example in the corporate/large businesses, transportation, energy and utility, leisure and museum, finance, retail industries.

For more detailed information please visit:
www.nec-display-solutions.com/naviset



Hiperwall Video Wall Solution

Video wall Content and Source Management Software

The preferred choice in mission critical application, such as command and control to show essential information, are video walls or numerous LFDs. It becomes more and more important to deal with big data in order to provide situational awareness.

Hiperwall - a software connecting to infinite output displays and unlimited numbers of sources - perfectly supports this. Based on a defined network, it offers scalability, eliminates pricy servers, matrix switches and distributors while enabling the user to simply determine both size and position of the content.



NEC Displaynote

Next Generation Interactive Learning

DisplayNote NEC Edition is the latest interactive whiteboard tablet solution, which combines advanced collaboration tools with the market leading utilities available with NEC Projectors and Large Format Displays to create the ideal collective presentation solution for learning establishments.

For more detailed information please visit:
www.displaynote-nec.com



Fieldanalyst

Anonymous Video Analytics (AVA)

FieldAnalyst software is based on facial detection. It automatically detects human presence while estimating age, gender, distance and viewing time, counting the number of people from anonymous images captured by video cameras. This is delivering a basis for staffing, providing feedback about advertising efforts by counting traffic or enabling dynamic adoption of digital signage content to address the target group actually present.

FieldAnalyst is providing the tool to create & measure successful communication base on real-time data – potentially connecting the offline world to be online.



leafengine

Context Aware Digital Signage with leafengine

To create smarter signage, it is necessary to consider the context: Has a product been picked-up to give additional information? Is there someone close to a display to get more details? Connecting sensors individually into digital signage proves to be a challenge for scalability.

The leafengine offers a single interface to a growing number of sensors: Engaging customers by delivering essential information and providing statistical data about customer presence and perception. A middleware enabling quick and scalable integration supporting digital signage to adopt the Internet of Things!



Vukunet

The Engine that Powers the DOOH Industry

VUKUNET is an internet-based AdServing platform that connects all DOOH media networks in order to simplify planning, buying and delivering an advertising campaign. Developed by NEC, it forms part of a market leading suite of digital signage products and services.

For more detailed information please visit:
www.vukunet-nec.com



Projectors

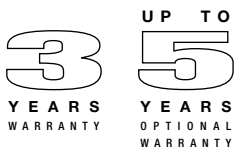


Our award-winning projector range offers products for all needs, from portable devices via business projectors to products for permanent operation (such as PoS applications) as well as Digital Cinema projectors delivering the most exceptional image quality, brightness, resolution, contrast and colour together with a wealth of new revenue generation opportunities.

Education

With a traditional focus on Education, many of our projectors include special education warranties and solutions bundled with free software that helps you get connected, share content or maintain control when the remote is lost!

More information on NEC Education Solutions:
www.education-nec.com



Mobile Projectors

- L Series Ideal for presentation on the move, ultra-light weight and elegant
- V Series For classrooms, small meeting rooms, private/professional and mobile

Desktop Projectors

- M Series Suited for classrooms and small to medium sized meeting rooms

Short Throw Projectors

- M Series Suited for classrooms and small to medium sized meeting rooms.

Ultra Short Throw Projectors

- U-UM-UMi For meeting rooms and digital signage applications, as well as for classrooms where space is at a premium

Professional Projectors

- P Series Best solution for larger meeting rooms and university lecture halls
- M Series Suited for classrooms and small to medium sized meeting rooms

Installation Projectors

- PA Series Ideal for corporate, high education and rental.
- PX Series Rental / staging, large corporate, high education, conference room, museums
- PH Series Best solution for rental/staging, high education and digital signage museums

Digital Cinema Projectors

- NC Series Cinema projectors for multi-national chains and single venues

Mobile Projectors

Compact, lightweight projectors with attractive design. Ideal for mobile presentation or desktop applications.

1000 - 3300 ANSI Lumen

L102W LED

V Series



Desktop Projectors

Flexible and professional desktop projectors – predestined for business and educational use.

2700 - 4000 ANSI Lumen

M Series



Short-Throw Projectors

Short-throw lens eliminates the shadows and glare caused by traditional front projection systems and helps to free up space.

3000 - 3500 ANSI Lumen

M Series



Professional Projectors

The award-winning projector range offers products for all needs, from portable devices via business projectors to products for permanent operation (such as PoS applications). Excellent brightness and attractive price/performance ratio.

2700 - 5000 ANSI Lumen

M Series

P Series



Installation Projectors

Projectors for multiple business applications – with excellent brightness and connectivity. Ideal for fixed installation purposes.

5200 - 13500 ANSI Lumen

PA Series

PH Series

PX Series



Ultra-Short-Throw Projectors

Projectors offering ultra-short throwing distance, 3D ready and low cost of ownership for corporate and educational applications in classrooms and (small) meeting rooms – ideal for interactive whiteboards.

3000 - 3600 ANSI Lumen

U Series

UM Series



L Series | Mobile

V Series | Mobile

| | L102W LED | V230X | V260 | V302H | V332W | V302W | V332X | V302X |
|--|--|---|--------------------------------|--------------------------------|--|--------------------------------|--------------------------------|--------------------------------|
| Order Code | 60003452 | 60003177 | 60003176 | 60003897 | 60003896 | 60003895 | 60003894 | 60003893 |
| Projection Technology | DLP™ | DLP™ | DLP™ | DLP™ | DLP™ | DLP™ | DLP™ | DLP™ |
| Aspect Ratio | 16:10 | 4:3 | 4:3 | 16:9 | 16:10 | 16:10 | 4:3 | 4:3 |
| Native Resolution | 1280 x 800 (WXGA) | 1024 x 768 (XGA) | 800 x 600 (SVGA) | 1920 x 1080 (Full HD) | 1280 x 800 (WXGA) | 1280 x 800 (WXGA) | 1024 x 768 (XGA) | 1024 x 768 (XGA) |
| Brightness [ANSI Lumen] | 1000 | 2300 | 2600 | 3000 | 3300 | 3000 | 3300 | 3000 |
| Contrast Ratio | 10000:1 | 2000:1 | 2000:1 | 8000:1 | 10000:1 | 10000:1 | 10000:1 | 10000:1 |
| Projection Factor | 1.4:1 | 1.95 – 2.15:1 | 1.95 – 2.15:1 | 1.50 - 1.80:1 | 1.55 - 1.70:1 | 1.55 - 1.70:1 | 1.95 - 2.15:1 | 1.95 - 2.15:1 |
| Projection Distance [m] | 0.52 – 3 | 1.2 – 13 | 1.2 – 13 | 1.3 - 12 | 1 - 11 | 1 - 11 | 1.2 – 13 | 1.2 – 13 |
| Projection Angle [°] | 13.8 | 12.8 - 14.0 | 12.8 - 14.0 | 11.7 - 14.0 | 13 - 14.2 | 13 - 14.2 | 12.8 - 14.0 | 12.8 - 14.0 |
| Screen Size (cm / inch) | min: 43.2 / 17 max: 254 / 100 | min: 76 / 30 max: 762 / 300 | min: 76 / 30 max: 762 / 300 | min: 76 / 30 max: 762 / 300 | min: 76 / 30 max: 762 / 300 | min: 76 / 30 max: 762 / 300 | min: 76 / 30 max: 762 / 300 | min: 76 / 30 max: 762 / 300 |
| Zoom / Focus | Digital / Manual | Manual / Manual | Manual / Manual | Manual / Manual | Manual / Manual | Manual / Manual | Manual / Manual | Manual / Manual |
| Connectivity | HDMI, SD Card, RGB in, optional WLAN, USB A, Mini-USB, Video, Audio In/Out | RGB: In/Out, PC Control, Video, S-Video, Audio In | | | 2 HDMI, RGB: In/Out, Video, LAN, PC Control, USB B, Audio: 3 In, 1 Out | | | |
| Power Use [W AC] High Bright / Normal / Power-Saving | 107 / 84 / 0.5 | 233 / 210 / 0.8 | 233 / 210 / 0.8 | 266 / 207 / 0.5 | 263 / 204 / 0.5 | 237 / 194 / 0.5 | 263 / 204 / 0.5 | 237 / 198 / 0.5 |
| Lamp Life Normal / ECO [hrs.] | LED Light Source | 3500 / 5000 | 3500 / 5000 | 3500 / 6000 | 3500 / 6000 | 4500 / 6000 | 3500 / 6000 | 4500 / 6000 |
| Dimensions (W x H x D) [mm] | 238 x 44 x 177 | 310 x 95 x 247 | 310 x 95 x 247 | 324 x 101 x 250 | 324 x 101 x 250 | 324 x 101 x 250 | 324 x 101 x 250 | 324 x 101 x 250 |
| Weight [kg] | 1.36 | 2.5 | 2.5 | 2.9 | 2.8 | 2.7 | 2.8 | 2.7 |
| Speakers (mono) [W] | 1 x 2 | 1 x 7 | 1 x 7 | 1 x 8 | 1 x 8 | 1 x 8 | 1 x 8 | 1 x 8 |
| TCO | • | • | - | - | - | - | - | - |
| Education Warranty Available | - | - | - | • | • | • | • | • |
| NaViSet Administrator 2 | • | • | • | • | • | • | • | • |

M Series | Desktop

| | M271X | M311X | M311W | M322H | M323X | M323W | M363X |
|--|--|--|--|---|---|---|---|
| Order Code | 60003404 | 60003405 | 60003407 | 60003888 | 60003973 | 60003972 | 60003980 |
| Projection Technology | 3LCD | 3LCD | 3LCD | DLP™ | DLP™ | DLP™ | DLP™ |
| Aspect Ratio | 4:3 | 4:3 | 16:10 | 16:9 | 4:3 | 16:10 | 4:3 |
| Native Resolution | 1024 x 768 (XGA) | 1024 x 768 (XGA) | 1280 x 800 (WXGA) | 1920 x 1080 (Full HD) | 1024 x 768 (XGA) | 1280 x 800 (WXGA) | 1024 x 768 (XGA) |
| Brightness [ANSI Lumen] | 2700 | 3100 | 3100 | 3200 | 3200 | 3200 | 3600 |
| Contrast Ratio | 3000:1 | 3000:1 | 3000:1 | 8000:1 | 10000:1 | 10000:1 | 10000:1 |
| Projection Factor | 1.3 – 2.2:1 | 1.3 – 2.2:1 | 1.3 – 2.2:1 | 1.2 – 2.1:1 | 1.5 – 2.5:1 | 1.2 – 2.04:1 | 1.5 – 2.5:1 |
| Projection Distance [m] | 0.6 – 13.8 | 0.6 – 13.8 | 0.7 – 14.7 | 0.74 – 14.08 | 0.89 - 15.93 | 0.75 - 13.49 | 0.89 - 15.93 |
| Projection Angle [°] | 6.5 – 11.4 | 6.5 – 11.4 | 6.5 – 11.4 | 9.9 - 17.9 | 10.5 - 17.6 | 10.5 - 17.6 | 10.5 - 17.6 |
| Screen Size (cm / inch) | min: 63.5 / 25 max: 762 / 300 | min: 63.5 / 25 max: 762 / 300 | min: 63.5 / 25 max: 762 / 300 | min: 76.2 / 30 max: 762 / 300 | min: 76.2 / 30 max: 762 / 300 | min: 76.2 / 30 max: 762 / 300 | min: 76.2 / 30 max: 762 / 300 |
| Zoom / Focus | Manual / Manual | Manual / Manual | Manual / Manual | Manual / Manual | Manual / Manual | Manual / Manual | Manual / Manual |
| Connectivity | HDMI, RGB: 2 In, 1 Out, Video, S-Video, 2 LAN, optional WLAN, USB A, USB B, PC Control, Audio: 3 In, 1 Out | HDMI, RGB: 2 In, 1 Out, Video, S-Video, LAN, optional WLAN, 2 USB A, USB B, PC Control, Audio: 2 In, 1 Out, Micro In | HDMI, RGB: 2 In, 1 Out, Video, S-Video, LAN, optional WLAN, 2 USB A, USB B, PC Control, Audio: 2 In, 1 Out, Micro In | 2 HDMI, RGB: In/Out, Video, LAN, optional WLAN, USB A, USB B, PC Control, Audio: 2 In, 1 Out, Micro In, 3D Sync | 2 HDMI, RGB: In/Out, Video, LAN, optional WLAN, USB A, USB B, PC Control, Audio: 2 In, 1 Out, Micro In, 3D Sync | 2 HDMI, RGB: In/Out, Video, LAN, optional WLAN, USB A, USB B, PC Control, Audio: 2 In, 1 Out, Micro In, 3D Sync | 2 HDMI, RGB: In/Out, Video, LAN, optional WLAN, USB A, USB B, PC Control, Audio: 2 In, 1 Out, Micro In, 3D Sync |
| Power [W AC] Hi-Bright / Normal / ECO / Power-Saving | 239 / 193 / 172 / 0.4 | 239 / 193 / 172 / 0.4 | 302 / 236 / 211 / 0.4 | 335 / 278 / 246 / 0.4 | 283 / 218 / 186 / 0.4 | 283 / 218 / 186 / 0.4 | 316 / 240 / 205 / 0.4 |
| Lamp Life Normal / ECO [hrs.] | 6000 / 10000 | 6000 / 10000 | 5000 / 8000 | 5000 / 8000 | 5500 / 8000 | 5500 / 8000 | 5000 / 8000 |
| Dimensions (W x H x D) [mm] | 339 x 99 x 257 | 339 x 99 x 257 | 339 x 99 x 257 | 367 x 107 x 291 | 367 x 107 x 291 | 367 x 107 x 291 | 367 x 97 x 285 |
| Weight [kg] | 2.99 | 2.99 | 2.99 | 3.7 | 3.4 | 3.4 | 3.5 |
| Speakers [W] | 1 x 10 | 1 x 10 | 1 x 10 | 1 x 20 | 1 x 20 | 1 x 20 | 1 x 20 |
| TCO | - | - | • | - | - | - | • |
| Education Warranty Available | • | • | • | • | • | • | • |

M Series | Desktop

M Series | Short Throw

| | M363W | M403X | M403W | M403H | M302WS | M333XS | M353WS |
|--|---|---|---|---|---|---|---|
| Order Code | 60003976 | 60003979 | 60003978 | 60003977 | 60003578 | 60003580 | 60003975 |
| Projection Technology | DLP™ | DLP™ | DLP™ | DLP™ | DLP™ | DLP™ | DLP™ |
| Aspect Ratio | 16:10 | 4:3 | 16:10 | 16:9 | 16:10 | 4:3 | 16:10 |
| Native Resolution | 1280 x 800 (WXGA) | 1024 x 768 (XGA) | 1280 x 800 (WXGA) | 1920 x 1080 (Full HD) | 1280 x 800 (WXGA) | 1024 x 768 (XGA) | 1280 x 800 (WXGA) |
| Brightness [ANSI Lumen] | 3600 | 4000 | 4000 | 4000 | 3000 | 3300 | 3500 |
| Contrast Ratio | 10000:1 | 10000:1 | 10000:1 | 10000:1 | 10000:1 | 10000:1 | 10000:1 |
| Projection Factor | 1.2 – 2.04:1 | 1.5 – 2.5:1 | 1.2 – 2.04:1 | 1.2 – 2.1:1 | 0.45:1 | 0.56:1 | 0.45:1 |
| Projection Distance [m] | 0.76 – 13.53 | 0.89 - 15.93 | 0.75 - 13.49 | 0.74 – 14.08 | 0.56 – 1.48 | 0.68 – 1.76 | 0.57 – 1.48 |
| Projection Angle [°] | 10.5 - 17.6 | 10.5 - 17.6 | 10.5 - 17.6 | 9.9 - 17.9 | 40.7 - 40.9 | 40.7 - 40.8 | 40.7 - 40.9 |
| Screen Size (cm / inch) | min: 76.2 / 30 max: 762 / 300 | min: 76.2 / 30 max: 762 / 300 | min: 76.2 / 30 max: 762 / 300 | | min: 152.4 / 60 max: 38.1 / 150 | min: 152.4 / 60 max: 38.1 / 150 | min: 152.4 / 60 max: 38.1 / 150 |
| Zoom / Focus | Manual / Manual | Manual / Manual | Manual / Manual | | Digital / Manual | Digital / Manual | Digital / Manual |
| Connectivity | 2 HDMI, RGB: In/Out, Video, LAN, optional WLAN, USB A, USB B, PC Control, Audio: 2 In, 1 Out, Micro In, 3D Sync | 2 HDMI, RGB: In/Out, Video, LAN, optional WLAN, USB A, USB B, PC Control, Audio: 2 In, 1 Out, Micro In, 3D Sync | 2 HDMI, RGB: In/Out, Video, LAN, optional WLAN, USB A, USB B, PC Control, Audio: 2 In, 1 Out, Micro In, 3D Sync | 2 HDMI, RGB: In/Out, Video, LAN, optional WLAN, USB A, USB B, PC Control, Audio: 2 In, 1 Out, Micro In, 3D Sync | 2 HDMI, RGB: In/Out, Video, LAN, optional WLAN, USB A, USB B, PC Control, Audio: 2 In, 1 Out, Micro In, 3D Sync | 2 HDMI, RGB: In/Out, Video, LAN, optional WLAN, USB A, USB B, PC Control, Audio: 2 In, 1 Out, Micro In, 3D Sync | 2 HDMI, RGB: In/Out, Video, LAN, optional WLAN, USB A, USB B, PC Control, Audio: 2 In, 1 Out, Micro In, 3D Sync |
| Power [W AC] Hi-Bright / Normal / ECO / Power-Saving | 316 / 240 / 205 / 0.4 | 338 / 276 / 221 / 0.4 | 338 / 276 / 221 / 0.4 | 338 / 276 / 221 / 0.4 | 286 / 224 / 202 / 0.4 | 338 / 276 / 221 | 335 / 278 / 246 / 0.4 |
| Lamp Life Normal / ECO [hrs.] | 5000 / 8000 | 5000 / 8000 | 5000 / 8000 | 5000 / 8000 | 5500 / 8000 | 5500 / 8000 | 5500 / 8000 |
| Dimensions (W x H x D) [mm] | 367x 97 x 285 | 367 x 97 x 285 | 367 x 97 x 285 | 367 x 97 x 285 | 368 x 97 x 286 | 367 / 133 / 291 | 367 / 133 / 291 |
| Weight [kg] | 3.5 | 3.5 | 3.5 | 3.7 | 3.6 | 3.7 | 3.6 |
| Speakers [W] | 1 x 20 | 1 x 20 | 1 x 20 | 1 x 20 | 1 x 20 | 1 x 20 | 1 x 20 |
| Education Warranty Available | • | • | • | • | • | • | • |

U | UM | UMI Series | Ultra-Short-Throw

| | U321H | U321Hi-MT | U321Hi-MP | UM351W | UM-351Wi-MT | UM-351Wi-MP | UM-352Wi-MT | UM-352Wi-MP |
|--|--|--|--|---|-------------------------------------|-------------------------------------|---|-------------------------------------|
| Order Code | 60003952 | 60003945 | 60003944 | 60003842 | 60003941 | 60003910 | 60003955 | 60003889 |
| Projection Technology | DLP™ | DLP™ | DLP™ | 3LCD | 3LCD | 3LCD | 3LCD | 3LCD |
| Aspect Ratio | 16:9 | 16:9 | 16:9 | 16:10 | 16:10 | 16:10 | 16:10 | 16:10 |
| Native Resolution | 1920 x 1080 (Full-HD) | 1920 x 1080 (Full-HD) | 1920 x 1080 (Full-HD) | 1280 x 800 (WXGA) | 1280 x 800 (WXGA) | 1280 x 800 (WXGA) | 1280 x 800 (WXGA) | 1280 x 800 (WXGA) |
| Brightness [ANSI Lumen] | 3200 | 3200 | 3200 | 3500 | 3500 | 3500 | 3500 | 3500 |
| Contrast Ratio | 10000:1 | 10000:1 | 10000:1 | 6000:1 | 6000:1 | 6000:1 | 6000:1 | 6000:1 |
| Projection Factor | 0.25:1 | 0.25:1 | 0.25:1 | 0.36:1 | 0.36:1 | 0.36:1 | 0.36:1 | 0.36:1 |
| Projection Distance [m] | 0.195 - 0.306 | 0.195 - 0.306 | 0.195 - 0.306 | 0.11 - 0.51 | 0.11 - 0.51 | 0.11 - 0.51 | 0.11 - 0.51 | 0.11 - 0.51 |
| Projection Angle [°] | 57 | 57 | 57 | 49.2 | 49.2 | 49.2 | 49.2 | 49.2 |
| Screen Size (cm / inch) | min.: 216 / 85 max.: 254 / 100 | min.: 216 / 85 max.: 254 / 100 | min.: 216 / 85 max.: 254 / 100 | min.: 147.3 / 58 max.: 279 / 110 | min.: 147.3 / 58 max.: 279 / 110 | min.: 147.3 / 58 max.: 279 / 110 | min.: 147.3 / 58 max.: 279 / 110 | min.: 147.3 / 58 max.: 279 / 110 |
| Zoom / Focus | Digital / Manual | Digital / Manual | Digital / Manual | Digital / Manual | Digital / Manual | Digital / Manual | Digital / Manual | Digital / Manual |
| Connectivity | HDMI, RGB In, Video, USB B, PC Control | HDMI, RGB In, Video, USB B, PC Control | HDMI, RGB In, Video, USB B, PC Control | 2 HDMI, RGB In/Out, Video, LAN, optional WLAN, PC Control, 2 USB A, USB B Audio 3 In, 1 Out, Micro In | | | 2 HDMI, RGB In/Out, Video, LAN, optional WLAN, PC Control, 2 USB A, USB B Audio 3 In, 1 Out, Micro In | |
| Power [W AC] Hi-Bright / Normal / ECO / Power-Saving | - / 312 / 264 / 0.5 | - / 312 / 264 / 0.5 | - / 312 / 264 / 0.5 | 324 / 257 / 214 / 0.5 | 324 / 257 / 214 / 0.5 | 324 / 257 / 214 / 0.5 | 326 / 261 / 216 / 0.5 | 326 / 261 / 216 / 0.5 |
| Lamp Life Normal / ECO [hrs.] | 3000 / 4000 | 3000 / 4000 | 3000 / 4000 | 5000 / 6000 | 5000 / 6000 | 5000 / 6000 | 5000 / 6000 | 5000 / 6000 |
| Dimensions (W x H x D) [mm] | 383 x 85 x 308 | 383 x 85 x 308 | 383 x 85 x 308 | 378 x 112 x 428 | 378 x 112 x 428 | 378 x 112 x 428 | 378 x 112 x 428 | 378 x 112 x 428 |
| Weight [kg] | 4.7 | 4.7 | 4.7 | 5.6 | 5.6 | 5.6 | 5.6 | 5.6 |
| Speakers [W] | 1 x 8 | 1 x 8 | 1 x 8 | 1 x 20 | 1 x 20 | 1 x 20 | 1 x 20 | 1 x 20 |
| Education Warranty Available | ● | ● | ● | ● | ● | ● | ● | ● |
| Multi-Touch | - | ● | - | - | ● | - | ● | - |
| Multi-Pen | - | - | ● | - | - | ● | - | ● |

UM | UMI Series | Ultra-Short-Throw

| | UM301W | UM301Wi-MT | UM301Wi-MP | UM361X | UM361Xi-MP | UM301X | UM301Xi-MP |
|--|--|-----------------------------------|-----------------------------------|---|---|---|---|
| Order Code | 60003840 | 60003940 | 60003908 | 60003843 | 60003911 | 60003841 | 60003909 |
| Projection Technology | 3LCD | 3LCD | 3LCD | 3LCD | 3LCD | 3LCD | 3LCD |
| Aspect Ratio | 16:10 | 16:10 | 16:10 | 4:3 | 4:3 | 4:3 | 4:3 |
| Native Resolution | 1280 x 800 (WXGA) | 1280 x 800 (WXGA) | 1280 x 800 (WXGA) | 1024 x 768 (XGA) | 1024 x 768 (XGA) | 1024 x 768 (XGA) | 1024 x 768 (XGA) |
| Brightness [ANSI Lumen] | 3000 | 3000 | 3000 | 3600 | 3600 | 3000 | 3000 |
| Contrast Ratio | 6000:1 | 6000:1 | 6000:1 | 6000:1 | 6000:1 | 6000:1 | 6000:1 |
| Projection Factor | 0.36:1 | 0.36:1 | 0.36:1 | 0.36:1 | 0.36:1 | 0.36:1 | 0.36:1 |
| Projection Distance [m] | 0.11 - 0.51 | 0.11 - 0.51 | 0.11 - 0.51 | 0.11 - 0.51 | 0.11 - 0.51 | 0.11 - 0.51 | 0.11 - 0.51 |
| Projection Angle [°] | 49.2 | 49.2 | 49.2 | 53.1 | 53.1 | 53.1 | 53.1 |
| Screen Size (cm / inch) | min: 147.5 / 58 max: 279 / 110 | min: 147.5 / 58 max: 279 / 110 | min: 147.5 / 58 max: 279 / 110 | min: 156.2 / 61.5 max: 296.2 / 116.6 | min: 156.2 / 61.5 max: 296.2 / 116.6 | min: 156.2 / 61.5 max: 296.2 / 116.6 | min: 156.2 / 61.5 max: 296.2 / 116.6 |
| Zoom / Focus | Digital / Manual | Digital / Manual | Digital / Manual | Digital / Manual | Digital / Manual | Digital / Manual | Digital / Manual |
| Connectivity | 2 HDMI, RGB In/Out, Video, LAN, optional WLAN, 3 USB A, PC Control, Audio: 2 In, 1 Out, Micro In | | | | | | |
| Power [W AC] Hi-Bright / Normal / ECO / Power-Saving | 285 / 227 / 190 / 0.5 | 285 / 227 / 190 / 0.5 | 285 / 227 / 190 / 0.5 | 324 / 257 / 214 / 0.5 | 324 / 257 / 214 / 0.5 | 285 / 227 / 190 / 0.5 | 285 / 227 / 190 / 0.5 |
| Lamp Life Normal / ECO [hrs.] | 5000 / 8000 | 5000 / 8000 | 5000 / 8000 | 5000 / 6000 | 5000 / 6000 | 5000 / 8000 | 5000 / 8000 |
| Dimensions (W x H x D) [mm] | 378 x 112 x 428 | 378 x 112 x 428 | 378 x 112 x 428 | 378 x 112 x 428 | 378 x 112 x 428 | 378 x 112 x 428 | 378 x 112 x 428 |
| Weight [kg] | 5.5 | 5.5 | 5.5 | 5.6 | 5.6 | 5.5 | 5.5 |
| Speakers [W] | 1 x 20 | 1 x 20 | 1 x 20 | 1 x 20 | 1 x 20 | 1 x 20 | 1 x 20 |
| Education Warranty Available | ● | ● | ● | ● | ● | ● | ● |
| Multi-Touch | - | ● | - | - | - | - | - |
| Multi-Pen | - | - | ● | - | ● | - | ● |

P Series | Professional

| | P451W | P501X | P502H | P502W | P502HL |
|--|---|----------------------------------|--|----------------------------------|----------------------------------|
| Order Code | 60003449 | 60003450 | 60003901 | 60003900 | 60003694 |
| Projection Technology | 3LCD | 3LCD | DLP™ | DLP™ | DLP™ |
| Aspect Ratio | 16:10 | 4:3 | 16:9 | 16:10 | 16:9 |
| Native Resolution | 1280 x 800 (WXGA) | 1024 x 768 (XGA) | 1280 x 800 (WXGA) | 1920 x 1080 | 1920 x 1080 |
| Brightness [ANSI Lumen] | 4500 | 5000 | 5000 | 5000 | 5000 |
| Brightness in ECO Mode [approx. %] | 80 | 80 | 80 | 80 | 80* |
| Contrast Ratio | 4000:1 | 4000:1 | 6000:1 | 6000:1 | 15000:1 |
| Lens [mm] | F= 1.7 – 2.2, f= 17.4 – 29.0 | F= 1.7 – 2.2, f= 17.4 – 29.0 | F= 2.0-2.5, f= 18.2 - 31.1 | F= 2.0-2.5, f= 18.2 - 31.1 | F= 2.0-2.5, f= 18.2 - 31.1 |
| Lens: optional bayonet lenses | No optional lens | No optional lens | No optional lens | No optional lens | No optional lens |
| Projection Factor (std. option) | 1.3 – 2.2:1 | 1.3 – 2.2:1 | 1.24 – 2.11 : 1 | 1.3 – 2.21 : 1 | 1.24 - 2.1:1 |
| Projection Distance [m] | 0.7 – 14.6 | 0.6 – 13.8 | 0.8 - 14.5 | 0.8 - 14.5 | 0.8 - 14.2 |
| Screen Size (cm / inch) | min.: 64 / 25 max.: 762 / 300 | min.: 64 / 25 max.: 762 / 300 | min.: 76 / 30 max.: 762 / 300 | min.: 76 / 30 max.: 762 / 300 | min.: 76 / 30 max.: 762 / 300 |
| Lens Adjustment | Manual | Manual | Manual | Manual | Manual |
| Connectivity | 2 HDMI, RGB In/Out, S-Video, PC Control, RCA In, 2 USB A, USB B, LAN, optional WLAN, Audio: 2 In, 1 Out, Micro In | | 2 HDMI, HDBaseT, RGB In/Out, PC Control, RCA In, 2 USB A, USB B, HDBA, LAN, optional WLAN, Audio: 2 In, 1 Out, 3D Sync | | |
| Power [W AC] Standard / ECO / Power-Saving | 292 / 231 / 0.4 | 292 / 231 / 0.4 | 305 / 366 / 445 | 305 / 366 / 445 | 442 / 347 / 0.3 |
| Lamp Power: Normal / ECO [W / UHP AC] | 270 / 163 | 270 / 163 | 375 / - | 375 / - | Laser Light Source |
| Lamp Life: Hi Br / Normal / ECO [hrs.] | 3500 / 4000 / 6000 | 3500 / 4000 / 6000 | 5000 / 4000 / 3000 | 5000 / 4000 / 3000 | 20000 |
| Dimensions (W x H x D) [mm] | 398 x 115 x 282 | 398 x 115 x 282 | 362 / 129 / 302 | 362 / 129 / 302 | 469 x 137 x 365 |
| Weight [kg] | 4.1 | 4.1 | 5.2 | 5.2 | 8.8 |
| Speakers [W] | 1 x 16 | 1 x 16 | 1 x 20 | 1 x 20 | 1 x 20 |
| Education Warranty Available | • | • | - | - | - |

PA Series | Professional Advanced

| | PA621U | PA671W | PA622U | PA522U | PA672W | PA572W | PA722X |
|--|--|----------------------------------|----------------------------------|--|----------------------------------|--|----------------------------------|
| Order Code | 60003661 | 60003660 | 60003444 | 60003640 | 60003445 | 60003641 | 60003446 |
| Projection Technology | 3LCD | 3LCD | 3LCD | 3LCD | 3LCD | 3LCD | 3LCD |
| Aspect Ratio | 16:10 | 16:10 | 16:10 | 16:10 | 16:10 | 16:10 | 4:3 |
| Native Resolution | 1920 x 1200 (WUXGA) | 1280 x 800 (WXGA) | 1920 x 1200 (WUXGA) | 1920 x 1200 (WUXGA) | 1280 x 800 (WXGA) | 1280 x 800 (WXGA) | 1024 x 768 (XGA) |
| Brightness [ANSI Lumen] | 6200 | 6700 | 6200 | 5200 | 6700 | 5700 | 7200 |
| Brightness in ECO Mode [approx. %] | 80 | 80 | 80 | 80 | 80 | 80 | 80 |
| Contrast Ratio | 6000:1 | 6000:1 | 6000:1 | 5000:1 | 6000:1 | 5000:1 | 5000:1 |
| Lens [mm] | optional | optional | optional | optional | optional | optional | optional |
| Lens: optional bayonet lenses | 6 | 6 | 6 | 6 | 6 | 6 | 6 |
| Projection Factor (std. option) | 1.5-3.02:1 (NP13ZL) | 1.5-3.02:1 (NP13ZL) | 1.5-3.02:1 (NP13ZL) | 1.5-3.02:1 (NP13ZL) | 1.5-3.02:1 (NP13ZL) | 1.5-3.02:1 (NP13ZL) | 1.5-3.02:1 (NP13ZL) |
| Projection Distance [m] | 0.7 (NP11FL) 76.4 (NP15ZL) | | 0.7 (NP11FL) 76.4 (NP15ZL) | | | 0.7 (NP11FL) 76.4 (NP15ZL) | |
| Screen Size (cm / inch) | min.: 76 / 30 max.: 762 / 300 | min.: 76 / 30 max.: 762 / 300 | min.: 76 / 30 max.: 762 / 300 | min.: 76 / 30 max.: 762 / 300 | min.: 76 / 30 max.: 762 / 300 | min.: 76 / 30 max.: 762 / 300 | min.: 76 / 30 max.: 762 / 300 |
| Lens Adjustment | Manual | Manual | Manual | Manual | Manual | Manual | Manual |
| Connectivity | HDMI: 2 In, 1 Out, DP, RGB In, 5BNC (incl. Video / S-Video), LAN, optional WLAN, USB A, PC Control, Audio: 5 In, 1 Out, 3D Sync Out, Remote In | | | HDMI: 2 In, 1 Out, DP, RGB In, 5BNC (incl. Video / S-Video), LAN, optional WLAN, USB A, PC Control, Audio: 5 In, 1 Out, 3D Sync Out, Remote In | | HDMI: 2 In, 1 Out, DP, RGB In, 5BNC (incl. Video / S-Video), LAN, optional WLAN, PC Control, USB A, Audio: 6 In, 1 Out, 3D Sync, Remote In | |
| Power [W AC] Standard / ECO / Power-Saving | 460 / 362 / 0.16 | 460 / 362 / 0.16 | 460 / 362 / 0.16 | 460 / 362 / 0.16 | 460 / 362 / 0.16 | 460 / 362 / 0.16 | 460 / 362 / 0.16 |
| Lamp Power: Normal / ECO [W / UHP AC] | 350 / 264 | 350 / 264 | 350 / 264 | 330 / 264 | 350 / 264 | 330 / 264 | 350 / 264 |
| Lamp Life: Hi Br / Normal / ECO [hrs.] | - / 3000 / 4000 | - / 3000 / 4000 | - / 3000 / 4000 | - / 3000 / 4000 | - / 3000 / 4000 | - / 3000 / 4000 | - / 3000 / 4000 |
| Dimensions (W x H x D) [mm] | 499 x 142 x 359 | 499 x 142 x 359 | 499 x 142 x 359 | 499 x 142 x 359 | 499 x 142 x 359 | 499 x 142 x 359 | 499 x 142 x 359 |
| Weight [kg] | 8.4 | 8.4 | 8.4 | 8.4 | 8.4 | 8.4 | 8.4 |
| Speakers [W] | 1 x 10 | 1 x 10 | 1 x 10 | 1 x 10 | 1 x 10 | 1 x 10 | 1 x 10 |
| Education Warranty Available | - | - | - | - | - | - | - |

* Brightness in Normal Mode [approx. %]

| | PX700W | PX750U | PX800X | PX803UL | PX602UL | PX602WL | PH1400U | PH1201QL | PH1202HL |
|--|--|--|--|---|---|---|---|------------------------------------|---|
| Order Code | 60003828 | 60003829 | 60003830 | 60004004 (BK), 60004010 (WH) | 60003795 (BK), 60003695 (WH) | 60003794 (BK), 60003696 (WH) | 60003442 | 60003698 | 60003902 |
| Projection Technology | DLP™ | DLP™ | DLP™ | DLP™ | DLP™ | DLP™ | 3-chip DLP™ Technology | DC4K Chip - DLP™ Technology | 3-chip DLP™ Technology |
| Aspect Ratio | 16:10 | 16:10 | 4:3 | 16:10 | 16:10 | 16:10 | 16:10 | 19:10 | 16:10 |
| Native Resolution | 1280 x 800 (WXGA) | 1920 x 1200 (WUXGA) | 1024 x 768 (XGA) | 1920x1200 (WUXGA) | 1920x1200 (WUXGA) | 1280 x 800 (WXGA) | 1920 x 1200 (WUXGA) | 4096 x 2160 (4K) | 1920 x 1080 (1080p) |
| Brightness [ANSI Lumen] | 7000 | 7500 | 8000 | 8000 | 6000 | 6000 | 13500 | 12000 | 12000 |
| Brightness in ECO Mode [approx. %] | 80 | 80 | 80 | 80 | 80 | 80 | 75 | 85 | 75 |
| Contrast Ratio (DB™ = with DynamicBlack™) | 2100:1 DB™ | 2100:1 DB™ | 2100:1 DB™ | 10000:1 | 10000:1 | 10000:1 | 2000:1 | 2000:1 | 10000:1 |
| Lens [mm] | optional | optional | optional | optional | optional | optional | optional | optional | optional |
| Lens: optional bayonet lenses (LM = with lens memory) | 7 (6 with LM) | 7 (6 with LM) | 7 (6 with LM) | 8 (6 with LM) | 5 | 5 | 7 (6 with LM) | 9 with LM | 6 with LM |
| Projection Factor (std. option) | 0.76:1 & 1.25 - 8.3:1 | 0.76:1 & 1.25 - 8.3:1 | 0.76:1 & 1.25 - 8.3:1 | depending on lens selection | 0.75:1 - 5.50:1 | 0.79:1 - 5.78:1 | 0.67:1 & 0.9 - 6.96:1 | 0.9:1 & 1.13:1 - 7.4:1 | 0.9:1 - 6.76:1 |
| Projection Distance [m] | 0.8 (NP16FL) 54 (NP21ZL) | 0.8 (NP16FL) 54 (NP21ZL) | 0.8 (NP16FL) 54 (NP21ZL) | 0.8 (NP16FL) 54 (NP21ZL) | 1.02 – 19.39 | 1.02 – 19.39 | 1.1 (NP25FL) 74 (NP29ZL) | depending on lens selection | depending on lens selection |
| Screen Size (cm / inch) | min.: 127 / 50 max.: 762 / 300 | min.: 127 / 50 max.: 762 / 300 | min.: 127 / 50 max.: 762 / 300 | min.: 127 / 50 max.: 760 / 300 | min.: 127 / 50 max.: 762 / 300 | min.: 127 / 50 max.: 762 / 300 | min.: 203 / 80 max.: 1720 / 500 | min.: 203 / 80 max.: 1720 / 500 | min.: 152 / 60 max.: 1524 / 600 |
| Lens Adjustment | Motorised | Motorised | Motorised | Motorised | Motorised | Motorised | Motorised | Motorised | Motorised |
| Connectivity | HDMI, DP, RGB: 3 In, 1 Out, S-Video, LAN, optional WLAN, 2 USB A, PC Control, OPS Slot, Remote in | HDMI, DP, RGB: 3 In, 1 Out, S-Video, LAN, optional WLAN, 2 USB A, PC Control, OPS Slot, Remote in | HDMI, DP, RGB: 3 In, 1 Out, S-Video, LAN, optional WLAN, 2 USB A, PC Control, OPS Slot, Remote in | HDMI In/Out, DP, RGB In, 5BNC (incl. Video / S-Video), LAN, optional WLAN, USB A, PC Control, Audio: 5 In, 1 Out, 3D Sync Out, Remote In | HDMI In/Out, DP, RGB In, 5BNC (incl. Video / S-Video), LAN, optional WLAN, USB A, PC Control, Audio: 5 In, 1 Out, 3D Sync Out, Remote In | HDMI In/Out, DP, HDBaseT RGB: 2 In, S-Video, Video LAN, USB A, PC Control, OPS Slot, Remote In | HDMI, DP, RGB: 3 In, 1 Out, S-Video, LAN, optional WLAN, 2 USB A, PC Control, OPS Slot, 3D Sync Out/In, 3D DVI In, Remote in | 2 HDMI, 2 DVI-D, 4 3G-SDi | HDMI In/Out, DP, HDBaseT, 2 RGB In, Video, S-Video, LAN, USB A, PC Control, 3D Sync Out, OPS slot |
| Power [W AC] Standard / ECO / Power-Saving | 494 / 405 / 0.4 | 515 / 429 / 0.4 | 489 / 404 / 0.4 | 850 / 446 / 0.27 | 550 / 270 / <0.5 | 550 / 270 / <0.5 | 705 / 585 / 0.5 | 1600 / - / - | 1392 / 752 / 0.5 |
| Lamp Power: Normal /ECO [W / UHP AC] | 2 x 400 / 2 x 320 | 2 x 400 / 2 x 320 | 2 x 400 / 2 x 320 | Laser Light Source | Laser Light Source | Laser Light Source | 2 x 465 / 2 x 365 | Laser Light Source | |
| Lamp Life: Hi Br / Normal / ECO [hrs.] | - / 2000 / 2500 | - / 2000 / 2500 | - / 2000 / 2500 | 20000 | 20000 | 20000 | - / 2500 / 3000 | 20000 | - / 20000 / 30000 |
| Dimensions (W x H x D) [mm] | 504 x 192 x 516 | 504 x 192 x 516 | 504 x 192 x 516 | 500 x 205 x 580 | 484 x 195 x 509 | 484 x 195 x 509 | 558 x 235 x 578 | 700 x 323 x 935 | 680 x 333 x 860 |
| Weight [kg] | 19.7 | 19.7 | 19.7 | 28 | 18.5 | 18.5 | 39 | 67.5 | 68 |

Upgrade Options

| Option Boards for PX & PH Series | | |
|----------------------------------|--------|------------|
| Slot Option | Format | Order Code |
| Celeron N2807 2 x 1.58 GHz | OPS | 100013752 |
| Celeron 2000E 2 x 2.2 GHz | OPS | 100013751 |
| Core i3 4100E 2 x 2.4 GHz | OPS | 100013808 |
| Core i5 4400E 2 x 2.7 GHz | OPS | 100013594 |
| Core i7 4700EQ 4 x 2.4 GHz | OPS | 100013595 |
| HD-SDI Internal 1.5G | OPS | 100012893 |
| HD-SDI Internal 3G | OPS | 100012947 |
| OPS Digital Signage Player | OPS | 100013538 |
| HDBaseT Receiver | OPS | 100013612 |
| HDBaseT Sender | ext. | 100013613 |



OPS SLOT-IN PC



OPS HD-SDI BOARD

Digital Cinema Projectors

The leading name in Digital Cinema projection, we present breath-taking, pin sharp images with precise colour reproduction in stunning 4K playback. Easy to operate, our Digital Cinema projectors offer the ideal solution for theatres and art houses.

NC Series

For more detailed information please visit:

www.digital-cinema-nec.com



Digital Cinema

| | NC900C | NC1200C | NC1201L | NC2000C | NC3200S | NC3240S | NC1040L | NC1440L | NC1100L |
|------------------------------|---|--|---|---|--|---|---|---|---|
| Order Code | 60003356 | 60002948 | 60003926 | 60002815 | 60002816 | 60003070 | 60003623 | 60003664 | 60003700 |
| DMD | DC Chip DLP Technology | | | | | | | | |
| Screen Sizes | up to 9.5 m | up to 14 m | up to 12 m | up to 20 m | up to 32 m | up to 32 m | up to 9.5 m | up to 14 m | up to 11 m |
| Light Source | 350 W x 2 NSH Lamps | max 2.0KW | Laser Light Source | max 4.0KW | max. 7.0KW | max. 7.0KW | External laser light source connected by fiber tube | External laser light source connected by fiber tube | Laser Light Source |
| Contrast Ratio (full on/off) | > 1800:1 | > 2200:1 | > 1650:1 | > 2200:1 | > 2200:1 | > 2200:1 | > 2000:1 | > 2000:1 | > 1750:1 |
| DMD Specifications | 2K, 0.69" DLP | 2K, 0.98" DLP | 2K, 0.69" DLP | 2K, 1.25" DLP | 2K, 1.25" DLP | 4K, 1.38" DLP | 4K, 1.38" DLP | 4K, 1.38" DLP | 2K, 0.69" DLP |
| Primary Lenses | 1.2 to 1.72:1 zoom; 1.33 to 2.1:1 zoom; 1.62 to 2.7:1 zoom; 2.09 to 3.9:1 zoom; 4.07 to 6.34:1 zoom | 1.2 to 1.8:1 zoom; 1.3 to 1.75:1 zoom; 1.4 to 2.05:1 zoom; 1.59 to 2.53:1 zoom; 1.9 to 3.25:1 zoom; 2.4 to 3.9:1 zoom; 3.9 to 6.5:1 zoom | 1.2 to 1.72:1 zoom; 1.33 to 2.1:1 zoom; 1.62 to 2.7:1 zoom; 2.09 to 3.9:1 zoom; 4.07 to 6.34:1 zoom | 1.2 to 1.8:1 zoom; 1.3 to 1.75:1 zoom; 1.4 to 2.05:1 zoom; 1.59 to 2.53:1 zoom; 1.9 to 3.25:1 zoom; 2.4 to 3.9:1 zoom; 3.9 to 6.52:1 zoom | 1.25 to 1.45:1 zoom; 1.44 to 2.05:1 zoom; 1.6 to 2.4:1 zoom; 1.8 to 3:1 zoom; 2.15 to 3.6:1 zoom; 3 to 4.3:1 zoom; 4.3 to 6:1 zoom | 1.13 to 1.66:1 zoom; 1.30 to 1.85:1 zoom; 1.44 to 2.16:1 zoom; 1.63 to 2.71:1 zoom; 1.95 to 3.26:1 zoom; 2.71 to 3.89:1 zoom | 1.13 to 1.66:1 zoom; 1.30 to 1.85:1 zoom; 1.44 to 2.16:1 zoom; 1.63 to 2.71:1 zoom; 1.95 to 3.26:1 zoom; 2.71 to 3.89:1 zoom | 1.13 to 1.66:1 zoom; 1.30 to 1.85:1 zoom; 1.44 to 2.16:1 zoom; 1.63 to 2.71:1 zoom; 1.95 to 3.26:1 zoom; 2.71 to 3.89:1 zoom | 1.2 to 1.72:1 zoom; 1.33 to 2.1:1 zoom; 1.62 to 2.7:1 zoom; 2.09 to 3.9:1 zoom |
| Dimension (W x H x D) [mm] | 621 x 314 x 798 | 700 x 503 x 990 | 680 x 333 x 860 | 700 x 503 x 990 | 700 x 503 x 1,124 | 700 x 503 x 1,124 | 737 x 364 x 1,042 | 737 x 364 x 1,042 | 737 x 364 x 1,042 |
| Cooling Method | No Air Duct | Liquid Cooling system with dust preventing electrostatic filter. Total thermal dissipation: 10,600 BTU. Projector exhaust: 10m ³ /min | No Air Duct | Liquid Cooling system with dust preventing electrostatic filter. Total thermal dissipation: 18,800 BTU. Demand of Exhaust Duct 13CMM | Liquid Cooling inside, air cooling with dust preventing electrostatic filter. Total thermal dissipation: 35,500 BTU. Demand of Exhaust Duct 16CMM | Liquid Cooling inside, air cooling with dust preventing electrostatic filter; No Air Duct | Liquid Cooling inside, air cooling with dust preventing electrostatic filter; No Air Duct | Liquid Cooling inside, air cooling with dust preventing electrostatic filter; No Air Duct | No Air Duct |



Professional Service

NEC ReTrade

Trade in your old projector when you trade-up to NEC

Make your next projector purchase an NEC and you could trade-in your old projector for cash and take comfort that you are doing your part in preserving resources and creating a sustainable environment.

For more detailed information please visit:
www.nec-display-solutions.com/retrade



NEC ServicePlus

A commitment to quality

NEC serviceplus takes that philosophy further for the entire sales cycle from pre-sales through to the replacement phase. We take the guessing out of installing and managing a Display Solution inventory over a standard or extended lifecycle. Our customers can concentrate on their business activities, confident that their IT infrastructure is underwritten by the serviceplus promise.

- 5 years warranty
- Ad hoc warranty extension
- 24/7 for selected displays and projectors
- De-/Re-install service

For more detailed information please visit:
www.nec-display-solutions.com / Choose support



NEC Green Vision

Green without compromise

With our 'Green Vision' Environmental Initiative, NEC strives to help to create a sustainable society friendly to humans and our planet.

Intuitive Eco Modes

One Click or Auto ECO Modes help you reduce your projector or display power use when it is not needed, allowing optimum brightness and maximum energy efficiency at all times.

AV Mute

Save 75% Lamp Power by simply sliding the projector cover across. When you slide it back the image instantly reappears.

Human and Ambient Light Sensors

The Human Sensor ensures your display is only working when you are, as it detects your presence at the desk, ambient light and luminance sensors also make intelligent adjustments to your displayed image to help to save power.

For more detailed information please visit:
www.green-vision-nec.com



Office Locations

NEC Display Solutions Europe GmbH – HQ

Landshuter Allee 12-14
80637 München, Germany
Phone: +49 (0) 89 99 699-0
Fax: +49 (0) 89 99 699-500
infomail@nec-displays.com
www.nec-display-solutions.com

NEC Display Solutions Europe GmbH Representative Office Austria

Mooslackengasse 17, 1190 Wien, Austria
Phone: +43(1)23060 3685
Fax: +43(1)23060 3686
infomail@nec-displays.com
www.nec-display-solutions.at

NEC Display Solutions Europe GmbH Representative Office Czech and Slovak

Tábor 44 A
602 00, Brno
Czech Republic
Phone: +420 733 396 861
www.nec-display-solutions.cz

NEC Scandinavia AB Display Solutions Division Finland

Ahventie 4, FIN-02170
ESPOO
Finland
Phone: +358 9 348 70204
www.nec-display-solutions.fi

NEC France S.A.S Display Solutions Division

29 rue des Hautes Pâtures
92737 Nanterre Cedex, France
Phone: +33 (0) 1 46 49 46 49
Fax: +33 (0) 1 47 69 92 86
www.nec-display-solutions.fr

NEC Italia Spa – Display Solutions Division

Viale Enrico Forlanini 23
20134 – Milano, Italy
Phone: +39.02.48415.1
Fax: +39.02.48414.409
info.necdisplay-it@emea.nec.com
www.nec-display-solutions.it

NEC Display Solutions Middle East & Africa

Office 0205, 2nd Floor JAFZA View 18, Jebel Ali
Dubai, U.A.E. PO Box 262314
Phone: +971 4 88 49 452
Fax: +971 4 88 49 453
info@nec-displays.ae
www.nec-display-solutions.com

NEC Scandinavia AB Display Solutions Division

Olaf Helsetsvai 5, NO-0621 Oslo
Norway
Phone: +47 (0) 22 62 89 95
Fax: +47 (0) 22 62 89 96
www.nec-display-solutions.no

NEC Display Solutions Europe GmbH Representative Office Poland

ul. Bociana 22A
31-231 Kraków, Poland
Phone: +48 (0) 12 614 53-53
Fax: +48 (0) 12 614 53-54
www.nec-display-solutions.pl

NEC Display Solutions Europe GmbH Representative Office Russia

Vavilov Str. 47a
117312 Moscow, Russia
Phone/Fax: +7 495 989 80 51
info@nec-displays-ru.com
www.nec-display-solutions.ru

NEC Display Solutions South Africa

P. O. Box 7243, Westwood, 1477
Johannesburg, South Africa
Phone: +27 (0) 11 918 6449
Fax: +27 (0) 11 894 2973
www.nec-display-solutions.co.za

NEC Iberica - Display Solutions Division

C/ Anabel Segura, 7 – Planta 2a
28108 Alcobendas (Madrid)
Spain
Phone: +34 (0) 91 203 29 00
Fax: +34 (0) 91 650 11 00
www.nec-display-solutions.es

NEC Scandinavia AB Display Solutions Division Sweden

Kronborgsgränd 1, S-16487 Kista
Sweden
Phone: +46 (0) 10 214 86 00
Fax: +46 (0) 8 635 93 50
www.nec-display-solutions.se

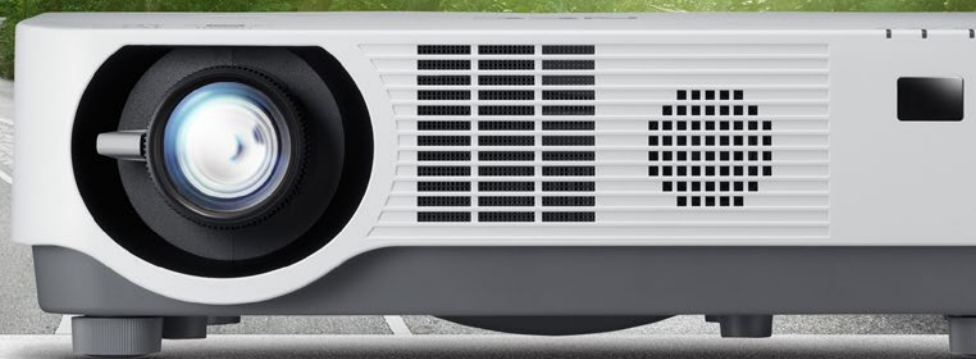
NEC UK Ltd. – Display Solutions Division

Athene Building, Odyssey Business Park
West End Road, South Ruislip, Middlesex
HA4 6QE
Phone: +44 (0) 20 8836 2000
Calls cost 5 pence per minute,
plus your phone company's access charge
Fax : +44 (0) 20 8836 2001
www.nec-display-solutions.co.uk

NEC P502HL

20,000 hrs Maintenance Free

Designed for the Long Haul



This document is © Copyright 2016 NEC Display Solutions Europe GmbH. All rights are reserved in favour of their respective owners. The document, or parts thereof, should not be copied, adapted, redistributed, or otherwise used without the prior written permission of NEC Display Solutions Europe GmbH. This document is provided "as is" without warranty of any kind whatsoever, either express or implied. Errors and omissions are excepted.

NEC Display Solutions Europe GmbH may make changes, revisions or improvements in, or discontinue the supply of any product described or referenced in this document at any time without notice.

Document Name: NEC Product Overview
Document Revision: Edition 16, 2016
Document Date: 02/16

Orchestrating a brighter world

NEC