

### PERFORMANCE

#### Processor

Intel® Pentium® Gold G7400 (2C / 4T, 3.7GHz, 6MB)

#### Graphics

Integrated Intel UHD Graphics 710

#### Chipset

Intel B660

#### Memory

1x 4GB UDIMM DDR4-3200

#### Memory Slots

Two DDR4 UDIMM slots, dual-channel capable

#### Max Memory

Up to 32GB DDR4-3200

#### Storage

256GB SSD M.2 2280 PCIe® 4.0x4 NVMe®

#### Optane™ Memory

None

#### Storage Support

Up to two drives, 1x 3.5" HDD + 1x M.2 SSD

- 3.5" HDD up to 2TB
- M.2 SSD up to 1TB

#### Card Reader

7-in-1 Card Reader

#### Optical

None

#### Audio Chip

High Definition (HD) Audio, Realtek® ALC623-CG codec

#### Power Supply

180W 85%

### DESIGN

#### Keyboard

USB Calliope Keyboard, Black, English (UK)

#### Mouse

USB Calliope Mouse, Black

#### Expansion Slots

Two M.2 slots (one for WLAN, one for SSD)

#### Case Color

Mineral Grey

#### System Fan

None

#### Form Factor

SFF (7.4L)

#### Dimensions (WxDxH)

100 x 303.5 x 274.8 mm (3.9 x 11.94 x 10.8 inches)

#### Weight

6.25 kg (13.8 lbs)

### CONNECTIVITY

#### Ethernet

Integrated 100/1000M

#### WLAN + Bluetooth®

11ax, 2x2 + BT5.1

#### Front Ports

- 2x USB 3.2 Gen 1
- 1x USB-C® 3.2 Gen 1 (support data transfer and 5V@3A charging)
- 1x headphone / microphone combo jack (3.5mm)
- 1x microphone (3.5mm)

#### Optional Front Ports (configured)

1x card reader

#### Rear Ports

- 2x USB 2.0
- 2x USB 3.2 Gen 1
- 1x VGA
- 1x HDMI® 1.4
- 1x Ethernet (RJ-45)
- 1x power connector

### SECURITY & PRIVACY

#### Security Chip

Firmware TPM 2.0 integrated in chipset

### SERVICE

#### Base Warranty

1-year, Depot

#### Included Upgrade

None

### CERTIFICATIONS

#### Green Certifications

- ErP Lot 3
- RoHS compliant

### SOFTWARE

#### Operating System

Windows® 11 Home 64, English

#### Bundled Software

None

### MODEL

#### TopSeller

: Yes

#### Announce Date

: 2022-03-10

#### EAN / UPC / JAN

: 196800482099

#### End of Support

: 2028-01-15



## Premium Care - Advanced Support from Real People. Real Fast.

### REAL PERSON

Choose how you want to reach us - through the phone, chat or email - our expert technicians will take care of you.

### HASSLE FREE

'Getting started' and 'how-to' assistance for hardware and software. Easy solutions that are simple to reach - that's how Premium Care delivers you the ideal support experience.

### REAL FAST

Highly trained technicians will provide you real-time solutions, whatever the issue, on your first contact. If needed, our team will schedule an onsite visit for the next business day.

### PC HEALTH CHECK

Free annual PC Health Check that allows our experts to spot issues before you do so they can resolve them quickly and help you avoid PC problems.

## Accidental Damage Protection - Protection of your PC from the unexpected.

Experience shows that a significant portion of devices may be damaged (and not covered under warranty) in the first three years. Lenovo's Accidental Damage Protection service covers accidents beyond the system warranty such as drops, spills, bumps and even electrical surges. Make sure your new device has maximum protection, avoid unplanned costs and get peace of mind.

## Base Warranty – Included with the systems you purchase, default 1- or 3-year coverage window.

## Warranty Extensions & Upgrades – Service and protection that's right for your circumstances.

- Pick Up & Return Courier
- Onsite Support
- Technician Installed Customer
- Replaceable Unit Service
- International Warranty Upgrade

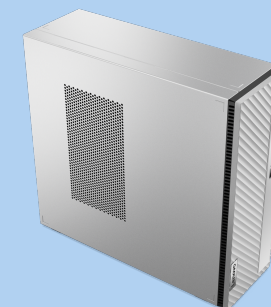
Lenovo may not offer the products, services or features discussed in this document in all regions. Lenovo may withdraw an offering at any time. Consult your local representative for information on offerings available in your area. Lenovo reserves the right to change specifications or other product information without notice. Lenovo is not responsible for photographic or typographical errors. Lenovo provides this publication "as is" without warranty of any kind, either express or implied, including the implied warranties of merchantability or fitness for a particular purpose.



intel



intel



intel

**PSREF**  
Product Specifications  
Reference