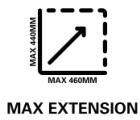


## AD110D0

AOC AD100 dual monitor arm with 360° pivot range and tilt function



MAX EXTENSION



TILT -45°/+90°



SWIVEL -90°/+90°



VESA MOUNT  
75x75 - 100x100mm



13" - 27"  
SUPPORTED SIZES



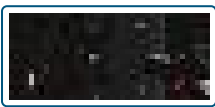
CABLE  
MANAGEMENT  
SYSTEM



360° ROTATION

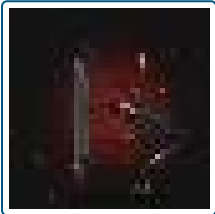


MAX 2-9 KG  
WEIGHT CAPACITY



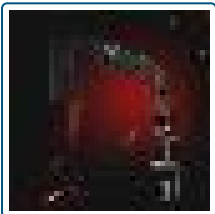
### VESA connection

Quick, easy and universal: All of AOC's monitor arms use the VESA mounting grid system (100x100 or 75x75) to connect the monitor with its mount. Once you attached your monitor, you no longer have to deal with your keyboard crashing against an obstructive display base in the heat of the game.



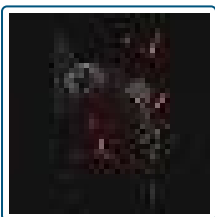
### Swivel-and-tilt function

Have you ever caught yourself moving closer to the monitor when solving complex puzzles or reading important text fragments you received in a game? Now you can simply move your monitor in any direction, bring it closer, tilt, or adjust vertically or horizontally - whatever you need to see your game in the perfect angle!



### C-Lamp or Grommet Mount attachment

Your new AOC monitor arm is guaranteed to fit onto your desk. With either the grommet mount or the c-lamp method, you can easily fasten the mount to your tabletop. Your monitor will be firmly secured and ready for every gaming action.



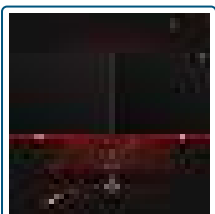
### Cable Management

Even the most expensive gaming setup can look cheap with loose cables hanging around. The integrated cable management system turns your desk in a tidy, organised space in seconds: open up the covers of your AOC monitor arm, tug in the cables and close it again. Magically, your gaming space suddenly looks like the tidy setup of a professional top streamer.



### Mechanical Gas Spring System

Tired of cables hanging around? The integrated cable management system turns your desk into a tidy, organised space in seconds: open up the covers of your AOC monitor arm, tug in the cables and close it again. Magically, your gaming space suddenly looks like the tidy setup of a professional top streamer.



### Double mount

Why limit yourself with one monitor if you can stream a game on your first screen while also interacting with your chat on the second? You can save desk space by going for a double mount and achieve a professional looking aesthetic for your gaming area.

<b>General</b>	
Model name	AD110D0
EAN	4038986636735
Product Line	Accessories
Channel	B2C
Section	Gaming
Launch date	01-09-2019

<b>Product Features</b>	
Ergonomic Adjustment System	Gas Spring
Supported Monitor Size Range	13" - 27"
Built In Cable Management	✓
Weight Capacity Range (each monitor arm)	2 - 9 Kg
Maximum Height	580 mm
Adjustable Height Range	320 mm
Stretch Length Range	460 mm
Tilt Range	-45° ~ +60°
Swivel Range	-90° ~ +90°
Pivot range	360°

<b>Warranty</b>	
Warranty Period	5 Years

<b>Dimensions / Weights</b>	
Product weight	4.12 kg
Packaging Dimensions (L x W x H)	69 x 12.5 x 24.5 cm mm
Packaging Weight	5.1 kg

<b>What's in the box?</b>	
What's in the box?	Monitor Arm, Clamp mount, Grommet mount, Installation materials, User manual

<b>Connectivity</b>	
VESA Plate Monitor Mount	75x75mm, 100x100mm
Desk Mount Base	Clamp, Grommet mount
Clamp Mount Table Thickness Range	0 - 10.5 cm
Grommet Mount Table Thickness range	0 - 8.3 cm
Grommet Mount Table Surface Hole Range	0.7 - 8.7 cm

<b>Design</b>	
Colour	Black
Material	Aluminium Alloy