

ATRIA

WI-FI MESH HOME KIT AX3000



High Performance Mesh Wi-Fi 6 System

Using state of art Easy Mesh solution, STRONG's Wi-Fi Mesh Home Kit AX3000 combines Mesh technology with powerful Wi-Fi 6, MUMIMO and OFDMA technologies for ultimate speed and coverage at home. Atria MeshkitAX3000 is the perfect solution to manage the fast growing numbers of Wi-Fi devices at your home. This package of 2 ATRIA Mesh AX3000 replaces your current Wi-Fi network without changing your modem or router. It brings a super-fast and seamless roaming Wi-Fi network at a speed up to 3000 Mbit/s with coverage up to 350 m². Depending on the size of your house, you can add up to 4x additional ATRIA Mesh AX3000 (up to 6x ATRIA Mesh AX3000 cover an area of up to 1050 m²). Manage your Wi-Fi Mesh network at a nger touch with the ATRIA Mesh App available for Android and iOS devices.

Full Wi-Fi coverage of your house

- No more Wi-Fi dead zones
- A set of Smart Access Points to use Wi-Fi in every room

Ultra-fast & stable Wi-Fi in every room of your house

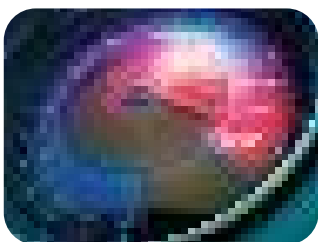
- Super 4K video delivery to every device with zero buffering
- Stream multiple UHD videos simultaneously and watch live TV from anywhere on any device
- Wi-Fi 6 dual band concurrent network at speed up to 3000 Mbit/s

Mobile and fixed devices always connected at the highest speed

- Up to 254 concurrent connected devices capacity
- Dynamic Wi-Fi & client management based on "Easy Mesh" technology
- Multiple access points configuration to dramatically improve your



Wi-Fi performance



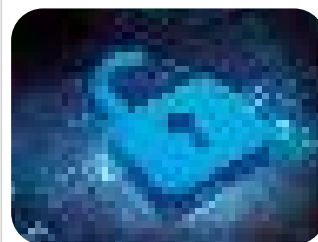
- Supports Wi-Fi 6 (802.11ax/ac/n/g/b/a) standards
- Speed up to 3000 Mbit/s
- Support MU-MIMO and OFDMA technologies (574 Mbit/s @2.4GHz) + (2402Mbit/s @5GHz)
- Support DFS Channels

Coverage & Reliability



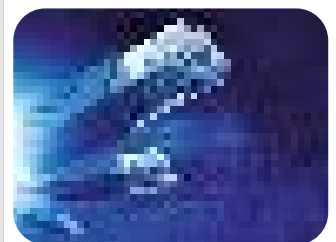
- Easy MESH Support for maximum coverage, performance and connectivity
- Up to 254 connected devices capacity
- Multiple Access Points Configuration
- Only one Wi-Fi name all over the house
- Intelligent roaming in Mesh configuration
- Wi-Fi Mesh Home Kit AX3000 covers up to 350 m²
- Up to 6x ATRIA Mesh AX3000 cover up to 1050 m² on multiple floors

Security



- WPA™/WPA2™ /WPA3™ for Wi-Fi security
- Connect & Secure (WPS) button to add additional ATRIA Mesh AX3000 in few minutes
- Connect & Secure (WPS) button to simply connect your Wi-Fi devices to your Wi-Fi Mesh network

Connections



- 3x Gigabit LAN/WAN Ethernet ports on each ATRIA Mesh AX3000 to connect any computer, settop-box, Smart TV, NAS, game console, ...
- TR069/TR098/TR181 compliant
- ATRIA Mesh app to manage your Wi-Fi Mesh network at a nger touch
- Mesh/Access Point/ Router operational modes
- Works with any standard modem or router

WI-FI MESH HOME KIT AX3000

Wi-Fi

| | |
|--------------------|---|
| Frequency | 2412 MHz-2462 MHz & 5180 MHz-5240 MHz & 5250 MHz-5350 MHz & 5470 MHz-5580 MHz |
| Standard | Wi-Fi 6 - IEEE 802.11ax/ac/n/g/b/a |
| Signal Rate | 5 GHz: Up to 2402 Mbps 2.4 GHz: Up to 574 Mbps |
| Security | WPA™/WPA-PSK™ & WPA2™/WPA2-PSK™ & WPA3- SAE™ |
| Antennas | 4* Internal Antennas (3dBi) |
| Transmit Power | Europe: <20 dBm (2.4 GHz), <23 dBm (5 GHz) |
| Supported Channels | 5 GHz: 36, 40, 44, 48, 52, 56, 60, 64, 100, 104, 108, 112 2.4 GHz: 1, 2, 3, 4, 5, 6, 7, 8, 9, 10, 11, 12, 13 |

Hardware

| | |
|----------------|--|
| CPU | Dual-core CPU 900MHz |
| Ethernet Ports | 2x 10/100/1000M LAN ports (Auto MDI/MDIX) 1x 10/100/1000M WAN ports (Auto MDI/MDIX) |
| Buttons | Connect & Secure (WPS), Reset, ON/OFF button |
| LEDs | Power, Internet, Pairing, 2.4 GHz and 5 GHz Wi-Fi |
| Power | External power supply, 12V/2 A DC |
| Standards | IEEE 802.3, IEEE 802.3u, IEEE 802.3ab |

Software

| | |
|-----------------|--|
| Multiple SSID | 4x2.4 GHz + 4x 5 GHz |
| Basic Network | DHCP client, IGMP v1/v2, IPv4/v6, WDS, WPS, WMM |
| Router Features | DHCP server, DNS relay/proxy, NAT/NAPT, IGMP proxy, Firewall, VPN passthrough, DMZ, URL/IP/MAC Filtering, Port Forwarding |
| UPnP Management | Universal Plug & Play Internet Gateway Device TR069/TR098/TR181, Web User Interface, Time Settings, Configuration Backup/Restore, Firmware Upgrade, System Log |
| ATRIA Mesh app | Android and IOS downloadable app to manage the Wi-Fi Mesh network |

1. Power LED
2. Pairing LED
3. Internet LED
4. 2.4 GHz LED
5. 5 GHz LED
6. Power supply connector
7. On/O Power button
8. Reset button
9. Connect & Secure (WPS) button
10. 3x Gigabit LAN/WAN Ethernet ports

Mesh technology

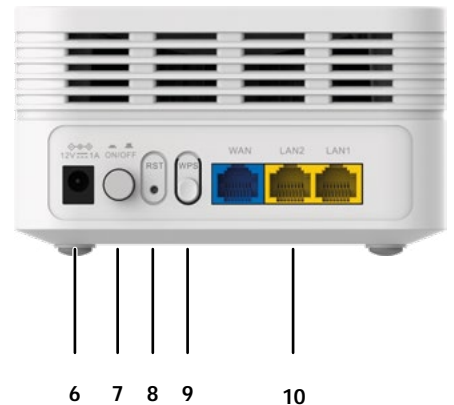
| | |
|--|--|
| Easy MESH Compliant | Automatically Organized Network Intelligent Roaming (client band steering) Auto Configuration Seamless Roaming Auto MESH Routing User Load Balancing Auto Healing (Redundancy and Fail-over) Up to 6x ATRIA Mesh AX3000 in one Mesh |
| Multiple Access Point architecture Network | Unique Wi-Fi name Only one Wi-Fi name all over the house |
| Ethernet backhaul | Mesh nodes can also be connected through Ethernet for better performances |

Other specifications

| | |
|---------------------|---|
| Certification | CE |
| Package Contents | 2x ATRIA Mesh AX3000 2x Power Supply Units (12V/2 A DC) 1x CAT5E Ethernet Cable 1x Installation Instructions, Warranty Card, Safety Instructions |
| System Requirements | Internet Browser |

Environment

| | |
|-----------------------------|------------------------|
| Operating temperature | 0° C ~ +45° C |
| Storage temperature | -20° C ~ +70° C |
| Operating humidity | 10%~90% non-condensing |
| Storage humidity: | 0%~90% non-condensing |
| Dimensions (WxDxH) per unit | 128*128*73 mm |
| Weight per unit | 320 g |



EAN MESHKITAX3000: 9120072374883

PCB: 6 pcs.