



Antec
NX500M
Mid-Tower M-ATX Gaming Case



UNIQUE DESIGN & POWERFUL HEAT DISSIPATION

The NX500M features a unique design and excellent cooling performance. The half-tempered glass side panel design allows you to show off your gaming configurations without any obstacles. 6 x 120mm fans can be installed simultaneously.



SLEEK DESIGN WITH MASSIVE AIR INTAKE

The sleek and elegant window design provides ample airflow for your system for maximum cooling while creating minimal dust intake. The panel comes equipped with a Type-C port for added convenience for use.



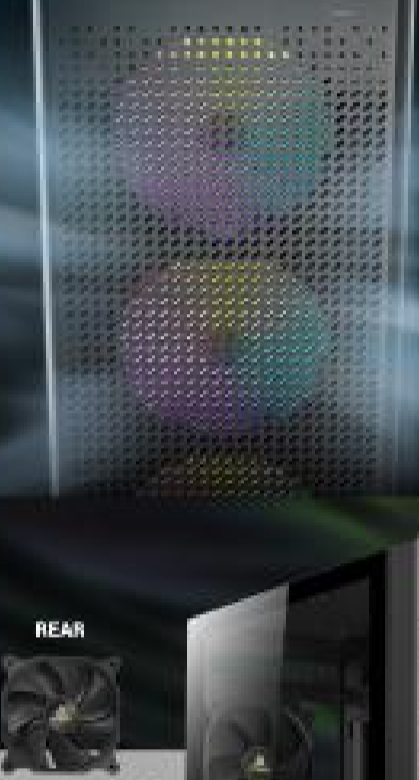
POWERFUL COOLING

Supports a 360mm (Length x 39mm) Radiator at the front and a 240mm radiator at the top.



POWERFUL FAN COMPATIBILITY

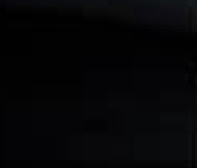
Supports 3 x 120mm fans at the front.



HIGH-AIRFLOW MESH FRONT PANEL

Massive air intake at the front provides ample airflow.

REAR



PRE-INSTALLED 1 X 120MM FAN

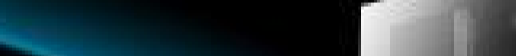


I/O PANEL

Power, Reset, Type-C 3.2 Gen 2 x 1, USB 3.0 x 1, USB 2.0 x 2, MIC/HD-AUDIO



Type-C 3.2 Gen 2



NEAT BUILD WITHIN REACH

38mm space for cable management ensures your PC build looks neat.

TEMPERED GLASS SIDE PANEL

Showcase your personalized hardware and custom water-cooling systems.

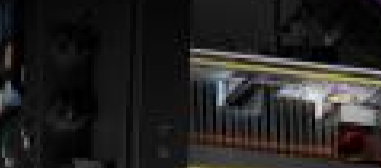


UP TO 6 X 120MM FANS SIMULTANEOUSLY



COMPATIBILITY

Motherboard support	Micro-ATX, ITX	Case Depth	210mm
Form Factor	Mid-Tower	Case Weight	4.45kg
Case Material	Steel + Plastic	Power Supply Max Length	• 260mm (with front fan) • 220mm (without front fan)
Side Window Material	Tempered Glass	Drive Bays	• 3.5" / 2.5" Drive Mounts: 2 / 2
I/O Ports	Power, Reset, Type-C 3.2 Gen 2 x 1, USB 3.0 x 1, USB 2.0 x 2, MIC/HD-AUDIO	Dimensions	• Case Dimensions (without): 465 x 200 x 457mm



UNLIMITED PERFORMANCE

Max GPU Length: 320mm (Fans are installed at the exterior)



REMOVABLE HDD DRIVE CAGE

The HDD drive cage is removable to increase PSU installation space. With the drive cage installed, the PSU compartment can accommodate PSUs up to 180mm in length. With the drive cage removed, the PSU compartment can accommodate PSUs up to 220mm in length.



DIMENSIONS

465 x 200 x 457 mm (DWH)



SPECIFICATIONS

Main Spec	Expansion Slots
Motherboard Support: Micro-ATX, ITX	Standard: 4
Form Factor: Mid-Tower	Drive Bays
Case Material: Steel + Plastic	3.5": 2
Side Window Material: Tempered Glass	5.25": 2 Drive Mounts: 2/2
I/O Ports: Power, Reset, Type-C 3.2 Gen 2 x 1, USB 3.0 x 1, USB 2.0 x 2, MIC/HD-AUDIO	Dimensions
	Case Dimensions (without): 465 x 200 x 457mm
	Net Weight: 4.45kg
	Gross Weight: 4.45kg
	Accessories
	Included Fans: 1 x 120mm Regular Fan
Compatibility & Clearance	General
CPU Cooler Max Height: • 180mm	Grid Filter: Top / Bottom
GPU Max Length: • 320mm (with front fan) • 220mm (without front fan)	Warranty: 3 year
Power Supply Max Length: • 180mm (with HDD) • 220mm (without HDD)	UPC#: 8700345 81806-2
Cable Routing Space: • 28mm	
Fan Support	
Front: 3 x 120mm (2 x 140mm)	
Top: 2 x 120mm (2 x 140mm)	
Rear: 1 x 120mm	
Radiator Support	
Front: 120 / 140 / 240 / 280 / 360 (Length x 24mm)	
Top: 120 / 240mm	
Rear: Up to 120mm	

