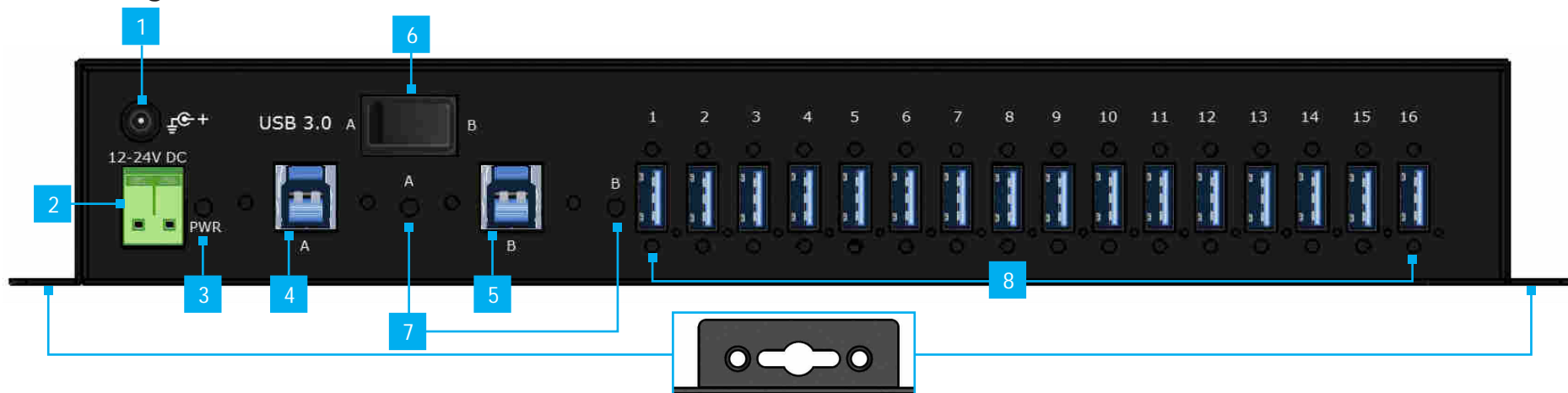


16-Port Industrial USB 3.2 Gen 1 Hub - ESD and Surge Protection - Dual Host

Product ID

5G16AINDS-USB-A-HUB

Product Diagram



Component	Function
1	DC Power Input <ul style="list-style-type: none"> Connect a +12~24 V DC Power Source <ul style="list-style-type: none"> 120W or higher recommended for maximum power performance
2	DC 2-Wire Terminal Block Power Input <ul style="list-style-type: none"> Connect a +12~24 V DC Power Source <ul style="list-style-type: none"> 120W or Higher Recommended for maximum power performance
3	Power LED <ul style="list-style-type: none"> Indicates if the USB Hub is receiving power from either a USB Host or a DC Power Source <ul style="list-style-type: none"> Solid Green - <i>Receiving Power</i> O - <i>Not Receiving Power</i>
4	USB Host Port A (Screw Locking, USB-B) <ul style="list-style-type: none"> Connect to a USB-A Port on a Host Computer <ul style="list-style-type: none"> USB 3.2 Gen 1 (5 Gbps)
5	USB Host Port B (Screw Locking, USB-B) <ul style="list-style-type: none"> Connect to a USB-A Port on a Host Computer <ul style="list-style-type: none"> USB 3.2 Gen 1 (5 Gbps)

6	Host Device Port Switch <ul style="list-style-type: none"> Switches Hub Connectivity between USB Host Ports A & B
7	USB Host Selection LEDs <ul style="list-style-type: none"> Indicates which Host Device is currently selected <ul style="list-style-type: none"> Solid Green - Host Device Selected O - Host Device Not Selected
8	16x USB Data/Charge Ports (Screw Locking, USB-A) <ul style="list-style-type: none"> Connect USB Peripherals <ul style="list-style-type: none"> USB 3.2 Gen 1 (5 Gbps) BC 1.2 Charging with 5V 2.0A Maximum or 1.5A Simultaneous
9	1U Mounting Brackets <ul style="list-style-type: none"> Mount the USB Hub into 1U of Rack Space Mount the USB Hub to a wall or the side/underside of a Desk

Package Contents

- USB Hub x 1
- 10 ft [3 m] USB-A to USB-B Cable x 1
- Terminal Block Connector (Attached)
- DIN Rail Mounting Brackets (with Mounting Screws) x 2
- Quick-Start Guide x 1

Requirements

- Computer (1 or 2 units)
 - USB-A Port
- 12-24V DC Power Source

For the latest drivers, manuals, product information, technical specifications, and declarations of conformance, please visit: www.StarTech.com/5G16AINDS-USB-A-HUB

Installation

Notes:

- Connect the **Power Source** after all the other installation steps have been completed.
- There are two ways to power the **USB Hub**.
Using an external **DC Power Adapter** or a **Terminal Block Power Source**. **Voltage (+12 - 24 V DC)**.

Connect the USB Ports

1. Connect up to 16 USB peripherals to the **Screw Locking USB Data/Charge Ports**, located on the **USB Hub**.
2. Use the 2x **USB-A to USB-B Cables** (1x cable included, second sold separately), to connect a USB port on each **Computer** to the **USB Host A & B Ports**, located on the **USB Hub**.
 - The **Computer** will automatically detect the device and install the required drivers for the **USB Hub**.

Power the Hub

Power the Hub Using the 2-Wire Terminal Block

1. Remove the **Terminal Block Connector Housing** from the **USB Hub's Casing**.
2. Loosen the screws for the **Terminals** located on the **Terminal Block Connector**, using a **Flat Head Screwdriver**.
3. Connect the **Positive and Negative Wires** from the **12-24V DC Power Source** (not included) to the **Terminals** on the **Terminal Block Connector**.

Use of Trademarks, Registered Trademarks, and other Protected Names and Symbols

This manual may make reference to trademarks, registered trademarks, and other protected names and/or symbols of third-party companies not related in any way to StarTech.com. Where they occur these references are for illustrative purposes only and do not represent an endorsement of a product or service by StarTech.com, or an endorsement of the product(s) to which this manual applies by the third-party company in question. StarTech.com hereby acknowledges that all trademarks, registered trademarks, service marks, and other protected names and/or symbols contained in this manual and related documents are the property of their respective holders.

Warranty Information

This product is backed by a 2-year warranty.

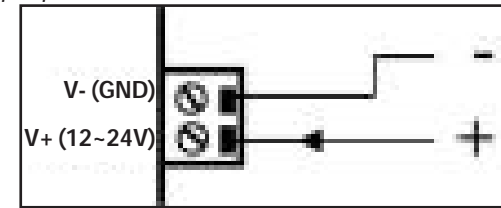
For further information on product warranty terms and conditions, please refer to www.startech.com/warranty.

Limitation of Liability

In no event shall the liability of StarTech.com Ltd. and StarTech.com USA LLP (or their officers, directors, employees or agents) for any damages (whether direct or indirect, special, punitive, incidental, consequential, or otherwise), loss of profits, loss of business, or any pecuniary loss, arising out of or related to the use of the product exceed the actual price paid for the product. Some states do not allow the exclusion or limitation of incidental or consequential damages. If such laws apply, the limitations or exclusions contained in this statement may not apply to you.

StarTech.com Ltd. 45 Artisans Cres London, Ontario N5V 5E9 Canada	StarTech.com LLP 4490 South Hamilton Road Groveport, Ohio 43125 U.S.A.	StarTech.com Ltd. Unit B, Pinnacle 15 Gowerton Rd, Brackmills Northampton NN4 7BW United Kingdom	StarTech.com Ltd. Siriusdreef 17-27 2132 WT Hoofddorp The Netherlands	FR: startech.com/fr DE: startech.com/de ES: startech.com/es NL: startech.com/nl IT: startech.com/it JP: startech.com/jp
---	---	--	--	--

Note: Ensure the polarity of the power input is correctly matched with the **DC 2-Wire Terminal Block Pins** to function properly and to prevent damage to the **USB Hub** and any connected peripherals.



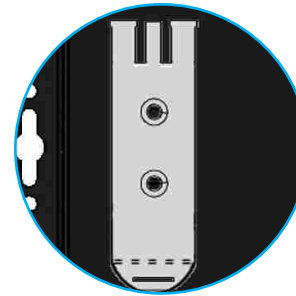
Terminal Block Pins

4. Insert the **Terminal Block Connector Housing** back into **USB Hub**.

Power the Hub Using an External Power Adapter

- Connect a **Power Adapter** (not included) to the **Power Input Port**, located on the front of the **USB Hub** and to an **AC Electrical Outlet**.

DIN Rail Mounting



This **USB Hub** includes **DIN Rail Brackets** that can be used to horizontally mount the **USB Hub** to a **DIN Rail**. To install the **DIN Rail Brackets** on the **USB Hub**:

1. Align the **Din Rail Brackets** (x 2) with the **DIN Rail Mounting Holes**, located on either side at the back of the **USB Hub**.
2. Insert the **Mounting Screws** (x 4) through the **DIN Rail Brackets**, and into the **USB Hub**.
3. Using a **Phillips Head Screwdriver** tighten the **Mounting Screws**. Be careful not to over-tighten the **Mounting Screws**.

Regulatory Compliance

FCC - Part 15

This equipment has been tested and found to comply with the limits for a Class B digital device, pursuant to part 15 of the FCC Rules. These limits are designed to provide reasonable protection against harmful interference in a residential installation. This equipment generates, uses and can radiate radio frequency energy and, if not installed and used in accordance with the instructions, may cause harmful interference to radio communications. However, there is no guarantee that interference will not occur in a particular installation. If this equipment does cause harmful interference to radio or television reception, which can be determined by turning the equipment off and on, the user is encouraged to try to correct the interference by one or more of the following measures:

- Connect the equipment into an outlet on a circuit different from that to which the receiver is connected.
- Consult the dealer or an experienced radio/TV technician for help

This device complies with part 15 of the FCC Rules. Operation is subject to the following two conditions:

(1) This device may not cause harmful interference, and (2) this device must accept any interference received, including interference that may cause undesired operation. Changes or modifications not expressly approved by StarTech.com could void the user's authority to operate the equipment.

Industry Canada Statement

This Class B digital apparatus complies with Canadian ICES-003.

Cet appareil numérique de la classe [B] est conforme à la norme NMB-003 du Canada.

CAN ICES-3 (B)/NMB-3(B)

This device complies with Industry Canada licence-exempt RSS standard(s). Operation is subject to the following two conditions: (1) This device may not cause interference, and (2) This device must accept any interference, including interference that may cause undesired operation of the device.

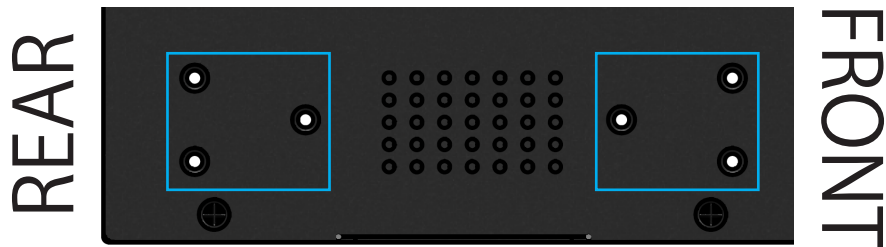
Le présent appareil est conforme aux CNR d'Industrie Canada applicables aux appareils radio exempts de licence. L'exploitation est autorisée aux deux conditions suivantes:

(1) l'appareil ne doit pas produire de brouillage, et (2) l'utilisateur de l'appareil doit accepter tout brouillage radioélectrique subi, même si le brouillage est susceptible d'en compromettre le fonctionnement.

Rack Mount the USB Hub (5G16AINDS-USB-A-HUB)

This **USB Hub** includes **Rack Mounting Brackets** that can be used to mount the **USB Hub** into 1U of EIA-310 compliant 19" rack space.

The **USB Hub** features two sets of Rack Mounting Holes (front and rear), located on either side. This enables the **USB Hub** to be mounted to at either the front or rear, depending upon your preference.

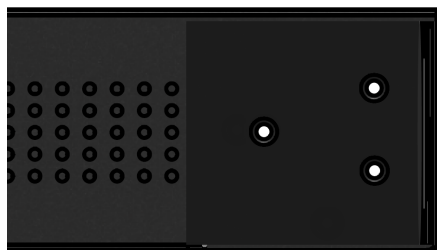


To install the **Rack Mounting Brackets** on the **USB Hub**:

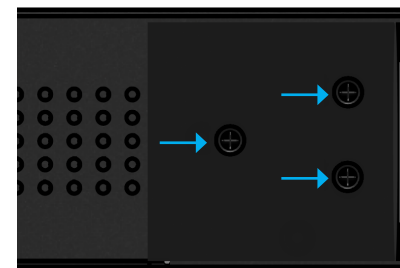
1. Remove the pre-installed Mounting Screws (x6) from the front or rear (depending upon your mounting preference) on both sides of the **USB Hub** (x3 **Mounting Screws** per side).



2. Align the **Rack Mounting Brackets** (x 2) with the Rack Mounting Holes, located on either side of the **USB Hub**.



3. Reinsert the **Mounting Screws** (x 6, removed in step 1) through the **Rack Mounting Brackets**, and into the **USB Hub**, on both sides, and tighten the **Mounting Screws** using a Phillips Head Screwdriver. Be careful not to over-tighten the **Mounting Screws**.



To install the **USB Hub** (with **Rack Mounting Brackets** attached) into 1U of EIA-310 compliant 19" rack space:

1. Locate a suitable location in the rack/cabinet to mount the **USB Hub**. The **USB Hub** itself requires 1U of space within the rack/cabinet.
2. If the Rack/Cabinet uses square mounting holes, install cage nuts into the square mounting holes on the front posts of the rack.



3. Place the **USB Hub** (with **Rack Mounting Brackets** attached) into the rack and align the mounting points on the front brackets of the **USB Hub's Mounting Brackets** with the mounting points on the rack (e.g. the cage nuts, if used).
4. Use cabinet screws to secure the **USB Hub** to the rack. If not using cage nuts or M5/ M6 threaded rack posts, the appropriate mounting hardware for the rack should be used.



5. Make sure the screws are properly tightened and the **USB Hub** has no movement.