



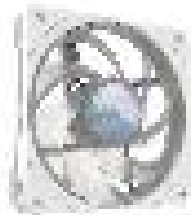
Cooler Master's MasterLiquid PL360 Flux White Edition is the new colorway of our Flux Series enhanced performance cooling. The dual chamber pump has further honed flow and pressure to target hot spots for rapid and precise heat dissipation. Surface area of the copper base and microchannels have been calculated for a superior heat transfer ratio. Equipped with new fan blades with an interconnecting loop delivering high speed performance, the fan fine is tuned to produce an optimized sound output. It also integrates new Addressable Gen 2 RGB for support with major motherboard manufactures, customizable with both the included **Addressable Gen 2 RGB controller and Cooler Master's MasterPlus+** software.

MASTERLIQUID PL360 FLUX WHITE EDITION



Dual Chamber Pump

New Compact Performance Dual Chamber pump delivers the perfect balance of water flow and pressure for impressive cooling.



Enhanced Air Balance Fan Blades

120 mm square frame ARGB fan designed with inter-connecting air balance fan blades uniquely modified for the PL-Flux Series.



Slim & Sleek Radiator

Low profile radiator with superior fin density coupled with performance fans dissipates heat rapidly.

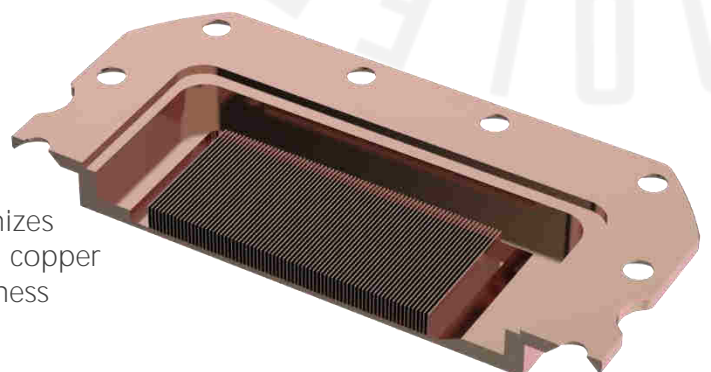


Superior Performance Ratio

Precision engineered ultra-thin spaded fins maximizes microchannels accurately targets heat spots. Enlarged copper base surface area optimized with ideal base thickness accelerates heat transfer.

Ultimate Heat Exchange

High speed motor utilizing a ceramic bearing impeller forces balanced water flow to and from the radiator for ultimate efficiency of heat exchange.



PL-Flux specific fans

Inter-connecting air balance fan blades increased sturdiness and stability operating steadily at high speed. Angled inner rim of fan frame increasing intake of air, at the same time gap between from and blades creating greater air pressure.

Performance Dual Chamber – Optimized flow and pressure targeting hot spots for precision heat dissipation

Superior Performance Ratio - Combined copper base and microchannel to surface area refined for ultimate heat transfer maximization

Radiator Fan Enhancement - Enhanced fan blades with interconnecting loop delivers high speed performance

Fan Noise Calibration - Fine tuned fan engineering produces optimized noise output

Dual Loop ARGB Pump Lighting - Addressable Gen 2 RGB ready for independent implemented customization

SPECIFICATIONS

Product Name	MasterLiquid PL360 FLUX WHITE EDITION
Product Number	MLY-D36M-A23PZ-RW
Exterior Color	WHITE
RAM Clearance	N/A
Warranty	5 years

CPU Socket	Intel	Intel® LGA 1700 / 1200 / 2066 / 2011-v3 / 2011 / 1200 / 1151 / 1150 / 1155 / 1156 socket
	AMD	AMD® AM5 / AM4 / AM3+ / AM3 / AM2+ / AM2 / FM2+ / FM2 / FM1/TR4
Radiator	Material	Aluminum
	Dimensions (L x W x H)	394 x 119.6 x 27.2mm(15.5 x 4.7 x 1.07inch)
Pump	Dimensions (L x W x H)	89 x 75 x 40 mm (3.5 x 2.95 x 1.57 inch)
	MTTF	>210,000 hours
	Noise Level (Max)	15dB(A)
	Connector	4-Pin
	Rated Voltage	12 VDC
	Power Consumption	6 W

Fan	Dimensions (L x W x H)	120 x 120 x 25 mm(4.7 x 4.7 x 1 inch)
	Quantity	3 Pcs
	LED Type	Addressable Gen 2 RGB
	Speed (RPM)	0~2300 ± 10%
	Airflow (Max)	122.96 m³/h (72.37 CFM)
	Noise Level (Max)	32dB(A)
	Pressure (Max)	2.96 (mmH2O)
	Bearing	Oil Reflow Bearing System
	MTTF	>160,000 hours
	Power Connector	4-Pin PWM
	Rated Voltage	12 VDC
	Rated Current	0.15A
	Safety Current	0.3A

PACKING INFORMATION

EAN code	4719512131978
UPC code	884102104299
Net weight	1.98kg
Gross weight	3.01kg
Package dimension (L x W x H)	43.7 X 23.2 X 14.4 cm
Carton dimension (L x W x H)	57 x 45.5 x 26.5 cm
Units/CTN	4

Cont.	W/ Pallet	Carton/ Pallet	W/O Pallet
20'	1120	28	N/A
40'	2352	28	N/A
40 HQ	2688	32	N/A