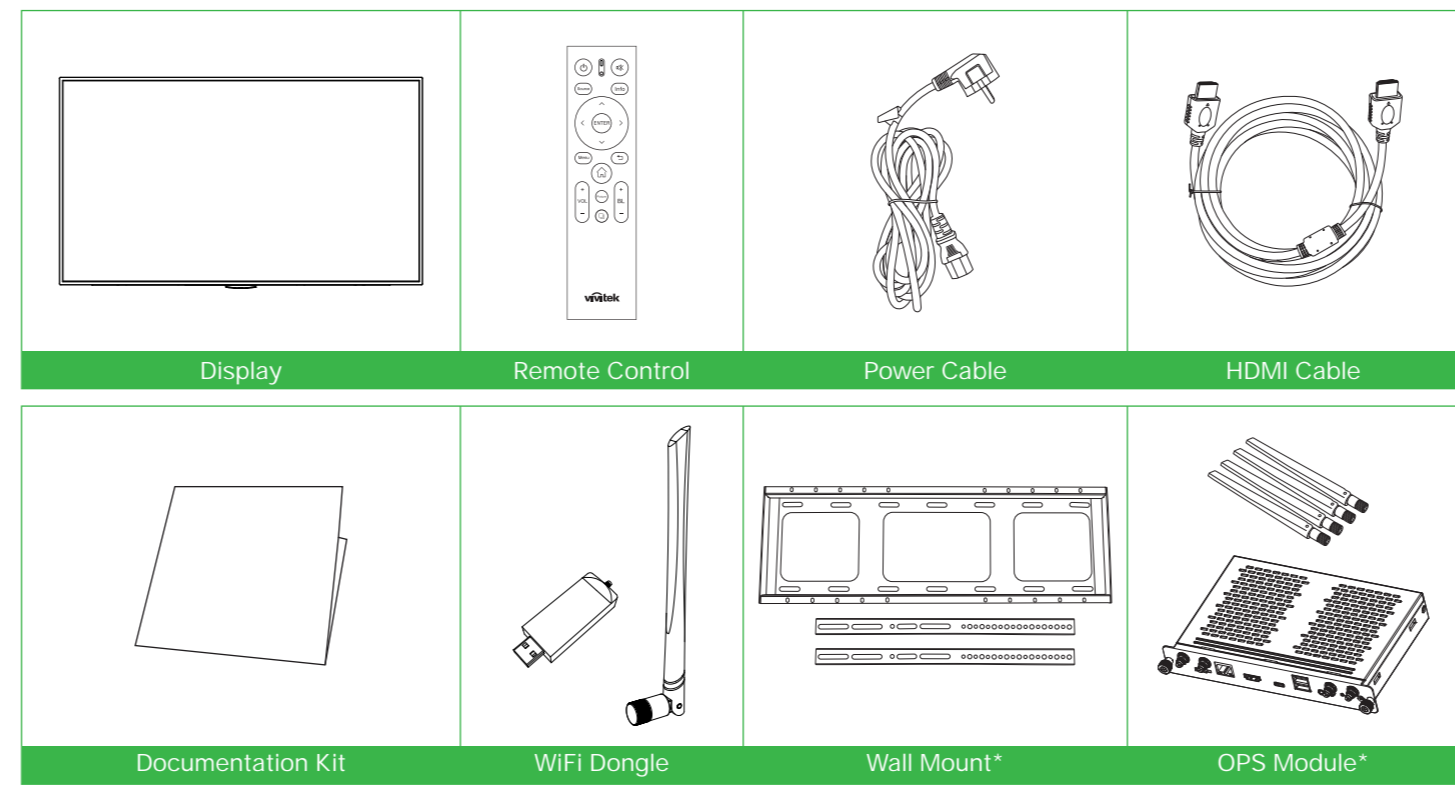




**NovoDisplay**  
DKxx3 Series



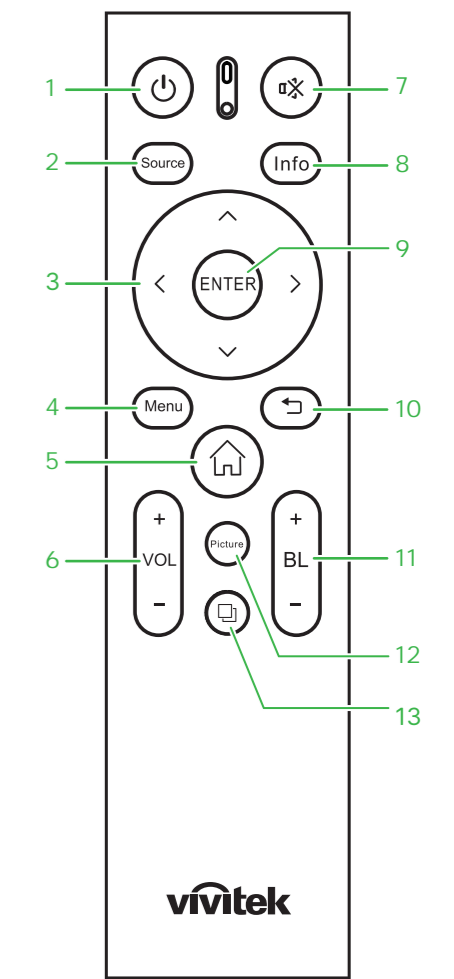
## 1 Package Contents



\*OPS Module is an optional accessory.  
\*Wall mount is an optional accessory.

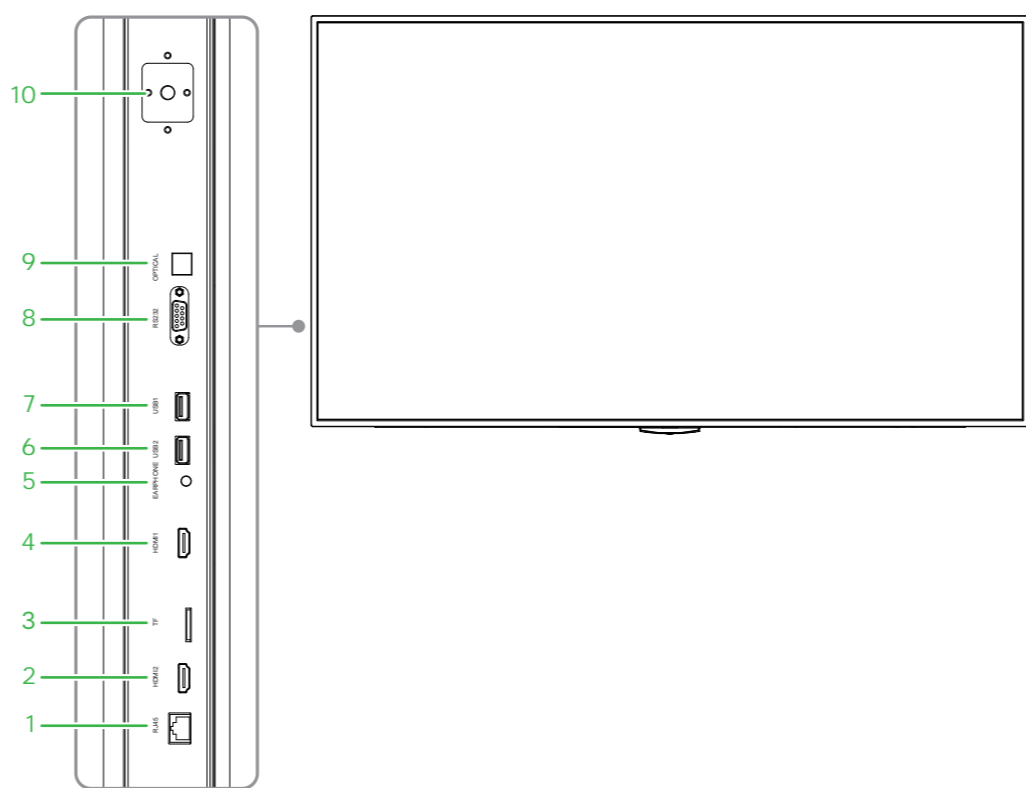
## 2 Remote Control

- 1 Power
- 2 Input Source
- 3 Navigation Buttons
- 4 Menu
- 5 Home
- 6 Volume +/-
- 7 Mute
- 8 Display Information
- 9 Enter
- 10 Back
- 11 Backlight +/-
- 12 Display mode
- 13 Recent apps



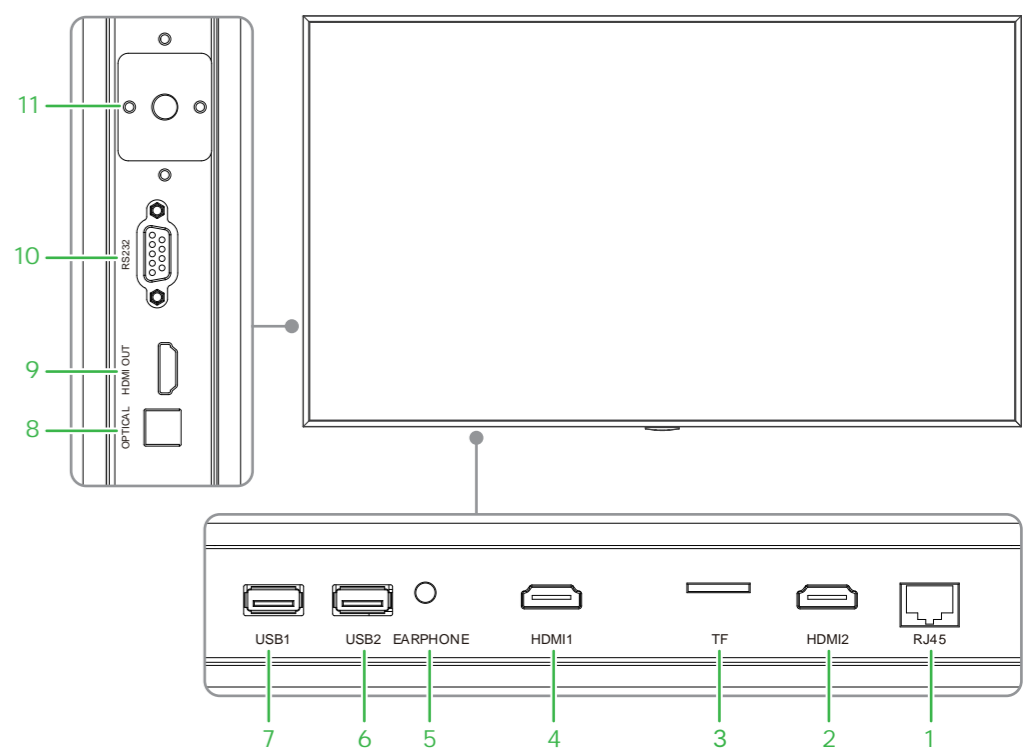
## 3 DK433 IO Ports

- 1 LAN Port
- 2 HDMI In Port 2
- 3 TF Card Slot
- 4 HDMI In Port 1
- 5 Audio Out
- 6 USB 2
- 7 USB 1
- 8 RS-232
- 9 Optical Port
- 10 HDMI Out
- 11 WiFi Dongle Slot

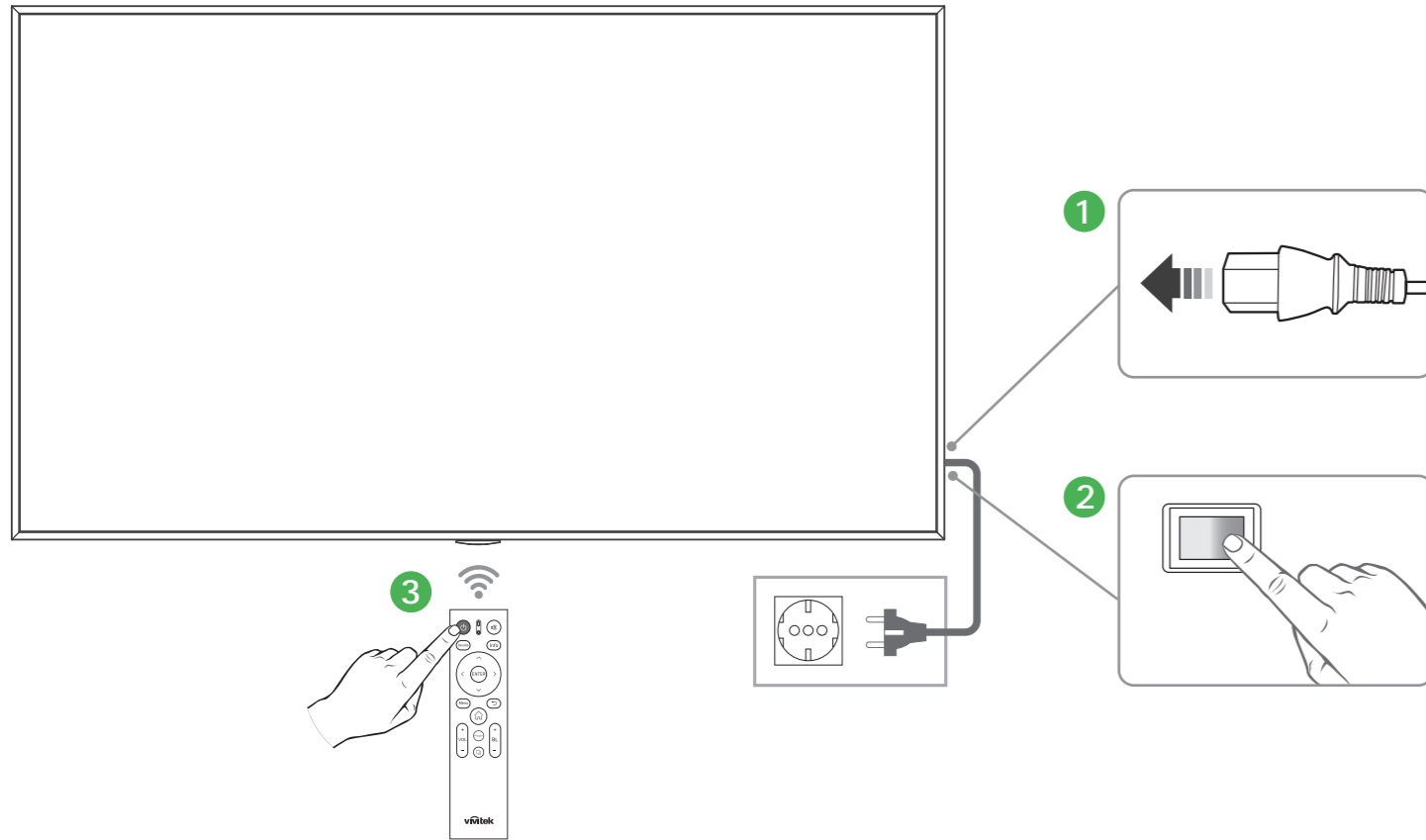


## 4 DK553 / DK653 / DK753 / DK863 IO Ports

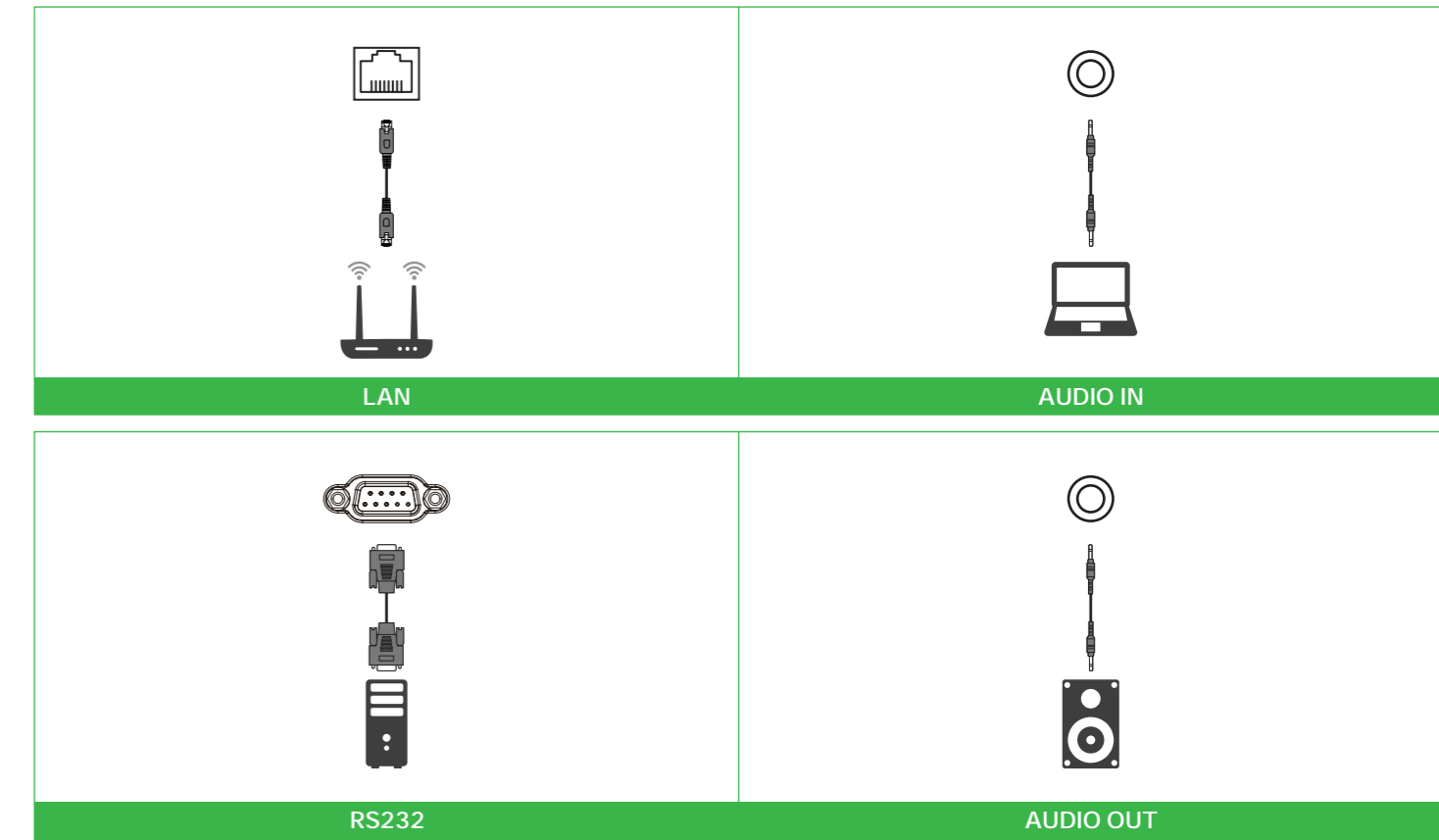
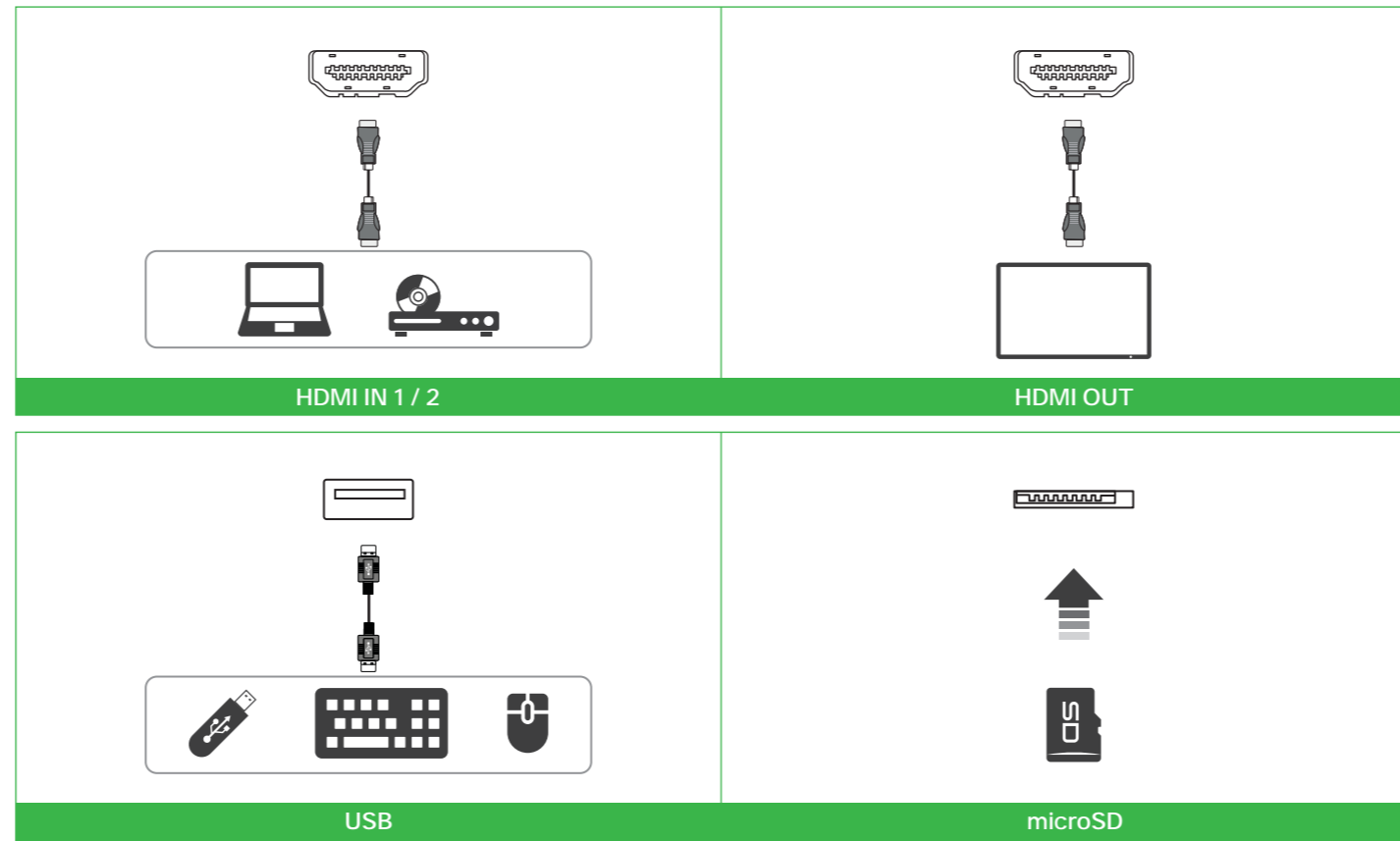
- 1 LAN Port
- 2 HDMI In Port 2
- 3 TF Card Slot
- 4 HDMI In Port 1
- 5 Audio Out
- 6 USB 2
- 7 USB 1
- 8 Optical Port
- 9 HDMI Out
- 10 RS-232
- 11 WiFi Dongle Slot



## 5 Display Overview (Front)



## 6 Connections

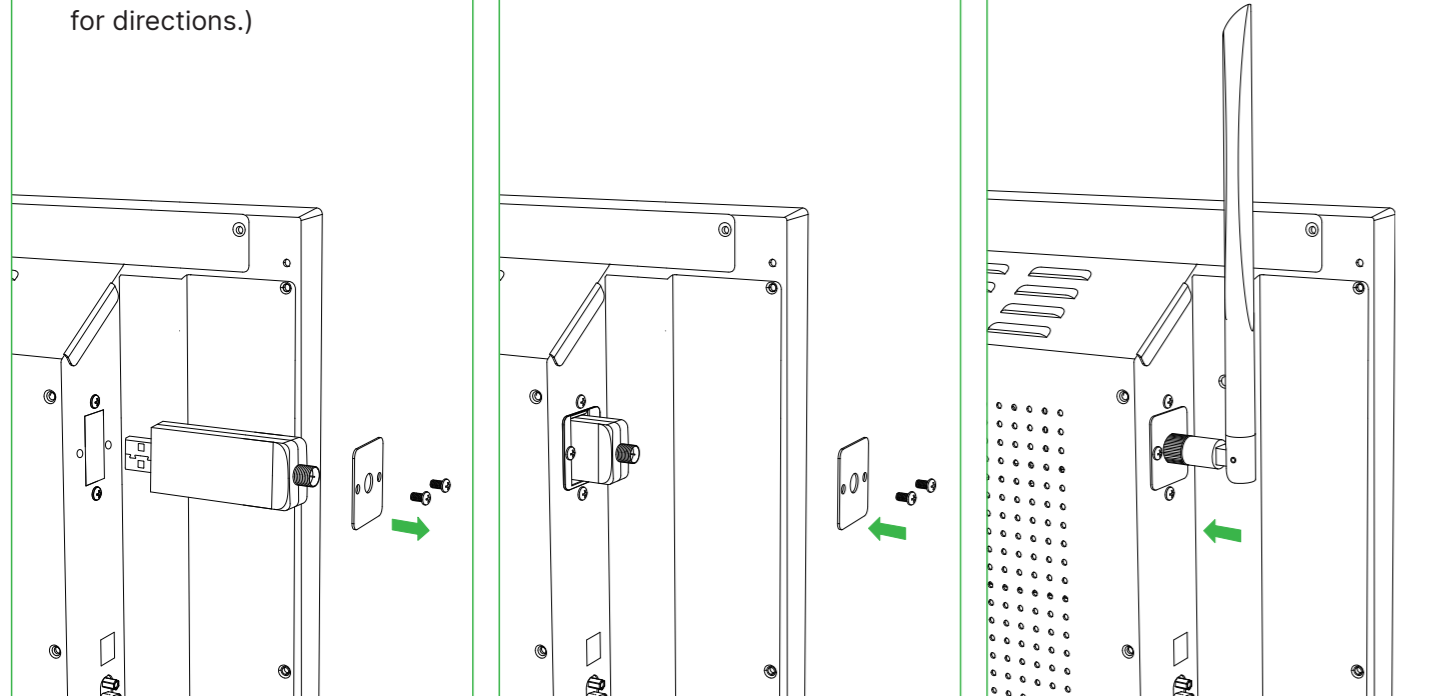


## 7 Getting Started

1 Remove the metal cover and fully insert the WiFi module into the installation bay. (Follow the arrow annotation for directions.)

2 Secure the cover with screws. Make sure the antenna screw-on stud is positioned and exposed properly.

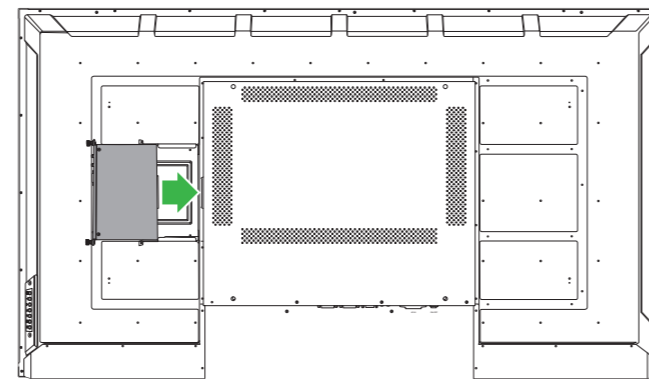
3 Attach the external antenna securely to the screw-on stud.



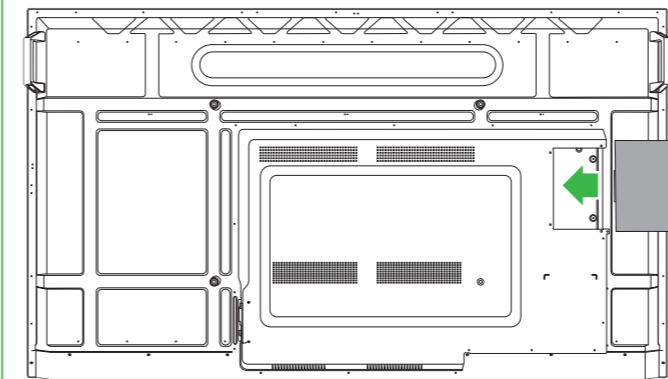
## 8 Installing the OPS Module

Slide the OPS module into the OPS slot.

DK433



DK553 / DK653 / DK753 / DK863



## Global Operation And Service



### Vivitek America

Vivitek Service Center  
14910 Summit Drive EASTVALE, CA. 92880  
U.S.A.  
Tel: 855-885-2378 (Toll-Free)  
Email: T.services1@vivitekc.com

### Vivitek Asia

7F, No. 186, Ruey Kuang Road, Neihu, Taipei 11491  
Taiwan R.O.C.  
T: +886-2-8797-2088  
F: +886-2-6600-2358

### Vivitek Europe

Zandsteen 15, 2132 MZ Hoofddorp The  
Netherlands  
T: +31-20-800-3960  
F: +31-20-655-0999

### Delta Electronics Europe Ltd

1 Redwood Court East Kilbride Glasgow G74 5PF  
United Kingdom