

Quick Start Guide



NovoDisplay
DKxx3 Series

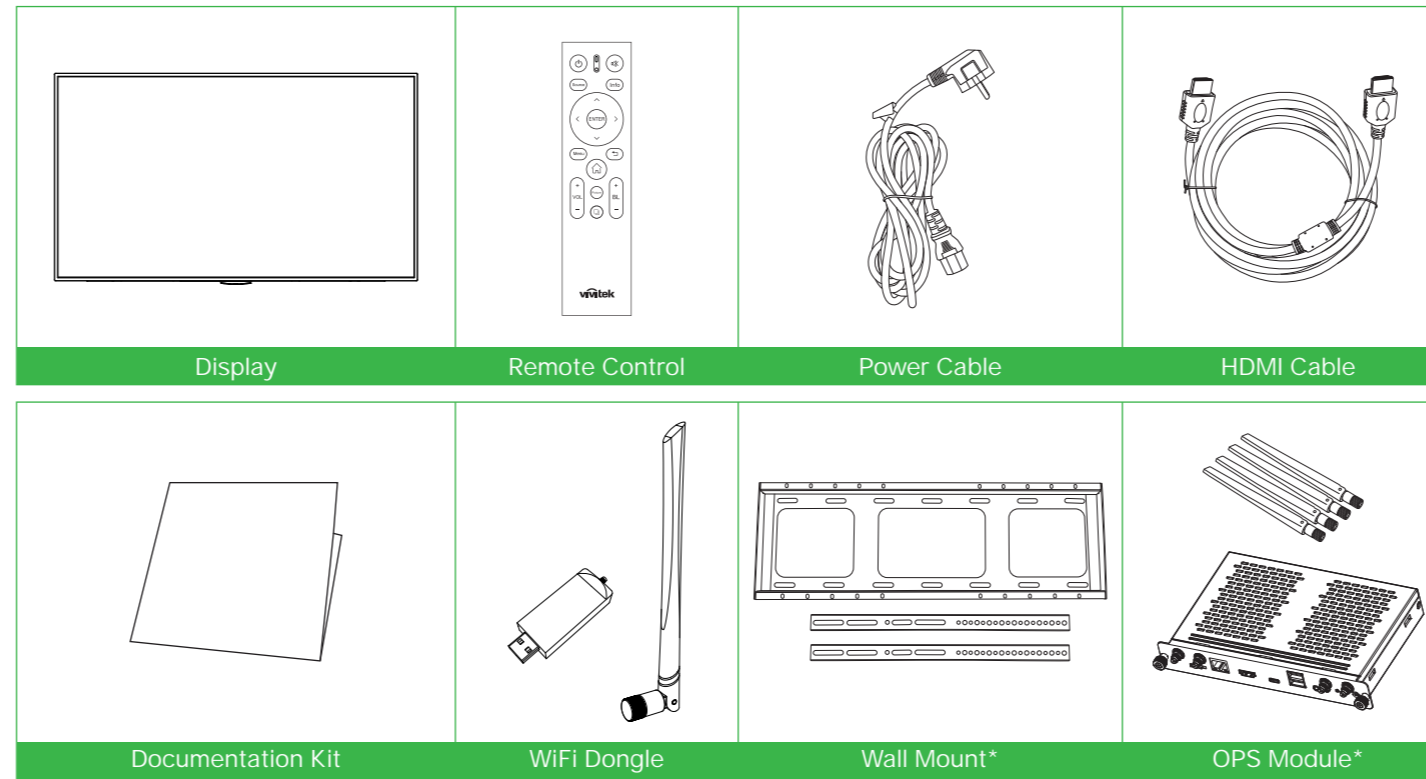


www.vivitekcorp.com

© 2022 Vivitek. Vivitek is a trademark of Delta Electronics, Inc. Other trademarks are the properties of their respective owners. Values, weights and dimensions shown are approximate. Errors and omissions accepted. Specifications are subject to change without prior notice.

A brand of DELTA

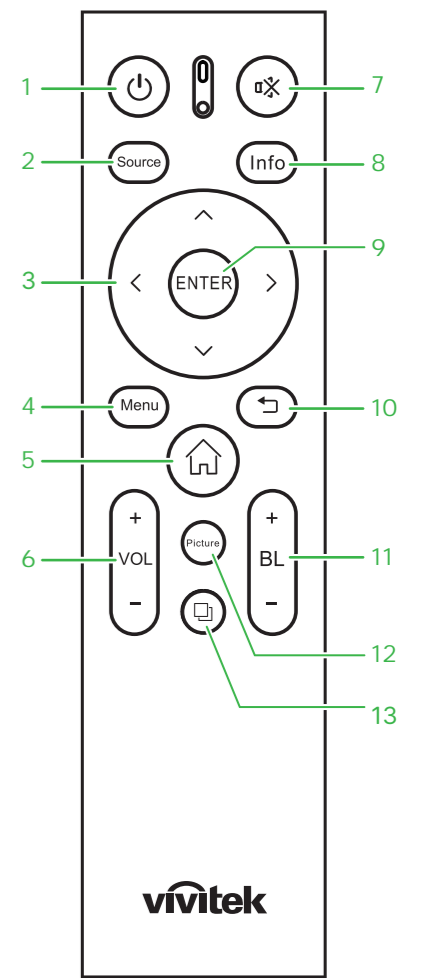
1 Package Contents



*OPS Module is an optional accessory.
*Wall mount is an optional accessory.

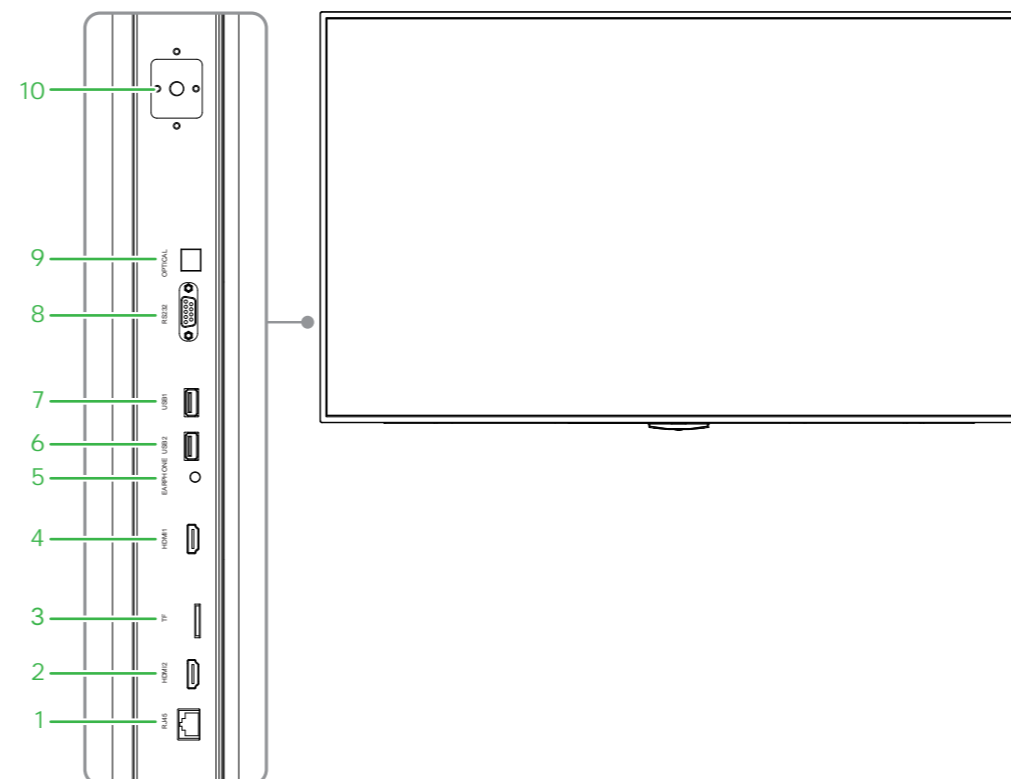
2 Remote Control

- 1 Power
- 2 Input Source
- 3 Navigation Buttons
- 4 Menu
- 5 Home
- 6 Volume +/-
- 7 Mute
- 8 Display Information
- 9 Enter
- 10 Back
- 11 Backlight +/-
- 12 Display mode
- 13 Recent apps



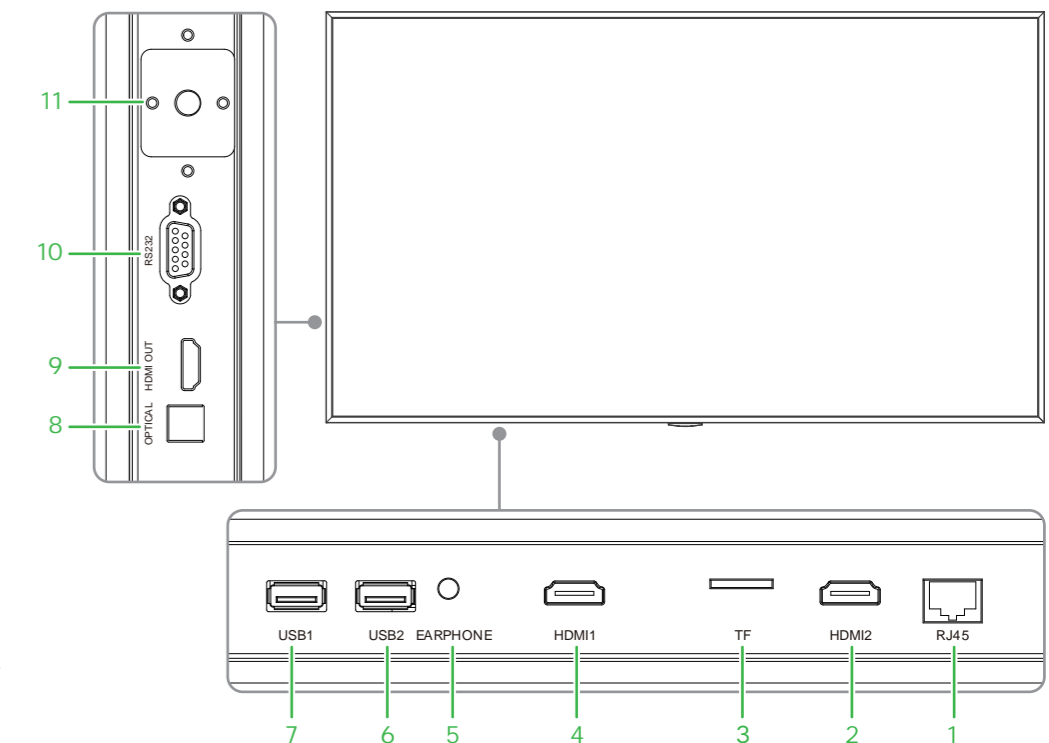
3 DK433 IO Ports

- 1 LAN Port
- 2 HDMI In Port 2
- 3 TF Card Slot
- 4 HDMI In Port 1
- 5 Audio Out
- 6 USB 2
- 7 USB 1
- 8 RS-232
- 9 Optical Port
- 10 HDMI Out
- 11 WiFi Dongle Slot

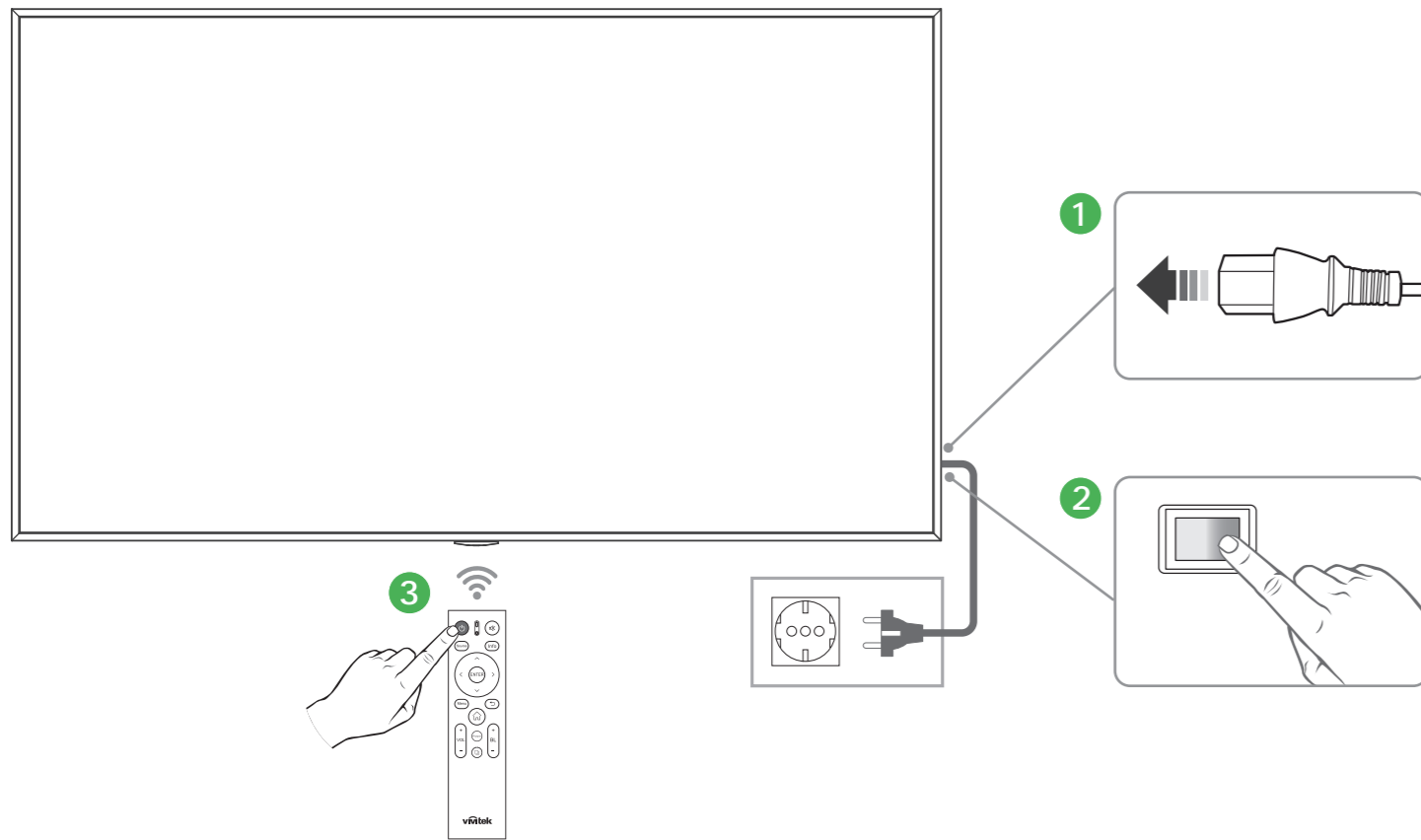


4 DK553 / DK653 / DK753 / DK863 IO Ports

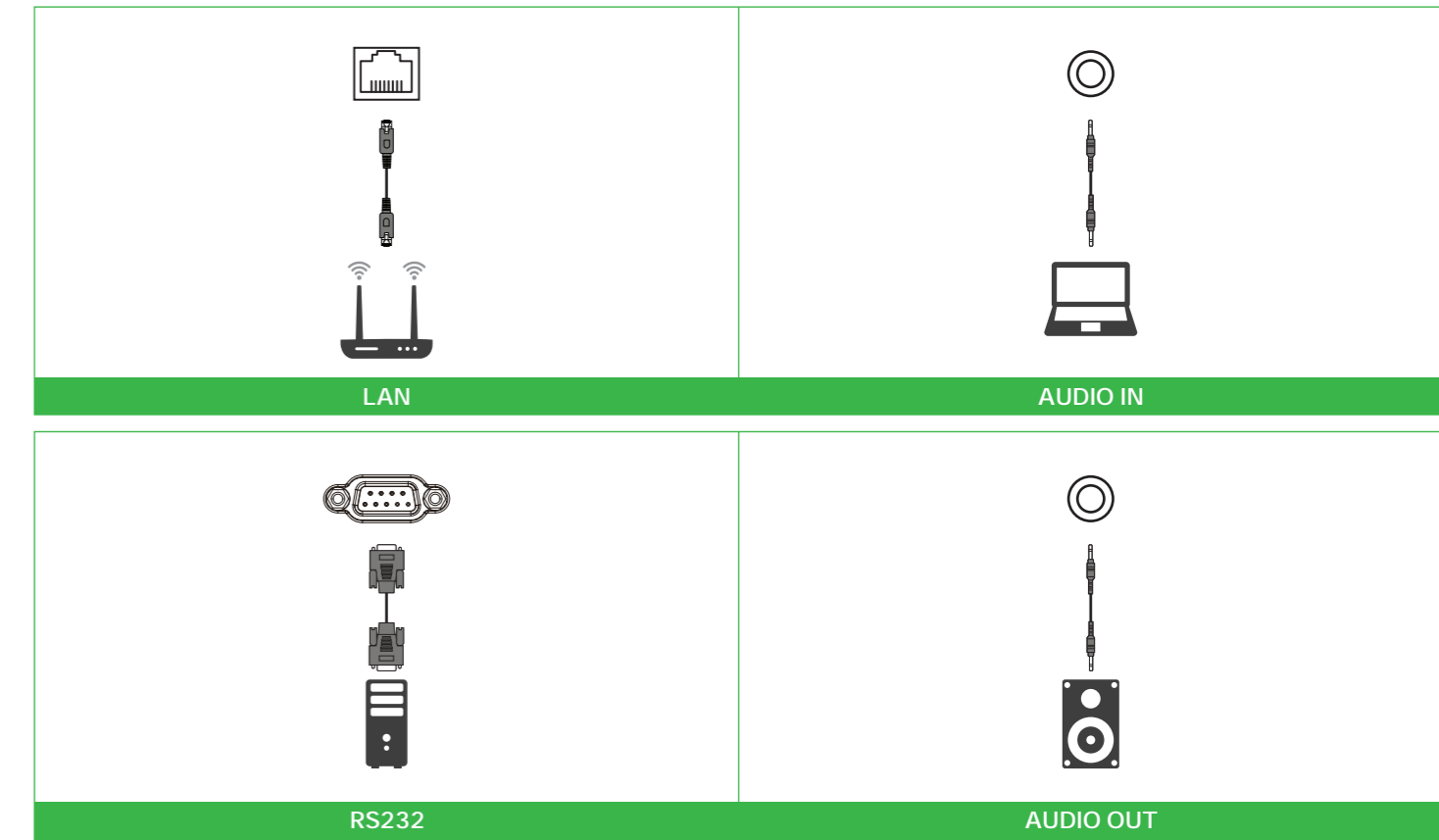
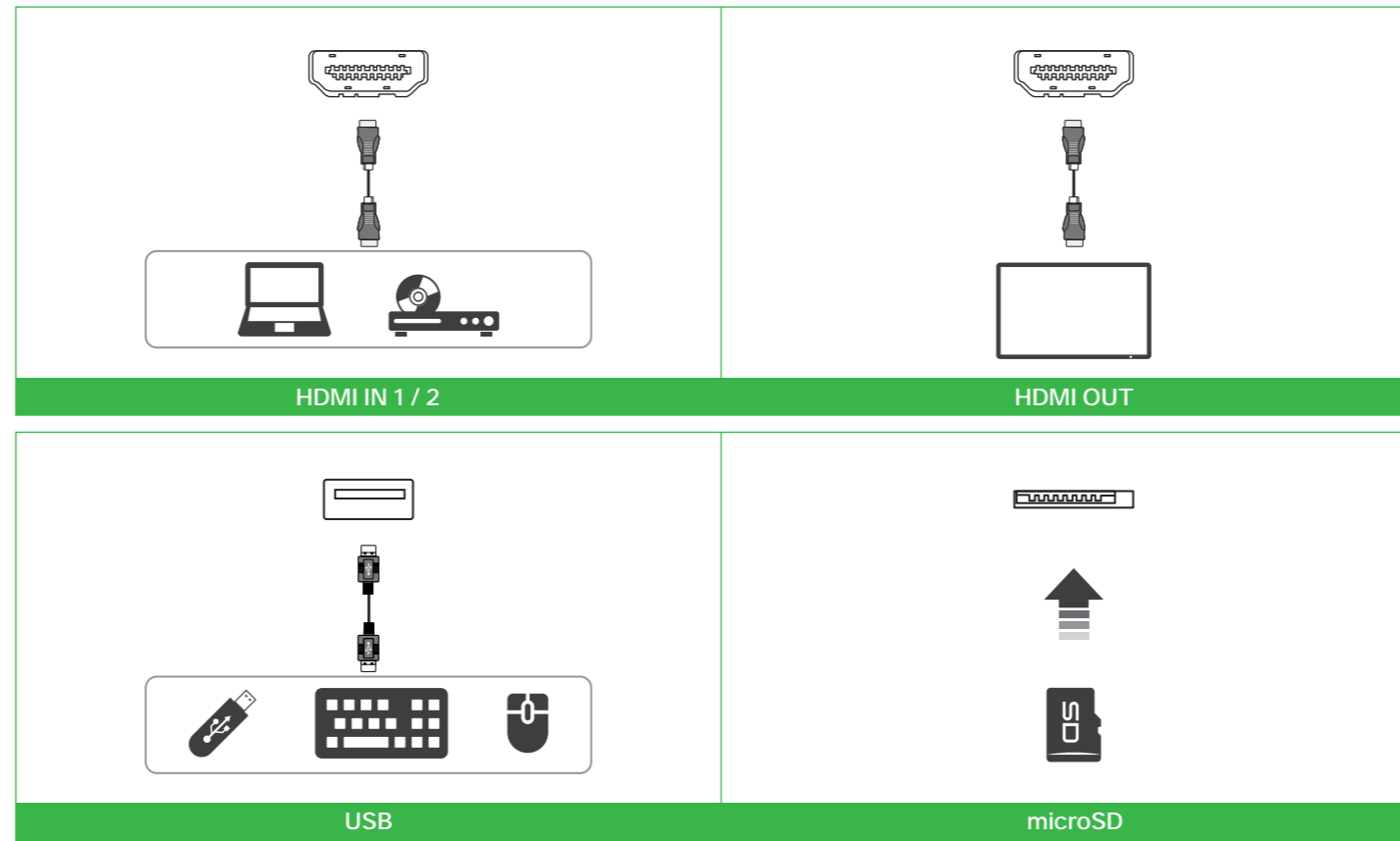
- 1 LAN Port
- 2 HDMI In Port 2
- 3 TF Card Slot
- 4 HDMI In Port 1
- 5 Audio Out
- 6 USB 2
- 7 USB 1
- 8 Optical Port
- 9 HDMI Out
- 10 RS-232
- 11 WiFi Dongle Slot



5 Display Overview (Front)



6 Connections

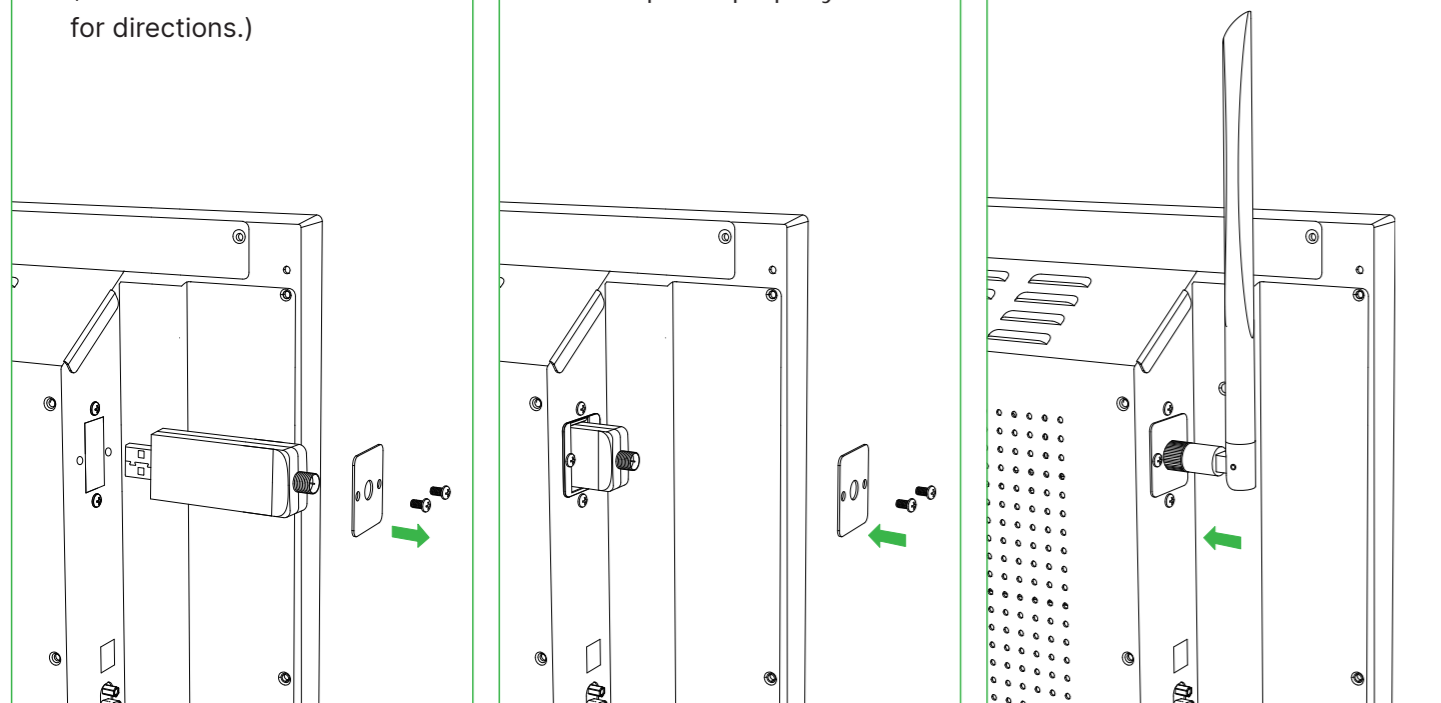


7 Getting Started

1 Remove the metal cover and fully insert the WiFi module into the installation bay. (Follow the arrow annotation for directions.)

2 Secure the cover with screws. Make sure the antenna screw-on stud is positioned and exposed properly.

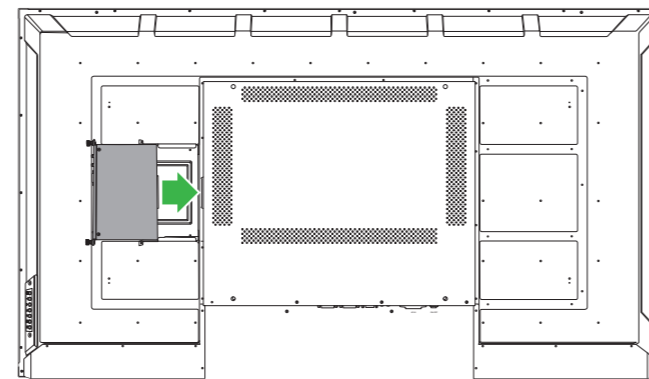
3 Attach the external antenna securely to the screw-on stud.



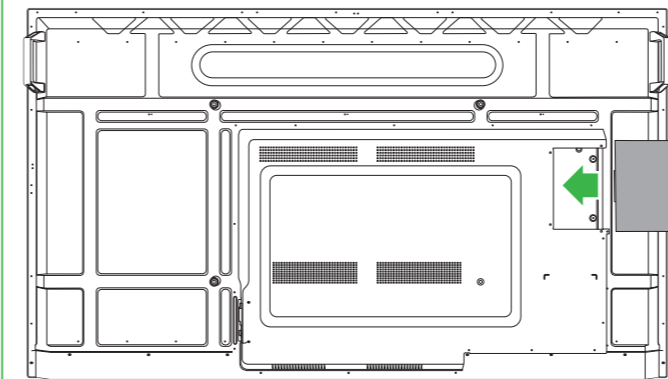
8 Installing the OPS Module

Slide the OPS module into the OPS slot.

DK433



DK553 / DK653 / DK753 / DK863



Global Operation And Service



Vivitek America

Vivitek Service Center
14910 Summit Drive EASTVALE, CA. 92880
U.S.A.
Tel: 855-885-2378 (Toll-Free)
Email: T.services1@vivitekcorp.com

Vivitek Asia

7F, No. 186, Ruey Kuang Road, Neihu, Taipei 11491
Taiwan R.O.C.
T: +886-2-8797-2088
F: +886-2-6600-2358

Vivitek Europe

Zandsteen 15, 2132 MZ Hoofddorp The
Netherlands
T: +31-20-800-3960
F: +31-20-655-0999

Delta Electronics Europe Ltd

1 Redwood Court East Kilbride Glasgow G74 5PF
United Kingdom