

# Dell Performance Dock

WD19DC

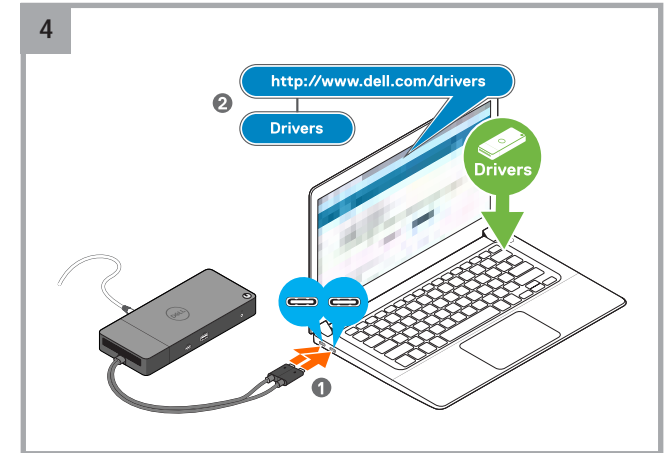
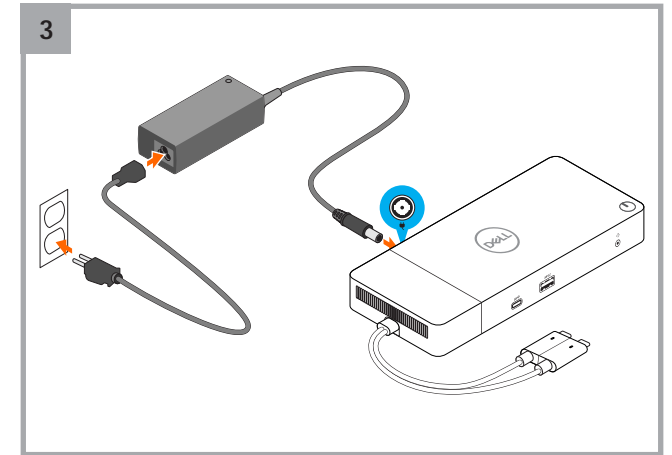
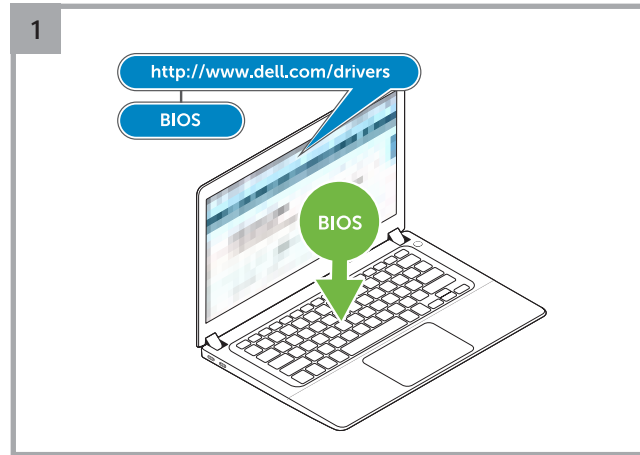
## Quick Start Guide

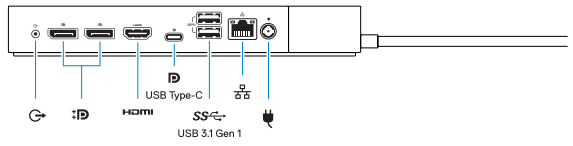
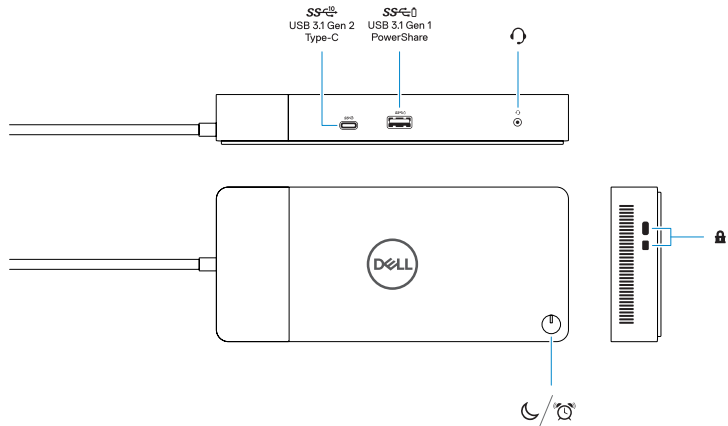
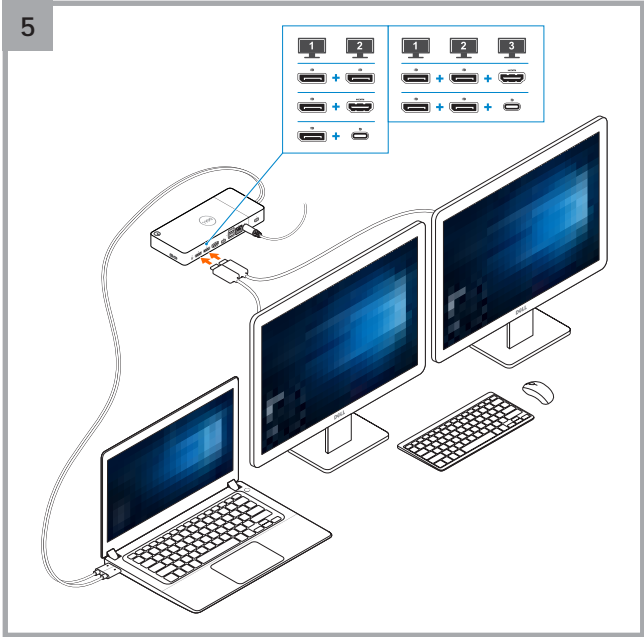
### Important

You must update your computer's BIOS and the Dell Performance Dock WD19DC drivers to the latest versions available at [www.dell.com/support](http://www.dell.com/support) before using the Dock.

Older BIOS versions and drivers could result in the Dell Performance Dock WD19DC not being recognized by your computer or not functioning optimally.

For more information, please refer to the User Guide.





[www.dell.com/support](http://www.dell.com/support)  
[www.dell.com/support/drivers](http://www.dell.com/support/drivers)  
[www.dell.com/contactdell](http://www.dell.com/contactdell)  
[www.dell.com/regulatory\\_compliance](http://www.dell.com/regulatory_compliance)

**Regulatory model** K20A  
 管制型号 | 安規型號  
 認可モデル | 규정 모델  
**Regulatory type** K20A001  
 管制类型 | 安規類型  
 認可タイプ | 규정 유형

**Información para NOM, o Norma Oficial Mexicana**

La información que se proporciona a continuación se mostrará en los dispositivos que se describen en este documento, en conformidad con los requisitos de la Norma Oficial Mexicana (NOM):

**Importador:**

Dell México, S.A. de C.V  
 Av. Javier Barros Sierra, No 540, Piso 10  
 Col. Lomas de Santa Fe Delegación Álvaro Obregón  
 Ciudad de México, C.P. 01219  
 R.F.C: DME9204099R6

Modelo	K20A
Voltaje de alimentación	100 V CA–240 V CA
Frecuencia	50 Hz–60 Hz
Consumo de corriente de entrada	3,5 A
Voltaje de salida	19.5 V CC
Consumo de corriente de salida	12,3 A/12,31 A

商品名稱:	電腦擴充底座
型號:	WD19DC (K20A)
額定電壓:	100 - 240 伏特
額定頻率:	50 - 60 赫茲
額定輸入電流:	3.5 安培
製造年份:	參考外箱標示或條碼標籤
製造號碼:	參考外箱條碼標籤
生產國別:	參考外箱標示
注意事項:	參考使用手冊
產品功能:	參考使用手冊
緊急處理方法:	參考使用手冊
進口商/委製商:	荷蘭商戴爾企業股份有限公司台灣分公司
進口商/委製商地址:	台北市敦化南路二段 218 號 20 樓
進口商/委製商電話:	00801-861-011

本產品符合臺灣RoHS標準CNS15663, 請見  
[Dell.com/learn/tw/zh/twcorp1/envt-info-materials](http://Dell.com/learn/tw/zh/twcorp1/envt-info-materials)

**SS-C- USB Type-C 連接埠:** 讀寫 USB 3.1、5 V/3 A、5 Gbps  
**ID** 表示為1個具備電源供應與DisplayPort功能的 USB-C 3.1 (10Gbps, 5V/3A output)



OKCY5MA02



2019-08