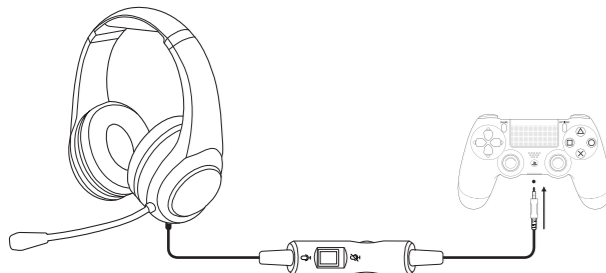


PS4™ SETUP



EN:

In order to hear the in-game audio through the headset, you must make sure that your ps4™ system is set-up as follows:

Settings > Devices > Audio Devices > Output to headphones > All audio

ADJUST THE HEADSET AUDIO LEVELS
The volume level of the headset and microphone can be adjusted within the ps4™ system menu as follows:

HEADSET VOLUME: Settings > Devices > Audio devices > Volume control (headphones)

MICROPHONE LEVEL: Settings > Devices > Audio devices > Adjust microphone level
(Adjust the microphone level until the indicator shows 'good')

FR:

Afin de pouvoir entendre le son du jeu dans votre casque, assurez vous que votre système PS4™ soit paramétré comme suit:

"Paramètres" > "Son et écran" > "Paramètres de sortie audio" > "Sortie vers le casques" > "Tout audio"

AJUSTEMENT DU NIVEAU SONORE DU SYSTÈME PS4™

Ajustement du niveau sonore du système PS4™ Le niveau sonore du casque peut être ajuster directement via les paramètres du système PS4™ comme suit:

" Paramètres " > " Périphériques " > " Périphériques audio " > " Volume Control (Headphones) "

VOLUME DU MICROPHONE: " Paramètres " > " Périphériques " > " Périphériques audio " > " Niveau du microphone " **(Ajuster le niveau du micro jusqu'à ce que l'indicateur indique "Good")**

DE:

Um den Ton des Spiels im Headset zu hören, müssen Sie sicherstellen, dass Ihre PS4™ wie folgt konfiguriert ist:

Einstellungen > "Ton und Bild" > "Audio Ausgabe Einstellungen" > "Ausgabe auf Kopfhörer" > "Alle Audiosignale"

ANPASSEN DER PS4™ LAUTSTÄRKE

Die Lautstärke des Headsets kann im PS4™ Menü wie folgt angepasst werden:

Kopfhörer-Datenträger: "Einstellungen" > "Sound und Display" > "Audio -Ausgangs-Einstellungen" > "Lautstärke (Kopfhörer)"

DEN MIKROFONPEGEL: "Einstellungen" > "Geräte" > "Audiogeräte" > "Mikrofonpegel"
(Justieren Sie den Mikrofonauschlag bis "Gut" angezeigt wird)

IT:

Al fine di poter sentire l'audio del gioco attraverso le cuffie assicuratevi che il sistema PS4™ sia configurato come segue:

"Impostazioni" > "Dispositivi" > "Dispositivi Audio" > "Uscita alle cuffie" > "Interamente audio"

REGOLAZIONE DEL LIVELLO DEL VOLUME DEL SISTEMA PS4™

Il livello del volume può essere regolato attraverso il Menu del sistema PS4™ come segue:

"Impostazioni" > "Dispositivi" > "Dispositivi Audio" > "Controllo Volume (Headphones)"

MICROFONO VOLUME: "Impostazioni" > "Dispositivi" > "Dispositivi Audio" > "Regolazione livello del microfono"
(Regola il livello del microfono finché l'indicatore segna "Buono")

ES:

Para poder escuchar el audio del juego en el Headset, debe asegurarse de que el Sistema PS4™ está configurado de la siguiente forma:

"Ajustes" > "Sonido y Pantalla" > "Ajustes de salida de audio" > "Salida a auriculares" > "Todo el audio"

AJUSTES DEL NIVEL DE VOLUMEN DEL SISTEMA PS4™

El nivel de volumen del Headset puede ajustarse desde el menú del Sistema PS4™ de la siguiente forma:

"Ajustes" > "Sonido y pantalla" > "Ajustes de salida de audio" > "Control de Volumen (Auriculares)"

VOLUMEN DEL MICROFONO: "Ajustes" > "Dispositivos" > "Dispositivos de audio" > "Nivel del microfono"
(Ajuste el nivel del Micrófono hasta que el indicador marque "Bien")

NL:

Om ervoor te zorgen dat je andere spelers kunt horen, moet je PS4™ systeem als volgt worden ingesteld:

"Instellingen" > "Apparaten" > "Audio apparaten" > "Uitgang naar koptelefoon" > "Alle Audio"

HET PS4™ SYSTEEM VOLUME AANPASSEN

Het geluid van de koptelefoon kan via het PS4™ systeem als volgt worden aangepast:

VOLUME VAN DE HOOFDTELEFOON

"Instellingen" > "Geluid en Scherm" > "Audio Output Instellingen" > "Volume beheer (koptelefoon)"

THE MICROPHONE LEVEL

"Instellingen" > "Geluid en Scherm" > "Audio Output Instellingen" > "Aanpassen microfoon level"
(Pas het microfoon niveau aan totdat er 'goed' verschijnt)

PT:

para ouvir o áudio do jogo através dos auscultadores, deve certificar-se de que o seu sistema ps4™ está configurado da seguinte forma:

'configurações' > 'dispositivos' > 'dispositivos de áudio' > 'saída para os auscultadores' > 'todo áudio'

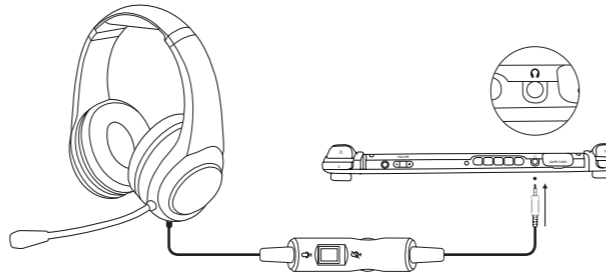
AJUSTAR OS NÍVEIS DE ÁUDIO DOS AUSCULTADORES

o nível de volume dos auscultadores e do microfone pode ser regulado no menu do sistema ps4™, como segue:

VOLUME DOS AUSCULTADORES: 'configurações' > 'dispositivos' > 'dispositivos de áudio' > 'controlo de volume' (auscultadores)

NÍVEL DO MICROFONE: 'configurações' > 'dispositivos' > 'dispositivos de áudio' > 'ajustar o nível do microfone' (ajustar o nível do microfone até que o indicador mostre 'bom')

NINTENDO SWITCH™ SETUP



EN:

Insert the headset's 3.5mm jack plug into your Nintendo Switch™ Console. The Headset should work upon connection. Chat available for games that support chat.

FR:

Branchez la prise Jack de 3,5 mm du casque sur la console Nintendo Switch™.

DE:

Verbinden Sie den 3,5-mm-Klinkenanschluss des Headsets mit der Nintendo Switch-Konsole.

IT:

Branchez la prise Jack de 3,5 mm du casque sur la console Nintendo Switch™.

ES:

Enchufe la clavija de conexión de 3,5 mm del casco a la consola Nintendo Switch™.

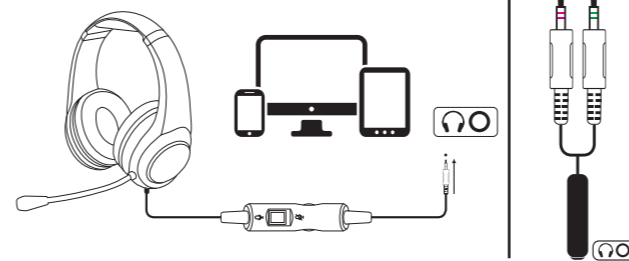
NL:

Sluit de aansluiting van 3,5 mm van de headset aan op de Nintendo Switch™-console

PT:

Inserir o conector de 3,5 mm dos auscultadores na consola da sua nintendo switch™.

PC / MOBILE & TABLET



EN:

Most new pc's have a single 3.5mm jack connection. Simply plug the 3.5mm jack from the headset directly into the port on your PC. The same applies when connecting to a mobile or tablet.

If your PC uses separate **Green/Pink** connectors you will need a PC Splitter Cable (**Sold Separately**)

FR:

La plupart des nouveaux PC ont une seule prise Jack de 3,5 mm. Branchez simplement la prise Jack de 3,5 mm du casque directement sur le port situé sur votre PC.

Si votre PC utilise des prises **verte/rose**, vous aurez besoin d'un câble diviseur pour PC (**vendu séparément**)

DE:

Die meisten neueren PCs verfügen über eine einfache 3,5-mm-Klinkenbuchse. Stecken Sie den 3,5-mm-Klinkenstecker des Headsets einfach direkt in den Anschluss an Ihrem PC.

Wenn Ihr PC mit separaten **grünen/rosa** Anschlüssen ausgestattet ist, benötigen Sie ein PC-Verteilerkabel (**separat erhältlich**)

IT:

La maggior parte dei nuovi PC dispone di un collegamento jack da 3,5 mm. È sufficiente inserire il collegamento jack da 3,5 mm dalle cuffie direttamente nella porta del PC.

Se il PC utilizza connettori **verde/rosa** distinti, sarà necessario un cavo sdoppiatore per PC (**venduto separatamente**)

ES:

La mayoría de los nuevos ordenadores tienen una única clavija de 3,5 mm. Simplemente enchufe la clavija de 3,5 mm del casco directamente al puerto del PC.

Si el PC usa conectores distintos **verde/rosa**, necesitará un cable bifurcado para PC (**se vende por separado**)

NL:

De meeste nieuwe pc's hebben een enkele aansluiting van 3,5 mm. Sluit de aansluiting van 3,5 mm van de headset rechtstreeks aan op de poort van uw pc.

Als uw pc afzonderlijke **groen/roze** connectoren heeft, hebt u een pc-splitterkabel nodig (**afzonderlijk verkrijgbaar**)

PT:

A maioria dos novos pc têm uma única ligação de conector de 3,5 mm. Basta ligar o conector de 3,5 mm dos auscultadores diretamente na porta do seu pc. O mesmo se aplica ao ligar a um telemóvel ou tablet.

se o seu pc tiver conectores **verde/rosa** separados, será necessário um cabo divisor de pc (**vendido em separado**)

Legal information

Please keep this instruction manual for future reference. If you require any help or assistance please contact the Helpline or **VISIT STEALTHGAMING.NET/SUPPORT**

Warranty

This product is guaranteed for a period of one year from the date of purchase. During this period if there is a defect due to faulty materials, or workmanship the retailer from whom you purchased it will replace it with the same or a similar model on production of your purchase receipt or proof of purchase. This guarantee does not cover defects arising from accidental damage, misuse or wear and tear, and is available only to the original purchaser of the product. This does not affect your statutory rights.



To prevent possible hearing damage, do not listen at high volume levels for long periods.

Precautions

- Ensure that the volume control is set to the minimum level before connecting the headset to your system
- Before wearing the headset, set the volume control to its minimum level then slowly increase until you reach your desired volume level
- Listening to your headset at its maximum level may cause damage to both the headset and your ears
- Long term exposure to loud music or other sounds in a headset may cause hearing damage. It is best to avoid very high volume levels when using a headset, especially for extended periods

Important Safeguards & Precautions

- Never expose to direct sunlight or wet weather conditions
- Do not expose the unit to splashing, dripping, rain or moisture. Do not immerse in liquid
- Do not expose to dust, high humidity, high temperatures or mechanical shock
- Avoid any unnecessary strain of the cable
- Do not carry the headset by its cable
- Do not use if the equipment is damaged
- Do not disassemble; there are no serviceable parts inside
- For external cleaning, use a soft, clean, damp cloth only. Use of detergents may damage the cabinet finish and leak inside

Recycling



Where you see this symbol on any of our electrical products, batteries or packaging, it indicates that the relevant electrical product or battery should not be disposed of as general household waste in the EU or Turkey. To ensure the correct waste treatment of the product and battery, please dispose of them in accordance with any applicable local laws or requirements for disposal of electrical equipment/batteries. In so doing, you will help to conserve natural resources and improve standards of environmental protection in treatment and disposal of electrical waste.

The recycling and processing of Waste Electrical and Electronic Equipment will make a significant contribution towards helping protect the environment by reducing landfill waste.

Not recommended for children under 6 years of age.

MADE IN CHINA



Marking of this symbol indicates this product has been tested and is compliant with the EMC Directive of the European Union 2014/30/EU.



Not recommended for children under 6 years of age. Please retain this packaging for future reference. Due to the company's policy of constant improvement and technical refinement, the company reserve the right to alter the specification. This product is not sponsored, endorsed or approved by Microsoft. XBOX ONE™ is a registered trademarks of Microsoft Co. Ltd. This product is not sponsored, endorsed or approved by Sony Interactive Entertainment. PS4™ is a registered trademarks of Sony Interactive Entertainment. This product is not sponsored, endorsed or approved by Nintendo. Nintendo Switch™ is a registered trademark of Nintendo Co. Ltd. Manufactured by ABP Technology Ltd. Bolton, BL2 1BX. MADE IN CHINA.

STEALTH



QUICK START GUIDE GUIDE DE DÉMARRAGE RAPIDE

STEALTHGAMING.NET/SUPPORT

F: STEALTHGAMING.NET / T: @STEALTHGAMENET / I: STEALTHGAMING.NET

HAVING TROUBLE SETTING UP? WE CAN HELP!

TECHNICAL SUPPORT QUESTIONS / SET UP / NOT WORKING?

ONLINE: STEALTHGAMING.NET/SUPPORT
EMAIL: HELP@ABPTECH.CO.UK
PHONE: +44(0)1204 369 237
MONDAY-THURSDAY 9AM to 5PM
FRIDAY 9AM to 4PM
(all calls charged at national rate)

**FR: VOUS RENCONTREZ DES DIFFICULTÉS DURANT
L'INSTALLATION DU PRODUIT? NOUS POUVONS VOUS AIDER!**
EN LIGNE: STEALTHGAMING.NET/SUPPORT
EMAIL: HELP@ABPTECH.CO.UK (ONL D'EXPRESSION ANGLAISE)

IT: HAI PROBLEMI DI INSTALLAZIONE? POSSIAMO AIUTARTI!
ONLINE: STEALTHGAMING.NET/SUPPORT
EMAIL: HELP@ABPTECH.CO.UK (ONL ANGLOFONO)

DE: PROBLEME BEIM AUFBAU? WIR HELFEN IHNEN WEITER!
ONLINE: STEALTHGAMING.NET/SUPPORT
E-MAIL: HELP@ABPTECH.CO.UK (ENGLISCH SPRECHENDES ONL)

ES: ¿PROBLEMAS CON LA CONFIGURACIÓN? ¡PODEMOS AYUDARLE!
EN LÍNEA: STEALTHGAMING.NET/SUPPORT
CORREO ELECTRÓNICO: HELP@ABPTECH.CO.UK (ONL DE HABLA INGLESA)

NL: PROBLEMEN BIJ HET INSTELLEN? WIJ HELPEN U WEL!
ONLINE: STEALTHGAMING.NET/SUPPORT
E-MAIL: HELP@ABPTECH.CO.UK (ENGELSTALIGE ONL)

PT: ESTÁ A TER PROBLEMAS EM CONFIGURAR?
ONLINE: STEALTHGAMING.NET/SUPPORT
E-MAIL: HELP@ABPTECH.CO.UK (ATENDIMENTO APENAS EM INGLÊS)

**HAPPY WITH YOUR PRODUCT?
DON'T FORGET TO LEAVE A REVIEW ON THE RETAILER
WEBSITE OR OUR FACEBOOK PAGE...**

PACKAGE CONTENTS



1: HEADSET
2: DETACHABLE MICROPHONE

CONTROLS

1: MICROPHONE SWITCH

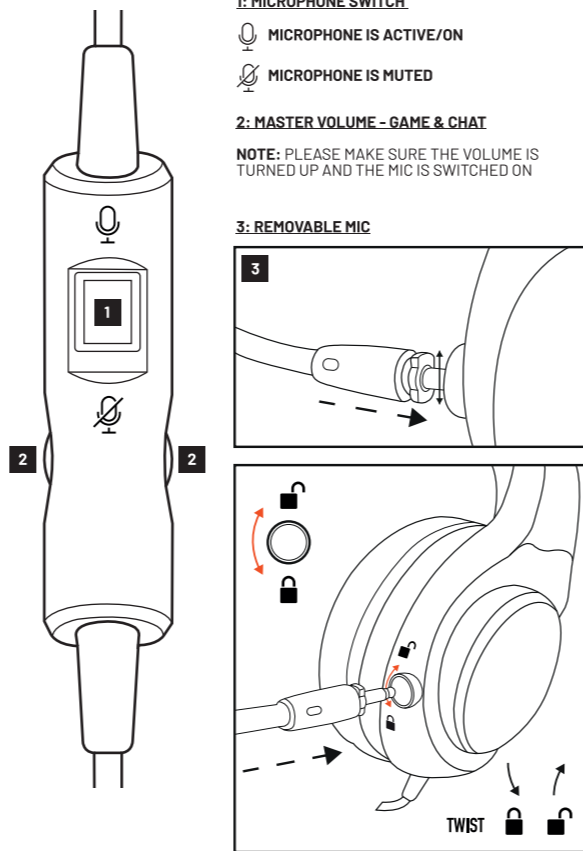
MICROPHONE IS ACTIVE/ON

MICROPHONE IS MUTED

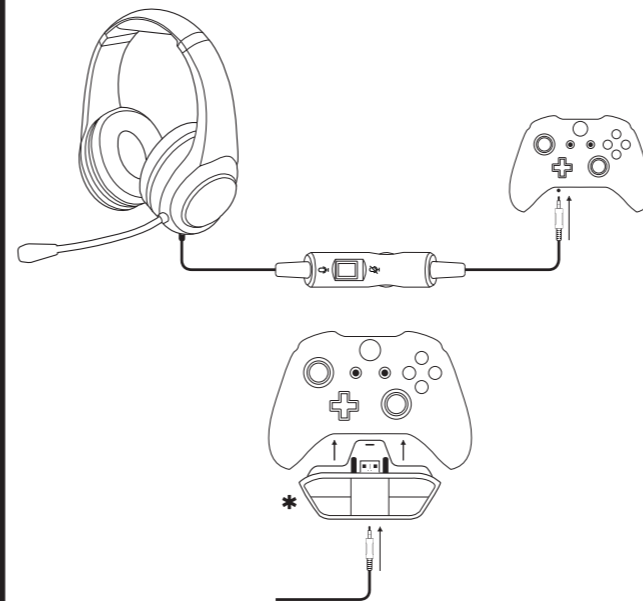
2: MASTER VOLUME - GAME & CHAT

NOTE: PLEASE MAKE SURE THE VOLUME IS
TURNED UP AND THE MIC IS SWITCHED ON

3: REMOVABLE MIC



XBOX ONE™ SETUP



NOTE: IF YOU ARE USING AN ORIGINAL XBOX ONE™ CONTROLLER YOU WILL
REQUIRE THE *XBOX ONE STEREO HEADSET ADAPTER (SOLD SEPARATELY)

NOTE: *SI VOUS UTILISEZ UNE MANETTE D'ORIGINE XBOX™, VOUS AUREZ BESOIN
D'UN ADAPTATEUR DE CASQUE DE JEU STÉRÉO XBOX ONE™
(VENDU SÉPARÉMENT)

XBOX ONE™ SETUP HEADSET CHAT MIXER

EN:

- 1: Press the XBOX button on your controller
- 2: Go to the System tab
- 3: Select Audio
- 4: Ensure the headset Mic is turned on
- 5: Set the Headset Volume to maximum
- 6: Set the Headset Chat Mixer to the middle
- 7: Set the Mic Monitoring to your desired level

DE:

- 1: Drücke die Xbox-Taste deines Controllers
- 2: Navigiere zum Systemreiter
- 3: Wähle Audio
- 4: Stellen Sie sicher, dass das Headset-Mikrofon eingeschaltet ist
- 5: Stelle die Headset-Lautstärke auf des Maximum ein
- 6: Stelle die Chat-Abmischung des Headsets auf den mittleren Wert ein
- 7: Stelle den Mikromonitor auf deine bevorzugte Lautstärke ein

ES:

- 1: Pulsa el botón de Xbox en el mando
- 2: Ve a la pestaña Sistema
- 3: Selecciona Sonido
- 4: Asegúrese de que el micrófono del auricular esté encendido
- 5: Configura el volumen de los auriculares al máximo
- 6: Configura el mezclador de chat de los auriculares a la configuración intermedia
- 7: Configura el monitor de micrófono a tu nivel preferido

PT:

- 1: Premir o Botão Xbox no comando
- 2: Selecionar o separador Sistema
- 3: Selecionar Audio
- 4: Verifique se o microfone do fone de ouvido está ligado
- 5: Colocar o volume dos auscultadores no máximo
- 6: Configurar o editor de som do chat dos auscultadores para a definição do meio
- 7: Colocar a monitorização de microfone no nível desejado

FR:

- 1: Appuyez sur le bouton XBOX de votre manette
- 2: Accédez à l'onglet Système
- 3: Sélectionnez Audio
- 4: Assurez-vous que le micro du casque est activé
- 5: Réglez le volume du casque au maximum
- 6: Réglez le mélangeur de tchat du casque au milieu
- 7: Réglez le contrôle du micro au niveau souhaité

IT:

- 1: Premi il pulsante Xbox sul controller
- 2: Seleziona Sistema
- 3: Seleziona Audio
- 4: Assicurarsi che il microfono delle cuffie sia acceso
- 5: Imposta il volume delle cuffie al massimo
- 6: Configura il mixer per la chat delle cuffie al valore medio
- 7: Impostare il controllo microfono sul livello preferito

NL:

- 1: Druk op de Xbox-knop op je controller
- 2: Ga naar het tabblad System
- 3: Selecteer Audio
- 4: Zorg ervoor dat de Headset Mic is ingeschakeld
- 5: Stel Headset Volume in op Maximum
- 6: Stel Headset Chat Mixer in op de middelste instelling
- 7: Stel Mic Monitoring in op je gewenste niveau

XBOX ONE™ SETUP SURROUND SOUND

EN:

- 1: Press the XBOX button on your controller
- 2: Go to the System tab
- 3: Select Settings > Display & Sound > Audio Output
- 4: Select headset to Windows Sonic for Headphones

FR:

- 1: Appuyez sur la touche Xbox de votre manette
- 2: Accédez à l'onglet Système
- 3: Ouvrez Paramètres > Affichage et son > Sortie audio
- 4: Paramétrez le format de casque sur Windows Sonic pour casque

DE:

- 1: Drücke die Xbox-Taste deines Controllers
- 2: Navigiere zum Systemreiter
- 3: Wähle Einstellungen > Anzeige & Sound > Audioausgabe
- 4: Wähle als Headset-Format "Windows Sonic for Headphones"

IT:

- 1: Premi il pulsante Xbox sul controller
- 2: Seleziona Sistema
- 3: Impostazioni > Schermo e audio > Uscita audio
- 4: Imposta il formato su Windows Sonic per cuffie

ES:

- 1: Pulsa el botón de Xbox en el mando
- 2: Ve a la pestaña Sistema
- 3: Selecciona Configuración > Pantalla y sonido > Salida de sonido
- 4: Configura el formato de los auriculares a Windows Sonic para auriculares

NL:

- 1: Druk op de Xbox-knop op je controller
- 2: Ga naar het tabblad System
- 3: Selecteer Settings > Display & Sound > Audio Output
- 4: Stel Headset format in op Windows Sonic for Headphones

PT:

- 1: Premir o Botão Xbox no comando
- 2: Selecionar o separador Sistema
- 3: Selecionar Definições > Imagem e Som > Saída de Audio
- 4: Configurar o formato dos auscultadores em Windows Sonic para auscultadores