



SSD technology



USB-C® 3.2 Gen 2



Large capacity



Compact Design

## Touchscreen control

The Verbatim Vx500 External SSD uses high speed flash memory and a USB 3.2 Generation 2 controller, optimised to provide unparalleled performance.

Storing, moving and backing up large amounts of digital data can be time consuming and hard work. With transfer speeds of up to 500 MB/s\* even high resolution video files can be moved in seconds. The Vx500's enhanced performance makes it ideal for running virtual machines on your computer.

Made from space grey aluminium and weighing just 29 grams, the Vx500 External SSD has a very sleek and sophisticated look and feel. Although small in physical size, it has some serious storage space - available in capacities of up to 2TB, it is the perfect accessory for Ultrabook's with limited on-board storage.

# Vx500

## External SSD

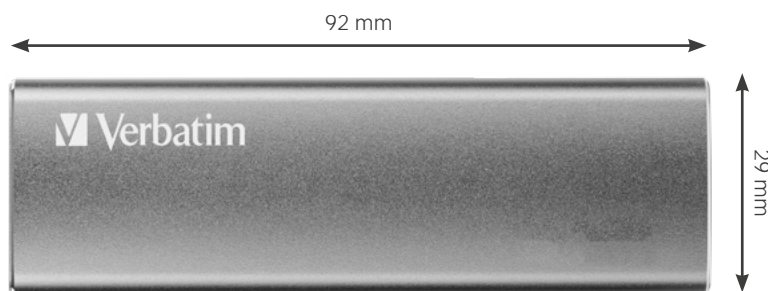
### USB 3.2 Gen 2

#### General Information

Product dimensions LxWxD	92x29x9mm
Product weight	29 grams
Material	Aluminium
Colour	Silver

#### Connection

Interface	USB-C®
Protocol	USB 3.2 Gen2
Power	Powered via USB 3.0 cable
Data Transfer Rate	up to 10 000 Mb/sec (USB Bus Speed)* *For optimal performance use a USB-C cable and USB 3.2 GEN 2 or Thunderbolt™ 3 host port. Transfer speeds based on internal data using UASP and BOT mode. Write speed dependent upon product capacity.



Vx500 External SSD real size

# Vx500

## External SSD

### USB 3.2 Gen 2

PN	Description	Bar Code	EAN128 Code	EAN14 Code
47441	Vx500 External Solid State Drive 120GB	0 23942 47441 8	(02) 00 023942 47441 8 3702 9197	50023942 47441 8
47442	Vx500 External Solid State Drive 240GB	0 23942 47442 5	(02) 00 023942 47442 5 3702 9197	50023942 47442 0
47443	Vx500 External Solid State Drive 480GB	0 23942 47443 2	(02) 00 023942 47443 2 3702 9197	50023942 47443 7
47444	Vx500 External Solid State Drive 1TB	0 23942 47444 9	(02) 00 02394247444 9 3702 91802	50023942 47444 4
47454	Vx500 External Solid State Drive 2TB	0 23942 47454 8	(02) 00 023942 47454 8 3702 91802	50023942 47454 3

#### Logistic Information

Pack Dimensions L x W x H	180x90x30mm
Pack Weight	82
Units per Pack	1
Outer Carton Dimensions L x W x H	70x195x70mm
Outer Cartons Weight	180
Units per Outer Carton	2
Outer Cartons per Layer	120
Layers per Pallet	6
Outer Boxes per pallet	720
Units per Pallet	1440

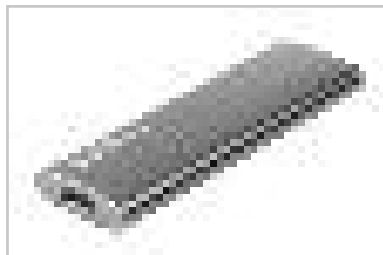
# Vx500

## External SSD

### USB 3.2 Gen 2



Top



Angled



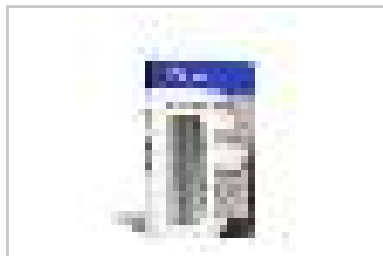
47441 Packaging 3D



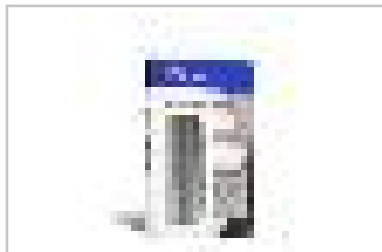
47442 Packaging 3D



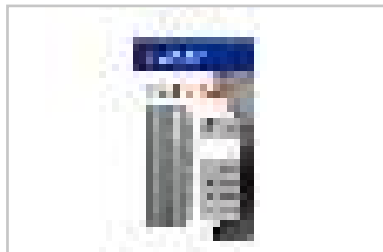
47443 Packaging 3D



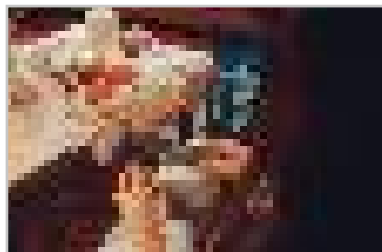
47444 Packaging 3D



47454 Packaging 3D



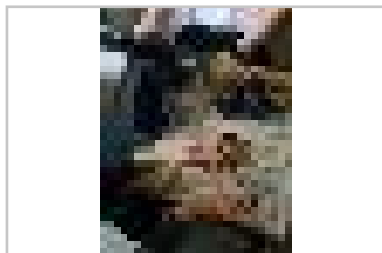
47454 Packaging Flat



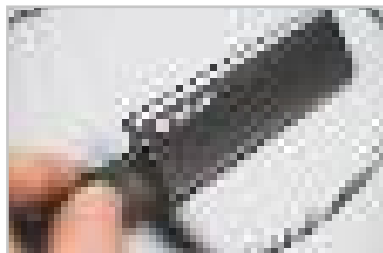
Lifestyle 1



Lifestyle 2



Lifestyle 5



Lifestyle 4

#### Pack Contents:

- Vx500 External Solid State Drive
- USB-C to USB-A Cable
- USB-A to USB-C Adapter
- Nero Backup Software (compatible only with Windows)

#### System Requirements

- USB 3.2 Gen 2 host port (backwards compatible with USB Gen 1 & USB 2.0)
- Windows 11, 10, 8 or higher
- Mac OS X 10.4 or higher

#### Warranty

- 2 year limited warranty