



JLAB AUDIO  
JBuddies Studio 2  
WIRELESS HEADPHONES

We love that you are rocking JLab!  
We take pride in our products and fully stand behind them.



### YOUR WARRANTY

All warranty claims are subject to JLab authorization and at our sole discretion. Retain your proof of purchase to ensure warranty coverage.



### CONTACT US

Reach out to us at [support@jlab.com](mailto:support@jlab.com) or visit [jlab.com/contact](http://jlab.com/contact)

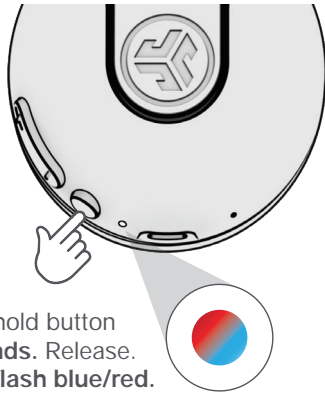
## REGISTER TODAY

[jlab.com/register](http://jlab.com/register)

Product updates | How-to tips  
FAQs & more

## BLUETOOTH

1



Press and hold button for **8 seconds**. Release. Lights will flash **blue/red**.

2

Enter your Bluetooth device settings and select JLab JBuddies Studio 2.

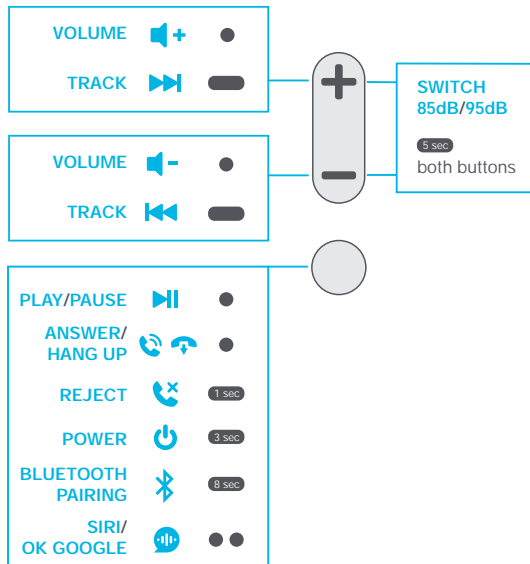


## CONTROLS

1x Press ●

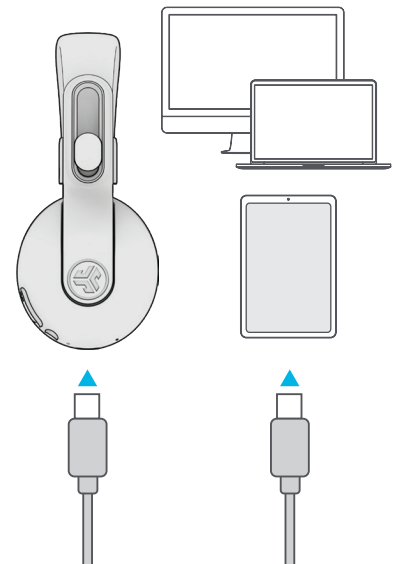
2x Press ●●

Press Hold ■■

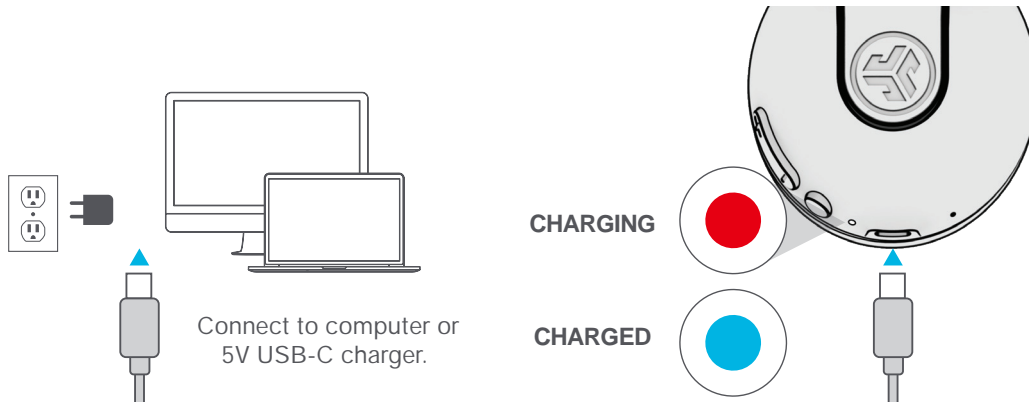


### GO WIRED

Connect USB-C cable to computer/tablet/phone for wired mode.

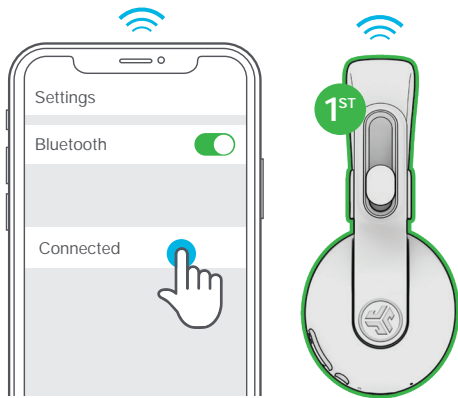


## CHARGING

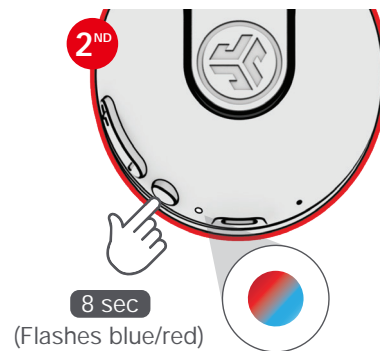


## SHARE MODE (SHARE BETWEEN TWO JBUDDIES STUDIO 2 WIRELESS HEADPHONES)

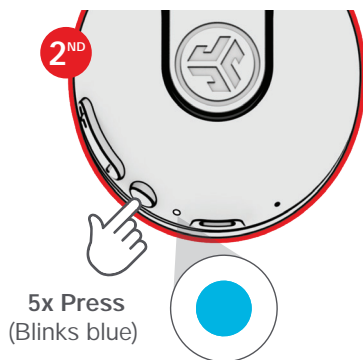
- 1 Connect **FIRST** headphone to device.



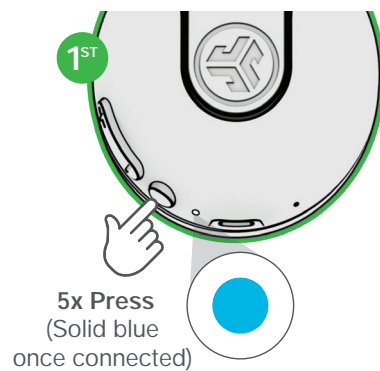
- 2 **SECOND** headphone should be power off.  
Press hold until flashing blue/red.



- 3 **SECOND** headphone 5x Press and blinks blue.



- 4 **FIRST** headphone 5x Press to share.



[Shop products](#) | [Product alerts](#) | [Burn-in your headphones](#)

JLab Audio + Burn-in Tool

