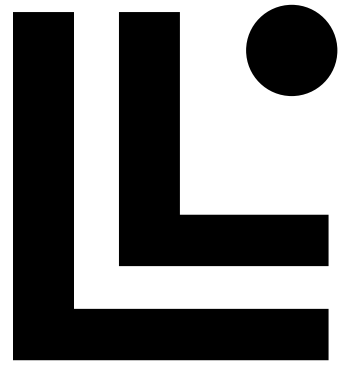


# Linksys®



Cognitive™ Mesh



## Simple, seamless and speedy.

Quicker setup. Smooth compatibility.  
Ultra-fast performance on multiple devices.  
Cognitive™ Mesh gives you the best  
all-around experience—all the time

**Velop® Pro 6E**  
Mesh **WiFi 6E** True Tri-Band System

**200 devices**  
Capacity per system

True Tri-Band  
**AXE5400**  
up to 5.4 Gbps

1 node covers homes  
with up to  
**1-3 bedrooms**  
or 1 floor\*

# WiFi 6E speed.

WiFi 6E offers an extra 6GHz band connection that helps cut down on interference and improves speeds to your connected devices.

Connect on time, every single time.

2.4 GHz 5 GHz 6 GHz

## Velop Pro 6E



Model#  
MX6200  
MX6201  
MX6202  
MX6203

### Industry-leading technology .

The Qualcomm Immersive Home 316 Platform delivers the ultimate WiFi 6 experience.

This next-gen technology evolves home and business WiFi with wire-like stability and beyond-fast performance.

Qualcomm  
immersive home  
316 platform

Wi-Fi 6E

### WiFi 6E Speed\*.

WiFi 6E offers an extra 6GHz band connection that helps cut down on interference and improves speeds to your connected devices.

### Cognitive™ Mesh.

Linksys Cognitive™ Mesh figures everything out for you by making continuous optimisations that improve your connectivity across all your devices.

### Smarter everyday.

Linksys Cognitive™ Mesh continuously optimises your connection to all your devices. The network is monitored regularly for node and client experience.

### Easy-Peasy Setup.

Set up 3 nodes in under 10 minutes and access your network on the Linksys Mobile App. Easily prioritise connected devices as you need.

### Privacy.

Linksys does not track your app usage or online activity, our products and apps don't use tracking cookies, and we don't share or sell your data for marketing purposes.

**Quality of Service (QoS)** is used to set up priority to specific devices, services or applications within the network through the router so that the maximum amount of available throughput and speed can be used.

### Linksys Cognitive support.

If the issue can't be solved via the app, Linksys support can remote in.

Retail packaging.



at a glance.

- Cognitive™ Mesh for better coverage and an optimised experience.
- WiFi 6E means higher speeds available for working and streaming.
- Access to higher MHz channels means more power and a stronger connection.
- Qualcomm™ Immersive Home 216 Platform chipset inside for nextgen wire-like stability and performance.
- Easy setup in minutes & control through the Linksys App.
- 24/7 customer support worldwide & 3-year warranty.

Linksys Velop Pro 6E with Cognitive™ Mesh delivers WiFi 6E with unmatched range\*, reaching 3,000 square feet each and up to 200 devices per system.

Stream, download or work with a faster connection, wider coverage and more devices on your network. Multiple users shouldn't equal a slower network. It takes care of the heavy lifting so you can focus on the connections that matter most.

WiFi 6E offers an extra 6GHz band connection that helps cut down on interference and improves speeds to your connected devices.

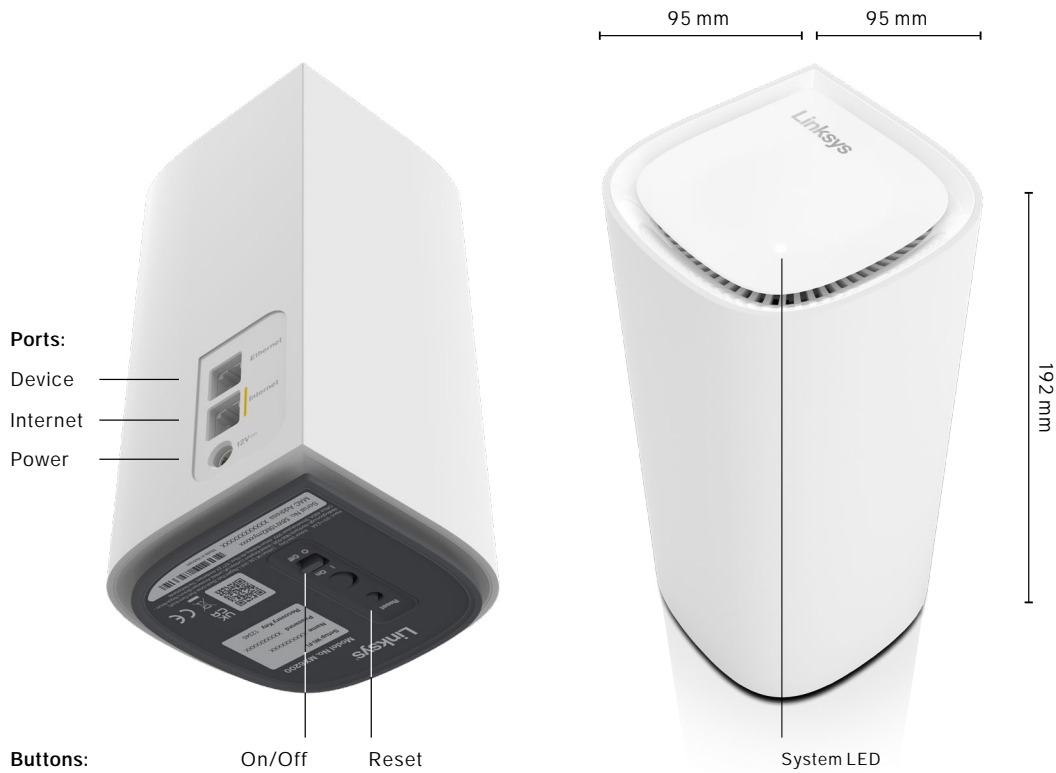
An advanced Qualcomm™ chipset delivers the ultimate WiFi 6E experience. Qualcomm® Immersive Home 316 Platform blends innovative mesh capabilities with advanced WiFi 6E features.

With advanced WPA3 security, automatic security updates, a secure admin password after setup and a separate guest network, your WiFi stays safe.

Privacy shouldn't be optional. Linksys does not track your app usage or online activity, our products and apps don't use tracking cookies, and we don't share or sell your data for marketing purposes.

And we've got your back with 24/7 customer support worldwide and 3-year warranty.

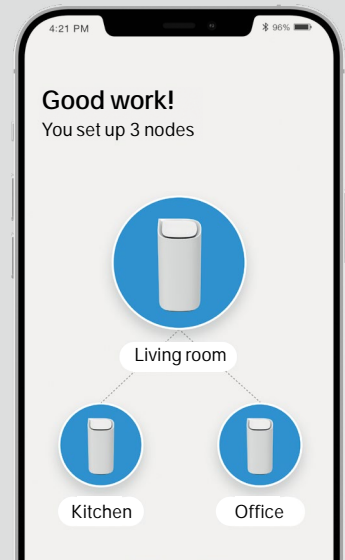
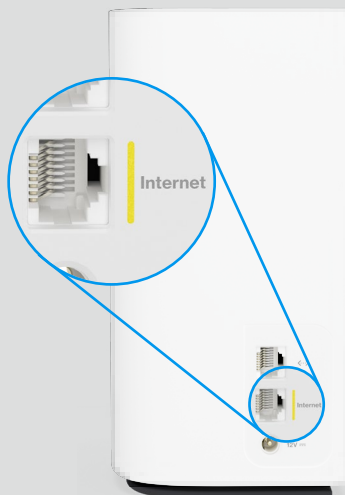
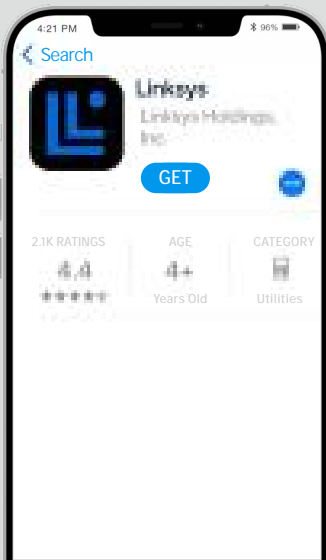
Product details.



# easy-peasy setup.

The Linksys App, your WiFi's new best friend. Set up in minutes and access your network on the Linksys Mobile App. Easily prioritise connected devices as you need. Download the free Linksys app to set up your network/device and manage it from anywhere. It's free. It's easy. And it's awesome.

- 1 Download and install the free Linksys app.
- 2 Connect one node to your modem (-router), plug in & switch on.
- 3 Open the app and let it guide you online in record time.

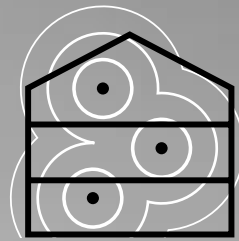


# Cognitive™ Mesh is better.

Introducing Linksys Cognitive™ Mesh technology: a smarter way to connect.

## Want superior WiFi? Easy.

Linksys Cognitive™ Mesh figures everything out for you by making continuous optimisations that improve your connectivity across all your devices.



### Improved setup

Deploy 3 nodes in under 10 minutes.

### Smarter everyday

Continuously optimises your connection.

### Application optimised

Get custom networks for streaming, gaming and video conferencing.

### Cognitive support

If the issue can't be solved via the app, Linksys support can remote in.

### Cognitive security

Advanced optimal security through the app.



Easily replace a standard router with an advanced mesh system of nodes that work together to give you flawless WiFi throughout your home.

As your home and family expands, the Linksys **Velop Pro 6E** allows you to easily expand by adding additional nodes to your network, giving you flawless and seamless WiFi everywhere.

Linksys **Velop Pro 6E** nodes cover 3,000 square feet each and up to 200 devices per system.\*

One Linksys WiFi Node covers 3,000 square feet or 1-3 bedroom houses.



Two Linksys WiFi Nodes cover 6,000 square feet or 4+ bedroom houses.



Three Linksys WiFi Nodes cover 9,000 square feet or 4+ bedroom houses.\*\*



# your WiFi's new best friend.

Access your network on the Linksys Mobile App.



## Linksys App at a glance.

- View which devices are connected, and easily limit internet usage with Parental Controls.
- Assign bandwidth hierarchy with Device Prioritisation.
- Keep your WiFi secure with Automatic Firmware updates.
- Give guests access and share their password via text message.

The Linksys app is the command center for your WiFi. Use the Linksys app anywhere you have an internet connection to check connected devices, set up guest access, or keep your kids off the internet when they should be doing homework.

### Parental control.

Create device schedules, block certain websites or pause WiFi for homework.

### Guest access.

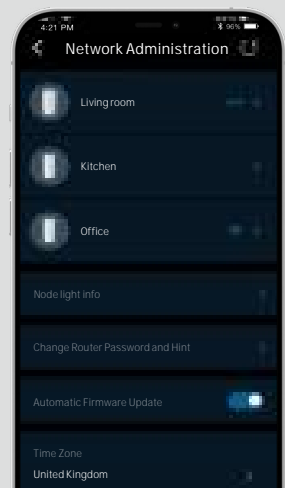
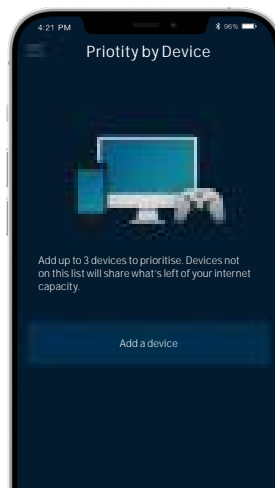
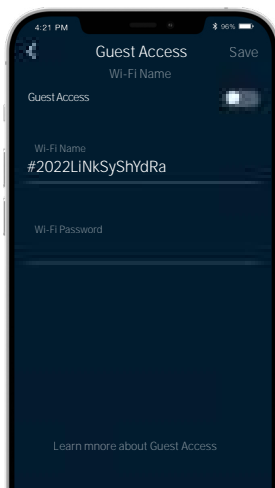
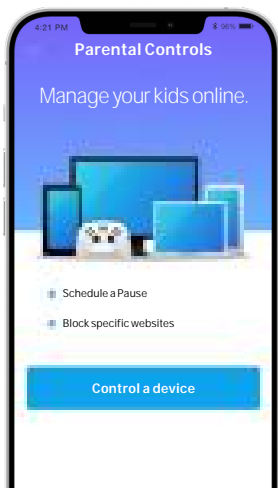
Easily share a guest network with visitors. Your main WiFi stays separated by a firewall.

### Device prioritisation.

Prioritise streaming devices while your kids surf or play games.

### Auto firmware update.

Keep your WiFi safe and secure with Automatic Firmware updates.



# retail packaging.

## 1-pack Europe, UK & Middle East



## 2-pack Europe, UK & Middle East



## 3-pack Europe, UK & Middle East



# specifications.

**Package Includes**

- Linksys Velop® Pro 6E True Tri-Band WiFi 6E router/node (MX6200) + power adapter, 2-pack (x2), 3-pack (x3).
- Ethernet Cable.
- Quick Start Guide
- Regulatory and warranty documentation.

**WiFi Specifications**

IEEE 802.11ax WiFi 6E Tri-Band.

**Radio 1 – 2.4 GHz Band**

802.11 b/g/n/ax  
802.11ax - 600 Mbps\*  
2-stream @ 40MHz channel width.

**Radio 2 – 5 GHz Band**

802.11 a/n/ac/ax  
802.11ax - 2,400 Mbps\*  
2-stream @ 160MHz channel width.

**Radio 3 – 6 GHz Band**

802.11ax  
802.11ax - 2,400 Mbps\*  
2-stream @ 160MHz channel width.

**DL-OFDMA**

(Orthogonal Frequency Division Multiple Access).

**TWT (Target Wait Time),**

STBC (Space Time Block Code).

**MU-MIMO Technology**

2x2+2x2+2x2 MU-MIMO, and 1024-QAM. Downlink and uplink MU-MIMO supported.

**VPN Pass Through – IPSec, PPTP, L2TP**

Advanced Beamforming+ technology.  
VPN Pass Through – IPSec, PPTP, L2TP.

**Required for set-up**

- 1 Internet connection with a modem or modem-router.
- 2 Mobile devices with Android 9.0 iOS 14 and higher, with data connection.

**Processor and Memory**

Advanced Qualcomm™ 1.0 GHz Dual-Core. 512 MB SDRAM.

**Bluetooth®**

5.1/LE for secure and easy App-based Setup.

**Security**

WPA2/WPA3 Mixed Personal, WPA2 Personal, WPA Personal.

Single-port and port-range forwarding, port triggering, Network Address Translation (NAT), Stateful Packet Inspection (SPI) firewall.

Personal Parental Controls featuring time-based, domain-based and MAC address-based (device-based) blocking of Internet access. Separate Guest Network.

**Buttons**

Power on/off switch, Reset.

**Wired Connectivity**

2 Gigabit Ethernet ports (1x WAN, 1x LAN). 802.3ab, 802.3u

**Antennas**

**WiFi:** PCB (I-PEX)  
2x Dual-Band antennas 2.4 GHz / 5 GHz,  
2x Single-Band antennas 6 GHz.  
**Bluetooth:** PCB (I-PEX)  
1x 2.4 GHz antenna.

**Radio Operating Frequencies**

2.4 GHz	.....2,412-2,472 MHz
5 GHz	.....5,180-5,240 MHz, 5,260-5,320 MHz, 5,500-5,700 MHz
6 GHz	.....5,955-6,415 MHz
Bluetooth	.....2,402-2,480 MHz

**Antenna Gain**

<b>WiFi</b>	
2,412-2,472 MHz	.....2.626 dBi
Beamforming	.....2.1 dBi
5,180-5,240 MHz	.....3.6 dBi
Beamforming	.....3.66 dBi
5,260-5,320 MHz	.....3.535 dBi
Beamforming	.....2.74 dBi
5,500-5,700 MHz	.....3.323 dBi
Beamforming	.....2.2 dBi
5,955-6,415 MHz	.....3.706 dBi
Beamforming	.....1.95 dBi
<b>Bluetooth</b>	.....2.562 dBi

**Output Power (EIRP) WiFi**

2,412-2,472 MHz	.....19.86 dBm
Beamforming	.....19.51 dBm
5,180-5,240 MHz	.....22.64 dBm
Beamforming	.....22.72 dBm
5,260-5,320 MHz	.....22.61 dBm
Beamforming	.....22.80 dBm
5,500-5,700 MHz	.....29.47 dBm
Beamforming	.....29.65 dBm
5,955-6,415 MHz	.....22.55 dBm
Beamforming	.....22.80 dBm

**Power adapter**

Input .....100-240 V - 50-60 Hz  
Output .....12 V, 2.5 A

**Temperature**

– Operating .....0 to 40° C  
– Storage .....-20 to 60° C

**Humidity (non-condensing)**

– Operating .....10 to 80% RH  
– Storage .....5 to 90% RH

## Dimensions.

**Product:**

Weight	.....0.673 kg
Depth	.....95 mm
Width	.....95 mm
Height	.....194 mm

**Packaged Unit**

<b>Weight:</b>	
1-Pack	.....1.415 kg
2-Pack	.....2.40 kg
3-Pack	.....3.46 kg

<b>Width:</b>	
1-Pack	.....265.10 mm
2-Pack	.....391 mm
3-Pack	.....265.10 mm

Depth 1- & 2-Pack	.....104 mm
Depth 3-Pack	.....206.5 mm

Height all: .....252.4 mm

**Case Packs**

<b>Weight (*PL):</b>	
1-Pack	.....3.325 kg
2-Pack	.....5.366 kg
3-Pack	.....7.624 kg

<b>Width:</b>	
1-Pack	.....285 mm
2-Pack	.....411 mm
3-Pack	.....433 mm

Depth 1- & 2-Pack	.....228 mm
Depth 3-Pack	.....285 mm

Height all (\*PL) .....293 mm

Quantity all (\*PL) .....2 per pack

Manufacturer	.....Linksys USA, Inc
Brand	.....Linksys
Model Number	.....MX6201/ MX6202/ MX6203
Description	.....Velop® Pro 6E Dual-Band WiFi 6 Mesh Node/Router, 1-, 2-, 3-pack

Linksys UK Limited,  
Amsterdam branch, Regus Atrium.  
Strawinskylaan 3051, Atrium Building  
4th Floor, 1077 ZX Amsterdam

Linksys UK Ltd.  
Regent Park, Booth Drive,  
Park Farm South, Wellingborough,  
Northants, NN8 6GR, United Kingdom

Part Number	Tarif code	UPC	EAN	Plug type
MX6201-KE		745883856626	4260184674770	
MX6202-KE	8517620000	745883856640	4260184674787	Euro (CEE 7/16) + British (BS1363)
MX6203-KE		745883856664	4260184674794	

Linksys USA, Inc.  
121 Theory, Irvine, CA 92617 USA

© 2023 Linksys Holdings, Inc. and/or its affiliates. All rights reserved.  
Designed in the USA  
Made in Vietnam.

Requires customer-paid active internet connection, modem, and compatible iOS or Android mobile device, available ethernet port, nearby power outlet, and the Linksys App. Extra nodes may be needed for some homes. When expanding the network of your Cognitive™ Mesh router, additional Linksys routers or nodes must have Cognitive™ Mesh technology.

\*Specifications are subject to change without notice. Speed reflects maximum combined WiFi speeds across all radios per IEEE Standard 802.11 specifications. Range estimates are based on performance test results. Actual speed, performance and range will vary, and maximum supported speeds will not be available to all customers due to conditions and variables like building materials and construction, volume of network traffic, mix of wireless products used, interference, your wireless device's WiFi standard, wireless obstructions, and external factors.

Linksys and many product names and logos are trademarks of Linksys Holdings Inc. and/or its affiliates. Third-party trademarks mentioned are the property of their respective owners. App Store is a service mark of Apple Inc.

Qualcomm Immersive Home 316 is a product of Qualcomm Technologies Inc. and/or its subsidiaries. Qualcomm is a registered trademark of Qualcomm Incorporated, registered in the United States.

For warranty information, our return policy, privacy policy, terms of service, and more, please refer to [linksys.com/documentation](https://linksys.com/documentation).

User Documentation is also available at: [www.linksys.com/support](https://www.linksys.com/support)

