



DUAL-RTX4060-O8G-WHITE

*2x Fans. 2x Fun.*

## ASUS Innovations

### NV Features

- **NVIDIA Ada Lovelace Streaming Multiprocessors**  
Up to 2x performance and power efficiency
- **4<sup>th</sup> Generation Tensor Cores**  
Up to 4x performance with DLSS 3  
vs. brute-force rendering
- **3<sup>rd</sup> Generation RT Cores**  
Up to 2x ray tracing performance

### Axial-Tech Fan Design

Two tried-and-true Axial-tech fans feature a smaller hub that facilitates longer blades and a barrier ring to increase downward air pressure.



### Dual Ball Fan Bearings

Ball bearings excel at durability and can last up to twice as long as sleeve bearing designs.





## 2.5-slot Design

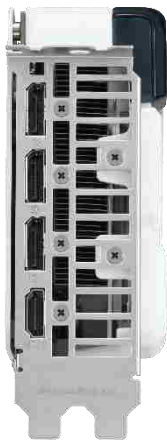
A carefully designed shroud, heatsink, and heatpipe layout allows the two Axial-tech fans to leverage chassis side-panel ventilation and deliver thermal performance that belies the card's size.

## Protective Backplate

The PCB is reinforced by an aluminum backplate that adds structural rigidity, helping to prevent flex and protect components and trace pathways from damage.

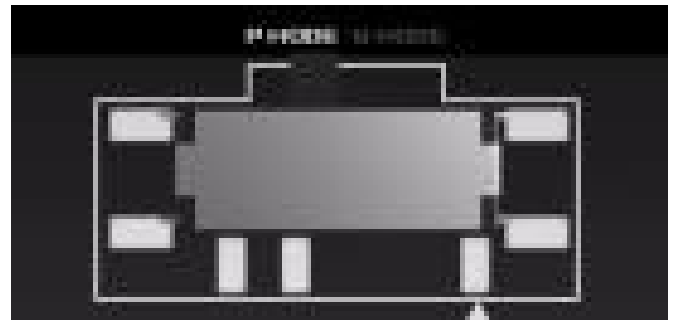
## Stainless Steel Bracket

The mounting bracket of the Dual has been beefed up with 304 Stainless Steel that's harder and more resistant to corrosion.



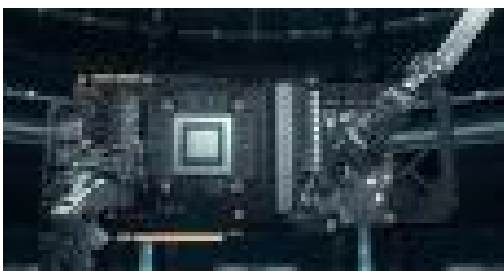
## DUAL BIOS

Performance mode will let the fans spin up to keep the card running cool all the time. Quiet mode keeps the same power target and top-end settings, but offers a less aggressive fan curve for quieter operation at medium temps.



## Auto-Extreme Technology

Auto-Extreme Technology is an automated manufacturing process that sets new standards in the industry by allowing all soldering to be completed in a single pass. This reduces thermal strain on components and avoids the use of harsh cleaning chemicals, resulting in less environmental impact, lower manufacturing power consumption, and a more reliable product overall.



## Software Suite

Hardware and software come together to let you fully customize your experience and get the most out of your graphics card. GPU Tweak III allows for hardware tweaking and monitoring, and QuantumCloud utilizes your spare GPU computing power to generate passive income.





## ASUS Features



### OC edition

TBD MHz GPU boost clock in OC mode for outstanding gaming experience.



### 8GB GDDR6 Memory

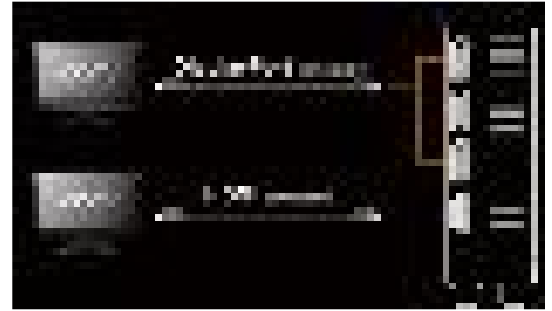
On-board memory for the best gaming experience and the best resolution.



### 0dB Technology

An advanced controller brings fans to a standstill below 50 Celsius, letting you enjoy light gaming in relative silence.

## I/O Specifications

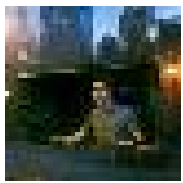


## NV Features



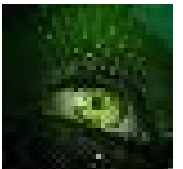
### Resizable BAR

Resizable BAR is an advanced PCI Express feature that enables the CPU to access the entire GPU frame buffer at once, improving performance in many games.



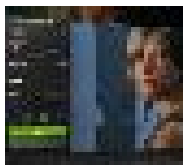
### Game Ready Drivers

GeForce Game Ready Drivers deliver the best experience for your favorite games. They're finely tuned in collaboration with developers and extensively tested across thousands of hardware configurations for maximum performance and reliability.



### GeForce Experience

Capture and share videos, screenshots, and live streams with friends. Keep your drivers up to date and optimize your game settings. GeForce Experience lets you do it all. It's the essential companion to your GeForce graphics card



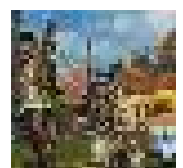
### NVIDIA G-SYNC

Get smooth, tear-free gameplay at high refresh rates, plus HDR and more. This is the ultimate gaming display and the go-to equipment for enthusiast gamers.



### NVIDIA Ansel

Turn your screenshots into art with this powerful in-game photo mode that captures 360, HDR, and super-resolution photos.



### Virtual Reality

The highest performance graphics deliver the smoothest, most immersive VR experiences.



## Specifications

<b>Model Name</b>	DUAL-RTX4060-O8G-WHITE
Graphics Engine	NVIDIA GeForce RTX™ 4060
CUDA Cores	3072
OpenGL®	OpenGL® 4.6
Engine Clock	OC Mode : TBD MHz (Boost Clock) Default Mode : TBD MHz (Boost Clock)
Memory Interface	128-bit
Video Memory	8GB GDDR6
Memory Clock	17 Gbps
Power Connector	1x 8 pin
I/O	1 x Native HDMI 2.1a 3 x Native DisplayPort 1.4a
HDCP Compliant	HDCP 2.3
Digital Max. Resolution	7680 x 4320
Maximum Display Support	4
NVLink/Crossfire Support	NA
Recommended PSU	550W
Bus Standard	PCIe 4.0
Package Contents	1 x Collection Card / 1 x Speedsetup Manual / 1 x Thank you Card
Software Bundled	ASUS GPU Tweak III & GeForce Game Ready Driver & Studio Driver (Please download all software from the support site.)
Slot	2.5-slot
<b>Dimension</b>	
Card Size (mm/inch)	200 x 123 x 38 mm 7.87 x 4.84 x 1.496 inches
Color Box (mm)	303 x 220 x 55 mm
<b>Weight</b>	
Single Card (KG)	0.616
Product Weight (with packing) (KG)	1.121
<b>Note</b>	<p>* Our wattage recommendation is based on a fully overclocked GPU and CPU system configuration. For a more tailored suggestion, please use the "Choose By Wattage" feature on our PSU product page: <a href="https://rog.asus.com/event/PSU/ASUS-Power-Supply-Units/index.html">https://rog.asus.com/event/PSU/ASUS-Power-Supply-Units/index.html</a></p> <p>* All specifications are subject to change without notice. Please check with your supplier for exact offers. Products may not be available in all markets. If you do not use the latest and current specifications of ASUS products, you shall be liable for all loss and damage claimed by third party to ASUS based on false advertising or any other issues caused from using false specifications of ASUS products.</p>