

PT640



Mounting Pattern
450 x 305mm
(17.72" x 12.01")



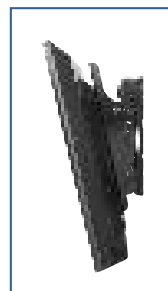
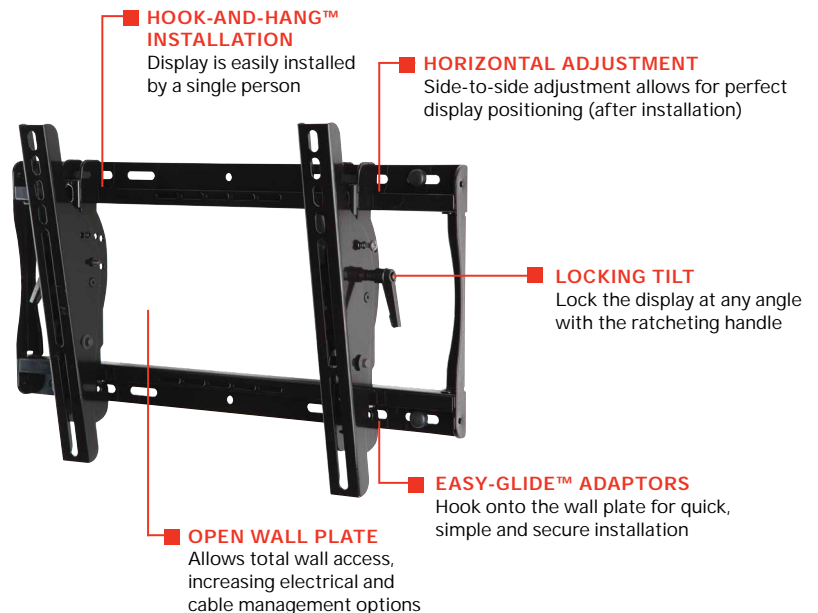
Max Load
100lb
(45kg)

PARAMOUNT™ Universal Tilt Wall Mount

FOR 32" TO 46" DISPLAYS*

The Paramount™ series wall mounts provide versatile and multi-functional features. With PT640, a low-profile design positions the display just 2.63" (67mm) from the wall. The Hook-and-Hang™ system offers easy, one-person installation of the display. The Easy-Glide™ adaptors hook onto the wall plate for a quick, simple, and secure installation. After installation, achieve perfect display positioning with side-to-side adjustment capabilities. A ratcheting handle provides locking tilt capability for quick adjustments to the amount of tilt, reducing glare and optimizing the viewing angle. Lock the tilt angle to prevent tampering or moving with the IncreLok™ tilt technology.

- Universal mount fits displays with mounting patterns up to 450 x 305mm (17.72" W x 12.01" H) and accommodates up to 400 x 300mm VESA® mounting patterns
- Adjustable 15° forward tilt and 5° backward tilt for finding the optimal viewing angle
- Easy-Grip™ ratcheting handle locks tilt angle into place
- Included IncreLok™ feature offers locked tilt lock in 5° increments when used
- Horizontal display adjustment up to 6.00" (152mm) for centering display on wall
- Landscape to portrait mounting options increases installation versatility. Please check display dimensions against the wall plate when used in portrait mode**
- Includes all necessary wall and display attachment hardware
- Design is UL listed and tested to four times stated load capacity



+15°/-5° of tilt for versatile viewing angles.



Comes in color packaging with included installation hardware and easy to follow instructions.

Please visit peerless-av.com/en-us/patents for patent information.

*This display size range is simply a guideline for product selection. Displays larger than the screen size range may still be compatible as long as they fall within the VESA® pattern and max weight of the Peerless-AV® product.

**Requires display to be removed and reset on mount

PT640	Paramount™ Universal Tilt Wall Mount for 32" to 46" Displays
-------	--

Product Specifications

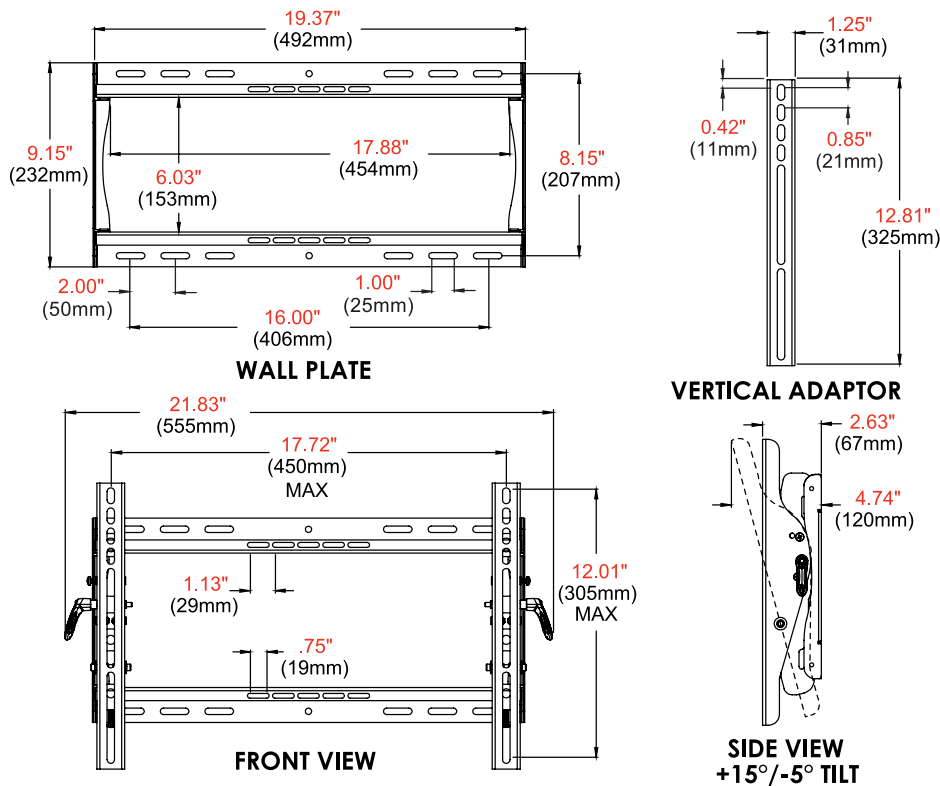
	DIMENSIONS (W x H x D)	PRODUCT WEIGHT	LOAD CAPACITY	FINISH	AVAILABLE COLORS
PT640	21.83" x 12.81" x 2.63"-4.74" (555 x 325 x 67-120mm)	6.50lb (2.95kg)	100lb (45kg)	Scratch Resistant Fused Epoxy	Gloss Black

Package Specifications

	PACKAGE SIZE (W x H x D)	PACKAGE SHIP WEIGHT	PACKAGE UPC CODE	PACKAGE CONTENTS	UNITS IN PACKAGE
PT640	21.69" x 2.95" x 10.74" (551 x 75 x 273mm)	8.15lb (3.70kg)	735029252344	Wall Mount, Wall and Display Installation Hardware, Installation Instructions	1

Accessories

- ACC309: Video Conference Shelf
- ACC415: 4-pack Metal Stud Fastener Kit
- ACC925: Security Fasteners for V200x200 to V800x400 Mounts
- ACC-M835: Security Fast-Pack, M8x25 & M8x35
- ACC-UCM: Universal AV Component Mount
- ACC-V600X: 600mm Extension for 400mm Adaptors
- ACC-V900X: 600, 800 or 900mm Extension for 400mm Adaptors
- ACC-WMVCs: Video Conferencing Shelf
- ACSBR1: Universal Sound Bar Mounting Kit
- ESHV models: AV Wall Shelves
- IBA4-W: Easy Mount Recessed Low Voltage Cable Plate
- IBA5-W: Recessed Low Voltage Media Plate w/ Duplex Surge Protector
- IB14X9-W: 14x9" In-Wall Box
- IB14X9-AC-W: 14x9" In-Wall Box with Duplex Surge Protector
- IB14X14-W: 14x14" In-Wall Box
- IB14X14-AC-W: 14x14" In-Wall Box with Duplex Surge Protector



Architect Specifications

The Paramount™ Tilt Wall Mount shall be a Peerless-AV model PT640 and shall be located where indicated on the plans. Assembly and installation shall be done according to instructions provided by the manufacturer.

Visit peerless-av.com to see the complete line of AV solutions from Peerless-AV, including outdoor displays, kiosks, display mounts, projector mounts, carts/stands, and a full assortment of accessories.

Peerless-AV
 2300 White Oak Circle
 Aurora, IL 60502 USA
(800) 865-2112
(630) 375-5100
Fax: (800) 359-6500

Peerless-AV EMEA
 Unit 3 Watford Interchange
 Colonial Way, Watford
 Herts, WD24 4WP
 United Kingdom
+44 (0) 1923 200100
Fax: +44 (0) 1923 200101

Peerless-AV Latin America
 Av. de las Industrias 413
 Parque Industrial Escobedo
 General Escobedo, N.L.,
 México, 66062
+52 (81) 8384-8300
Fax: +52 (81) 8384-8360

