

Entry-level models with pro functionality suitable for use in huddle rooms, small classrooms and conference rooms.

Camera performance and functions that give the feeling of "being in the same room" during online meetings.

Boasting high image quality, wide-angle coverage of up to 71° horizontal and a maximum 12x optical zoom, the UE20/HE20 clearly captures the facial expressions of participants in a meeting. The UE20/HE20 allows for effortless online communication.

Excellent system flexibility to achieve smart set up and smooth operation.

By using a Panasonic remote camera controller or linking with software, the cameras can be easily installed, managed and used by a single operator. The UE20/HE20 is a simple system configuration that eases usability.

Compact size and excellent functionality that does not disturb the existing streaming environment.

The compact camera is the ultimate space-saver. The UE20/HE20 is suitable for replacing an existing camera or expanding your current system.



Various features and functions to deliver flexibly to any video shooting needs

Supports 4 interfaces

The UE20/HE20 supports four output interfaces—3G-SDI, HDMI, IP and USB—so it can be used with a wide range of devices.

Allows expansion of existing system

The UE20/HE20 supports multiple outputs so it can be used with an existing system equipment.

Ideal for online meetings



AW-UE20



AW-HE20

The UE20/HE20 supports UVC¹ so the video and audio signals can be output over USB. By using the PTZ Virtual USB Driver software and connecting with a LAN cable, it is possible to use the UE20/HE20 as a USB camera.

This can also be linked with Panopto.

¹ UVC: USB video class - a standard for connecting video-handling devices such as webcams to a computer via USB.

Supports Panasonic software

The UE20/HE20 supports the PTZ Control Center to improve workflow efficiency at on-site or remote video shooting sites.

Single controller¹ can control up to 200 camera units

By using devices compatible with PoE+² for network connection, the video/audio/control signals and the power supply can be transmitted via single LAN cable.

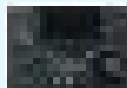
¹ When AW-PR150GJ or AW-RP60 remote camera controller is used

² PoE+: Power over Ethernet Plus

Other Features

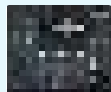
- RTMP/RTMPS for direct streaming
- Operable from Web GUI

Accessories



Remote Camera Controller
AW-RP150

High operability ensured through touch-panel GUI monitor and a new type of joystick.



Remote Camera Controller
AW-RP60

Equipped with a GUI menu screen for clear visibility and a joystick for intuitive control.



Visual Preset Software Key
AW-SF300

GUI screen that enables the subject of multiple PTZ Cameras to be switched with a single click of an icon.

Panasonic Connect Co., Ltd.

2-15 Matsuba-cho, Kadoma, Osaka 571-8503 Japan

SP-UE/HE20WEB3 202204SP



Factories of Panasonic Connect Co., Ltd. have received ISO14001:2015-the Environmental Management System certification. (Except for 3rd party's peripherals.)

Specifications

		AW-UE20W/K	AW-HE20W/K
Comprehensive			
Power Requirements		DC12V±10% (10.8V-13.2V) AC adapter: AC100-240V	
Current Consumption		1.3A (DC Jack Input), 0.4 A (PoE+ power supply), AC adapter (included) : 3.0A	
Mass		Approx. 1.9 kg (4.19 lbs) (excluding ceiling mounting bracket)	
External Dimensions		Width 165.1 mm × Height 176.2 mm × Depth 176.1 mm (6.5 inches × 6.94 inches × 6.93 inches) (Excluding protrusions, cable cover, ceiling mounting bracket)	
Camera Part			
Image Sensors		1/2.8-type MOS×1	
Effective Pixels		Approx. 8.46million pixels	
Lens		Motorized 12x optical zoom F1.6 - F2.8 (f=3.9 - 46.8mm, 35mm equivalent: 26.4mm - 316.4mm)	
Zoom Magnification		<ul style="list-style-type: none"> • Optical zoom: 12 x • i.Zoom: UHD 1.33x, FHD 1.33x • Digital extender-zoom: 1.4x, 2x 	
Angle of View Range		Horizontal angle of view: 71° (Wide) to 6° (Tele) Vertical angle of view: 43° (Wide) to 3° (Tele) Diagonal angle of view: 79° (Wide) to 7° (Tele)	
Horizontal Resolution	4K HD	1400 TV Typ (Center area) 1000 TV Typ (Center area)	—
Output Format	SDI HD	[60Hz] 1080/60p, 1080/60i, 1080/30p, 720/60p [59.94Hz] 1080/59.94p, 1080/59.94i, 1080/29.97p, 720/59.94p [50Hz] 1080/50p, 1080/50i, 1080/25p, 720/50p	
	HDMI 4K	[60Hz] 2160/30p [59.94Hz] 2160/29.97p [50Hz] 2160/25p	—
	HD	[60Hz] 1080/60p, 1080/60i, 1080/30p, 720/60p [59.94Hz] 1080/59.94p, 1080/59.94i, 1080/29.97p, 720/59.94p [50Hz] 1080/50p, 1080/50i, 1080/25p, 720/50p	
Output			
Video Output	HDMI	HDMI connector (4:4:4/8bit) ^{1, 2}	
	3G-SDI OUT	75 BNC (LEVEL-A compatible) ³	
Input/Output			
Input/Output Connector	LAN	LAN terminal for IP control (RJ-45)	
	RS-422	CONTROL IN RS422A (RJ-45)	
	MIC/LINE input (HDMI / IP / USB)	AAC compatibility (compatible with IP only), Ø3.5 mm stereo mini jack	
	During MIC input	Input level: -40 dBV (0 dB=1 V/Pa, 1 kHz) Supply voltage: 2.5 V±0.5 V (plug-in power compatible)	
	During LINE input	Input level: -10 dBV	
Rotating PlatformPart			
Pan Operating Range		±170°	
Tilt Operating Range		-30°-90° ⁴	
IP Streaming			
Image Streaming Mode		MJPEG (HTTP), H.264 (RTSP/RTMP/RTMPS), H.265 (RTSP)	
Image Resolution	MJPEG	1280x720, 640x360	
	H.264/H.265	3840x2160, 1920x1080, 1280x720, 640x360	1920x1080, 1280x720, 640x360
Image Transmission Setting ⁵	MJPEG	Frame Rate: Up to 30 fps (25 fps) Bit Rate: Not specified	
	H.264	Frame Rate: [60Hz/59.94Hz] 5fps/15fps/30fps/60fps ⁶ [50Hz] 5fps/10fps/25fps/50fps Max Bit Rate: [RTSP/RTMP] 1024kbps-32768kbps [RTMPS] 1024kbps-8192kbps	
	H.265	Frame Rate: [60Hz/59.94Hz] 5fps/15fps/30fps/60fps ⁶ [50Hz] 5fps/10fps/25fps/50fps ⁷ Max Bit Rate: 1024kbps-32768kbps	

¹ HDCP is not supported. ² Viera Link is not supported. ³ Embedded audio is not supported. ⁴ The main unit may appear in the video depending on the pan/tilt position. ⁵ JPEG and H.264 or H.265 simultaneous operation is possible. ⁶ 4K up to 30 fps (UE20 only) ⁷ 4K up to 25 fps (UE20 only) *This specification is a part. Please see the website for details.



For more information, please visit Panasonic web site

https://pro-av.panasonic.net/en/?cid=ad_qr_mz_prd_mebd-ue80_211012_all_s_gj



Broadcast and Professional AV Website



Contact Information



Facebook



Mobile App