



BenQ SW272Q computer monitor 68.6 cm (27") 2560 x 1440 pixels Wide Quad HD LCD Black

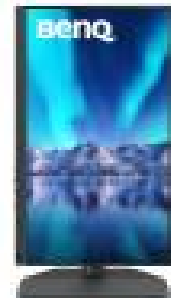
Brand : BenQ

Product code: 9H.LLPLB.QBE

Product name : SW272Q

27" 2560 x 1440, HDR10, 5 ms, 100% sRGB, 98% DCI-P3, 99% Adobe RGB, 60 Hz, HDR10, USB-C, 100 - 240V, 25 W

BenQ SW272Q. Display diagonal: 68.6 cm (27"), Display resolution: 2560 x 1440 pixels, HD type: Wide Quad HD, Display technology: LCD, Response time: 5 ms, Native aspect ratio: 16:9, Viewing angle, horizontal: 178°, Viewing angle, vertical: 178°. Built-in USB hub, USB hub version: 3.2 Gen 1 (3.1 Gen 1). VESA mounting, Height adjustment. Product colour: Black



Display		Ports & interfaces	
Display diagonal *	68.6 cm (27")	USB Power Delivery up to	90 W
Display resolution *	2560 x 1440 pixels	HDMI *	✓
HD type *	Wide Quad HD	HDMI ports quantity	2
Native aspect ratio *	16:9	HDMI version	2.0
Display technology *	LCD	DisplayPorts quantity	1
Panel type *	IPS	DisplayPort version	1.4
Backlight type	LED	Headphone out *	✓
Touchscreen *	✗	Headphone outputs	1
Display brightness (typical)	300 cd/m ²	Headphone connectivity	3.5 mm
Response time *	5 ms	HDCP	✓
Anti-glare screen	✓	HDCP version	2.2
Screen shape *	Flat	Card reader integrated	✓
Contrast ratio (typical) *	1000:1	Compatible memory cards	MMC, SD, SDHC, SDXC
Maximum refresh rate *	60 Hz	Ergonomics	
Viewing angle, horizontal	178°	VESA mounting *	✓
Viewing angle, vertical	178°	Panel mounting interface	100 x 100 mm
Display number of colours *	1.07 billion colours	Wall mountable	✓
Pixel density	109 ppi	Height adjustment *	✓
High Dynamic Range (HDR) supported	✓	Height adjustment	14 cm
High Dynamic Range (HDR) technology	High Dynamic Range 10 (HDR10)	Pivot	✓
Colour depth	16 bit	Pivot angle	0 - 90°
Colour gamut standard	DCI-P3	Swivelling	✓
Colour gamut	98%	Swivel angle range	30 - 30°
sRGB coverage (typical)	100%	Tilt adjustment	✓
Adobe RGB coverage	99%	Tilt angle range	-5 - 20°
		On Screen Display (OSD)	✓
Performance			
NVIDIA G-SYNC *	✗		

Performance		Ergonomics	
AMD FreeSync *	✘	On Screen Display (OSD) languages	Arabic, Simplified Chinese, Traditional Chinese, Czech, German, Dutch, English, Spanish, French, Hungarian, Italian, Japanese, Korean, Polish, Portuguese, Romanian, Russian, Swedish
Multimedia			
Built-in speaker(s) *	✘		
Built-in camera *	✘		
Design		Power	
Market positioning *	Gaming	Energy efficiency class (SDR) *	F
Product colour *	Black	Energy efficiency class (HDR) *	G
Feet colour	Black	Energy consumption (SDR) per 1000 hours *	25 kWh
Ports & interfaces		Energy consumption (HDR) per 1000 hours *	35 kWh
Built-in USB hub *	✓	Power consumption (typical) *	25 W
USB hub version	3.2 Gen 1 (3.1 Gen 1)	Power consumption (max)	160 W
USB upstream port type	USB Type-B, USB Type-C	AC input voltage	100 - 240 V
Number of upstream ports	2	Energy efficiency scale	A to G
Number of USB Type-B upstream ports quantity	1	European Product Registry for Energy Labelling (EPREL) code	1435113
Number of USB Type-C upstream ports quantity	1	Weight & dimensions	
USB Type-A downstream ports quantity	2	Width (with stand)	613.9 mm
USB Type-C DisplayPort Alternate Mode	✓	Depth (with stand)	274 mm
USB Power Delivery	✓	Height (with stand)	591.8 mm
		Weight (with stand)	8.3 kg
		Weight (without stand)	4.92 kg
		Other features	
		Hardware calibration	✓



4718755091209

Disclaimer. The information published here (the "Information") is based on sources that can be considered reliable, typically the manufacturer, but this Information is provided "AS IS" and without guarantee of correctness or completeness. The Information is only indicative and can be changed at any time without notification. No rights can be based on the Information. Suppliers or aggregators of this Information do not accept any liability with regard to the content of (web)pages and other documents, including its Information. The publisher of the Information can not be held liable for the content of 3rd party websites that are linking this Information or are linked to from this Information. You as the User of the Information are solely responsible for the choice and usage of this Information. You are not entitled to transfer, copy or otherwise multiply or distribute the Information. You are obliged to follow the directions of the copyright owner(s) with regard to the use of the Information. Exclusively Dutch law is applicable. With regard to price and stock data on the site, the publisher followed a number of starting points, which are not necessarily relevant for your private or business circumstances. Therefore, the price and stock data are only indicative and are subject to changes. You are personally responsible for the way you use and apply this information. As a user of the Information or sites or documents in which this Information is included, you will adhere to standard fair use including avoidance of spamming, ripping, intellectual-property violations, privacy violations, and any other illegal activity.

Publication date: 30-OCT-2024. Prints or copies of Information are only valid on the printed Publication date