

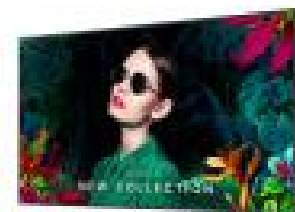
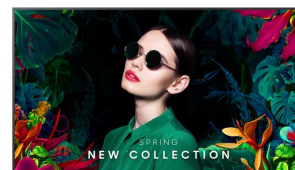


# Samsung QM65C Digital signage flat panel 165.1 cm (65") LCD Wi-Fi 500 cd/m<sup>2</sup> 4K Ultra HD Black Tizen 24/7

**Brand :** Samsung

**Product family:** QMC

**Product code:**  
LH65QMCEBGCXEN



**Product name :** QM65C

- Ultra Slim Depth
- Even Bezel

- Centered VESA Holes

65", VA, 4K UHD (3840 x 2160), 500 nit, 4000:1, 178/178, 8 ms, Bluetooth, WiFi, RJ-45, HDCP, DP, HDMI, RS232, AC 100-240V, 50/60Hz, 1456.8 x 831.9 x 28.5 mm, 21.5 kg

Samsung QM65C. Product design: Digital signage flat panel. Display diagonal: 165.1 cm (65"), Display technology: LCD, Display resolution: 3840 x 2160 pixels, Display brightness: 500 cd/m<sup>2</sup>, HD type: 4K Ultra HD. Wi-Fi. Operating hours (hours/days): 24/7. Operating system installed: Tizen. Product colour: Black



Display		Design	
Panel type	VA	Panel mounting interface	400 x 300 mm
LED backlight	✓	Bezel width (bottom)	1.15 cm
Display diagonal *	165.1 cm (65")	Bezel width (side)	1.15 cm
Display technology *	LCD	Bezel width (top)	1.15 cm
Display resolution *	3840 x 2160 pixels	Bezel colour	Charcoal Black
Display brightness *	500 cd/m <sup>2</sup>	<b>Performance</b>	
HD type *	4K Ultra HD	Purpose *	Universal
Touchscreen *	✗	Operating hours (hours/days)	24/7
Response time	8 ms	HDCP	✓
Contrast ratio (typical)	4000:1	HDCP version	2.2
Dynamic contrast ratio marketing name	Mega Contrast	<b>Power</b>	
Viewing angle, horizontal	178°	Power consumption (typical) *	187 W
Viewing angle, vertical	178°	Power consumption (sleep)	0.5 W
Pixel pitch	0.372 x 0.372 mm	Energy efficiency class (SDR)	G
Display diagonal (metric)	163 cm	Energy consumption (SDR) per 1000 hours	135 kWh
Horizontal scan range	30 - 81 kHz	AC input voltage	100 - 240 V
Vertical scan range	48 - 75 Hz	AC input frequency	50/60 Hz
Haze rate	25%	Energy efficiency scale	A to G
Pixel frequency (max)	594 MHz	<b>Computer system</b>	
Colour gamut	72%	Operating system installed	Tizen
<b>Ports &amp; interfaces</b>		Operating system version	7.0
HDMI ports quantity *	3	<b>Weight &amp; dimensions</b>	
HDMI version	2.0	Display width	1456.8 mm
HDMI input ports quantity	3	Display depth	28.5 mm
DVI port *	✗	Display height	831.9 mm
DisplayPorts quantity *	1	Display weight	21.5 kg
DisplayPorts in	1	<b>Packaging data</b>	
DisplayPort version	1.2	Package width	1616 mm
USB port *	✓	Package depth	164 mm
USB ports quantity	2	Package height	945 mm
Ethernet LAN *	✓	Package weight	28 kg
Wi-Fi *	✓		
Audio (L/R) out	1		
RS-232 interface	✓		
Infrared data port	✓		

Design		Operational conditions	
Product design *	Digital signage flat panel	Operating temperature (T-T)	0 - 40 °C
Placement supported *	Indoor	Operating relative humidity (H-H)	10 - 80%
Product colour *	Black	Certificates	
Screen shape	Flat	Certification	Class B 60950-1, 62368-1
VESA mounting *	✓	Other features	
		Bluetooth	✓
		Flash memory	16000 MB
		Optional features	WMN-B50SC STN-L4355C



8806094973945

Disclaimer. The information published here (the "Information") is based on sources that can be considered reliable, typically the manufacturer, but this Information is provided "AS IS" and without guarantee of correctness or completeness. The Information is only indicative and can be changed at any time without notification. No rights can be based on the Information. Suppliers or aggregators of this Information do not accept any liability with regard to the content of (web)pages and other documents, including its Information. The publisher of the Information can not be held liable for the content of 3rd party websites that are linking this Information or are linked to from this Information. You as the User of the Information are solely responsible for the choice and usage of this Information. You are not entitled to transfer, copy or otherwise multiply or distribute the Information. You are obliged to follow the directions of the copyright owner(s) with regard to the use of the Information. Exclusively Dutch law is applicable. With regard to price and stock data on the site, the publisher followed a number of starting points, which are not necessarily relevant for your private or business circumstances. Therefore, the price and stock data are only indicative and are subject to changes. You are personally responsible for the way you use and apply this information. As a user of the Information or sites or documents in which this Information is included, you will adhere to standard fair use including avoidance of spamming, ripping, intellectual-property violations, privacy violations, and any other illegal activity.

Publication date: 30-OCT-2024. Prints or copies of Information are only valid on the printed Publication date