

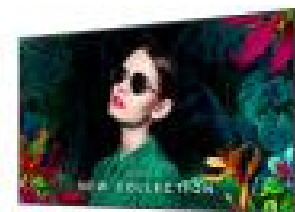
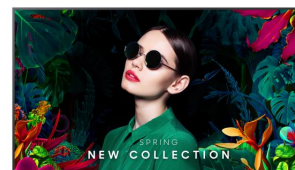


Samsung QM55C Digital signage flat panel 139.7 cm (55") LCD Wi-Fi 500 cd/m² 4K Ultra HD Black Tizen 24/7

Brand : Samsung

Product family: QMC

Product code:
LH55QMCEBGCXEN



Product name : QM55C

- Ultra Slim Depth
- Even Bezel

- Centered VESA Holes

55", VA, 4K UHD (3840 x 2160), 500 nit, 4000:1, 178/178, 8 ms, Bluetooth, WiFi, RJ-45, HDCP, DP, HDMI, RS232, AC 100-240V, 50/60Hz, 1237.9 x 708.8 x 28.5 mm, 15.7 kg

Samsung QM55C. Product design: Digital signage flat panel. Display diagonal: 139.7 cm (55"), Display technology: LCD, Display resolution: 3840 x 2160 pixels, Display brightness: 500 cd/m², HD type: 4K Ultra HD. Wi-Fi. Operating hours (hours/days): 24/7. Operating system installed: Tizen. Product colour: Black



Display		Design	
Panel type	VA	Bezel width (bottom)	1.15 cm
LED backlight	✓	Bezel width (side)	1.15 cm
Display diagonal *	139.7 cm (55")	Bezel width (top)	1.15 cm
Display technology *	LCD	Bezel colour	Charcoal Black
Display resolution *	3840 x 2160 pixels	Performance	
Display brightness *	500 cd/m ²	Purpose *	Universal
HD type *	4K Ultra HD	Operating hours (hours/days)	24/7
Touchscreen *	✗	HDCP	✓
Response time	8 ms	HDCP version	2.2
Contrast ratio (typical)	4000:1	Power	
Dynamic contrast ratio marketing name	Mega Contrast	Power consumption (typical) *	154 W
Viewing angle, horizontal	178°	Power consumption (sleep)	0.5 W
Viewing angle, vertical	178°	Energy efficiency class (SDR)	G
Pixel pitch	0.315 x 0.315 mm	Energy consumption (SDR) per 1000 hours	102 kWh
Display diagonal (metric)	138 cm	AC input voltage	100 - 240 V
Horizontal scan range	30 - 81 kHz	AC input frequency	50/60 Hz
Vertical scan range	48 - 75 Hz	Energy efficiency scale	A to G
Haze rate	25%	Computer system	
Pixel frequency (max)	594 MHz	Operating system installed	Tizen
Colour gamut	72%	Operating system version	7.0
Ports & interfaces		Weight & dimensions	
HDMI ports quantity *	3	Display width	1237.9 mm
HDMI version	2.0	Display depth	28.5 mm
HDMI input ports quantity	3	Display height	708.8 mm
DVI port *	✗	Display weight	15.7 kg
DisplayPorts quantity *	1	Packaging data	
DisplayPorts in	1	Package width	1403 mm
DisplayPort version	1.2	Package depth	148 mm
USB port *	✓	Package height	835 mm
USB ports quantity	2	Package weight	19.9 kg
Ethernet LAN *	✓	Operational conditions	
Wi-Fi *	✓	Operating temperature (T-T)	0 - 40 °C
RS-232 interface	✓		
Infrared data port	✓		

Design

Product design *	Digital signage flat panel
Placement supported *	Indoor
Product colour *	Black
Screen shape	Flat
VESA mounting *	✓
Panel mounting interface	200 x 200 mm

Operational conditions

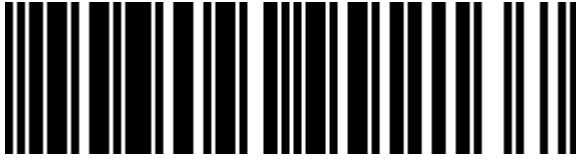
Operating relative humidity (H-H)	10 - 80%
-----------------------------------	----------

Certificates

Certification	Class B 60950-1, 62368-1
---------------	--------------------------

Other features

Bluetooth	✓
Flash memory	16000 MB
Optional features	WMN-B50SC STN-L4355C



8806094992137

Disclaimer. The information published here (the "Information") is based on sources that can be considered reliable, typically the manufacturer, but this Information is provided "AS IS" and without guarantee of correctness or completeness. The Information is only indicative and can be changed at any time without notification. No rights can be based on the Information. Suppliers or aggregators of this Information do not accept any liability with regard to the content of (web)pages and other documents, including its Information. The publisher of the Information can not be held liable for the content of 3rd party websites that are linking this Information or are linked to from this Information. You as the User of the Information are solely responsible for the choice and usage of this Information. You are not entitled to transfer, copy or otherwise multiply or distribute the Information. You are obliged to follow the directions of the copyright owner(s) with regard to the use of the Information. Exclusively Dutch law is applicable. With regard to price and stock data on the site, the publisher followed a number of starting points, which are not necessarily relevant for your private or business circumstances. Therefore, the price and stock data are only indicative and are subject to changes. You are personally responsible for the way you use and apply this information. As a user of the Information or sites or documents in which this Information is included, you will adhere to standard fair use including avoidance of spamming, ripping, intellectual-property violations, privacy violations, and any other illegal activity.

Publication date: 30-OCT-2024. Prints or copies of Information are only valid on the printed Publication date