

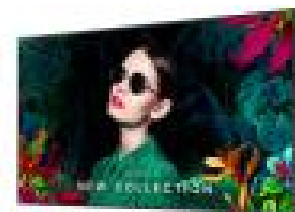
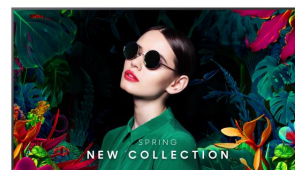


# Samsung QM75C Digital signage flat panel 190.5 cm (75") LCD Wi-Fi 500 cd/m<sup>2</sup> 4K Ultra HD Black Tizen 24/7

**Brand :** Samsung

**Product family:** QMC

**Product code:**  
LH75QMCEBGCXEN



**Product name :** QM75C

- Ultra Slim Depth  
- Even Bezel  
- Centered VESA Holes  
75", VA, 4K UHD (3840 x 2160), 500 nit, 4000:1, 178/178, 8 ms, Bluetooth, WiFi, RJ-45, HDCP, DP, HDMI, RS232, AC 100-240V, 50/60Hz, 1682.3 x 960.4 x 28.5 mm, 33.4 kg  
Samsung QM75C. Product design: Digital signage flat panel. Display diagonal: 190.5 cm (75"), Display technology: LCD, Display resolution: 3840 x 2160 pixels, Display brightness: 500 cd/m<sup>2</sup>, HD type: 4K Ultra HD. Wi-Fi. Operating hours (hours/days): 24/7. Operating system installed: Tizen. Product colour: Black

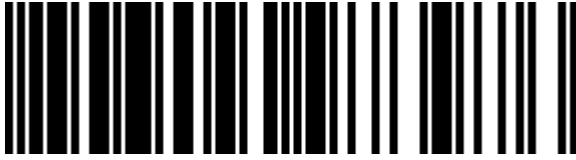
Display		Design	
Panel type	VA	Screen shape	Flat
LED backlight	✓	VESA mounting *	✓
Display diagonal *	190.5 cm (75")	Panel mounting interface	400 x 400 mm
Display technology *	LCD	Bezel width (bottom)	1.34 cm
Display resolution *	3840 x 2160 pixels	Bezel width (side)	1.34 cm
Display brightness *	500 cd/m <sup>2</sup>	Bezel width (top)	1.34 cm
HD type *	4K Ultra HD	Bezel colour	Charcoal Black
Touchscreen *	✗	Performance	
Response time	8 ms	Purpose *	Universal
Contrast ratio (typical)	4000:1	Operating hours (hours/days)	24/7
Dynamic contrast ratio marketing name	Mega Contrast	HDCP	✓
Viewing angle, horizontal	178°	HDCP version	2.2
Viewing angle, vertical	178°	Power	
Pixel pitch	0.429 x 0.429 mm	Power consumption (typical) *	214.5 W
Display diagonal (metric)	189 cm	Power consumption (sleep)	0.5 W
Horizontal scan range	30 - 81 kHz	AC input voltage	100 - 240 V
Vertical scan range	48 - 75 Hz	AC input frequency	50/60 Hz
Haze rate	25%	Computer system	
Pixel frequency (max)	594 MHz	Operating system installed	Tizen
Colour gamut	72%	Operating system version	7.0
Ports & interfaces		Weight & dimensions	
HDMI ports quantity *	3	Display width	1682.3 mm
HDMI version	2.0	Display depth	28.5 mm
HDMI input ports quantity	3	Display height	960.4 mm
DVI port *	✗	Display weight	33.4 kg
DisplayPorts quantity *	1	Packaging data	
DisplayPorts in	1	Package width	1839 mm
DisplayPort version	1.2	Package depth	180 mm
USB port *	✓	Package height	1113 mm
USB ports quantity	2	Package weight	43.5 kg
Ethernet LAN *	✓	Operational conditions	
Wi-Fi *	✓	Operating temperature (T-T)	0 - 40 °C
Audio (L/R) out	1	Operating relative humidity (H-H)	10 - 80%
RS-232 interface	✓	Certificates	
Infrared data port	✓	Certification	Class B 60950-1, 62368-1
Design			
Product design *	Digital signage flat panel		
Placement supported *	Indoor		

**Design**

Product colour \*                      Black

**Other features**

Bluetooth                                      ✓  
Flash memory                                16000 MB  
Optional features                            WMN-B50SC STN-L4355C



8806094973976

Disclaimer. The information published here (the "Information") is based on sources that can be considered reliable, typically the manufacturer, but this Information is provided "AS IS" and without guarantee of correctness or completeness. The Information is only indicative and can be changed at any time without notification. No rights can be based on the Information. Suppliers or aggregators of this Information do not accept any liability with regard to the content of (web)pages and other documents, including its Information. The publisher of the Information can not be held liable for the content of 3rd party websites that are linking this Information or are linked to from this Information. You as the User of the Information are solely responsible for the choice and usage of this Information. You are not entitled to transfer, copy or otherwise multiply or distribute the Information. You are obliged to follow the directions of the copyright owner(s) with regard to the use of the Information. Exclusively Dutch law is applicable. With regard to price and stock data on the site, the publisher followed a number of starting points, which are not necessarily relevant for your private or business circumstances. Therefore, the price and stock data are only indicative and are subject to changes. You are personally responsible for the way you use and apply this information. As a user of the Information or sites or documents in which this Information is included, you will adhere to standard fair use including avoidance of spamming, ripping, intellectual-property violations, privacy violations, and any other illegal activity.

Publication date: 30-OCT-2024. Prints or copies of Information are only valid on the printed Publication date