

Panasonic

PTZ Camera System Lineup



PTZ Camera System Specification Comparison

As of April, 2024

	High-end				Standard			Entry		
Model	AW-UE160W/K	AW-UE150W/K	AW-HE145W/K	AW-UE100W/K	AW-UE80W/K	AW-UE50W/K AW-UE40W/K AW-UE30W/K	AW-UE20W/K	AW-HE20W/K	AW-UE4WG/KG	
General										
Sensor	1-type (1") ⁴ 4K MOS	1-type (1") 4K MOS	1-type (1") Full-HD MOS	1/2.5-type (1/2.5") 4K MOS	1/2.5-type (1/2.5") 4K MOS	1/2.5-type (1/2.5") 4K MOS	1/2.8-type (1/2.8") 4K MOS	1/2.8-type (1/2.8") MOS	1/2.5-type (1/2.5") 4K MOS	
Effective Pixels	Approx. 9.62 megapixels	Approx. 20.18 megapixels	Approx. 20.18 megapixels	Approx. 8.49 megapixels	Approx. 8.49 megapixels	Approx. 8.49 megapixels	Approx. 8.46 megapixels	Approx. 8.46 megapixels	Approx. 8.49 megapixels	
Optical Zoom	20x	20x	20x	24x	24x	24x (AW-UE50, AW-UE40) 20x (AW-UE30)	12x	12x	-	
i.Zoom	UHD 24x, FHD 32x	UHD 24x, FHD 32x	FHD 32x	UHD 28x, FHD 36x	UHD 28x, FHD 36x	UHD 28x, FHD 36x	Approx. 16x	Approx. 16x	-	
Digital Zoom	10x	10x	10x	10x	10x	10x	4x	4x	4x	
FOV	Horizontal	75.1° (W) to 4.0° (T)	75.1° (W) to 4.0° (T)	75.1° (W) to 4.0° (T)	74.1° (W) to 3.3° (T)	74.1° (W) to 3.3° (T)	71° (W) to 6° (T)	71° (W) to 6° (T)	111° (LDC OFF) ⁵	
	Vertical	46.7° (W) to 2.3° (T)	46.7° (W) to 2.3° (T)	46.7° (W) to 2.3° (T)	46.0° (W) to 1.9° (T)	46.0° (W) to 1.9° (T)	43° (W) to 3° (T)	43° (W) to 3° (T)	75° (LDC OFF) ⁵	
	Diagonal	82.8° (W) to 4.6° (T)	82.8° (W) to 4.6° (T)	82.8° (W) to 4.6° (T)	81.8° (W) to 3.8° (T)	81.8° (W) to 3.8° (T)	81.8° (W) to 3.8° (T)	79° (W) to 7° (T)	120° (LDC OFF) ⁵	
Focus	Auto / Manual	Auto / Manual	Auto / Manual	Auto / Manual	Auto / Manual	Auto / Manual	Auto / Manual	Auto / Manual	Single focus	
Horizontal Resolution	4K: 1,600 TV lines Typ (Center area) HD: 1,000 TV lines Typ (Center area)	4K: 2,000 TV lines Typ (Center area) HD: 1,000 TV lines Typ (Center area)	HD: 1,000 TV lines Typ (Center area)	4K: 1,500 TV lines Typ (Center area) HD: 1,000 TV lines Typ (Center area)	4K: 1,500 TV lines Typ (Center area) HD: 1,000 TV lines Typ (Center area)	4K: 1,500 TV lines Typ (Center area) HD: 1,000 TV lines Typ (Center area)	4K: 1,400 TV lines Typ (Center area) HD: 1,000 TV lines Typ (Center area)	HD: 1,000 TV lines Typ (Center area)	4K: 1,400 TV lines Typ (Center area) ⁶ HD: 900 TV lines Typ (Center area) ⁶	
Standard Sensitivity	F14 / 2,000 lx (Low Light) F11 / 2,000 lx (Normal)	F12 / 2,000 lx (High Sens) F9 / 2,000 lx (Normal)	F12 / 2,000 lx (High Sens) F9 / 2,000 lx (Normal)	F5.6 / 2,000 lx (High Sens) F4 / 2,000 lx (Normal)	-	-	-	-	-	
Gain	Auto, -6 dB to 12 dB (1 dB step)	Auto, -3 dB to 36 dB (1 dB step) (Super Gain function equipped: 37 dB to 42 dB)	Auto, -3 dB to 36 dB (1 dB step) (Super Gain function equipped: 37 dB to 42 dB)	Auto, 0 dB to 36 dB (1 dB step) (Super Gain function installed: 37 dB to 42 dB)	Auto, 0 dB to 36 dB (1 dB step) (Super Gain function installed: 37 dB to 42 dB)	Auto, 0 dB to 36 dB (1 dB step) (Super Gain function installed: 37 dB to 42 dB)	Auto, 0 dB to 42 dB (3 dB step)	Auto, 0 dB to 42 dB (3 dB step)	Auto, 0 dB to 42 dB (3 dB step)	
Control	Serial / IP / IR	Serial / IP / IR	Serial / IP / IR	Serial / IP / IR	Serial / IP / IR	Serial / IP / IR / USB	Serial / IP / IR / USB	Serial / IP / IR / USB	IP / IR / USB	
Power	PoE++ ⁷ / XLR	PoE++ ⁷ / XLR	PoE++ ⁷ / XLR	PoE++ ⁷ / AC	PoE++ ⁷ / AC	PoE++ ⁷ / AC	PoE++ ⁷ / AC	PoE++ ⁷ / AC	PoE++ ⁷ / USB	
Current Consumption	5.0 A (XLR) 1.5 A (PoE++)	4.0 A (XLR) 1.2 A (PoE++)	4.0 A (XLR) 1.2 A (PoE++)	3.0 A (AC) 1.0 A (PoE++)	3.0 A (AC) 1.0 A (PoE++)	1.8 A (AC) 0.6 A (PoE++)	1.3 A (AC) 0.4 A (PoE++)	1.3 A (AC) 0.4 A (PoE++)	1.0 A (USB) 0.2 A (PoE)	
Weight ⁸	Approx. 4.6 kg (10.14 lbs)	Approx. 4.2 kg (9.24 lbs)	Approx. 4.1 kg (9.04 lb)	Approx. 2.3 kg (5.06 lb)	Approx. 2.0 kg (4.41 lbs)	Approx. 1.8 kg (3.97 lbs)	Approx. 1.9 kg (4.19 lbs)	Approx. 1.9 kg (4.19 lbs)	Approx. 0.5 kg (1.1 lb)	
Dimensions (W x H x D)	213.0 mm x 277.0 mm x 240.0 mm	213 mm x 267 mm x 219 mm	213 mm x 267 mm x 219 mm	169.2 mm x 204.6 mm x 170.6 mm	170.0 mm x 211.0 mm x 171.0 mm	160.0 mm x 192.1 mm x 166.0 mm	165.1 mm x 176.2 mm x 176.1 mm	165.1 mm x 176.2 mm x 176.1 mm	123 mm x 131 mm x 139 mm	
Mount Position	Invertible: Ceiling or Desktop ⁹	Invertible: Ceiling or Desktop ⁹	Invertible: Ceiling or Desktop ⁹	Invertible: Ceiling or Desktop ⁹	Invertible: Ceiling or Desktop ⁹	Invertible: Ceiling or Desktop ⁹	Invertible: Ceiling or Desktop ⁹	Invertible: Ceiling or Desktop ⁹	Invertible: Ceiling or Desktop ⁹	
PTZ										
Pan Range	± 175°	± 175°	± 175°	± 175°	± 175°	± 175°	± 170°	± 170°	± 110° (manual)	
Tilt Range ¹⁰	-30° to 210°	-30° to 210°	-30° to 210°	-30° to 210°	-30° to 90°	-30° to 90°	-30° to 90°	-30° to 90°	± 25° (manual)	
Pan / Tilt Speed	Maximum speed during manual: 0.08°/s to 180°/s 3 speed mode installed ¹¹	Maximum speed during manual: 0.08°/s to 180°/s 3 speed mode installed ¹¹	Maximum speed during manual: 0.08°/s to 180°/s 3 speed mode installed ¹¹	Maximum speed during manual: 0.08°/s to 180°/s Maximum speed during preset: 300°/s	Maximum speed during manual: 0.08°/s to 180°/s Maximum speed during preset: 300°/s	Maximum speed during manual: 0.08°/s to 180°/s Maximum speed during preset: 300°/s	Maximum speed during manual: 0.08°/s to 180°/s Maximum speed during preset: 200°/s ¹²	Maximum speed during manual: 100°/s Maximum speed during preset: 200°/s ¹²	-	
Operation Noise	NC35 or less (Normal use) NC25 or less (P/T standstill)	NC35 or less	NC35 or less	NC25 or less	NC25 or less	NC25 or less	NC40 or less (60°/s or less) NC55 or less (100°/s or higher)	NC40 or less (60°/s or less) NC55 or less (100°/s or higher)	-	
New Direct Drive System	-	-	-	✓	✓	✓	-	-	-	
New PTZ Mechanism	✓ (Built-in optical encoder)	-	-	-	-	-	-	-	-	
Video Output										
12G-SDI	✓	✓	-	✓	-	-	-	-	-	
3G-SDI	✓ ¹³	✓ ¹³	✓ ¹³	✓ ¹³	✓ ¹³	✓ ¹³ (AW-UE50W/K)	✓ ^{13,14}	✓ ^{13,14}	-	
HDMI	✓	✓	✓	✓	✓	✓	✓	✓	✓	
USB (UVC compatible)	-	-	-	-	-	✓ USB2.0 Type-C	✓ USB2.0 Type-C	✓ USB2.0 Type-C	✓ USB2.0 Type-C	
USB (5G mobile Router with USB Tethering Support)	✓ USB3.0	-	-	-	-	-	-	-	-	
IP	SMPTE ST 2110	✓ ²	-	-	-	-	-	-	-	
	SRT	✓	✓	✓	✓	✓	-	-	-	
	NDI® High Bandwidth ¹⁵	✓ 4K	-	-	✓ (4K)	✓ (FHD)	-	-	-	
	NDI® HX	✓ NDI® HX, 4K	✓ NDI® HX, FHD A license must be purchased for use.	✓ NDI® HX, FHD A license must be purchased for use.	✓ NDI® HX, FHD	✓ NDI® HX, FHD	✓ NDI® HX, FHD A license must be purchased for use. (AW-UE50W/K, AW-UE40W/K)	-	-	-
	RTMP/RTMPS	✓	✓	✓	✓	✓	✓	✓	✓	
RTSP/RTP etc.	✓	✓	✓	✓	✓	✓	✓	✓		
Optical Fiber	✓ ¹⁶	✓ ¹⁶	-	-	-	-	-	-	-	
Control										
Browser (PC/Mac/Mobile) via IP	✓	✓	✓	✓	✓	✓	✓	✓	✓	
USB	-	-	-	-	-	✓	✓	✓	✓	
Controller / Switcher Supported ¹⁷	AW-RP150 / AW-RP60 AV-UH5500	AW-RP150 / AW-RP60 AV-UH5500	AW-RP150 / AW-RP60 AV-UH5500	AW-RP150 / AW-RP60 AV-UH5500	AW-RP150 / AW-RP60 AV-UH5500	AW-RP150 / AW-RP60 AV-UH5500	AW-RP150 / AW-RP60 AV-UH5500	AW-RP150 / AW-RP60 AV-UH5500	AW-RP150 / AW-RP60 ¹⁸	
IR Remote Control ¹⁷	AW-RM50AG	AW-RM50AG	AW-RM50AG	AW-RM50AG	AW-RM50AG	AW-RM50AG	AW-RM50AG	AW-RM50AG	AW-RM50AG	
Remote Operation Panel (ROP/RCP) ¹⁷ *17	AK-HRP1010GJ / AK-HRP1015GJ AK-HRP250GJ	AK-HRP1010GJ / AK-HRP1015GJ AK-HRP250GJ	AK-HRP1010GJ / AK-HRP1015GJ AK-HRP250GJ	AK-HRP1010GJ / AK-HRP1015GJ AK-HRP250GJ	AK-HRP1010GJ / AK-HRP1015GJ AK-HRP250GJ	AK-HRP1010GJ / AK-HRP1015GJ AK-HRP250GJ	-	-	AK-HRP1010GJ / AK-HRP250GJ	
Software¹⁷										
Media Production Suite	Basic Functions	✓	✓	✓	✓	✓	✓	✓	✓	
	Auto Tracking Software Key AW-SF100/AW-SF200	✓ (Additional Fee)	✓ (Additional Fee)	✓ (Additional Fee)	✓ (Additional Fee)	✓ (Additional Fee)	✓ (Additional Fee)	-	-	
	Visual Preset Software Key AW-SF300	✓ (Additional Fee)	✓ (Additional Fee)	✓ (Additional Fee)	✓ (Additional Fee)	✓ (Additional Fee)	✓ (Additional Fee)	✓ (Additional Fee)	✓ (Additional Fee)	
	Video Mixer Software Key AW-SF400G	✓ (Additional Fee)	✓ (Additional Fee)	✓ (Additional Fee)	✓ (Additional Fee)	✓ (Additional Fee)	✓ (Additional Fee)	✓ (Additional Fee)	✓ (Additional Fee)	
SMPTE ST 2110 Activation Software Key AW-SFU60	✓ (Additional Fee)	-	-	-	-	-	-	-	-	
PTZ Virtual USB Driver	✓	✓	✓	✓	✓	✓	✓	✓	✓	
Features										
IP Streaming	✓	✓	✓	✓	✓	✓	✓	✓	✓	
Image Stabilization	Optical (O.I.S.), Electronic (E.I.S.) ¹⁹	Optical	Optical	Optical (O.I.S.), Electronic (E.I.S.) ¹⁹	Optical	Optical	-	-	-	
Night Mode (for IR)	✓	✓	✓	✓	✓	✓	-	-	-	
Dynamic Range Stretch (DRS)	✓	✓	✓	✓	✓	✓	✓	✓	✓	
Audio Input / Embedding	✓ (XLR x 2)	✓	✓	✓	✓	✓	✓	✓	-	
Internal Mic	-	-	-	-	-	-	-	-	✓ (Audio On/Off: Available)	
Color Temperature Adjustment	✓	✓	✓	✓	✓	✓	-	-	-	
Presets	Up to 100	Up to 100	Up to 100	Up to 100	Up to 100	Up to 100	Up to 100	Up to 100	Up to 100	
High Dynamic Range (HDR)	✓ (support BT.2020)	✓ (support BT.2020)	✓ (support BT.2020)	-	-	-	-	-	-	
V-Log	✓	✓	-	-	-	-	-	-	-	
Fanless Design	-	-	-	-	-	✓	✓	✓	✓	
Built-in ND Filters	Through, 1/4, 1/16, 1/64	Through, 1/4, 1/16, 1/64	Through, 1/4, 1/16, 1/64	Through, 1/4, 1/16, 1/64	Through, 1/4, 1/16, 1/64	-	-	-	-	
Optical Low-pass Filter	✓	✓	✓	✓	✓	✓	-	-	-	
Genlock	✓	✓	✓	✓	✓	✓	-	-	-	
Digital Noise Reduction (DNR)	✓ (Equipped with New Image Processing Engine)	✓	✓	✓	✓	✓	✓	✓	✓	
High-Speed Pan / Tilt Mode ²⁰	✓	✓	✓	✓	✓	✓	-	-	-	
HD Cropping	✓ (Cropping zoom is available.)	✓	-	✓ (Cropping zoom is available.)	-	-	-	-	-	
AR / VR Systems	FreeD ²¹	FreeD ²¹	-	FreeD ²¹	FreeD ²¹	-	-	-	-	
Privacy Mode	✓	-	-	✓	✓	✓	✓	✓	-	
Tally Lamp	✓ Front & Rear Tally / Red, Green, Yellow	✓ Red, Green	✓ Red, Green	✓ Red, Green	✓ Red, Green	✓ Red, Green	✓ Red	✓ Red	✓ Red	
USB: Video Conference mode ²²	-	-	-	-	-	✓	✓	✓	✓	
Waveform Display	✓	-	-	-	-	-	-	-	-	
Horizontal Level Gauge	✓	-	-	-	-	-	-	-	-	
Built-in Auto Tracking	-	-	-	-	✓	✓	-	-	-	
MSRP										

*1: JPEG logo by Masahito TAKIZAWA is licensed under Creative Commons Attribution-NoDerivatives 4.0 International Public License with disclaimer of warranties. The license can be found at <https://jpeg.org/contact.html>. *2: To use SMPTE ST 2110, need activation by SMPTE ST 2110 Supported Software Key AW-SFU60 (sold separately). *3: Microsoft and Microsoft Teams are trademarks or registered trademarks of Microsoft Corporation in the United States and/or other countries. *4: Effective size. *5: LDC is the abbreviation for Lens Distortion Correction. *6: HDMI output. *7: See the Panasonic website for information on Optional Products / Software (<https://pro-av.panasonic.net/en/support/#Compatibility-Chart>). *8: Excluding mount bracket. *9: To ensure safety, the unit must be secured using the mount bracket supplied. *10: Depending on the pan or tilt position, the camera may be reflected in the image. *11: Quietness, stationary accuracy, etc., in high-speed mode may vary from normal mode. *12: TILT 140°/s. *13: HD output is available from Video Format. *14: Embedded audio is not supported. *15: NDI® is a registered trademark of ViRt NDI AB in the United States and other countries. *16: SFP+ module purchased separately. Please reference brochure for recommended models. *17: IP only. *18: Unlike when other PTZ Cameras are connected, the display corresponds to the AW-UE4WG/KG menu structure. *19: This EIS works for the roll direction. *20: High-speed mode speeds vary by model. *21: A protocol that outputs camera tracking data for AR/VR systems. Camera pan, tilt, zoom and focus information required for uses such as AR/VR composition is output by devices that support this protocol. *22: USB: Video Conference mode is a specific mode for using Zoom. When using this mode, the tally lamp lights blue.

4K / HD Integrated Camera

High-end



Optical Zoom
20x

4K
PROFESSIONAL
HDR

ST 2110

JPEG
*1*2
XS

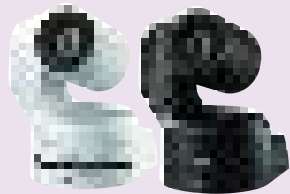
4K PTZ Camera for an era of enhanced creativity and the pursuit of visual expression

- The first PTZ Camera to support the SMPTE ST 2110 standard for video transmission over IP networks*3,4
- Industry's first 5G mobile router (with USB tethering support) support for high-speed, high-capacity video transmission
- High sensitivity of F14/2,000 lx, equivalent to a studio camera
- Supports 2x high-speed output
- Supports HDMI, 3G-SDI, and IP output (NDI® High Bandwidth*5, NDI® HX, etc.) as well as 12G-SDI output and fiber-optic output

4K Integrated Camera
AW-UE160W/K

High-end

4K 60p/50p*6 output, high-magnification zoom and wide-angle shooting for flexible video production



Optical Zoom
20x

4K
PROFESSIONAL
HDR

4K Integrated Camera
AW-UE150W/K

HD PTZ Camera that enables high-quality video production even in dark environments



Optical Zoom
20x

HD Integrated Camera
AW-HE145W/K
•EU and US only model

4K 60p/50p*6 NDI® High Bandwidth & SRT supported PTZ Camera with a compact body and a wide range of features



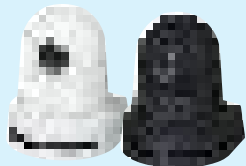
Optical Zoom
24x

4K
PROFESSIONAL
HDR

4K Integrated Camera
AW-UE100W/K

Standard

Models to respond to a wide range of video production needs, such as recording of reality shows and events

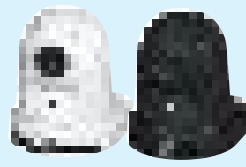


Optical Zoom
24x

4K
PROFESSIONAL
HDR

4K Integrated Camera
AW-UE80W/K

Standard models suitable for use in online classes and briefing sessions



4K
PROFESSIONAL
HDR

4K Integrated Camera
AW-UE50W/K
AW-UE40W/K

Optical Zoom
24x

zoom
Certified

NEW
4K Integrated Camera
AW-UE30W/K

Optical Zoom
20x

For outdoor use

4K/60p compatible, high resolution to prevent missed shots. Outdoor model that can shoot in any external environment



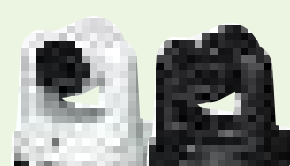
Optical Zoom
24x

4K
PROFESSIONAL
HDR

4K Outdoor Integrated Camera
AW-UR100

Entry

Compact 4K entry model suitable for use in meeting rooms and classrooms with limited space



Optical Zoom
12x

4K
PROFESSIONAL
HDR

4K Integrated Camera
AW-UE20W/K

Compact PTZ Camera suitable for use in meeting rooms and classrooms with limited space

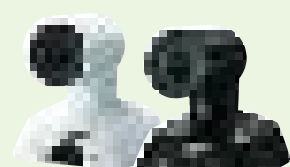


Optical Zoom
12x

zoom
Certified

HD Integrated Camera
AW-HE20W/K

Compact 4K PTZ Camera equipped with an ultra-wide-angle lens with a 111° field of view and perfect for fixed point shooting



4K
PROFESSIONAL
HDR

zoom
Certified

4K Integrated Camera
AW-UE4WG/KG
Certified for Microsoft Teams*7

Optional Products / Software

Remote Camera Controller / Wireless Remote Control

Remote Controller with high operability ensured through touch-panel GUI monitor and a new type of joystick



Remote Camera Controller
AW-RP150

Equipped with a GUI menu screen for clear visibility and a joystick for intuitive control



Remote Camera Controller
AW-RP60



Infrared Wireless Remote Control
AW-RM50AG

Switcher

4K/12G-SDI compatible compact integrated live switcher with high performance and easy operation



Live Switcher
AV-UHS500

Broadcast-quality video production with 10bit processing and easy operation. Active in streaming distribution and webinars



Compact Live Switcher
AV-HSW10

Remote Operation Panel (ROP)

These compact operation panels also support PoE* and IP control



Remote Operation Panel (ROP)
AK-HRP1010GJ
AK-HRP1015GJ*8

*Abbreviation of Power over Ethernet.

Compact operation panel also compatible with Studio Handy Cameras



Remote Operation Panel (ROP)
AK-HRP250GJ

- For more information about controllers, please visit here (https://pro-av.panasonic.net/en/products/compatibility_chart/).
- If you need information about Third Party Products, please visit each products' web site (<https://pro-av.panasonic.net/en/support/>).

Software

<p>NEW</p> <p>Media Production Suite <small>Free</small></p> <p>Software Platform for Smart Operation and Rich Expression</p> <p>Media Production Suite web site (https://pro-av.panasonic.net/en/software/mps/)</p>		
<p>Basic Functions</p>	<p>Device View <small>Free</small></p> <p>Manages network settings and firmware updates</p>	<p>PTZ Control <small>Free</small></p> <p>Controls multiple PTZ cameras from PC</p>
<p>Plug-ins (Additional Fee)</p>	<p>Auto Tracking Support from 2Q of CY2024</p> <p>Automatically tracks speaker and captures clear images</p> <p>Auto Tracking Software Key (license for one camera) AW-SF100</p> <p>Auto Tracking Software Key (license for multiple cameras) AW-SF200 AW-SF202 (2 additional licenses) AW-SF203 (3 additional licenses)</p>	<p>Visual Preset</p> <p>Switches subject of multiple PTZ cameras with a single click</p> <p>Visual Preset Software Key AW-SF300</p> <p>Video Mixer</p> <p>Diverse video compositions created easily with PC</p> <p>Video Mixer Software Key AW-SF400</p>
<p>SMPTE ST 2110 Activation Software Key*9 AW-SFU60</p>		<p>PTZ Virtual USB Driver <small>Free</small></p> <p>Converts PTZ camera on your network into Super Web cam</p>

PTZ Camera Systems web site (https://pro-av.panasonic.net/en/products/ptz_camera_systems.html)

IT/IP Platform KAIROS*10

<p>KAIROS Incredible Productivity</p>	<ul style="list-style-type: none"> • GPU/CPU-Based Live Video Production Platform with High Scalability • Flexible I/O Numbers, Video Formats, IP protocols and Basebands • Freely Expression by Unlimited Number of MEs and Output Aspect Ratio 	<p>4K PROFESSIONAL HDR</p> <p>ST 2110</p>
<p>IT/IP Platform KAIROS web site (https://pro-av.panasonic.net/en/products/it_ip_platform/)</p>		

*1: JPEG logo by Masahito TAKIZAWA is licensed under Creative Commons Attribution-NoDerivatives 4.0 International Public License with disclaimer of warranties. The license can be found at <https://jpeg.org/contact.html> *2: To use SMPTE ST 2110, need activation by SMPTE ST 2110 Supported Software Key AW-SFU60 (sold separately). *3: Activation with the separately sold software key AW-SFU60 is required. *4: As of October 2022, according to our research. *5: NDI® is a registered trademark of Vizrt NDI AB in the United States and other countries. *6: Actual output format is UHD (3840 x 2160) 59.94p/50p. *7: Microsoft and Microsoft Teams are trademarks or registered trademarks of Microsoft Corporation in the United States and/or other countries. *8: Not available in some areas. *9: AW-UE160W/K only. *10: The AW-UE160W/K, AW-UE150W/K, AW-UE100W/K, AW-UE80W/K, AW-UE50W/K, AW-UE40W/K and AW-UR100 are the only PTZ Cameras currently supported.