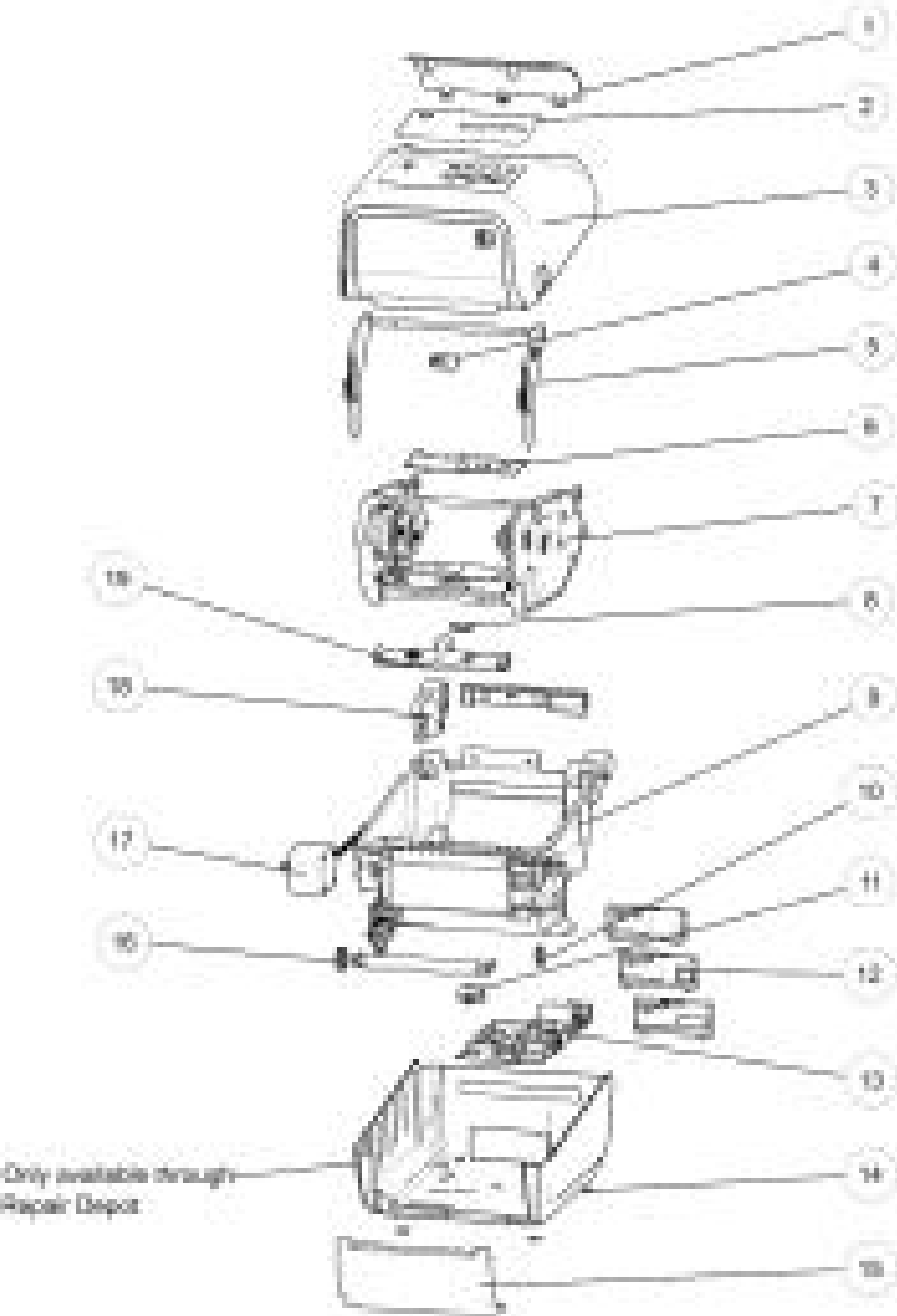


ZD420 Thermal Transfer (203 & 300 DPI)



## ZD420 Thermal Transfer (203 &amp; 300 DPI)

Item	Description	Part Number
1	Media Window	P1080383-200
2	Nameplate (contains nameplates with and without the Print Touch icon)	P1080383-201
3	Co er !ssem"l# \$or %tandard Models with the Print Touch icon (includes Media Window) Co er !ssem"l# \$or %tandard Models without the Print Touch icon (includes Media Window) Co er !ssem"l# \$or ( ealthcare Models with the Print Touch icon (includes Media Window)	P1080383-20& P1080383-20 ' P1080383-20)
&	*i" "on +ut %ensor	P1080383-01&
'	,atch !ssem"l#	P1080383-20-
)	Control Panel PC . ! (without , C /)	P1080383-208
-	*i" "on Carria0e	P1080383-201
8	2pper Media %ensor (3ap %ensor Mo ea"le)	P1080383-210
1	Print Mechanism 203dpi Print Mechanism 300dpi	P1080383-211 P1080383-212
10	Co er +pen %ensor	P1080383-0&&
11	,ower Media %ensor ( .lac4line %ensor)	P1080383-012
12	* ear . e5els6 %erial7 8thernet7 %tandard (includes 1 o\$ each)	P1080383-020
13	Main ,o0ic .oard7 2% .7 2% . ( ost7 Modular Connecti it# %lot Main ,o0ic .oard7 2% .7 2% . ( ost7 .luetooth7 Modular Connecti it# %lot Main ,o0ic .oard7 2% .7 2% . ( ost7 .luetooth7 8thernet7 Modular Connecti it# %lot Main ,o0ic .oard7 2% .7 2% . ( ost7 .luetooth7 Wi9i 802:11ac7 Modular Connecti it# %lot	P1080383-2'0 P1080383-2' & P1080383-2' 2 P1080383-2' 3
1&	*u" "er 9eet (set o\$ &)	P1080383-021
1'	9ront . e5el7 %tandard	P1080383-011
1)	Platen *oller 203dpi Platen *oller 300dpi . earin0s \$or the platen roller7 , e\$t ; *i0ht (10 each)	P1080383-222 P1080383-223 P1080383-22&
1-	Motor !ssem"l#	P1080383-221
18	Co ers \$or ( in0e (includes side and rear hin0e co ers)	P1080383-22'
11	Printhead7 203dpi Printhead7 300dpi	P1080383-22) P1080383-22-
Not %hown	2p0rade <it - Cutter7 &=7 9ull Cut	P1080383-228
	/ ispenser7 9ront . e5el	P1080383-018
	Media Core !daptors7 9or 1:'>7 2= ; 3= diameter cores	P1080383-022
	8thernet Module	P1080383-&&2
	%erial Module	P1080383-&&3
	Con ert to 300dpi	P1080383-221
	Con ert to 203dpi	P1080383-230
	*i" "on Core !dapters used to accept 1 inch diameter ri" "on cores (1 set)	P1080383-231
	. ase (ousin0 \$or the .atter# (When up0radin0 to "atter# power \$unctionalit#7 also order the P1080383-)03 "atter#)	P1080383-)00
	.atter# \$or / es4top Printers (When up0radin0 to "atter# power \$unctionalit#7 also order the P1080383-)00 "atter# housin0)	P1080383-)03
	!dapter "rac4et that ena"les mountin0 a ? / &20T model in the same location as an e@istin0 3 <&20t model is currentl# mounted: !llows usa0e o\$ the 3 <&20t mountin0 hole pattern to mount a ? / &20T:	P1080383-03-
	%hippin0 Pac4 - Pac4a0in0 \$or shippin0 the printer	P1080383-232
	Power %uppl# 2nattached7 - 'W7 C137 with 2% ; 8uro Cords \$or %tandard Models	P10-1103-02)
	Power %uppl# 2nattached7 - 'W7 2&A with 2% Cord7 \$or ( ealthcare Models	P10-1103-030
	Power %uppl# !ttached7 - 'W (power cord not included)	P1080383-23&
	Power Cord7 2:=%: 120A B8C320C13 (set o\$ ')	10'1'0-01&
	Power Cord7 8uro 220A B8C320C13 (set o\$ ')	10'1'0-01'
	Power Cord7 2:<: 2&0A B8C320C13 (set o\$ ')	10'1'0-030
	Power Cord7 !ustralia 2&0A B8C320C13 (set o\$ ')	10'1'0-021
	Power Cord7China 220A C13 (set o\$ ')	10'1'0-0-8
	Power Cord7 Capan 12' A C!P!N C13 (set o\$ ')	10'1'0-0-1
	Power Cord7 220A !r0entina C13 (set o\$ ')	10'1'0-080
	Power Cord710! N. * 1&13)7 .ra5il (set o\$ ')	P1033&01
	Power Cord7 C137 10!7 B8C B8rae! (set o\$ ')	P10)1022-020
	Power Cord Bndia7 10!7 B% 12137 C13 (set o\$ ')	P1080821
	Power Cord7 Taiwan7 12' A7 B8C320C13 (set o\$ ')	P10-1103-03'