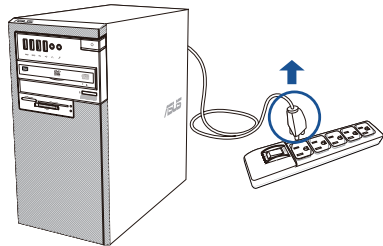


Fast. Easy. Setup!

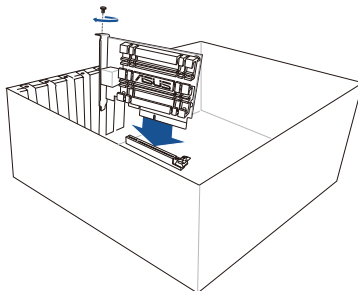


1 Hardware Installation

Turn off your computer, unplug the power cord, and open the system cover.



Insert the XG-C100C network card into the PCI-E network slot, ensuring that it is completely seated on the slot.

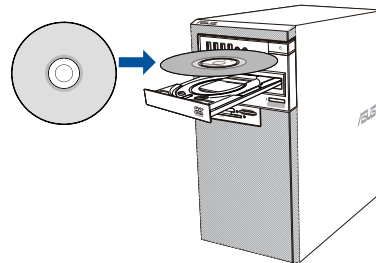


This device complies with Part 15 of the FCC Rules. Operation is subject to the following two conditions:
(1) this device may not cause harmful interference, and (2) this device must accept any interference received, including interference that may cause undesired operation.

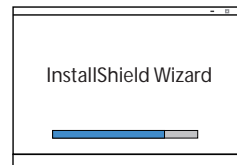
2 Driver Installation

Turn on your computer. Insert the support CD into the optical drive or download the driver from:

https://www.asus.com/Networking/XG-C100C/HelpDesk_Download/

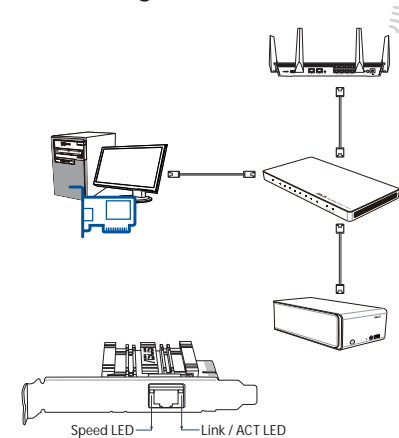


Follow the onscreen instruction to finish the driver installation.



3 Wired Connection

Connect devices to the RJ-45 port on XG-C100C using Cat5e, Cat6, Cat6a or higher network cables.



Speed LED (Left LED / Dual color)

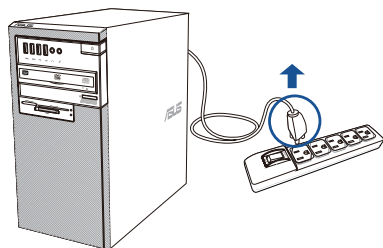
10G	Green
5G / 2.5G / 1G / 100 M	Yellow
Link / ACT LED (Right LED / Single color)	
10G / 5G / 2.5G / 1G / 100M	Blinking Green (transferring/receiving data)
No Traffic	Green

Rápido. Sencillo. ¡Configurado!

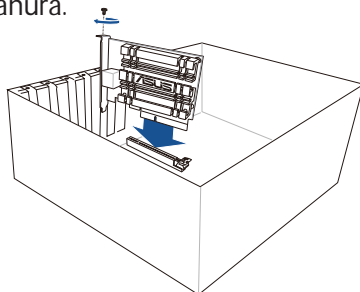


1 Instalación del hardware

Apague el equipo, desenchufe el cable de alimentación y abra la tapa del sistema.

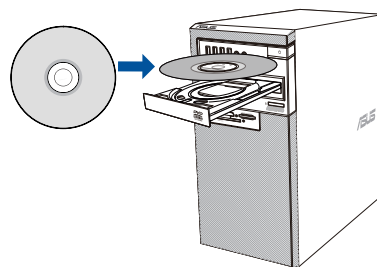


Inserte la tarjeta de red XG-C100C en la ranura de red PCI-E y asegúrese de que está completamente asentada en dicha ranura.

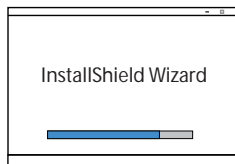


2 Instalación del controlador

Encienda el equipo. Inserte el CD de soporte en la unidad óptica o descargue el controlador desde: https://www.asus.com/Networking/XG-C100C/HelpDesk_Download/

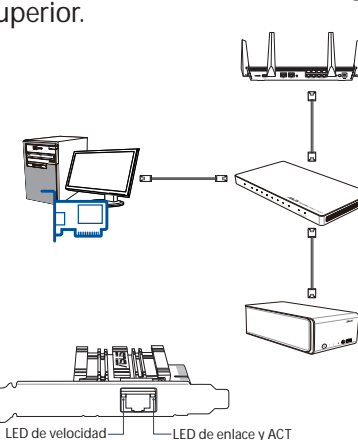


Siga las instrucciones de la pantalla para finalizar la instalación del controlador.



3 Conexión cableada

Conecte dispositivos al puerto RJ-45 de XG-C100C mediante cables de red Cat5e, Cat6, Cat6a o de categoría superior.



LED de velocidad (LED izquierdo/color dual)

10G	Verde
5G / 2.5G / 1G / 100 M	Amarillo
LED de enlace/ACT (LED derecho/un solo color)	
10G / 5G / 2.5G / 1G / 100M	Verde intermitente (transmitiendo y recibiendo datos)
No hay tráfico	Verde