



JLAB
JBUDS
ERGONOMIC
MOUSE

We love that you are rocking JLab!
We take pride in our products and fully stand behind them.



YOUR WARRANTY

All warranty claims are subject to JLab authorization and at our sole discretion. Retain your proof of purchase to ensure warranty coverage.



CONTACT US

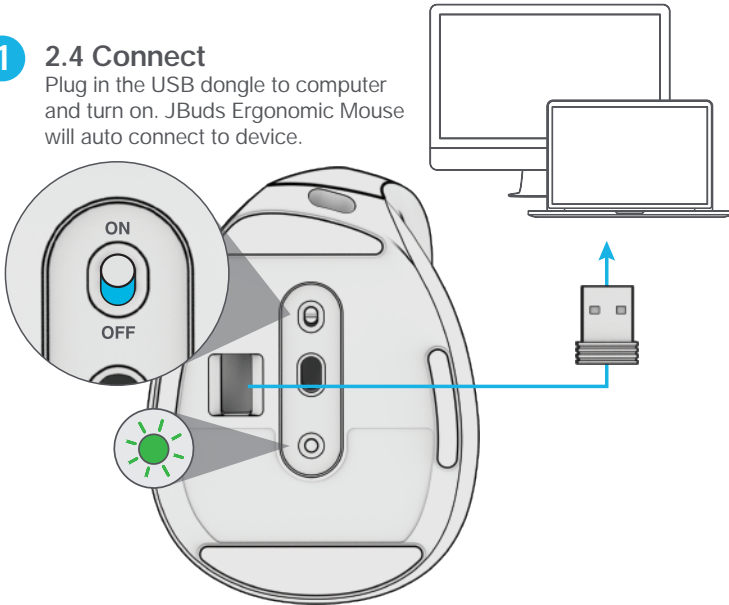
Reach out to us at support@jlab.com or visit jlab.com/contact

REGISTER TODAY
jlab.com/register
Product updates | How-to tips
FAQs & more

SETUP

1 2.4 Connect

Plug in the USB dongle to computer and turn on. JBuds Ergonomic Mouse will auto connect to device.



2 Bluetooth Connect

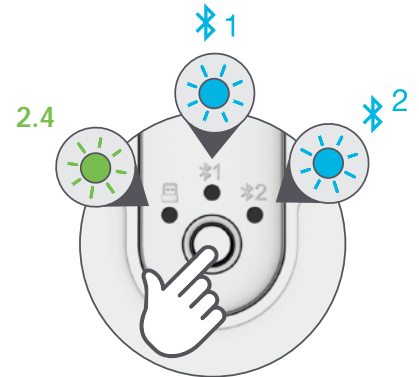
Quick Press to toggle to **1** or **2**
Then **Press Hold** to enter Pairing Mode (Flashing light)
Select "JBuds Ergo Mouse" in device settings

QUICK PRESS
TO TOGGLE

PRESS HOLD
TO PAIR

PAIRING
MODE:
Flashing

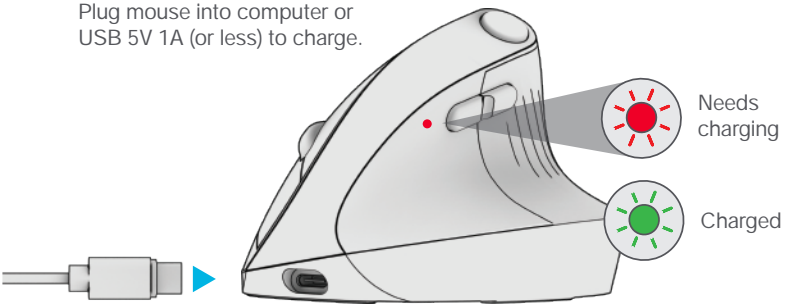
PAIRED:
Solid



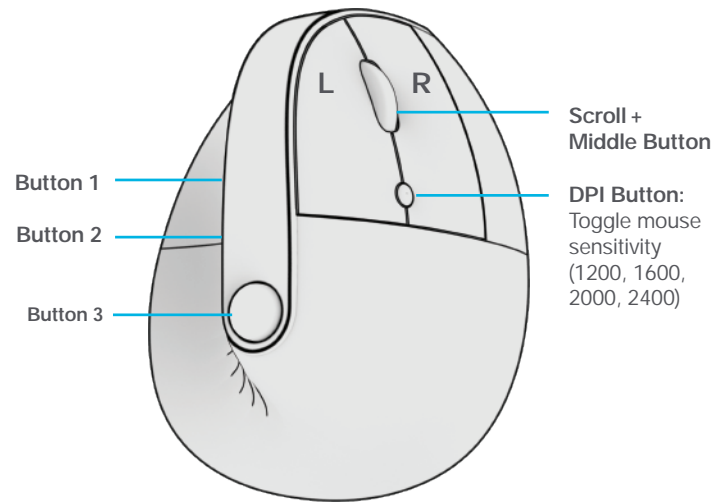
Have a JLab Epic or JBuds Keyboard?
Scan the QR code to learn how to pair both your devices with just one dongle.

CHARGING

Plug mouse into computer or USB 5V 1A (or less) to charge.



INTERFACE



Download JLab Work App (for Mac and PC) to fully customize JBuds Ergonomic Mouse at:

JLAB.COM/SOFTWARE



(Plug 2.4 dongle in to customize software)



[Shop products](#) | [Product alerts](#) | [Burn-in your headphones](#)

JLab Store + Burn-in Tool

