

ATRIA

WI-FI MESH AX3000 ADD-ON



Extend your Strong Mesh AX3000 network!

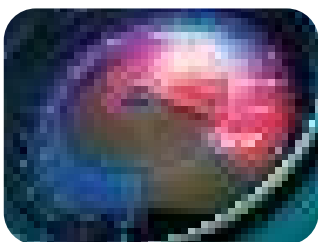
ATRIA Wi-Fi Mesh AX3000 ADD-ON can be used as an add-on to ATRIA Wi-Fi Mesh Kit AX3000. It brings up to 175 m² additional coverage of a super-fast and seamless roaming Wi-Fi network at a speed up to 3000 Mbps.

You can connect up to 6 Mesh AX3000 together to cover up to 1050 m² in multiple rooms with a Wi-Fi that simply works! State of art Easy Mesh solution combined with the powerful Wi-Fi 6 (802.11ax) MU-MIMO and OFDMA technologies bring ultimate speed, coverage, and connectivity to your home network.

ATRIA Mesh AX3000 can alternatively be used as an outstanding Wi-Fi 6 (802.11ax) MU-MIMO dual band Access Point or Router at speeds up to 3000 Mbps to immediately improve the Wi-Fi of your existing single band modem without changing the modem. Three (3) Gigabit WAN/LAN Ethernet ports are available to connect any of your network compatible devices to the Internet such as Smart TV, desktop, game console, NAS, media player, Android TV, Apple TV®



Wi-Fi performance



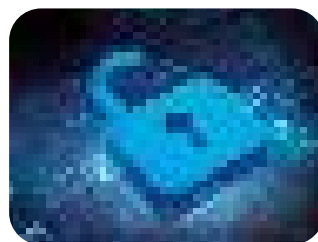
- Supports Wi-Fi 6 (802.11ax/ac/n/g/n/b/a) standards
- Speed up to 3000 Mbps
- Support MU-MIMO and OFDMA technologies 574 Mbit/s @2.4GHz + 2402 Mbit/s @5GHz
- Supports 5 GHz DFS Channels

Coverage & Reliability



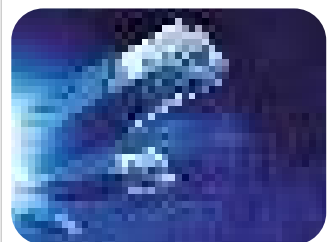
- Easy MESH Support for maximum coverage, performance and connectivity
- Up to 254 connected devices capacity
- Multiple Access Points Configuration
- Only one Wi-Fi name all over the house
- Intelligent roaming in Mesh configuration
- Wi-Fi Mesh AX3000 ADDON covers up to 175 m²
- Up to 6x ATRIA Mesh AX3000 cover up to 1050 m² on multiple rooms

Security



- WPA™/WPA2™/WPA3™ for Wi-Fi security
- Connect & Secure (WPS) button to add ATRIA Mesh AX3000 ADD-ON to your existing Mesh network in minutes
- Connect & Secure (WPS) button to simply connect your Wi-Fi devices to your Wi-Fi Mesh network

Connections



- 3x Gigabit Ethernet ports on each ATRIA Mesh AX3000 to connect any computer, set-top-box, Smart TV, NAS, game console, ...
- TR069/TR098/TR181 compliant
- Compatible with the ATRIA Mesh app to manage your Wi-Fi Mesh network at a finger touch
- Mesh/Access Point/Router operational modes
- Works with any standard modem or router

WI-FI MESH AX3000 ADD-ON

Wi-Fi

Frequency	2.4 GHz and 5 GHz concurrent
Standards	Wi-Fi 6 - IEEE 802.11ax/ac/n/g/b/a
Signal Rate	5 GHz: Up to 2402 Mbps 2.4 GHz: Up to 574 Mbps
Security	WPA™/WPA-PSK™ & WPA2™/WPA2-PSK™ & WPA3- SAE™
Antennas	4*3dBi Internal Antennas
Transmit Power Europe:	<20 dBm (2.4 GHz), <23 dBm (5 GHz)
Supported Channels	5 GHz: 36, 40, 44, 48, 52, 56, 60, 64, 100, 104, 108, 112 2.4 GHz: 1, 2, 3, 4, 5, 6, 7, 8, 9, 10, 11, 12, 13

Hardware

CPU	Dual-core CPU 900MHz
Ethernet Ports	2x Gigabit Ethernet LAN Ports + 1x Gigabit Ethernet WAN/LAN Port
Buttons	Connect & Secure (WPS), Reset, Power on/o
LEDs	Power, Internet, Pairing, 2.4 GHz and 5 GHz
Power	External power supply, 12V/2 A DC
Standards	IEEE 802.3, IEEE 802.3u, IEEE 802.3ab, IEEE 802.11

Software

Multiple SSID	4x 2.4 GHz + 4x 5 GHz
Basic Network	DHCP client, IGMP v1/v2, IPv4/v6, WPS, WMM
Router Features	DHCP server, DNS relay/proxy, NAT/NAPT, IGMP proxy, Firewall, VPN pass through, DMZ, URL/IP/MAC Filtering, Port Forwarding
UPnP	Universal Plug & Play Internet Gateway Device
Management	TR069/TR098/TR181, Web User Interface, Time Settings, Con guration Backup/Restore, Firmware Upgrade, System Log
ATRIA Mesh app	Android and iOS downloadable app to manage the Wi-Fi Mesh network

Mesh technology

Easy MESH Compliant	Automatically Organized Network Intelligent Roaming (client and band steering) Auto Con guration Seamless Roaming Auto MESH Routing Auto Healing (Redundancy and Fail-over) Up to 6x ATRIA Mesh AX3000 in one Mesh Network Only one Wi-Fi name all over the house Mesh nodes can also be connected through Ethernet for better performances
Multiple Access Points architecture	
Unique Wi-Fi name	
Ethernet backhaul	

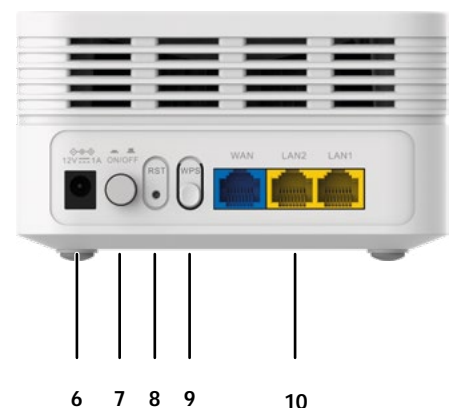
Other specifications

Certi cation	CE
Package Contents	1x ATRIA Mesh AX3000 1x Power Supply Unit (12V/2 A DC) 1x CAT5E Ethernet Cable 1x Installation Instructions, Warranty Card, Internet Browser
System Requirements	

Environment

Operating temperature	0° C ~ +45° C
Storage temperature	-20° C ~ +70° C
Operating humidity	10%~90% non-condensing
Storage humidity	10%~90% non-condensing
Dimensions (WxDxH) per unit	128 x 128 x 73 mm
Weight per unit	320 g

1. Power LED
2. Pairing LED
3. Internet LED
4. 2.4 GHz LED
5. 5 GHz LED
6. Power supply connector
7. On/O Power button
8. Reset button
9. Connect & Secure (WPS) button
10. 3x Gigabit LAN/WAN Ethernet ports



EAN MESHAX3000ADD: 9120072374890

PCB: 6