

Installation Guide

Insight Managed WiFi 6 AX1800
Outdoor Dual Band Access Point
Model WAX608Y



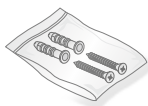
Package contents



Outdoor Access Point Model WAX608Y



Pole mounting strap



Wall-mount screws and anchors

The package also includes a screw placement guide and the installation guide.

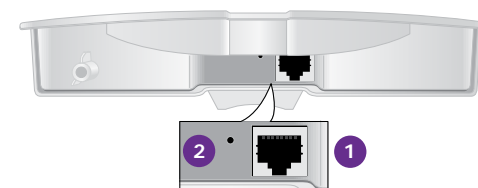
NOTE: The access point does not provide nor require a power adapter. You power up the access point (AP) only by connecting it to an Ethernet cable to a PoE+ switch.

WARNING: If you use a PoE+ switch that is located indoors to power the AP, you must have a PoE+ Ethernet surge protector on the cable that connects the indoor switch to the WAX608Y access point located outdoors.

CAUTION: Terms of Use
This device must be professionally installed. It is the installer's responsibility to follow local country regulations including operations within legal frequency channels, output power and DFS requirements. Vendor or Reseller or Distributor is not responsible for illegal wireless operations. Please see Device's Terms and Conditions for more details.

Overview

Bottom view with cover removed



- 1 LAN/PoE+ port
- 2 Reset button

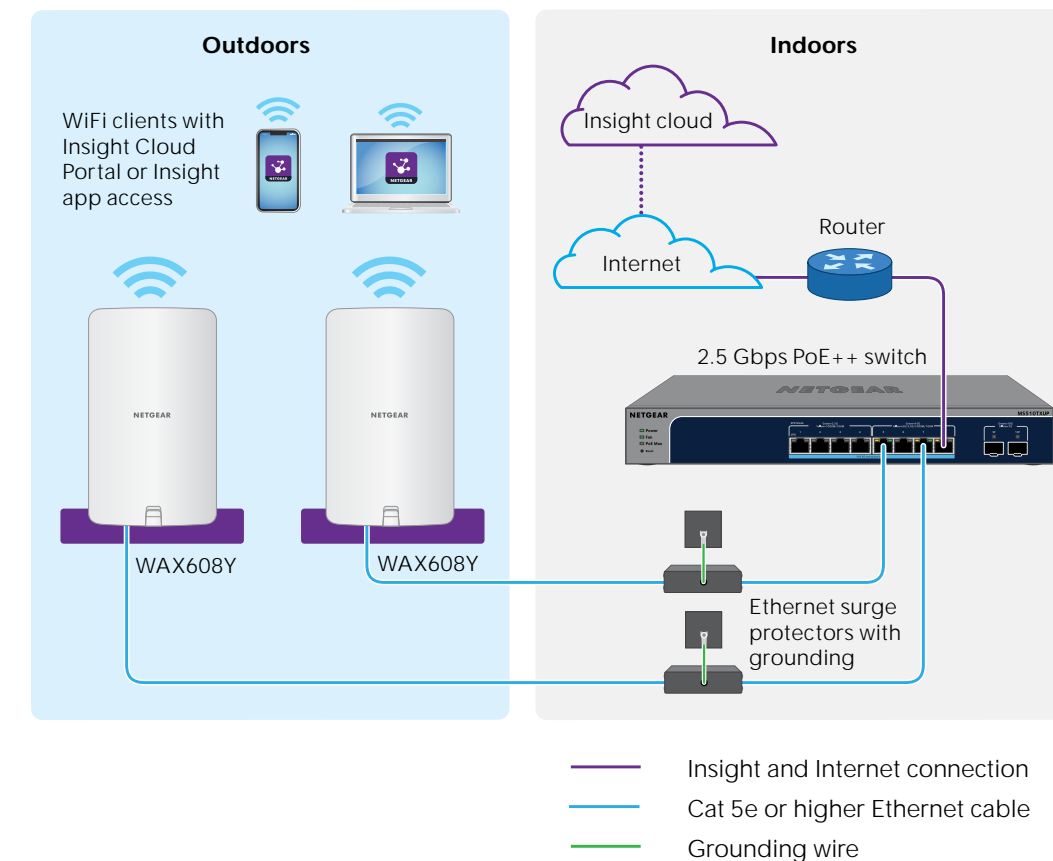
Right side view with LEDs



- 3 Power/Cloud LED
- 4 LAN LED
- 5 2.4 GHz WLAN LED
- 6 5 GHz WLAN LED

1. Connect to power and the Internet

Sample connections



Power up the WAX608Y access point (AP) by connecting the LAN/PoE+ port to a PoE+ switch that supplies 802.3at (PoE+) power. The LAN/PoE+ port is on the bottom behind the cover.

- If needed, obtain a PoE+ Ethernet surge protector.
If you use a PoE+ switch that is located indoors, you must use a PoE+ Ethernet surge protector (not supplied) on the cable from the switch to the AP located outdoors. The preceding figure shows such a setup.
- Use the latch on the front of the AP to open the cover.
Carefully pull the latch toward you and pull the cover downward so that it slides out of the enclosure. The LAN/PoE+ port is now accessible.
- Connect the LAN/PoE+ port to a PoE+ switch.
Make sure that the switch has Internet connectivity.

If connected to 2.5 Gbps equipment, the WAX608Y LAN/PoE+ port supports Ethernet speeds up to 2.5 Gbps within your LAN. The preceding figures show a NETGEAR MS510TXUP switch, which supports speeds of 2.5 Gbps and higher, as well as PoE+. If your Internet connection, modem, router, and switch support a speed of 2.5 Gbps, the AP's Internet connection also functions at 2.5 Gbps. Otherwise, the Internet connection functions at 1 Gbps, which is a common speed.

NOTE: The AP receives an IP address from a DHCP server (or a router that functions as a DHCP server) in your network. If your network does not include a DHCP server, the AP uses its default IP address: 192.168.0.100.

After starting up and during setup, the AP's LEDs can light in these colors:

Power/Cloud		Solid amber initially and then blinking amber slowly: The AP is starting, the firmware is being upgraded, or the AP is trying to get an IP address.
		Solid green: The AP completed start up and is functioning either as an Insight-discovered AP that is not currently connected to the Insight cloud or as a standalone AP.
		Solid blue: The AP is functioning in Insight mode and is connected to the Insight cloud.
LAN (one of two speed options)		Solid green: The LAN port detects a speed of 2.5 Gbps.
		Solid amber: The LAN port detects a speed of less than 2.5 Gbps, such as 1 Gbps (which is a common speed).
2.4 GHz WLAN 5 GHz WLAN		Solid green: The radio is operating without clients.
		Solid blue: The radio has at least one connected client.
		Blinking blue: The radio is processing traffic.

For more information about the LEDs, see the user manual, which you can download by visiting netgear.com/support/download.

2. Getting started with NETGEAR Insight™

Your new Insight-manageable device comes with Insight included, offering remote management of all Insight manageable devices on your network and real-time network status notifications.

Choose the type of account you want:

- Insight Premium** supports a single admin and multiple locations
- Insight Pro** supports multiple admin roles and groups locations into organizations

Use either of these options to access Insight and onboard your Insight device:

- Insight Cloud Portal** is your go-to management platform with an extensive set of tools and options including the Topology Viewer. Onboard devices by entering serial numbers and complete configuration in one place. Pro accounts can use bulk upload to onboard multiple devices at once.
- NETGEAR Insight app** is a convenient way to monitor your network on the go, and offers an alternative way to onboard devices by scanning the barcode.

For more information on Insight, visit the NETGEAR website:

- netgear.com/business/services/insight/subscription/
- kb.netgear.com/000061848

3. Log in or create an Insight account

Your NETGEAR account is also your Insight account. You can use your NETGEAR account credentials to log in as an Insight Premium user, or if you upgrade to an Insight Pro account, as an Insight Pro user.

If you do not already have an NETGEAR Insight account, you can create an account now. For information about creating an Insight Premium or Pro account, or upgrading an existing Insight Premium to a Pro account, visit kb.netgear.com/000044343.

Continued on next page



201-30553-02

September 2023

NETGEAR, Inc.
350 East Plumeria Drive
San Jose, CA 95134, USA

NETGEAR INTERNATIONAL LTD
Floor 6, Penrose Two,
Penrose Dock, Cork,
T23 Y09, Ireland

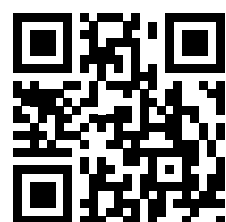
4. Onboard your device to NETGEAR Insight

NOTE: If you do not see your country/region listed, upgrade to the latest firmware.

Choose the method that you want to use to onboard your device:

- A. [Onboard via the NETGEAR Insight Cloud portal](#)
- B. [Onboard via the NETGEAR Insight app](#)

Insight Cloud Portal
insight.netgear.com



A. Onboard via the NETGEAR Insight Cloud portal

- Make sure that the AP is connected to the Internet.
- On a tablet or computer, scan the QR code for the Insight Cloud Portal or visit insight.netgear.com/.
- Enter the email address and password for your NETGEAR account and click the **NETGEAR Sign In** button.
- For Insight Pro, select the organization to which you want to add the AP.
- Select the network location, or create a new network location.
- Click the **+** (**Add Device**) button.
NOTE: Insight Pro users can either add a single device or add multiple Insight managed devices by uploading a device list as a CSV file.
- In the Add New Device pop-up page, enter the AP's serial number and MAC address, and then click **Go**.
- After Insight verifies that the AP is a valid product, you can optionally change the device name of the AP, and then click **Next**.

When the AP is successfully added to the portal, a page displays a confirmation that setup is in progress.

B. Onboard via the NETGEAR Insight app

- Connect your mobile device to the AP's setup SSID (WiFi network name) using one of these methods:
 - Scan the QR code:** Scan the QR code on the AP label to connect to the setup SSID.
 - Connect manually:** The setup SSID is on the AP label and is shown in the format NETGEARxxxxxx-SETUP, where xxxxxx are the last six digits of the AP's MAC address. The default WiFi passphrase is **sharedsecret**.
- Open the NETGEAR Insight app.
- Enter the email address and password for your account and tap **LOG IN**.
- Add a new network location where you want to add the AP by tapping the **Next button**, and then tapping **OK**. You can also select an existing network location.
The device admin password that you entered for the new network location replaces the existing admin password on all devices that you add to the network location.
In most situations, Insight detects the AP automatically, which can take several minutes.
- To add the AP to your network location, do one of the following:
 - If the AP is automatically detected and listed in the Insight Manageable Devices section, tap the icon for the AP, and then tap the **ADD DEVICE** button.
 - If the AP is not automatically detected, or you prefer to use another method to add the AP, tap the **+** icon in the top bar, and do one of the following:
 - Tap the **SCAN BARCODE OR QR CODE** button, and then scan the AP's code.
 - Tap the **Enter Serial Number and MAC Address** link, and then manually enter the AP's serial number and MAC address.
- If prompted, name the AP and tap the **Next** button.

Results

The AP automatically updates to the latest Insight firmware and Insight location configuration. This might take up to 10 minutes, during which time the AP restarts.

The AP is now connected to the Insight cloud-based management platform. The Power/Cloud LED lights solid blue.

If the AP does not show as Connected in Insight, visit kb.netgear.com/000065137.

Mounting options

You can mount the AP to a wall. The package includes two screws, two washers, and a paper screw placement guide.

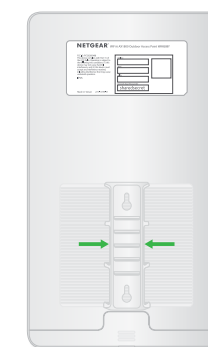
You can also mount the AP to a pole. The package includes a pole mounting strap.

NOTE: Before you mount the AP at a permanent location outdoors, we recommend that you configure the AP for your network environment and test your setup.

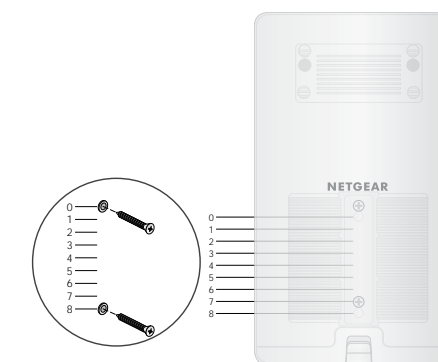
Mount to a wall

CAUTION: Make sure that the wall is not damaged.

The back of the AP provides two holes for wall mounting. The arrows in the following figure show the holes.



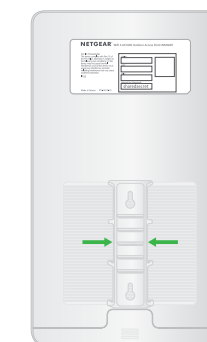
- Using the screw placement guide, mark the location for the holes on the wall where you want to mount the AP.
The holes must be 3.15 in. (80 mm) apart, center to center.



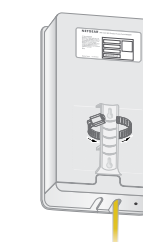
- Drill holes into the wall for the two anchors in which you will insert the screws.
The screws and anchors are in a plastic bag in the package.
- Insert the anchors into the wall and tighten the screws with a No. 2 Phillips screwdriver.
Leave about 0.25 in. (6 mm) of each screw protruding from the wall so that you can insert the screws into the holes on the back of the AP.
- Line up the holes on the back of the AP with the screws in the wall and mount the AP to the wall.

Mount to a pole

The back of the AP provides openings for the pole mounting strap. The arrows in the following figure show the middle opening.



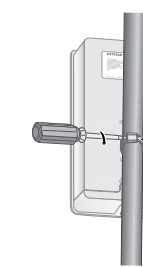
- Using a screwdriver, open the supplied pole-mounting strap.
- Insert the strap through one of the openings on the back of the AP.



- With the strap still open, wrap the strap with the attached AP around the pole.
- Close the strap but do not tighten it.



- Move the strap with the AP attached to its permanent position.
- Using the screwdriver, tighten the screw to secure the strap and AP to the pole.



Support and Community

Visit netgear.com/support to get your questions answered and access the latest downloads.

You can also check out our NETGEAR Community for helpful advice at community.netgear.com.

Regulatory and Legal

Si ce produit est vendu au Canada, vous pouvez accéder à ce document en français canadien à netgear.com/support/download/.

(If this product is sold in Canada, you can access this document in Canadian French at netgear.com/support/download/.)

For regulatory compliance information including the EU Declaration of Conformity, visit netgear.com/about/regulatory/.

See the regulatory compliance document before connecting the power supply.

For NETGEAR's Privacy Policy, visit netgear.com/about/privacy-policy.

By using this device, you are agreeing to NETGEAR's Terms and Conditions at netgear.com/about/terms-and-conditions. If you do not agree, return the device to your place of purchase within your return period.

Applicable to 6 GHz devices only: Only use the device indoors. The operation of 6 GHz devices is prohibited on oil platforms, cars, trains, boats, and aircraft, except that operation of this device is permitted in large aircraft while flying above 10,000 feet. Operation of transmitters in the 5.925-7.125 GHz band is prohibited for control of or communications with unmanned aircraft systems.