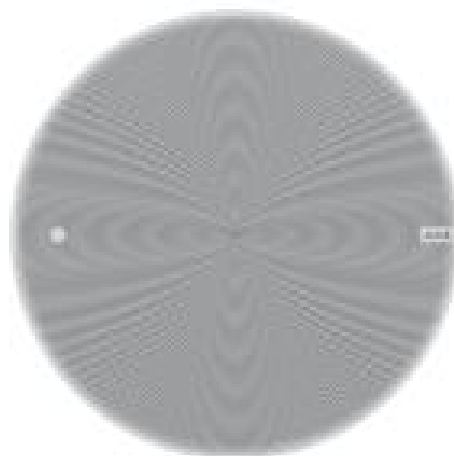


AXIS C1210-E Network Ceiling Speaker

Discrete in-ceiling installation—large

AXIS C1210-E is an all-in-one speaker system that makes voice announcements and background music smart and easy. It connects to standard network using one cable for both power (PoE) and connectivity. AXIS C1210-E offers flexible, discrete recessed ceiling installation, ideal for indoor environments but can also be used for protected outdoor areas like under the eaves. Additionally, it features a backbox that meets plenum requirements. It offers easy integration with your video management software (VMS), VoIP telephony, analytics, and more. Including a preconfigured digital signal processor (DSP) it produces clear voice every time. It also features a built-in microphone enabling remote health testing and 2-way audio talk-back. Furthermore, the embedded audio management software supports user, content, zone, and scheduling management.

- > [All-in-one speaker system](#)
- > [Connects to standard network](#)
- > [Easy installation with just one network cable \(PoE\)](#)
- > [Scalable and easy to integrate](#)
- > [Remote health testing](#)



AXIS C1210-E Network Ceiling Speaker

Audio hardware

Enclosure	One way enclosure with 6,5 inches broadband dynamic cone speaker
Max sound pressure level	96 dB
Frequency response	40 Hz - 20 kHz
Coverage pattern	130° coaxial
Audio input/output	Built-in microphone (can be disabled) External microphone, Line in
Built-in microphone specification	50 Hz - 20 kHz
Amplifier description	Built-in 7 W Class D amplifier
Digital signal processing	Built-in and pre-configured

Audio management

AXIS Audio Manager Edge	<p>Built in:</p> <ul style="list-style-type: none"> Content management for music and live/pre-recorded announcements. Scheduling to decide when and where to play specific content. Content prioritization to ensure urgent messages interrupt the schedule. Zone management allowing you to divide up to 200 speakers into 20 zones. Health monitoring for remote discovery of system errors. User management to control who has access to what features. See separate datasheet for more details.
AXIS Audio Manager Pro	For larger and more advanced systems. Sold separately. See separate datasheet for specifications.

Audio software

Audio streaming	One-way/two-way with optional half-duplex echo cancellation. Mono.
Audio encoding	AAC LC 8/16/32/48 kHz, G.711 PCM 8 kHz, G.726 ADPCM 8 kHz, Axis μ -law 16 kHz, WAV, MP3 in mono/stereo from 64 kbps to 320 kbps. Constant and variable bit rate. Sampling rate from 8 kHz up to 48 kHz.

System on chip (SoC)

Model	i.MX 6SoloX
Memory	512 MB RAM, 512 MB Flash

Network

Security	IP address filtering, HTTPS ^a encryption, IEEE 802.1X ^a network access control, user access log, Centralized Certificate Management
Network protocols	IPv4/v6 ^b , HTTP, HTTPS ^a , SSL/TLS ^a , QoS Layer 3 DiffServ, FTP, SFTP, CIFS/SMB, SMTP, Bonjour, UPnP TM , SNMP v1/v2c/v3 (MIB-II), DNS, DynDNS, NTP, RTSP, RTP, TCP, UDP, IGMPv1/v2/v3, RTCP, ICMP, DHCP, ARP, SOCKS, SSH, NTCIP, SIP (Cisco, Avaya, Asterisk)

System integration

Application Programming Interface	Open API for software integration, including VAPIX [®] . One-click cloud connection, AXIS Camera Application Platform (ACAP).
VoIP	<p>Support for Session Initiation Protocol (SIP) for integration with Voice over IP (VoIP) systems. Peer to peer or integrated with SIP/PBX.</p> <p>Tested with: SIP client such as Cisco, Bria and Grandstream and PBX suppliers such as Cisco and Asterisk.</p> <p>Supported SIP features: secondary SIP server, IPv6, SRTP/RTSPS, SIPS, SIP TLS, DTMF (RFC2976 and RFC2833), NAT (ICE, STUN, TURN)</p> <p>Supported codecs: PCMU, PCMA, opus, L16/16000, L16/8000, speex/8000, speex/16000, G.726-32</p>
Intelligent audio	Auto Speaker Test (verification via built-in microphone)
Event triggers	Call, virtual inputs, external input, AXIS Camera Application Platform (ACAP)

Event actions	Play audio clip, send SNMP trap, send Auto Speaker Test, status LED. File upload via HTTP, network share and email, Notification via email, HTTP, HTTPS and TCP, external output activation
---------------	---

Built-in installation aids	Test tone verification and identification
----------------------------	---

Cybersecurity

Edge security	<p>Software: Signed firmware, brute force delay protection, digest authentication, password protection, AES-XTS-Plain64 256bit SD card encryption</p> <p>Hardware: Secure boot, Axis Edge Vault with Axis device ID, signed video, secure keystore (CC EAL4+ certified hardware protection of cryptographic operations and keys)</p>
---------------	--

Network security	IEEE 802.1X (EAP-TLS) ^a , IEEE 802.1AR, HTTPS/HSTS ^a , TLS v1.2/v1.3 ^a , Network Time Security (NTS), X.509 Certificate PKI, IP address filtering
------------------	--

Documentation	<p><i>AXIS OS Hardening Guide</i></p> <p><i>AXIS Vulnerability Management Policy</i></p> <p><i>AXIS Security Development Model</i></p> <p>AXIS OS Software Bill of Material (SBOM)</p> <p>To download documents, go to axis.com/support/cybersecurity/resources</p> <p>To read more about Axis cybersecurity support, go to axis.com/cybersecurity</p>
---------------	--

General

Casing	<p>IP44 (IP40 above ceiling)</p> <p>Material: Plastic</p> <p>Top cover: Plastic</p> <p>Mesh: Surface-treated steel plate</p> <p>Mesh color: Off-white (RAL 9010 or equivalent)</p> <p>Repaintable. For repainting instructions and impact on warranty, contact your Axis partner.</p> <p>Speaker mounting method: Plastic clamp</p>
Power	Power over Ethernet (PoE), IEEE 802.3af Type 1 Class 3 (max 12.95 W)
Connectors	RJ45 10BASE-T/100BASE-TX PoE I/O: 4-pin 2.5 mm terminal block for 2x supervised configurable I/Os
Storage	Support for microSD/microSDHC/microSDXC card Max. size 64 GB For SD card recommendations see www.axis.com
Reliability	Designed for 24/7 operation.
LED indicators	Status LED, front-facing LED
Operating conditions	-30 °C to 50 °C (-22 °F to 122 °F) Humidity 10–100 % RH (condensing)
Storage conditions	-40 °C to 65 °C (-40 °F to 149 °F) Humidity 5–95 % RH (non-condensing)
Approvals	<p>EMC</p> <p>CISPR 24, CISPR 35, CISPR 32 Class A, EN 55024, EN 55035, EN 55032 Class A, EN 61000-6-1, EN 61000-6-2, EN 61000-6-3, EN 61000-6-4, FCC Part 15 Subpart B Class A, ICES-3(A)/NMB-3(A), KC KN35, KC KN32 Class A, RCM AS/NZS CISPR 32 Class A, VCCI Class A</p> <p>Safety</p> <p>CAN/CSA C22.2 No. 62368-1, CAN/CSA-C22.2 No. 60950-22, IEC/EN 62368-1, KC-Mark, UL 62368-1, UL 60950-22</p> <p>Environment</p> <p>IEC 60068-2-1, IEC 60068-2-2, IEC 60068-2-6, IEC 60068-2-14, IEC 60068-2-27, IEC 60068-2-78, IEC/EN 60529 IP44</p>
Dimensions	<p>Height: 150 mm (5.9 in), Front-mesh \varnothing 285 mm (11.2 in)</p> <p>Ceiling thickness: for mounting: 0–60 mm (0–2.4 in)</p> <p>Dimensions for fixing hole: \varnothing 261 mm \pm 2 mm (10.3 in \pm 0.08 in)</p>
Weight	3100 g
Optional accessories	<p>AXIS TC1603 Tile Bridge (for installation in soft ceiling),</p> <p>AXIS TC1602 Conduit Adapter, AXIS TC1702 Back Cover,</p> <p>AXIS Safety Wire 3M</p> <p>For more accessories, see axis.com</p>

Video management software	AXIS Companion, AXIS Camera Station, video management software from Axis' Application Development Partners available on axis.com/techsup/software	a. <i>This product includes software developed by the OpenSSL Project for use in the OpenSSL Toolkit. (www.openssl.org), and cryptographic software written by Eric Young (ey@cryptsoft.com).</i>
Languages	English, German, French, Spanish, Italian	b. <i>Audio synchronization with IPv4 only.</i>
Warranty	5-year warranty, see axis.com/warranty	