

Ultra-high speed at
an ultra-low price.

Hydra 6

Dual-Band WiFi 6
Mesh Router

MR2000



25+ devices
Capacity



AX3000
up to 3.0 Gbps



Covers homes with up to
1-2 bedrooms

Leave the lag behind.

Hydra 6

Model#
MR2000



Industry-leading technology.

The Qualcomm Immersive Home 214 Platform delivers the ultimate WiFi 6 experience. This next-gen technology evolves home and business WiFi with wire-like stability and beyond-fast performance.



Ultra-fast WiFi 6.

From next-level gaming to streaming your favorite content, WiFi 6 gives you a faster connection to everything you do.

Intelligent mesh.

Future-ready WiFi that grows with you and allows adding more routers to expand coverage for stronger connection for more devices.

Reliability.

To deliver the reliability you expect, our products pass 25 real world tests in The Linksys Life Lab, are backed by a 3-year warranty, and have 24/7 tech support.

More devices than ever before.

WiFi 6 sends and receives multiple streams of data simultaneously, providing up to 4x* more WiFi capacity to handle more gaming, and smart home devices.

Security that never sleeps.

Protect your home with Automatic Software Updates, Parental Controls, and Separate Guest Access, to help keep your network safe, secure, and up to date.

Easy setup & control.

The Linksys App makes setup simple. Control and monitor your WiFi from anywhere you have a connection.

Retail packaging.



At a glance.

- WiFi 6 means higher speeds for streaming and gaming.
- Intelligent Mesh for more coverage for more devices.
- Life Tested means reliability you can depend on.
- 160 MHz channels for more power and a stronger connection.
- Qualcomm™ Immersive Home 214 Platform chipset inside for next- gen wire-like stability and performance.
- Easy set-up & control through the Linksys App.
- 3-Year Limited Product Warranty.

Linksys Hydra 6 with Intelligent Mesh delivers the speed of WiFi 6. From next-level gaming to streaming your favorite content, get the fastest connection to everything you do.

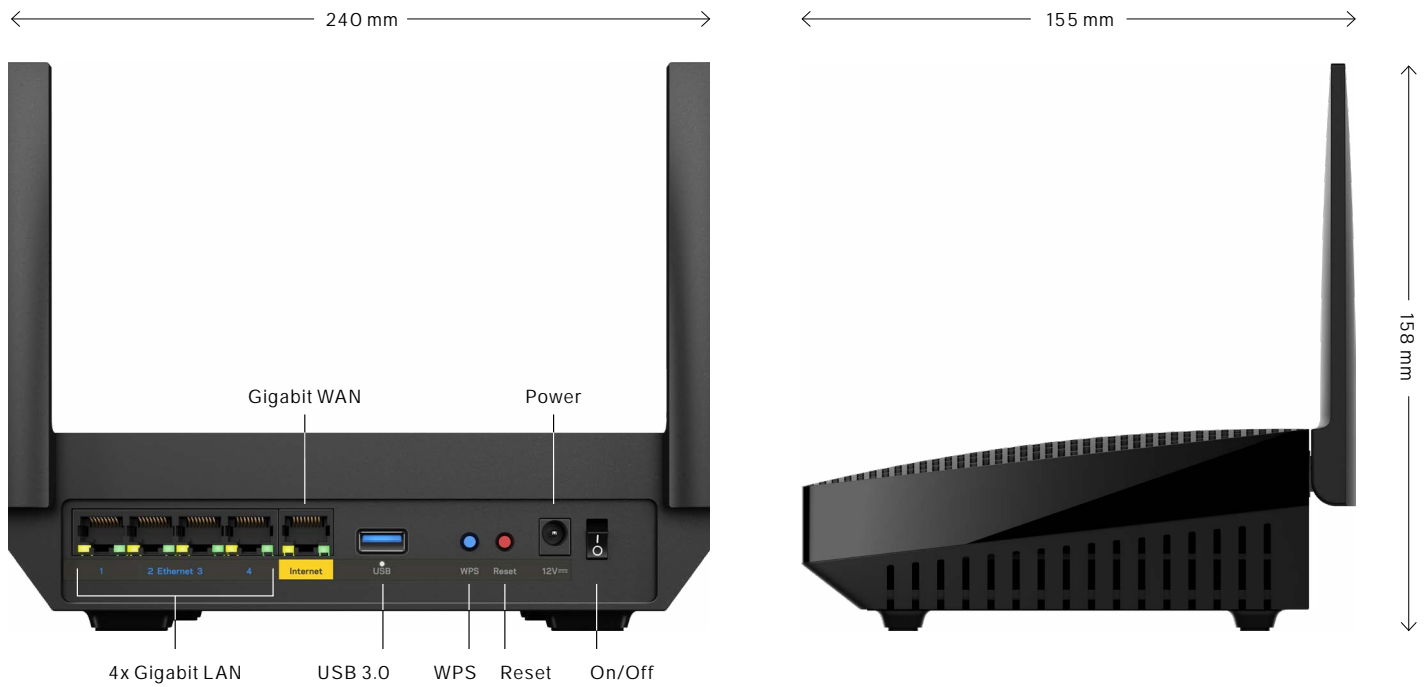
Access to 160 MHz unleashes the true power of WiFi 6 technology—these are the least congested channels available on the 5GHz band and offer incredibly fast connectivity.

Dynamic Frequency Selection (DFS) provides access to more channels, reducing interference from neighboring networks. OFDMA increases efficiency in high-density scenarios, delivering high-speed WiFi to multiple devices simultaneously.

Intelligent Mesh™ technology offers whole home mesh WiFi coverage that's easily expandable by adding additional Routers or nodes.

With easy setup, advanced security and parental controls, the Hydra 6 is an essential upgrade to any home.

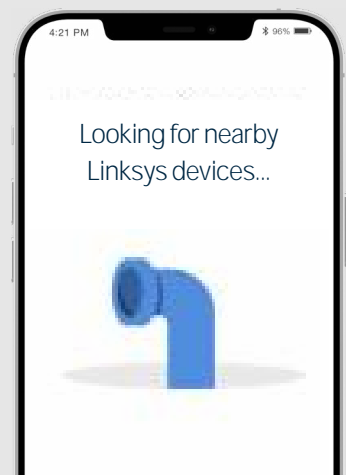
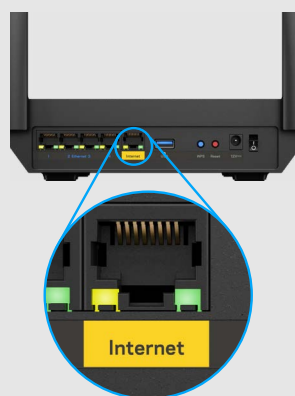
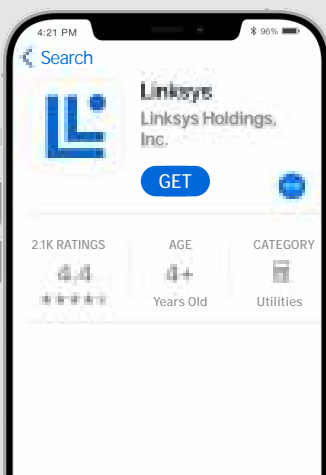
Product details.



Easy App-led setup.

Setting up the Hydra WiFi 6 Mesh router (MR2000) is easy. Download the Linksys app on any iOS or Android smartphone. Upon launch the app automatically identifies the device to be setup and provides an animated setup guide that will have you online in minutes. With the Linksys App, you can always monitor and manage your home WiFi from anywhere, using a smartphone or tablet.

1. Download and install the free Linksys app.
2. Connect the MR2000 to your modem (-router), plug in & switch on.
3. Open the app and follow the on-screen instructions.





Intelligent Mesh™

Model# MR2000

Hydra 6 Dual-Band WiFi 6 Mesh Router



As your home and family expands, the **Hydra 6** Linksys Intelligent mesh router allows you to easily expand by adding additional routers or nodes to your network, giving you flawless and seamless WiFi everywhere.

We recommend pairing Linksys **Hydra 6** with Linksys **Atlas 6** Intelligent mesh dual-band nodes.



Each Hydra 6 router or Atlas 6 node adds 1 to 2 rooms of coverage** or 1 floor** at speeds of up to 3.0 Gbps*.

One Hydra 6 router or Atlas 6 node covers homes with up to 1 to 2 bedrooms**.



Two Hydra 6 routers or Atlas 6 nodes cover homes with up to 2-3 bedrooms**.



Three Hydra 6 routers or Atlas 6 nodes cover homes with up to 3-4+ bedrooms**.



Life
Tested
by
Linksys



Easily control your home WiFi.

Linksys App at a glance.

- View which devices are connected, and easily limit internet usage with Parental Controls.
- Assign bandwidth hierarchy with Device Prioritisation.
- Keep your WiFi secure with Automatic Firmware updates.
- Give guests access and share their password via text message.

Control your WiFi in real time, wherever you are.

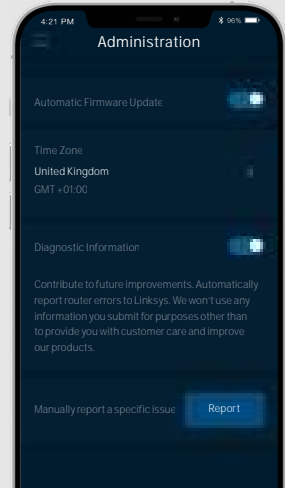
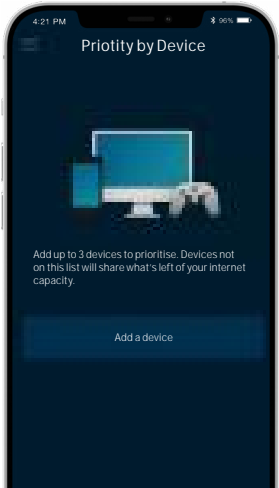
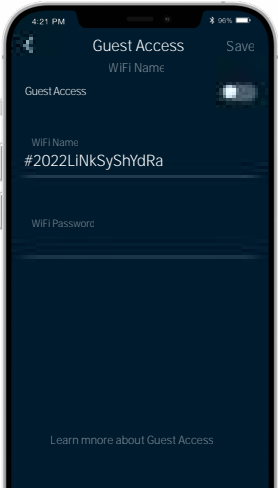
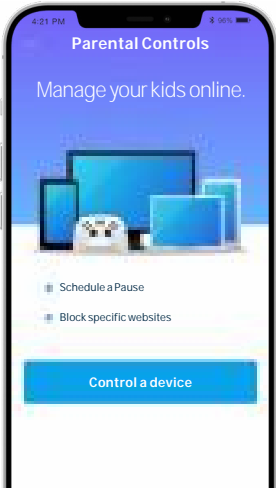
The Linksys app is the command center for your WiFi. Use the Linksys app anywhere you have an internet connection to check connected devices, set up guest access, or keep your kids off the internet when they should be doing homework.

Parental control.
Create device schedules, block certain websites or pause WiFi for homework.

Guest access.
Easily share a guest network with visitors. Your main WiFi stays separated by a firewall.

Device prioritisation.
Prioritise streaming devices while your kids surf or play games.

Auto firmware update.
Keep your WiFi safe and secure with Automatic Firmware updates.



Specifications.

Dimensions.

Package Includes

- Linksys Hydra 6
- Ethernet cable, power adapter
- Quick start guide, regulatory and warranty documentation.

LED

1 multi-coloured light for power and system status.

Buttons

Power switch, WPS, reset.

WiFi Specifications

WiFi AX3000* with 4-stream WiFi,
Radio 1 – 2.4 GHz Band
802.11ax - 574 Mbps*
Radio 2 – 5 GHz Band
802.11ax - 2,402 Mbps*

Simultaneous Dual-Band
IEEE 802.11 b/g/n – 2.4 Ghz,
IEEE 802.11 a/b/n/ac/ax – 5 Ghz
OFDMA Technology.
Seamless roaming technology.

Required for set-up

- 1 Internet connection with a modem or modem-router.
- 2 Mobile devices with Android 6 or iOS 14.1 and higher, with data connection.

Bluetooth®

5.1/LE for secure and easy App-based Setup.

Processor and Memory

Qualcomm™ Immersive Home 214 Platform, 1.0 GHz Dual-Core.
256 MB Flash, 512 MB SDRAM.

Security

WPA2-Personal, WPA3-Personal, WPA3/WPA2-Personal Mixed, Enhanced Open.

SPI Firewall and DoS Protection, automatic security updates.
Security key up to 128-bit Encryption.

Parental controls, separate guest network.

Wired Connectivity

5 Gigabit Ethernet ports
(1x WAN, 4x LAN).
802.3ab, 802.3u.
1 USB 3.0 port.

Radio Operating Frequencies

2.4 GHz 2,412-2,472 MHz
5 GHz 5,180-5,240 MHz
 5,250-5,320 MHz
 5,500-5,700 MHz
Bluetooth 2,402-2,480 MHz

Antennas

WiFi: 2 dipole external dual-band, adjustable, 2.4 GHz / 5 GHz.
Bluetooth: 1 internal PIFA.

Antenna Gain

WiFi

2,412-2,472 MHz 4.09 dBi
5,180-5,240 MHz 3.65 dBi
5,250-5,320 MHz 3.57 dBi
5,500-5,700 MHz 3.81 dBi

Bluetooth 3.95 dBi

Output Power (EIRP) WiFi

2,412-2,472 MHz 19.68 dBm
Beamforming 19.33 dBm
5,180-5,240 MHz 22.79 dBm
Beamforming 22.66 dBm
5,250-5,320 MHz 22.80 dBm
Beamforming 22.70 dBm
5,500-5,700 MHz 29.66 dBm
Beamforming 29.45 dBm

Power adapter

Input 100-240 V, 50-60 Hz
Output 12 V, 1.5 A

Temperature

– Operating 0 to 40° C
– Storage -20 to 60° C

Humidity (non-condensing)

– Operating 10 to 80% RH
– Storage 5 to 90% RH

Product:

Weight 0.66 kg
Width 21.5 cm
Height 15.8 cm
Depth 15.5 cm

Packaged Unit

Weight 1.16 kg
Width 23.8 cm
Height 22.3 cm
Depth 8.92 cm

Case Pack

Quantity (*PL) 4 per pack
Weight (*PL) 5.3 kg
Width (*PL) 37.9 cm
Height (*PL) 24.4 cm
Depth (*PL) 27.4 cm

Manufacturer Linksys Holdings, Inc
Brand Linksys
Model Number MR2000
Description Hydra 6 Dual-Band WiFi 6 Mesh Router

Linksys UK Ltd.
Regent Park, Booth Drive,
Park Farm South, Wellingborough,
Northants, NN8 6GR, United Kingdom

Linksys UK Limited
Amsterdam Branch, Herikerbergweg
106, 1101 CM, Amsterdam Z.O.
The Netherlands

Part Number	Tarif code	UPC	EAN	Plug type
MR2000-ME	8517620000	745883832866	4260184673414	British (BS1363)
MR2000-KE	8517620000	745883832859	4260184673407	Euro (CEE 7/16) + British (BS1363)

© 2022 Linksys Holdings, Inc. and/or its affiliates. All rights reserved.
Made in Vietnam.

* Specifications are subject to change without notice. Maximum performance derived from IEEE Standard 802.11 specifications. Actual performance may vary, including lower wireless network capacity, data throughput rate, range, and coverage. Range specifications are based on performance test results under normal use case conditions. Actual data throughput and range depend upon many factors, conditions and variables, including building materials and construction, volume of network traffic, mix of wireless products used, interference, wireless obstructions and other adverse conditions. Actual data throughput will be lower than specified and may depend on mix of wireless products used, your wireless device's WiFi standard, and external factors. Wireless coverage claims are used only as reference and are not guaranteed, as each wireless network is unique.

An active, customer-purchased internet service provider broadband account is required for connection of this router and other connected computers and devices to the Internet. Number of connected devices is based on lab test results. Some devices may require additional wireless adapters that match this product's maximum WiFi standard or an Ethernet cable to connect to this router.

© 2022 Linksys Holdings, Inc. and/or its affiliates. All rights reserved. Linksys, Velop, Atlas, Hydra, Intelligent Mesh and many product names and logos are trademarks of Linksys Holdings Inc. and/or its affiliates. Third-party trademarks mentioned are the property of their respective owners. App Store is a service mark of Apple Inc. Google Play is a trademark of Google Inc. Bluetooth® is a registered trademark owned by Bluetooth SIG Inc. and its use by Linksys is under license. WiFi and WiFi Protected Setup are either trademarks or registered trademarks of the WiFi Alliance. The WiFi CERTIFIED Logo is a certification mark of the WiFi Alliance.
*As compared from 802.11ac to 802.11ax.

User Documentation is also available at: www.linksys.com/support

