

MP Series IP Phones

for Microsoft Teams & Skype for Business



Android 9.0



HD Audio



Teams Button



Hybrid Mode



Efficient Provisioning
and Management



The Yealink MP series IP phones include a new set of models with native Microsoft Teams experience, high-quality audio delivery, Android 9.0 performance as well as streamlined, efficient deployment and management. To meet diverse needs of modern workspaces, the MP series includes models from basic to premium level, covering scenarios of common areas, front desks, co-working spaces, personal offices, etc.

Powerful Chipsets, Android 9.0-based Performance

Yealink MP Series comes with the new powerful chipsets, which bring stability and sustainability to the device for optimizing the performance and life cycle. Android 9.0 OS not only boosts the phone with fast response and fluent interactive experience, but also enhances the firmware and data encryption of higher security level.



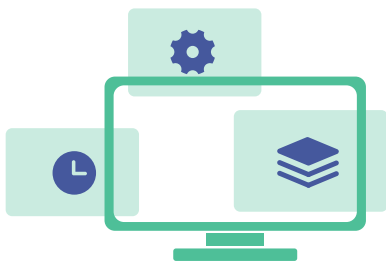
Stay Productive and Collaborative with Advanced Teams Experience

Embedded with high-resolution capacitive touch screen and dedicated Teams button, the MP Series brings rich visual presentation with Teams-tailored user interface for consistent Teams calling and meeting experience.



Professional and Sophisticated Audio Technology, Making Every Conversation Clear and Focus

Combining professional hardware and software technology, the MP Series delivers crystal clear voice communications thanks to Yealink Optima HD voice, Noise Proof Technology, as well as the full-duplex hands-free speakerphone with AEC and the HAC handset.



Simplified and Streamlined Device Deployment and Management

Yealink MP Series offers enhanced deployment flexibility with multiple choices of deployment tools from Microsoft, Yealink and Unify square as well as auto-provision mechanism, making it simple and efficient to deploy, administer, upgrade and maintain the devices.

Advanced Features Showcase

Innovative Wireless Bluetooth Handset

Yealink MP58 innovative Bluetooth handset allows the users to stay connected and be able to answer or keep callings even when walking away from the desk. With the wireless design, the handset significantly improves the mobility and flexibility performance in desktop communication.



Color Expansion Module

Featuring a 4.3-inch color screen, Yealink EXP50 is designed to work as an accessory to Teams phones with legible LED indicators and advanced call handling capabilities, which become an ideal solution for receptionists, administrative assistants and contact center workers to monitor contacts and manage a large volume of calls with ease.



All-in-One UC Workstation

With USB and Bluetooth connectivity, hands-free speakerphone, 4-inch multi-point touchscreen and USB hub feature, the MP50 is able to integrate multiple devices into a single desktop phone for unified call controlling as well as various USB hub expansions.



For Diverse Scenarios and Requirements



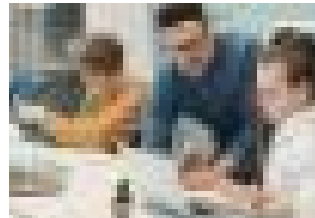
Common area/Hot-desking

- MP50 Teams USB Phone
- MP54 Basic Teams Phone



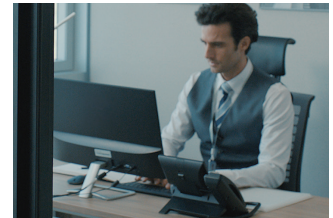
Reception/Call center

- MP56 Mid-level Teams Phone with Expansion Module
- MP54 Basic Teams Phone



Co-working space/ Daily desktop

- MP50 Teams USB Phone
- MP54/MP56 Teams Phone



Executive/Private office

- MP58/MP58-WH Teams Smart Business Phone

Specification

Features	Model	MP58/MP58-WH	MP56	MP54	MP50
Pictures					
General features					
Operating System		Android 9.0	Android 9.0	Android 9.0	Linux
Display		7"1024 x 600-pixel capacitive touch screen	7"800 x 480-pixel capacitive touch screen	4"480 x 800-pixel capacitive touch screen	4"480 x 800-pixel capacitive touch screen
Adjustable Screen		✓	x	x	x
Backlight		✓	✓	✓	✓
Feature keys		7 (hold, transfer, redial, headset, mute, Teams, speaker phone)	7 (hold, transfer, redial, headset, mute, Teams, speaker phone)	4 (Teams, headset, mute, speaker phone)	4 (Teams, headset, mute, speaker phone)
Volume control keys		✓	✓	✓	✓
Message Waiting Indicator (MWI)		✓	✓	✓	✓
Multiple languages		✓	✓	✓	✓
Dedicated Teams Button		✓	✓	✓	✓
Wall mount		✓	✓	✓	✓
Audio features					
HD voice		HD handset, HD speaker	HD handset, HD speaker	HD handset, HD speaker	HD handset, HD speaker
AEC (Acoustic echo cancellation)		Full-duplex hands-free speakerphone with AEC	Full-duplex hands-free speakerphone with AEC	Full-duplex hands-free speakerphone with AEC	Full-duplex hands-free speakerphone with AEC
VAD (Voice activity detection)		✓	✓	✓	x
CNG (Comfort noise generator)		✓	✓	✓	x
AJB (Adaptive jitter buffer)		✓	✓	✓	✓
PLC (Packet loss concealment)		✓	✓	✓	x
AGC (Automatic gain control)/NS (Noise Suppression)		✓	✓	✓	✓
Advanced features					
Teams/SIP Hybrid Mode		✓	✓	✓	x
Expansion Module support		EXP50	EXP50	x	x
Bluetooth Handset support		✓ (MP58-WH)	x	x	x
Connectivity					
Built-in Bluetooth		4.2+ EDR	4.2+ EDR	x (Supported via Dongle BT41)	4.2+ EDR
Built-in Wi-Fi		2.4G/5G Wi-Fi (802.11a/b/g/n)	2.4G/5G Wi-Fi (802.11a/b/g/n)	x (Supported via Dongle WF50)	x
USB A Port		2	1	1	3
Ethernet Port		Dual-port Gigabit Ethernet	Dual-port Gigabit Ethernet	Dual-port Gigabit Ethernet	x
Power over Ethernet (PoE)		(IEEE 802.3af), class 3	(IEEE 802.3af), class 3	(IEEE 802.3af), class 3	x
RJ9 handset port		✓	✓	✓	✓
RJ9 headset port		✓	✓	✓	✓
Management					
Auto Provision by TFTP/FTP/HTTP/HTTPS/DHCP		✓	✓	✓	N/A
Yealink Redirection and Provisioning Service (RPS)		✓	✓	✓	N/A

