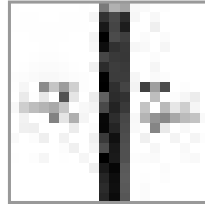
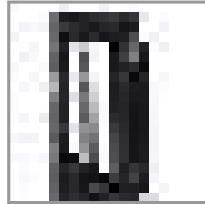
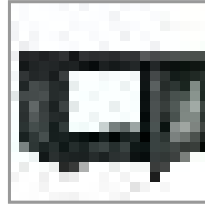
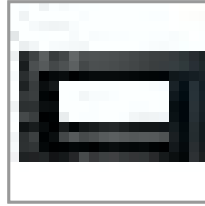


SmartRack 6U Low-Profile Switch-Depth Wall-Mount Mini Rack Enclosure with Clear Acrylic Window

MODEL NUMBER: **SRW6UG**



Wall-mount cabinet secures and organizes 6U of 19-inch rack equipment up to 16.5 inches deep in locations with limited floor space. Clear acrylic window allows you to monitor equipment without unlocking door.

Description

The SRW6UG SmartRack 6U Low-Profile Switch-Depth Wall-Mount Rack Enclosure Cabinet is designed to house EIA-standard 19-inch rack equipment in network wiring closets, retail locations, classrooms, back offices and other areas with limited floor space where you need equipment to be secure, organized and out of the way. Constructed from heavy-duty steel with a durable black powder-coated finish, the cabinet has a maximum load capacity of 200 lbs (90.7 kgs).

The front door features a shatter-resistant clear acrylic window that lets you monitor equipment readouts without unlocking the enclosure. Not only does the window help prevent equipment tampering and reduce acoustic noise, but it also adds visual flair to your IT installation.

The front door and side panels lock securely to help prevent damage, tampering or theft. The top, bottom and removable side panels are vented, which allows air to flow freely and keep equipment cool. The reversible front door can open left or right by rotating the cabinet 180° before mounting. Convenient top and bottom ports allow easy cable routing.

The SRW6UG comes fully assembled and ready to mount to the wall, or use Tripp Lite's optional SRCASTER rolling caster kit to make it a mobile rack. Square and 12-24 threaded mounting holes and numbered rack spaces make equipment installation easy. The vertical mounting rails adjust in 7/8-inch increments to accommodate equipment up to 16.5 inches deep, such as network switches and patch panels.

Features

Saves Valuable Workspace

- Perfect for network wiring closets, retail locations, classrooms, back offices and other areas with limited floor space where you need equipment to be secure, organized and out of the way
- Houses EIA-standard 19 in. rack equipment in 6U of space
- Maximum load capacity of 200 lbs (90.7 kgs)

Shatter-Resistant Clear Acrylic Front Window

- Lets you monitor equipment without unlocking the enclosure
- Prevents equipment tampering

Highlights

- Maximum load capacity of 200 lbs (90.7 kgs)
- Front door includes shatter-resistant clear acrylic window
- Locking steel cabinet vented at sides, top and bottom
- Secures 6U of 19 in. rack equipment up to 16.5 in. deep
- Mounts to wall or rolls on floor (with optional SRCASTER)

Package Includes

- SRW6UG SmartRack 6U Low-Profile Switch-Depth Wall-Mount Rack Enclosure Cabinet
- (12) M6 screws
- (12) M6 cage nuts
- (12) M6 cup washers
- (12) 12-24 screws
- Removable mounting plate
- (3) Mounting plate screws
- (2) Keys
- Owner's manual



- Reduces acoustic noise
- Provides extra visual flair

Keeps Important Equipment Secure

- Side panels and front door lock securely to help prevent damage, tampering or theft
- Vented panels allow generous airflow that keeps equipment cool
- Rotate cabinet 180° before mounting to open reversible front door left or right
- Convenient ports with removable covers allow cable routing through top and bottom

Easy Enclosure and Equipment Installation

- Ships fully assembled for quick installation
- Mounts to wall or rolls on floor with Tripp Lite's optional SRCASTER caster kit
- Wall-mounting holes spaced 16 in. apart for standard wall stud placement
- Vertical mounting rails adjust in 7/8 in. increments to accommodate equipment up to 16.5 in. deep, such as network switches and patch panels
- Rails support square-hole or 12-24 threaded-hole mounting
- Rack spaces numbered for easy reference

Meets Payment Card Industry Standards

- Provides physical equipment and media security required for PCI DSS (Payment Card Industry Data Security Standard) compliance

Specifications

OVERVIEW	
UPC Code	037332187277
Device Compatibility	Patch Panel; Network Switch; UPS
Rack Type	Small Enclosure
PHYSICAL	
Color	Black
Rack Height	6U
Rack Depth	Shallow
Maximum Device Depth (cm)	41.91
Maximum Device Depth (in.)	16.5
Maximum Device Depth (mm)	419
Minimum Device Depth (cm)	7.62
Minimum Device Depth (in.)	3
Minimum Device Depth (mm)	76
Cable Access Hole Measurement (inches)	9.812 x 2.35 (l x w)

Shipping Dimensions (hwd / in.)	17.30 x 25.80 x 19.90
Shipping Dimensions (hwd / cm)	43.94 x 65.53 x 50.55
Shipping Weight (lbs.)	35.00
Shipping Weight (kg)	15.88
Unit Dimensions (hwd / in.)	14.500 x 23.500 x 17.500
Unit Dimensions (hwd / cm)	36.83 x 59.7 x 44.45
Unit Weight (lbs.)	29
Unit Weight (kg)	13.15
Weight Capacity - Stationary (kg)	91
Weight Capacity - Stationary (lbs.)	200
Number of Vertical Mounting Rails	2
FEATURES & SPECIFICATIONS	
Grounding Details	Front and Back door frames
Pre-Installed Casters	No
STANDARDS & COMPLIANCE	
Product Certifications	UL 60950-1
Product Compliance	RoHS; EIA/ECA-310-E
WARRANTY & SUPPORT	
Product Warranty Period (Worldwide)	5-year limited warranty