



IN-WALL STORAGE

WHERE & WHEN YOU WANT IT

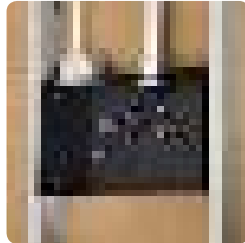
Chief engineers talked to customers like you about in-wall boxes and your biggest headaches on the construction site. Then they designed all new in-wall boxes to solve those headaches with multiple depth and ordering options.



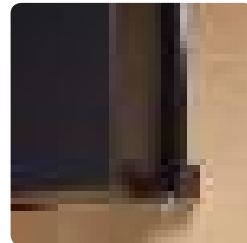
Break Away Edges



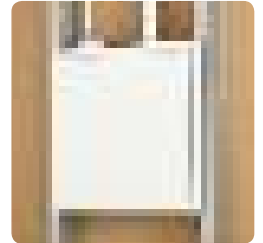
Easier Knockouts



Zip tie Anchor Points



Drywall Mountable



Paintable Flanges and Covers

IN-WALL BOX FEATURES

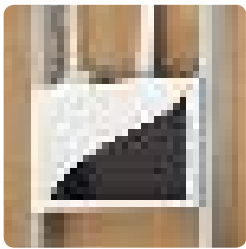
- Break away edges to change box depth for 3.5" or 2.5" stud bays (89 or 64 mm)
- Separate and/or pre-configured ordering options for box, flange and cover to coincide with the timing of installation in the field, and at no additional MSRP or list pricing cost
- Ample space to hold big components such as commonly used video scalers
- Packaging that also serves as a wall template and temporary construction cover
- Easier knockouts to quickly customize the box to specific needs on site
- Integrated universal zip tie anchor points
- Cover includes breakaway knockouts for cable routing and ventilation as well as tamper proof security
- Black or white flanges and covers, paintable to blend with any environment
- In-wall boxes are stud mountable and can be mounted to drywall with the addition of optional flange
- Compatible with any Chief dual stud wall mount



ORDERING OPTIONS

You can order boxes, flanges and covers in various pre-configured combinations or separately at no additional MSRP or list pricing cost. You asked us to help provide you with the pieces you need, when you need them. You got it. See your ordering options below.

PAC525 - 9 x 14.25 x 3.9" (229 x 362 x 99 mm)



Model	In-Wall Box	Black Flange	Black Cover	White Flange	White Cover
PAC525	x				
PAC525F	x	x			
PAC525FW	x			x	
PAC525FC	x	x	x		
PAC525FCW	x			x	x
PAC525F-KIT		x			
PAC525FW-KIT				x	
PAC525CVR-KIT			x		
PAC525CVRW-KIT					x

PAC526 - 14.25 x 14.25 x 3.9" (362 x 362 x 99 mm)



Model	In-Wall Box	Black Flange	Black Cover	White Flange	White Cover
PAC526	x				
PAC526F	x	x			
PAC526FW	x			x	
PAC526FC	x	x	x		
PAC526FCW	x			x	x
PAC526F-KIT		x			
PAC526FW-KIT				x	
PAC526CVR-KIT			x		
PAC526CVRW-KIT					x



A BRAND OF MILESTONE AV TECHNOLOGIES ■ www.chiefmfg.com

USA P 800.582.6480 / +1.952.225.6000 ■ F 877.894.6918 / +1.952.894.6918 ■ chief@chiefmfg.com
 Canada P 877.345.4329 ■ F 888.377.5314 ■ canadainfo@milestone.com
 EMEA P +31 495 580 840 ■ F +31 495 580 845 ■ emea.sales@milestone.com
 Asia Pacific P +852 2145 4099 ■ F +852 2145 4477 ■ asia.chief@milestone.com

In British Columbia, Milestone AV Technologies ULC carries on business as MAVT Milestone AV Technologies ULC.

©2014 Milestone AV Technologies. 140069A 4/14 Chief is a registered trademark of Milestone AV Technologies. All other brand names or marks are used for identification purposes and are trademarks of their respective owners. All patents are protected under existing designations. Other patents pending.