

Installation Instructions for StarTech.com Privacy Filters

Requirements

For the latest manuals, product information, technical specifications, and declarations of conformance, please visit: www.startech.com/support

Install the Privacy Filter

Notes: For installations where less frequent removal is desired or if the display is bezel-less, it is recommended to use the Adhesive Strips.

For installations that require frequent removal of the Privacy Filter or if the display features raised bezels, it is recommended to use the Mounting Tabs.

Remove all Protective Films from the Privacy Filter prior to installation.

If the Privacy Screen is reversible, choose the side that best fits the application.

Not all installation methods are available for all Privacy Filters.

Method 1: Adhesive Strips

1. Clean the **Screen** using the **Wiping Cloth**.
2. Select the side of the **Privacy Filter** intended to **Face Outward**. Place the **Privacy Filter** on a clean and flat surface with the selected side **Facing Down**.
3. Remove all **Adhesive Strips** from the **Transparent Lining**. (Figure 1)
4. Carefully align the **Adhesive Strips** along the **Top, Bottom, Left, and Right** edges of the **Privacy Filter**. Apply **Firm Pressure** to attach them to the **Privacy Filter**. (Figure 2)

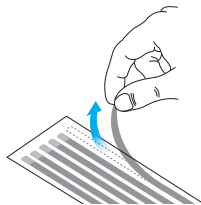


Figure 1

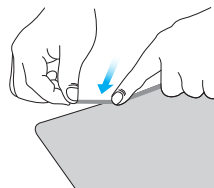


Figure 2

5. Carefully remove the **Protective Backing** from the **Adhesive Strips**. (Figure 3)
6. Attach the **Privacy Filter** to the **Screen**, starting from the **Bottom** and working towards the **Top**. The **Adhesive Side** should face toward the **Screen**. (Figure 4)

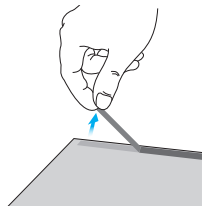


Figure 3

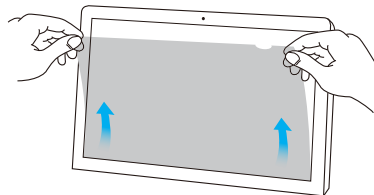


Figure 4

7. Apply **Gentle Pressure** on the **Locations** where the **Adhesive Strips** were installed.
8. Clean any fingerprints on the **Privacy Filter** using the **Wiping Cloth**.

Method 2: Mounting Tabs

1. Clean the **Screen** and **Bezels** using the **Wiping Cloth**.
2. Separate the **Mounting Tabs**. (Figure 5)
3. Remove the **Protective Backing** from the **Mounting Tabs**. (Figure 6)

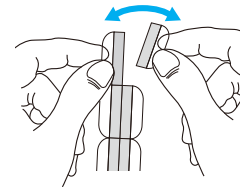


Figure 5

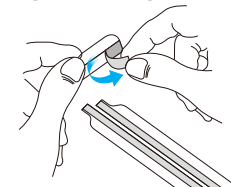


Figure 6

4. Install **One Short and One Long Mounting Tab** on the **Left Bezel**.
5. Repeat **Step 4** for the **Right Bezel**.
6. Install **One Short Mounting Tab** on the **Bottom Bezel**. (Figure 7)

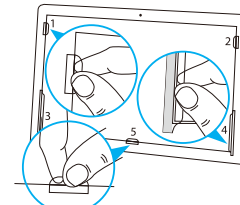


Figure 7

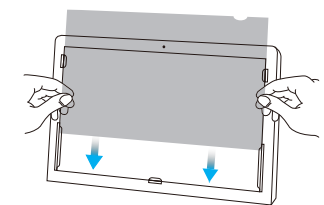


Figure 8

Note: Depending on the display size, additional Mounting Tabs may need to be installed on the side or bottom bezels.

7. Slide the **Privacy Filter** between the **Mounting Tabs** and the **Screen**. (Figure 8)
8. Clean any fingerprints on the **Privacy Filter** using the **Wiping Cloth**.

Method 3: Flip-Up and Flip-Over

1. Clean the **Screen** and **Bezels** using the **Wiping Cloth**.
2. Carefully remove the **Protective Backing** from the **Short-Side** of the **Adhesive Flip-Up Tabs** or **Flip-Over Tabs**. (Figure 9)
3. Carefully align and evenly space the **Adhesive Flip-Up Tabs** or **Flip-Over Tabs** around the corners of the **Top Edge** of the **Privacy Filter**. Apply **Firm Pressure** to

align them to the **Screen Side** of the **Privacy Filter**. (Figure 10)

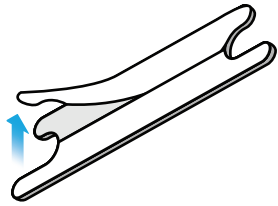


Figure 9

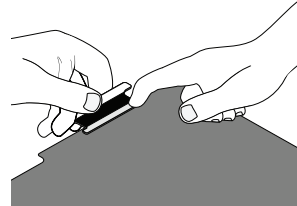


Figure 10

4. Carefully remove the **Protective Backing** from the **Long-Side** of the **Adhesive Flip-Up** or **Flip-Over Tabs**. (Figure 11)

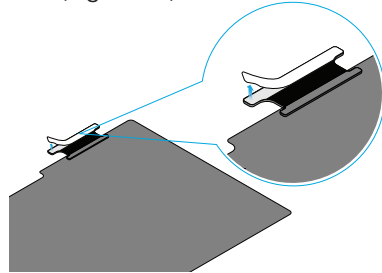


Figure 11

5.a **Flip-Up Installation:** Center the **Privacy Filter** against the **Screen**, ensuring the active area of the **Screen** is covered and the **Adhesive Flip-Up Tabs** are aligned and straight along the **Top Bezel**. Apply **Firm Pressure** to align them to the **Top Bezel**. (Figure 12)

5.b **Flip-Over Installation:** Center the **Privacy Filter** against the **Display**, ensuring the entire **Display** is covered. Fold the **Adhesive Flip-Over Tabs** over the **Top Edge** ensuring they are straight. Apply **Firm Pressure** to align them to the **Lid**. (Figure 13)

Note: Ensure the **Adhesive Flip-Over Tabs** are perfectly aligned with each other so the **Privacy Filter** is not skewed and can seamlessly rotate when flipped.

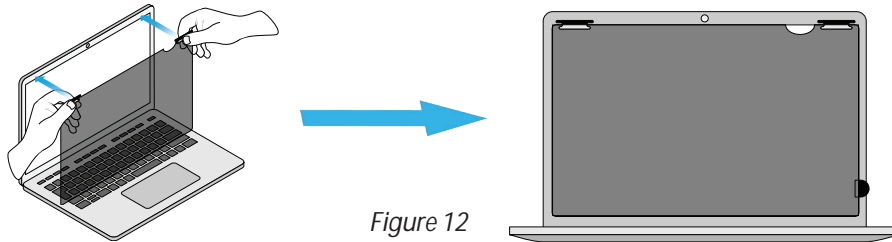


Figure 12

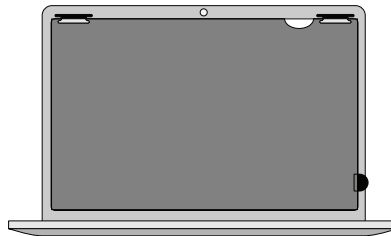


Figure 13

6. (Optional) Carefully remove the **Protective Backing** from the **Adhesive Lifting-Tab**. Carefully align the **Adhesive Lifting-Tab** along the **Bottom Left** or **Right Edge** of the **Privacy Filter**. Apply **Gentle Pressure** to align it to the **Privacy Filter**. (Figure 14)

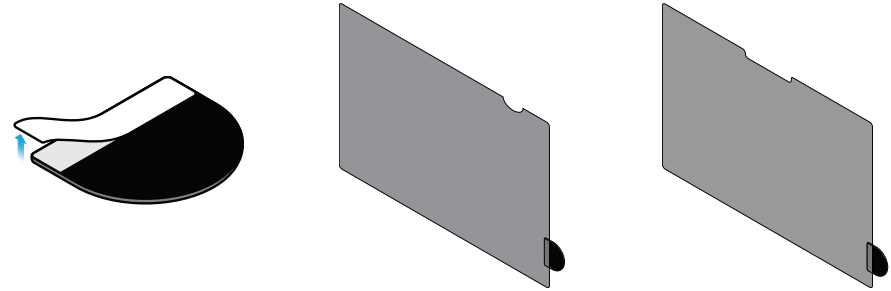


Figure 14

7. (Optional) Use the **Lifting Tab** to **Lift-Up** or **Flip** the **Privacy Filter** over the **Lid**, depending on the installed **Adhesive Tabs**. (Figure 15)

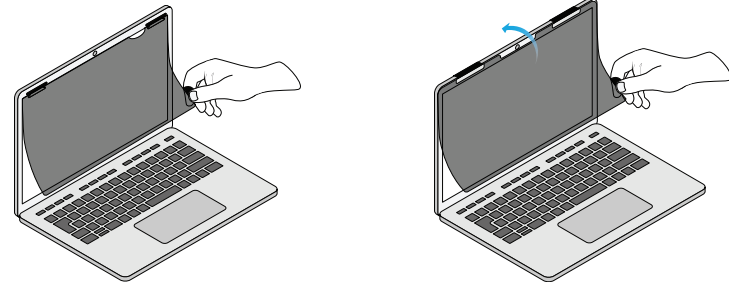
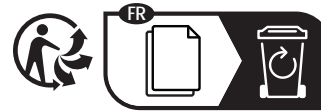


Figure 15



Regulatory Compliance

Use of Trademarks, Registered Trademarks, and other Protected Names and Symbols

This manual may make reference to trademarks, registered trademarks, and other protected names and/or symbols of third-party companies not related in any way to StarTech.com. Where they occur these references are for illustrative purposes only and do not represent an endorsement of a product or service by StarTech.com, or an endorsement of the product(s) to which this manual applies by the third-party company in question. StarTech.com hereby acknowledges that all trademarks, registered trademarks, service marks, and other protected names and/or symbols contained in this manual and related documents are the property of their respective holders.

Warranty Information

This product is backed by a two-year warranty.

For further information on product warranty terms and conditions, please refer to www.startech.com/warranty.

Limitation of Liability

In no event shall the liability of StarTech.com Ltd. and StarTech.com USA LLP (or their officers, directors, employees or agents) for any damages (whether direct or indirect, special, punitive, incidental, consequential, or otherwise), loss of profits, loss of

StarTech.com Ltd.
45 Artisans Crescent
London, Ontario
N5V 5E9
Canada

StarTech.com LLP
4490 South Hamilton
Road
Groveport, Ohio
43125
U.S.A.

StarTech.com Ltd.
Unit B, Pinnacle 15
Gowerton Road
Brackmills,
Northampton
NN4 7BW
United Kingdom

StarTech.com Ltd.
Siriusdreef 17-27
2132 WT Hoofddorp
The Netherlands

FR: startech.com/fr
DE: startech.com/de
ES: startech.com/es
NL: startech.com/nl
IT: startech.com/it
JP: startech.com/jp