

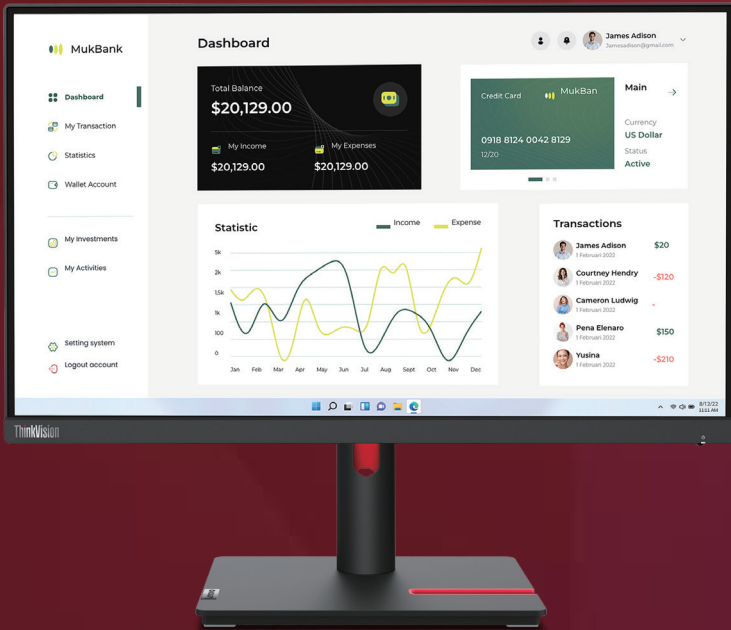
ThinkVision T23i-30 Monitor

**Smarter
technology
for all**

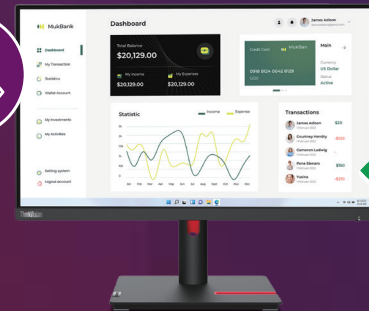
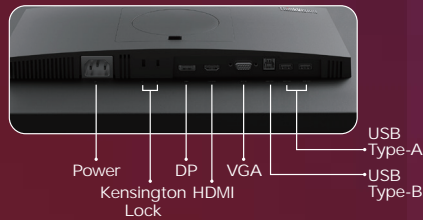
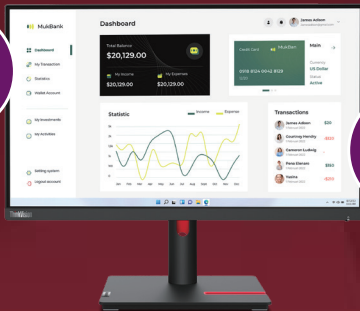
**Fully equipped to make
a triumph.**

Mighty features & comfort that help you achieve more with ease.

The ThinkVision T23i-30 Monitor brings incredible display performance, comfort, convenience, and functionality to your workstation. With a large 23-inch FHD screen this monitor packs an incredible view without taking up excessive desk space. Its In-Plane Switching technology with 72% NTSC color lets you view content with accurate colors and grayscale performance, even from off-center angles, easing multi-person viewing during collaborations. An aesthetic, minimal 3-sided NearEdgeless bezel design delivers functionality too, providing you with a nearly seamless multi-screen experience that helps you view more and do more. Adjust the ThinkVision T23i-30 Monitor to your preference for all-day viewing comfort with the ergonomic stand that not only lets you lift, tilt, and swivel but also pivots the monitor between landscape and portrait views. The Natural Low Blue Light technology keeps your eyes safe, ensuring that eye strain doesn't ever stop you in your tracks, despite long working hours. The extensive connectivity hub unleashes more possibilities by letting you connect to a limitless range of accessories and devices with its VGA, DP 1.2, HDMI 1.4, and Audio Out ports. The monitor is designed to keep you and the environment in mind. That is why it's made to meet the latest TCO 9.0 regulations, and comes encased in recyclable packaging. The ThinkVision T23i-30 Monitor is an innovation devised to assist you in making a wave of success without taking too much space.



Features of ThinkVision T23i-30 Monitor



A display of excellence

The ThinkVision T23i-30 Monitor's 23-inch FHD In-Plane Switching display lets you view content in exquisite detail and accurate colors, even from wide viewing angles. Its 72% NTSC color gamut boasts dynamic rich colors. The full-function ergonomic stand lets you lift, tilt, swivel, and pivot the monitor to a perfect angle that's comfortable to view content from all day. While most users would find its lowest height of 150 mm sufficient, you can also take your viewing experience to new heights with a lift range up to 155 mm. And if you prefer optimizing your desk space even further, the ThinkVision T23i-30 Monitor also comes with VESA mounting compatibility.

Unleash new possibilities

The ThinkVision T23i-30 Monitor redefines power with its elaborate connectivity hub. Connect to a limitless range of devices and accessories with the VGA, DP 1.2, and HDMI 1.4 ports. Extend your view vertically or horizontally and multitask efficiently by attaching additional screens with multi-monitor support. Snap-on your sound system for loud and clear conferences by connecting it directly to the monitor's Audio Out port. Get things done faster with the four speedy USB 3.2 Gen 1* ports that let you transfer several large files in no time.

Made with care, to care

Personalize the ThinkVision T23i-30 Monitor by customizing the settings to your preference with the easy-to-use one-button joystick, conveniently placed behind the monitor. The monitor's Natural Low Blue Light technology reduces harmful blue light emission to care for your eyes ensuring superior color accuracy while TÜV Rheinland Eye Comfort certification ensures you experience no visual strain. Designed to care for the planet too, the ThinkVision T23i-30 is made following the latest TCO 9.0 regulations. But that's not all. In an effort to conserve the environment along every step of our process, the monitor is packed with recyclable and recycled paper.

* Depending on many factors such as the processing capability of peripheral devices, file attributes, and other factors related to system configuration and operating environments, the actual transfer rate using the various USB connectors on this device will vary and is typically slower than the data rates as defined by the respective USB specifications: 5 Gbit/s for USB 3.2 Gen 1; 10 Gbit/s for USB 3.2 Gen 2 & 20 Gbit/s for USB 3.2 Gen2x2.

ThinkVision T23i-30 Monitor

Display

Panel Size
23-inch

Screen Dimensions
517.2 mm x 290.4 mm

Panel Type
3-side NearEdgeless In-Plane Switching

Active Area
509.1 mm x 286.4 mm

Backlight
WLED

Aspect Ratio
16:9

Resolution
1920 x 1080

Pixel Pitch
0.265 mm x 0.265 mm

Dot/Pixel Per Inch (DPI/PPI)
96

Viewing Angle (H x V @ CR 10:1)
178° / 178°

Response Time
4ms (Extreme Mode),
6ms (Normal Mode)

Refresh Rate
60Hz

Brightness (Typical)
250 cd/m²

Contrast Ratio (Typical)
1000:1

Dynamic Contrast Ratio (Typical)
3M:1

Color Gamut (Coverage Ratio)
72% NTSC (CIE 1931)

Color Support (Typical)
16.7 Million

Color Depth
8-bit (6+FRC)

Anti-Glare
Yes

Connectivity

Video Signal
1 x HDMI 1.4
1 x DP 1.2
1 x VGA

Audio Signal
1 x Audio Out (3.5 mm)

USB Hub
Yes

USB Upstream
1 x USB 3.2 Gen 1¹ Type-B

USB Downstream
4 x USB 3.2 Gen 1¹ Type-A

Special Features

Software
Lenovo ThinkColour (Lenovo Display Control Center)²

Natural Low Blue Light
Yes

Power

Power Consumption (Typ. / Max.)
15W / 48W

Power Consumption Sleep/Off Mode
< 0.5W

Power Consumption Switch-Off Mode
< 0.3W

ENERGY STAR Power Consumption (Pon/E_{TEC})
12W / 37.05kWh

Power Supply
Internal

Voltage Required
AC 100 to 240 V (50-60Hz)

Mechanical

Tilt Angle (Front / Back)
-5° / 23.5°

Swivel Angle (Left / Right)
-45° / 45°

Lift (Max. Range)
155 mm

Pivot
-90° / 90°

VESA Mount Capability
Yes (100 x 100 mm)

ThinkCentre M Series Tiny Support
Yes, by Tiny Clamp Bracket Mounting Kit III (PN: 4XFIK72399)³

Kensington Lock Slot
Yes

Cable Management
Yes

Bezel Color
Raven Black

Bezel Width (Side)
2.0 mm

Bezel Width (Top / Bottom)
2.0 / 17.3 mm

Dimension

Size Packed (D x H x W) (mm/inch)
150.0 x 421.0 x 592.0 mm
5.91 x 16.57 x 23.31 inches

Size Unpacked w/ Stand (Lowest Position) (D x H x W) (mm/inch)
199.7 x 338.8 x 522.0 mm
7.86 x 13.34 x 20.55 inches

Size Unpacked w/ Stand (Highest Position) (D x H x W) (mm/inch)
199.7 x 493.8 x 522.0 mm
7.86 x 19.44 x 20.55 inches

Size Unpacked w/o Stand (Head Only) (D x H x W) (mm/inch)
46.4 x 313.1 x 522.0 mm
1.83 x 12.33 x 20.55 inches

Weight Packed (kg / lbs.)
7.3 kg / 16.1 lbs.

Weight Unpacked (kg / lbs.)
5.2 kg / 11.5 lbs.

Weight (Monitor Head Only) (kg / lbs.)
3.2 kg / 7.1 lbs.

What's in the Box

Monitor with Stand
Yes

Power Cable (Cable Length)
1 x Power Cable (1.8 m)

HDMI Cable (Cable Length)
1 x HDMI Cable (1.8 m)

USB Cable (Cable Length)
1 x USB Type-A to Type-B Cable (1.8 m)

Quick Setup Guide
Yes

Warranty Booklet
Yes

Certification

ENERGY STAR Certification
Yes

CCC
Yes

TCO
9.0

TCO Edge
2.0

EPEAT
Gold

Volatile Organic Compound Certification
Yes

RoHS (2011/65/EU)
Yes

Windows Certification
Windows 10, Windows 11

China Energy Efficiency Standard
Tier 1

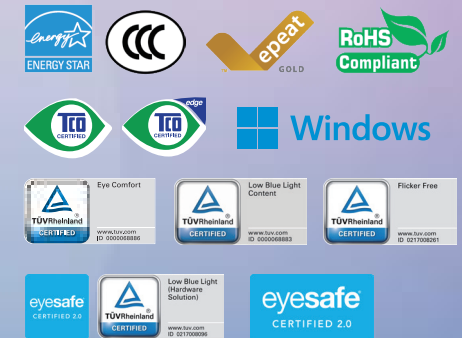
TÜV Rheinland Eye Comfort
Yes

TÜV Rheinland Low Blue Light
Yes

TÜV Rheinland Flicker Free
Yes

TÜV Low Blue Light (Hardware Solution)
Yes

Eyesafe Display Certification
Yes (Eyesafe 2.0)



¹ Depending on many factors such as the processing capability of peripheral devices, file attributes, and other factors related to system configuration and operating environments, the actual transfer rate using the various USB connectors on this device will vary and is typically slower than the data rates as defined by the respective USB specifications: 5 Gbit/s for USB 3.2 Gen 1; 10 Gbit/s for USB 3.2 Gen 2 & 20 Gbit/s for USB 3.2 Gen2x2. | ² This software can only be used with Windows 10 & Windows 11. | ³ Sold separately.

© 2023 Lenovo. All rights reserved. These products are available while supplies last. Prices shown are subject to change without notice. For any questions concerning price, please contact your Lenovo Account Executive. Lenovo is not responsible for photographic or typographic errors. Warranty: For a copy of applicable warranties, write to: Warranty Information, 500 Park Offices Drive, RTP, NC 27709, U.S.A., Attn: Dept. ZPYA/B600. Lenovo makes no representation or warranty regarding third-party products or services. Trademarks: Lenovo, the Lenovo logo, Rescue and Recovery, ThinkPad, ThinkCentre, ThinkStation, ThinkVantage, ThinkVision, and ThinkColour are trademarks or registered trademarks of Lenovo. Microsoft, Windows, and Vista are registered trademarks of Microsoft Corporation. Intel, the Intel logo, Intel Inside, Intel Core, and Core Inside are trademarks of Intel Corporation in the U.S. and/or other countries. Other company, product, and service names may be trademarks or service marks of others. Specifications may vary depending upon region.

Smarter
technology
for all

Lenovo