

# *m*C-Label3

**VERSATILE THERMAL LABEL PRINTER**



**Part of Star's popular mCollection, the mC-Label3 combines high quality, versatile thermal label printing with superior connectivity for PC, Network, Tablets and Cloud based systems.**



**mCollection**

**star** 

# mC-Label3

## Multi-functional Label Printer



### Models

**MCL32CI** – part number 39658190  
Direct thermal label printer with  
USB-C, USB-A, LAN, CloudPRNT

**MCL32CBI** – part number 39658390  
Direct thermal label printer with  
USB-C, USB-A, LAN, Bluetooth,  
CloudPRNT

### Key applications

- a Hospitality**  
Kitchen orders, food labelling
- a Retail**  
Product ID, mark down,  
shelf edge
- a Healthcare**  
Pharmacy



Adjustable label widths

The mC-Label3 prints on a wide range of liner-free media including low adhesive “re-stick” labels as well as strong adhesive permanent and semi-permanent labels. Also designed for traditional liner pre-sized labels as well as continuous label rolls and receipt paper, the mC-Label can handle it all.

**The mC-Label3 includes easy-to-use functions such as pre-stored labels activated by Star’s one touch label function as well as free Star label design software ideal for any retail or restaurant application.**

### Save paper with liner-free media

Print high resolution text, barcodes and graphics on low, mid and high adhesive linerless media with no backing paper, reducing waste and hazards in restaurant and retail environments.

For traditional liner labels the mC-Label includes Gap and Black Mark sensors to ensure accurate positioning every time.



### Adjustable label widths

The mC-Label3 prints on media from 25mm to 80mm wide, ideal for any label from food and beverage labels to jewellery to pharmacy.

The spindle-less drop-in roll holder and roll position sensors simplify label loading with label widths automatically reported to the host.

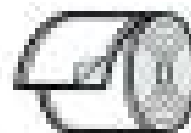
### Supports a wide range of media



Linerless Label



Die-cut Label



Continuous Label

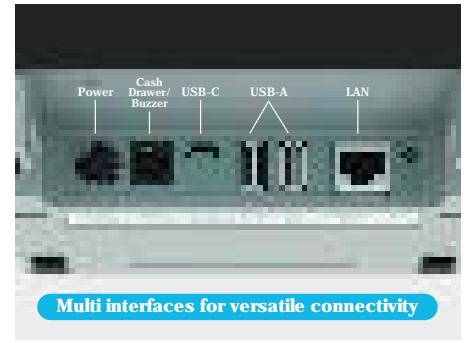


Receipt

## Ultra-connected

For PC, Network, Tablet and Cloud systems, the mC-Label3 is equipped with USB-C, 2 x USB-A and Ethernet LAN interface as standard with Bluetooth and WLAN options. The powerful 20W USB-C port can connect and charge Android and Windows mobile devices, transferring data and power for all-day-use.

**SteadyLAN** technology provides a stable wired LAN connection to mobile devices and Star's new **TetherLAN** technology allows a connected 4G or 5G device to share its network connection with the printer creating a Cloud connected printer anywhere. Cash drawers, buzzers and USB scanners can also be connected and controlled via the printer. (Android and Windows devices only)



## One-Touch-Label

Star has designed in useful features for simple operation. Clear LEDs show printer and connectivity status and useful features enhance the user experience. Star's **One-Touch-Label** feature enables three static label designs to be stored within the printer.

Simply print the stored label by pressing the multi-function button on the front with no device connection needed. Star's Paper taken sensor queues labels, preventing multiple labels printing before the previous label is taken. This is ideal in a kitchen environment for order queueing.

## Connect to the Cloud

Star's **CloudPRNT™** technology offers businesses a way of communicating directly to a receipt, ticket, label or online order printer allowing integration of online purchasing with physical stores or restaurants. Simply print food orders and labels directly from Cloud based platforms and web sites.

For customers who prefer a managed service, Star has introduced **StarPrinter.online**, a dedicated service for retailers and restaurant owners to manage their printer estate.

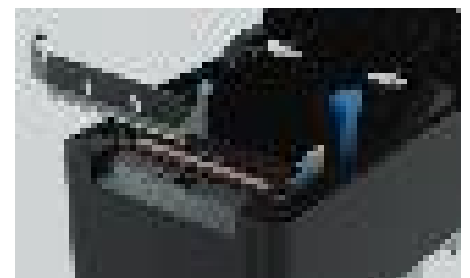


## Free Cloud Label Design Software

With **Star Micronics Cloud Services**, the mC-Label offers the flexibility to build, store, and print multiple static label templates and print them at the touch of a button. Simply use Star's free label design software to design labels and print the stored label by pressing the multi-function button on the front with no device connection needed.

## Low maintenance

With a compact splash-proof and insect proof design for kitchen environments, the mC-Label sits happily on or under the counter. Clear LEDs indicate maintenance and parts replacement requirement. The colour coded cutter and platen are designed to be simply removed and maintained or replaced by the user.



## Simple set-up and integration

Set-up has never been simpler with Star's **Quick Set-Up Utility** which also enables status checking of printers and peripherals.

For software developers, Star's multi-product API forms part of our Windows, iOS, Android and Linux based SDKs for simple integration. This, together with the back-up of Star's experienced technical support team, allows integration with platform specific, or web based/multi platform applications.



## SPECIFICATIONS

Technology	Direct Thermal Label Printer
Max. Print Speed	180mm/sec.
Resolution	8 dots/mm (203 dpi)
Media Support	Linerless labels (Restick and permanent), Die-cut labels, Continuous labels, Receipts
Autocutter	Guillotine (full and partial cut)
Paper Width	24.5 to 79.5±0.5mm
Paper Roll diameter	Max. 102mm
Media Presentation	Front loading and paper presentation
Print Width	80mm, 58mm, 40mm, 25mm
Sensors	Taken sensor, Paper jam sensor, GAP/Black mark sensor, Paper end sensor, Cover open sensor, Paper position sensor, Paper width sensor
Paper Loading	Drop-In & Print
Connectivity	<ul style="list-style-type: none"><li>• USB-C (Power Delivery) for Android and Windows. Charging only for iOS</li><li>• USB-A x 2 (Peripherals connectivity)</li><li>• Ethernet LAN (with SteadyLAN and TetherLAN technology for Android and Windows devices)</li><li>• Bluetooth (MCL32CBI model – MFi certified)</li><li>• Wireless LAN (with Optional MCW10 Wireless LAN Unit)</li><li>• Cash drawer / buzzer connection</li></ul>
Power Supply	External PS65 100~240V AC±10% Power Supply
Power Consumption	During power ON idling: Approx. 0.08 A (average) During ASCII printing: Approx. 2.1 A (average)
Emulation	StarPRNT
Reliability	For print head and cutter life for different media types, please contact Star. IP22 splash resistant
Dimensions (W x D x H)	143 x 212 x 169mm
Weight	2.0 Kg (without paper roll)
Software	Star CloudPRNT, Star WebPRNT, Star PassPRNT, StarXpand SDK, StarPRNT SDK
Included	AC Adapter Power Cable USB Cable (C-C 1m & C-A 1.8m) LAN Cable (1m) Simple Setup Sheet Safety Guide
Replacement Parts	Cutter Unit Platen Roll Unit 2 in 1 (Cutter unit & Platen unit set)
Options	Star Barcode Scanners MCW10 Wireless LAN Adapter SCD222 Customer Display mC-Sound Buzzer BU01 Buzzer CD4 Cash Drawer CB2002 Cash Drawer mUnite Tablet Stands

2024/UK

### Star Micronics EMEA

Star House, Peregrine Business Park, Gomm Road, High Wycombe, Bucks. HP13 7DL, UK  
Tel: +44 (0) 1494 471111 • Email: Sales@Star-EMEA.com