

SCANPAL™ EDA10A RUGGED TABLET

Accessories Guide

Honeywell

TABLE OF CONTENTS

1 DOCKS AND CHARGERS

Single Charging Dock

Display Dock

Quad Battery Charger

Quad Charging Base

2 POWER AND BATTERY

Power Adapter and Plugs

Battery

3 MISCELLANEOUS

Rotating Hand Strap

Protective Boot

Vesa Mount Plate

Adapter Cup for Docks

D-Clips

Shoulder Strap

Carrying Case

Stylus with Tether

Screen Film



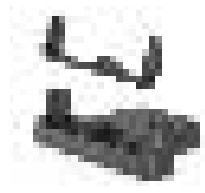
DOCKS AND CHARGERS



EDA10A-SC-R

EDA10A Booted and Non-Booted Single Charging Dock

Single charging dock for EDA10A with or without protective boot, compatible with hand strap. Kit includes: dock, convertible adapter cup (EDA10A-ADC), USB charging cable, 5V 2A power adapter, and plugs for US, UK, AU, EU, IN.

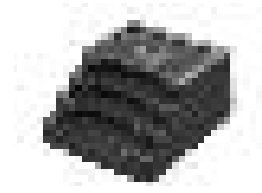


EDA10A-DB-0
EDA10A-DB-1
EDA10A-DB-2
EDA10A-DB-3
EDA10A-DB-5

EDA10A Booted and Non-Booted Display Dock

Display dock for EDA10A with or without protective boot, compatible with hand strap. Kit includes: dock, convertible adapter cup (EDA10A-ADC), power supply and power cord (-0 no power cord, -1 for U.S., -2 for Europe, -3 for UK, and -5 for AU).

Ports: 3x USB-A, 1xHDMI, 1x RJ45 Ethernet.



EDA10A-QBC-1
EDA10A-QBC-2
EDA10A-QBC-3
EDA10A-QBC-5

EDA10A Quad Battery Charging Base*

EDA10A four (4) battery packs (EDA10A-BAT). Kit includes: charging base, power supply and power cord (-1 for U.S., -2 for Europe, -3 for UK, and -5 for AU).



EDA10A-CB-0
EDA10A-CB-1
EDA10A-CB-2
EDA10A-CB-3
EDA10A-CB-5

EDA10A Quad Bay Charging Base*

Quad bay charging base for four (4) EDA10A tablets with or without protective boot, compatible with hand strap. Kit includes: dock, four (4) convertible adapter cup (EDA10A-ADC), power supply and power cord (-0 no power cord, -1 for U.S., -2 for Europe, -3 for UK, and -5 for AU).

POWER AND BATTERY



50136024-001

Power Adapter and Plugs

Kit, 5V/2A Power supply, use with ScanPal EDA10A/51/52/5S/61K/71, Mobility Edge CT40/CT60. Includes 5 plugs packed US, UK, AU, EU, IN adapters.



EDA10A-BAT

Standard Battery Pack

One (1) standard rechargeable battery, 3.85 V, 8000 mAh.

MISCELLANEOUS



EDA10A-HS-1PK

EDA10A Rotating Hand Strap (1/pk)

Kit of one (1) rotating hand strap with five (5) M3 screws.



EDA10A-RB-0

EDA10A Protective Boot

EDA10A protective boot. It is compatible with single charging dock (EDA10A-SC-R), display dock (EDA10A-DB-X), and quad bay charging base (EDA10A-CB-X).



EDA10A-MNT-VS

EDA10A VESA Mount Plate*

75 mm x 75 mm (2.95 in x 2.95 in) VESA mount kit. Includes 10 x M3 round screws.



EDA10A-ADC

EDA10A Adapter Cup

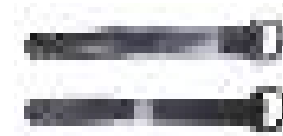
For non-booted EDA10A with single charging dock (EDA10A-SC-R), display dock (EDA10A-DB-X), and quad bay charging base (EDA10A-CB-X). Not compatible with protective boot (EDA10A-RB-0).



EDA10A-SS-1PK

EDA10A Shoulder Strap

Shoulder strap kit including D-clips (EDA10A-DCLIP-1PK). Adjustable cross-body strap with booted tablet or carrying case (EDA10A-CASE).



EDA10A-DCLIP-1PK

EDA10A D-Clips

D-Clips to be used with shoulder strap (EDA10A-SS-1PK) for booted tablet, two (2) piece per pack.



EDA10A-CASE

EDA10A Carrying Case

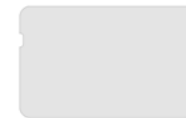
Carry bag with adjustable shoulder strap (EDA10A-SS-1PK). Separate pocket for accessories.



EDA10A-STL-1PKC

EDA10A Stylus with Tether

EDA10A stylus with tether, one (1) piece per pack. Worked with tablet with and without screen protector (EDA10A-SP-1PK).



EDA10A-SP-1PK

EDA10A Screen Protector

EDA10A screen protector, five (5) piece per pack. Can be used with stylus.

Notes,

*EDA10A VESA mount plate available 2H 2023

*EDA10A quad bay charging base available 2H 2023

*EDA10A quad battery charging base available 2H 2023

For more information

sps.honeywell.com

Honeywell Safety and Productivity Solutions

855 S Mint St
Charlotte, NC 28202
800-582-4263
www.honeywell.com