

ATRIA Wi-Fi Mesh Home Trio Pack AX3000



Performant – Reliable - Anywhere

Using state of art Easy Mesh solution, STRONG's Wi-Fi Mesh Home Trio Pack AX3000 combines Mesh technology with the powerful Wi-Fi 6 MU-MIMO standard for ultimate speed and coverage at home.

This package of 3 ATRIA Mesh AX3000 replaces your current Wi-Fi network without changing your modem or router. It brings a super-fast and seamless roaming Wi-Fi network at a speed up to 3000 Mbit/s with coverage up to 300 m².

Depending on the size of your house, you can add up to 3x additional ATRIA Mesh AX3000 (up to 6x ATRIA Mesh AX3000 cover an area of up to 600 m²).

Full Wi-Fi coverage of your house

- No more Wi-Fi dead zones
- A set of Smart Access Points to use Wi-Fi in every room

Ultra-fast & stable Wi-Fi in every room of your house

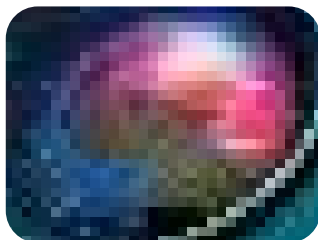
- Super 4K video delivery to every device with zero buffering
- Stream multiple UHD videos simultaneously and watch live TV from anywhere on any device
- Wi-Fi 6 dual band concurrent network at speed up to 3000 Mbit/s

Mobile and fixed devices always connected at the highest speed

- Dynamic Wi-Fi & client management based on "Easy Mesh" technology
- Multiple access points configuration to dramatically improve your network connectivity

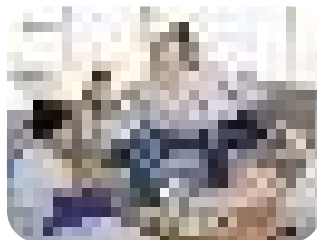


Wi-Fi performance



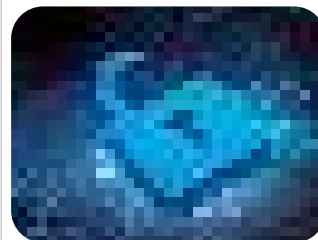
- Supports Wi-Fi 6 (802.11ax/ac/n/g/b/a) standards
- Speed up to 3000 Mbit/s
- Support MU-MIMO and OFDMA technologies
- 574 Mbit/s @2.4GHz + 2402Mbit/s @5GHz
- Support DFS Channels

Coverage & Reliability



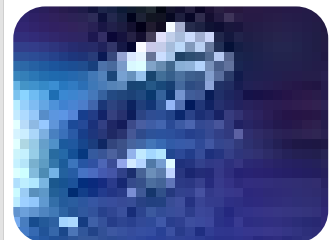
- Easy MESH Support for maximum coverage, performance and connectivity
- Up to 254 connected devices capacity
- Multiple Access Points Configuration
- Only one Wi-Fi name all over the house
- Intelligent roaming in Mesh configuration
- Wi-Fi Mesh Home Trio Pack AX3000 covers up to 300 m²
- Up to 6x ATRIA Mesh AX3000 cover up to 600 m² on multiple floors

Security



- WPA™/WPA2™ /WPA3™ for Wi-Fi security
- Connect & Secure (WPS) button to add additional ATRIA Mesh AX3000 in few minutes
- Connect & Secure (WPS) button to simply connect your Wi-Fi devices to your Wi-Fi Mesh network

Connections



- 3x Gigabit LAN/WAN Ethernet ports on each ATRIA Mesh AX3000 to connect any computer, set-top-box, Smart TV, NAS, game console, ...
- TR069/TR098/TR181 compliant
- ATRIA Mesh app to manage your Wi-Fi Mesh network at a finger touch
- Mesh/Access Point/ Router operational modes
- Works with any standard modem or router

ATRIA Wi-Fi Mesh Home Trio Pack AX3000

Wi-Fi

Frequency	2412 MHz-2462 MHz & 5180 MHz-5240 MHz & 5250 MHz-5350 MHz & 5470 MHz-5580 MHz
Standard	Wi-Fi 6 - IEEE 802.11ax/ac/n/g/b/a
Signal Rate	5 GHz: Up to 2402 Mbps 2.4 GHz: Up to 574 Mbps
Security	WPA™/WPA-PSK™ & WPA2™/ WPA2-PSK™ & WPA3-SAE™
Antennas	4* Internal Antennas (3dBi)
Transmit Power	Europe: <20 dBm (2.4 GHz), <23 dBm (5 GHz)
Supported Channels	5 GHz: 36, 40, 44, 48, 52, 56, 60, 64, 100, 104, 108, 112 2.4 GHz: 1, 2, 3, 4, 5, 6, 7, 8, 9, 10, 11, 12, 13

Hardware

CPU	Dual-core CPU 900MHz
Ethernet Ports	2x 10/100/1000M LAN ports (Auto MDI/MDIX) 1x 10/100/1000M WAN ports (Auto MDI/MDIX)
Buttons	Connect & Secure (WPS), Reset, ON/OFF button
LEDs	Power, Internet, Pairing, 2.4 GHz and 5 GHz Wi-Fi
Power Standards	External power supply, 12 V/2 A DC IEEE 802.3, IEEE 802.3u, IEEE 802.3ab

Software

Multiple SSID	4x2.4 GHz + 4x 5 GHz
Basic Network	DHCP client, IGMP v1/v2, IPv4/v6, WDS, WPS, WMM
Router Features	DHCP server, DNS relay/proxy, NAT/NAPT, IGMP proxy, Firewall, VPN passthrough, DMZ, URL/IP/MAC Filtering, Port Forwarding
UPnP Management	Universal Plug & Play Internet Gateway Device TR069/TR098/TR181, Web User Interface, Time Settings, Configuration Backup/Restore, Firmware Upgrade, System Log
ATRIA Mesh app	Android and iOS downloadable app to manage the Wi-Fi Mesh network

Mesh technology

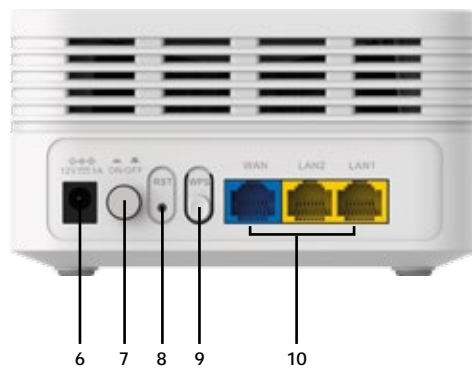
Easy MESH Compliant	Automatically Organized Network Intelligent Roaming (client band steering) Auto Configuration Seamless Roaming Auto MESH Routing User Load Balancing Auto Healing (Redundancy and Fail-over)
Multiple Access Point architecture	Up to 6x ATRIA Mesh AX3000 in one Mesh Network
Unique Wi-Fi name	Only one Wi-Fi name all over the house
Ethernet backhaul	Mesh nodes can also be connected through Ethernet for better performances

Other specifications

Certification	CE
Package Contents	3x ATRIA Mesh AX3000 3x Power Supply Units (12 V/2 A DC) 3x CAT5E Ethernet Cable 1x Installation Instructions, Warranty Card, Safety Instructions
System Requirements	Internet Browser

Environment

Operating temperature:	0° C ~ +45° C
Storage temperature:	-20° C ~ +70° C
Operating humidity:	10%~90% non-condensing
Storage humidity:	10%~90% non-condensing
Dimensions (WxDxH) per unit	128*128*73 mm
Weight per unit	320 g



1. Power LED
2. Pairing LED
3. Internet LED
4. 2.4 GHz LED
5. 5 GHz LED
6. Power supply connector
7. On/Off Power button
8. Reset button
9. Connect & Secure (WPS) button
10. 3x Gigabit LAN/WAN Ethernet ports

EAN MESHTRIAAX3000UK: 9120072374937
PCB: 6 pcs.