

ScreenCast

USB-C® Wireless Display HDMI™ Extender

JVAW62



j5create.com/screencast

- EN : Quick Installation Guide
- DE : Kurzanleitung Für Installation
- FR : Guide D'installation Rapide
- IT : Guida rapida all'installazione
- NL : Beknopte installatiehandleiding
- ES : Guía De Instalación Rápida
- PT : Guia de instalação rápida
- SE : Snabbinstallationsguide
- DK: Startvejledning
- NO: Hurtiginstallasjonsveiledning
- FI: Pika-asennusopas
- HU: Gyors telepítési útmutató
- RU: Руководство по быстрой установке
- 日本語: クイックインストールガイド
- 繁体中文: 快速安裝手冊

English

How to mirror

● **Simply plug into a laptop or mobile device**
Plug the JVAW62 TX into a USB-C® port on a laptop or mobile device. Wait a few seconds until the flashing light on the JVAW62 TX stops, and it will start mirroring automatically. If the JVAW62 TX flashes for more than 20 seconds, unplug it and then plug it back in. If it flashes for more than 20 seconds again, it will need to be paired to the JVAW62 RX.*
* See the section titled "How to pair the JVAW62 TX with the receiver" below for instructions on how to pair the TX with the RX.

● **Stop and restart mirroring**
Press the JVAW62 TX button to stop or restart mirroring.

Note:
The JVAW62 TX supports mirroring for all laptops and mobile devices running Windows®, macOS®, iPadOS®, and Android® operating systems. The USB-C® port on the device must also support DP™ output.

(Optional) Position the ScreenCast for an Optimal Streaming Experience

The USB™ Type-A connector can be attached to your TV with the double-sided adhesive strip that is included. The strip is for single-use and can be removed.

The USB™ Type-A connector is equipped with a Wi-Fi® module, antenna, and power supply; therefore, we **DO NOT** recommend placing the USB™ Type-A connector behind the TV or inside a TV cabinet. Doing so may cause a weak signal or loss of signal.

Adhesive Strip Instructions:

- Choose a flat surface to attach the USB™ connector.
- Remove the liner from the double-sided adhesive strip.
- Remove the other liner. Firmly press the USB™ connector to the desired location for 30 seconds.

(Troubleshooting) How to pair the JVAW62 TX with the receiver

● **Turn on pairing mode for the receiver**
Press the reset button (or insert the pin to press) for 2 seconds on the JVAW62 wireless display receiver. Release the button when the screen shows "Release the button to pair with ScreenCast". Please make sure your receiver has been upgraded to the latest version.
For instructions on how to upgrade your device please visit <https://j5create.com/screencast/>

● **Press the JVAW62 TX button**
Plug the JVAW62 TX into the laptop or mobile device to provide power. Press the JVAW62 TX button to complete pairing when the screen shows "Ready to pair".

Note:
The reset button on the receiver has 3 functions, which function is performed depends on the duration the button is held down.
(1) Simple click: Switch the receiver to 2.4G/5 GHz Wi-Fi® mode.
(2) Press for 2 seconds: Turns on pairing mode for the JVAW62 TX.
(3) Press for 10 seconds: Resets the receiver to default.

Wie man spiegelt

Einfach an Laptop oder Mobilgerät anschließen

Stecken Sie den JVAW62 TX in einen USB-C®-Anschluss eines Laptops oder Mobilgeräts. Warten Sie ein paar Sekunden, bis das Licht am JVAW62 TX aufhört, und es beginnt automatisch mit der Spiegelung. Bitte stellen Sie sicher, dass Sie den JVAW62 Wireless Display Receiver installieren und koppeln, wenn er länger als 20 Sekunden leuchtet.
* Siehe den Abschnitt "So koppeln Sie den JVAW62 TX mit dem Receiver" unten für Anweisungen zum Koppeln des Senders mit dem Empfänger.

● **Spiegelung stoppen und neu starten**
Drücken Sie die Taste JVAW62 TX, um die Spiegelung zu stoppen oder neu zu starten.

Hinweis:
Der JVAW62 TX unterstützt die Spiegelung für alle Laptops und mobilen Geräte mit den Betriebssystemen Windows®, macOS®, iPadOS® und Android®. Der USB-C®-Anschluss des Geräts muss auch den DP™-Ausgang unterstützen.

(Optional) ScreenCast für optimales Streaming-Erlebnis positionieren

Der USB™-Stecker kann mit dem im Lieferumfang enthaltenen doppelseitigen Klebstreifen an Ihrem Fernseher befestigt werden. Der Streifen ist für den einmaligen Gebrauch und kann entfernt werden.

Der USB™-Typ-A-Anschluss ist mit einem Wi-Fi®-Modul, einer Antenne und einer Stromversorgung ausgestattet; daher empfehlen wir **NICHT**, den USB™-Typ-A-Anschluss hinter dem Fernseher oder in einem Fernsehschrank anzubringen. Andernfalls kann dies zu einem schwachen Signal oder Signalverlust führen.

Anweisungen zum Klebstreifen:

- Wählen Sie eine flache Stelle zur Anbringung des USB™-Steckers. Achten Sie vor der Anbringung darauf, dass die Fläche sauber ist.
- Entfernen Sie die Folie vom doppelseitigen Klebstreifen. Drücken Sie die Unterseite des USB™-Anschlusses.
- Entfernen Sie die andere Folie. Drücken Sie den USB™-Anschluss 30 Sekunden an die gewünschte Stelle.

(Troubleshooting) So koppeln Sie den JVAW62 TX mit dem Receiver

● **Pairing-Modus für Receiver einschalten**
Drücken Sie die Reset-Taste (oder stecken Sie den Stift zum Drücken ein) für 2 Sekunden am drahtlosen Anzeige Receiver JVAW62. Lassen Sie die Taste los, wenn auf dem Bildschirm "Lassen Sie die Taste los, um mit ScreenCast zu koppeln" angezeigt wird. Bitte stellen Sie sicher, dass Ihr Receiver auf die neueste Version aktualisiert wurde. Eine Anleitung zum Upgrade Ihres Geräts finden Sie unter <https://j5create.com/screencast/>

● **Drücken Sie die TX-Taste des JVAW62**
Schließen Sie den JVAW62 TX an den Laptop oder das Mobilgerät an, um es mit Strom zu versorgen. Drücken Sie die Taste des JVAW62 TX, um die Kopplung abzuschließen, während auf dem Bildschirm "Bereit zum koppeln" angezeigt wird.

Hinweis:
Die Reset-Taste am Empfänger hat 3 Funktionen. Welche Funktion ausgeführt wird, hängt davon ab, wie lange die Taste gedrückt gehalten wird.
(1) Einfacher Klick: Schaltet den Receiver in den 2.4G/5 GHz Wi-Fi® Modus.
(2) 2 Sekunden lang drücken: Schaltet den Pairing-Modus für JVAW62 TX ein.
(3) 10 Sekunden lang drücken: Setzt den Receiver auf die Standardinstellungen zurück.

Comment mettre en miroir

Bien le brancher sur un ordinateur portable ou un appareil mobile

Branchez le JVAW62 TX sur le port USB-C® d'un ordinateur portable ou d'un appareil mobile. Attendez quelques secondes jusqu'à ce que la lumière clignotante sur le JVAW62TX s'arrête, et l'appareil commencera à se mettre en miroir automatiquement. Assurez-vous d'installer et d'appairer le récepteur d'a charge sans I JVAW62 s'il clignote pendant plus de 20 secondes.
* Consultez la section intitulée « Comment coupler le JVAW62 TX avec le récepteur » ci-dessous pour obtenir des instructions sur la façon de coupler le TX avec le RX.

● **Arrêter et redémarrer la mise en miroir**
Appuyez sur le bouton JVAW62 TX pour arrêter ou redémarrer la mise en miroir.

A noter :
Le JVAW62TX prend en charge la mise en miroir pour tous les ordinateurs portables et appareils mobiles exécutant les systèmes d'exploitation Windows®, macOS®, iPadOS® et Android™. Le port USB-C® de l'appareil doit également prendre en charge la sortie DP™.

(Facultatif) Positionez le ScreenCast pour une expérience de streaming optimale

Le connecteur USB™ peut être fixé à votre téléviseur avec la bande adhésive à double face qui est incluse. La bande est à usage unique et peut être enlevée.

En raison de l'inclusion du module Wi-Fi®, antenne, et alimentation avec le connecteur USB™ Type A, nous ne recommandons pas de placer le connecteur USB™ derrière le téléviseur ou à l'intérieur d'une armoire de télévision. Cela peut provoquer un signal faible ou une perte de signal.

Instructions pour la Bande Adhésive:

- Choisissez une surface plane pour fixer le connecteur USB™. Assurez-vous que la zone est propre avant de l'attacher.
- Retirez le revêtement de la bande adhésive à double face.
- Retirez l'autre revêtement. Appuyez fermement sur le connecteur USB™ aux emplacements désirés pendant 30 secondes.

(Dépannage) Comment coupler le JVAW62 TX avec un récepteur

● **Activez le mode d'appariement pour le récepteur**
Appuyez sur le bouton de redémarrage (ou insérez la broche pour appuyer) pendant 2 secondes sur le récepteur d'a charge sans I JVAW62. Relâchez le bouton lorsque l'écran a « Relâchez le bouton pour l'associer au ScreenCast ». Assurez-vous que votre récepteur a été mis à jour avec la dernière version. Pour obtenir plus d'informations sur la façon de mettre à jour votre appareil, veuillez consulter <https://j5create.com/screencast/>

● **Appuyez sur le bouton JVAW62 TX**
Branchez le JVAW62 TX sur l'ordinateur portable ou l'appareil mobile pour fournir de l'alimentation. Appuyez sur le bouton JVAW62 TX pour terminer l'appariement tandis que l'écran a « Prêt à coupler ».

A noter :
Le bouton de redémarrage sur le récepteur a 3 fonctions, la fonction effectuée dépend de la durée pendant laquelle le bouton est maintenu enfoncé.
(1) Clic simple: Passez le récepteur en mode Wi-Fi® 2.4G / 5 GHz.
(2) Appuyez pendant 2 secondes: Active le mode d'appariement pour JVAW62 TX.
(3) Appuyez pendant 10 secondes: Redémarrage du récepteur par défaut.

Come e attuare il mirroring

Basta collegarlo a un laptop o dispositivo mobile

Collegare JVAW62 TX a una porta USB-C® su un laptop o dispositivo mobile. Attendere qualche secondo nché la spia lampeggiante su JVAW62 TX non si arresta e avvia automaticamente il mirroring. Assicurarsi di installare e associare JVAW62 TX al ricevitore del display wireless JVAW62 se lampeggia per oltre 20 secondi.
* Vedere la sezione intitolata "Come associare JVAW62 TX con il ricevitore" di seguito per istruzioni su come associare TX a RX.

● **Arresto e riavvio del mirroring**
Premere il tasto JVAW62 TX per arrestare o riavviare il mirroring.

Nota:
Il ricevitore JVAW62 TX supporta il mirroring per tutti i laptop e dispositivi mobili con sistemi operativi Windows®, macOS®, iPadOS® e Android™. Anche la porta USB-C® del dispositivo deve supportare l'uscita DP™.

(Opzionale) Posizionamento di ScreenCast per un'esperienza di streaming ottimale

Il connettore USB™ può essere collegato al televisore con la striscia adesiva biadesiva inclusa. La striscia è monouso e può essere rimossa.

Grazie al connettore USB™ di tipo A incluso modulo Wi-Fi®, antenna e alimentazione, quindi, **NON** consigliamo di posizionare il connettore USB™ dietro il televisore o all'interno di un mobile TV. Ciò potrebbe causare un segnale debole o una perdita di segnale.

Istruzioni per la striscia adesiva:

- Scegliere una super cie plana per collegare il connettore USB™.
- Rimuovere il rivestimento dalla striscia biadesiva. Premere l'adesivo sulla parte inferiore del connettore USB™.
- Rimuovere l'altro rivestimento. Premere con decisione il connettore USB™ nella posizione desiderata per 30 secondi.

(Risoluzione dei problemi) Come associare JVAW62 TX al ricevitore

● **Attivare la modalità di associazione per il ricevitore**
Premere il tasto di ripristino (o inserire il perno da premere) per 2 secondi sul ricevitore del display wireless JVAW62. Rilasciare il tasto quando lo schermo mostra "Rilascia il tasto per associare a ScreenCast". Assicurarsi che il ricevitore sia stato aggiornato alla versione più recente. Per istruzioni su come aggiornare il dispositivo, visitate il sito <https://j5create.com/screencast/>

● **Premere il tasto JVAW62 TX**
Collegare JVAW62 TX al laptop o al dispositivo mobile per fornire alimentazione. Premere il tasto JVAW62 TX per completare l'associazione quando lo schermo mostra "Pronto per l'associazione".

Nota:
Il tasto di ripristino sul ricevitore dispone di 3 funzioni, la cui funzione viene eseguita dipende dalla durata della pressione del tasto.
(1) Clic semplice: Commutare il ricevitore in modalità Wi-Fi® 2.4 G/5 GHz.
(2) Premere per 2 secondi: Attiva la modalità di associazione per JVAW62 TX.
(3) Premere per 10 secondi: Ripristina le impostazioni predefinite del ricevitore.

Nederlands

Spiegelen

● **Eenvoudig aan te sluiten op een laptop of mobiel apparaat**
Sluit de JVAW62 TX aan op een USB-C®-poort van een laptop of mobiel apparaat. Wacht een paar seconden tot het lampje op de JVAW62 TX stopt met knipperen, en het automatisch begint te spiegelen. Als de JVAW62 TX langer dan 20 seconden blijft branden, koppel u deze los en sluit u het weer aan. Als het weer langer dan 20 seconden blijft branden, moet deze worden gekoppeld aan de JVAW62 RX.
Zie het gedeelte getiteld "Hoe de JVAW62 TX te koppelen met de ontvanger" hieronder voor instructies over het koppelen van de TX aan de RX.

● **Spiegelen stoppen en opnieuw starten**
Druk op de JVAW62 TX-knop om spiegelen te stoppen of opnieuw te starten.

Opmerking:
De JVAW62 TX ondersteunt spiegelen voor alle laptops en mobiele apparaten met de besturingssystemen Windows®, macOS®, iPadOS® en Android™. De USB-C®-poort op het apparaat moet ook DP™-uitvoer ondersteunen.

(Optioneel) Plaats de ScreenCast voor een optimale streaming-ervaring

De USB™-connector kan aan uw tv worden bevestigd met de meegeleverde dubbelzijdige plakstrip. De plakstrip is bedoeld voor eenmalig gebruik en kan worden verwijderd.

De USB™ Type-A-connector is uitgerust met een Wi-Fi®-module, antenne en voeding; daarom raden wij u **NIE**t aan om de USB™ Type-A-connector achter de tv of in een tv-kast te plaatsen. Dit kan een zwak signaal of signaalverlies veroorzaken.

Instructies plakstrip:

- Kies een vlak oppervlak voor het bevestigen van de USB™-connector. Zorg ervoor dat het gebied schoon is voordat u het bevestigt.
- Verwijder de voering van de dubbelzijdige plakstrip. Druk de plakstrip op de onderkant van de USB™-connector.
- Verwijder de andere voering. Druk gedurende 30 seconden de USB™-connector stevig op de gewenste locatie.

(Troubleshooting) Hoe de JVAW62 TX te koppelen met de ontvanger

● **Schakel de koppelmodus in voor de ontvanger**
Houd de resetknop van de JVAW62 draadloze display ontvanger 2 seconden ingedrukt (of stek de pin in om in te drukken). Laat de knop los wanneer op het scherm "Laat de knop los om te koppelen met ScreenCast" wordt weergegeven. Zorg ervoor dat uw ontvanger is geüpdatet naar de nieuwste versie. Ga voor instructies over het upgraden van uw apparaat naar <https://j5create.com/screencast/>

● **Druk op de knop van de JVAW62 TX**
Sluit de JVAW62 TX aan op de laptop of mobiele apparaat om deze van stroom te voorzien. Druk op de knop van de JVAW62 TX om het koppelen te voltooien terwijl "Genoed om te koppelen" op het scherm wordt weergegeven.

Note:
De RESET-knop op de ontvanger heeft 3 functies, afhankelijk van hoe lang de knop ingedrukt wordt gehouden.
(1) Eenvoudige klik: Schakelt de ontvanger in op de 2.4G/5 GHz Wi-Fi-modus.
(2) Houd 2 seconden ingedrukt: Schakelt de koppelmodus in voor JVAW62 TX.
(3) Houd 10 seconden ingedrukt: Hiermee herstelt u de standaardinstellingen van de ontvanger.

Español

Como re ejar

● **Simplemente conéctelo a una computadora portátil o dispositivo móvil**
Conecte el JVAW62 TX a un puerto USB-C® en una computadora portátil o dispositivo móvil. Espere unos segundos hasta que la luz parpadeante del JVAW62 TX se detenga y comenzará a re ejar automáticamente.
* Asegúrese de instalar y emparejar el JVAW62 TX con el receptor de pantalla inalámbrico JVAW62 si se enciende durante más de 20 segundos.

● **Detenga y reinicie la duplicación**
Presione el botón TX JVAW62 para detener o reiniciar la duplicación.

Nota:
El JVAW62 TX admite la duplicación para todas las computadoras portátiles y dispositivos móviles que ejecutan los sistemas operativos Windows®, macOS®, iPadOS® y Android™. El puerto USB-C® del dispositivo también debe admitir la salida DP™.

(Opcional) Coloque ScreenCast para una experiencia de transmisión óptima

El conector USB™ Type-A se puede conectar a su televisor con la tira adhesiva de doble cara que se incluye. La tira es para un solo uso y se puede quitar.

Debido al conector USB™ Type-A incluido, módulo Wi-Fi®, Antena y fuente de alimentación, por lo tanto, **NO** recomendamos colocar el conector USB™ Type-A detrás del televisor o dentro de un mueble de televisión. Hacerlo puede causar una señal débil o pérdida de señal.

Instrucciones de la tira adhesiva

- Elija una super cie plana para conectar el conector USB™. Asegúrese de que el área está limpia antes de colocarla.
- Retire el revestimiento de la tira adhesiva de doble cara. Presione el adhesivo en la parte inferior del conector USB™.
- Retire el otro revestimiento. Presione firmemente el conector USB™ en la ubicación deseada durante 30 segundos.

(Solución de problemas) Cómo emparejar el JVAW62 TX con el receptor

● **Active el modo de emparejamiento para el receptor**
Presione el botón de reinicio (o inserte el pin para presionar) durante 2 segundos en el receptor de pantalla inalámbrico JVAW62. Suelte el botón cuando la pantalla muestre "Suelte el botón para emparejar con ScreenCast".
Asegúrese de que su receptor se haya actualizado a la última versión. Para obtener instrucciones sobre cómo actualizar su dispositivo, visite <https://j5create.com/screencast/>

● **Presione el botón TX JVAW62**
Conecte el JVAW62 TX a la computadora portátil o dispositivo móvil para proporcionar energía. Presione el botón JVAW62 TX para completar el emparejamiento cuando la pantalla muestre "Listo para emparejar".

Nota:
El botón de reinicio del receptor tiene 3 funciones, cuya función se realiza depende del tiempo que se mantenga presionado el botón.
(1) Presione simple: cambie el receptor al modo Wi-Fi® de 2.4G / 5 GHz.
(2) Presione durante 2 segundos: Active el modo de emparejamiento para el JVAW62 TX.
(3) Presione durante 10 segundos: restablece el receptor a los valores predeterminados.

Português

Como espelhar

● **Basta ligar a um computador portátil ou dispositivo móvel**
Ligue o JVAW62 TX a uma porta USB-C® de um computador portátil ou dispositivo móvel. Aguarde alguns segundos até que a luz do JVAW62 TX deixe de piscar, e o espelhamento iniciará automaticamente. Instale e associe o JVAW62 TX ao receptor de monitor sem os JVAW62 se o indicador piscar durante mais de 20 segundos.
* Consulte a secção "Como emparelhar o JVAW62 TX com o receptor" para obter instruções sobre como emparelhar o transmissor com o receptor.

● **Parar e reiniciar o espelhamento**
Pressione o botão do JVAW62 TX para parar ou reiniciar o espelhamento.

Nota:
O JVAW62 TX suporta o espelhamento de todos os computadores portáteis e dispositivos móveis com os sistemas operativos Windows®, macOS®, iPadOS® e Android™. A porta USB-C® do dispositivo deve também suportar a saída DP™.

(Opcional) Posicionar o ScreenCast para uma experiência ideal de transmissão

O conector USB™ pode ser a xado na sua TV com a ta adesiva de dupla face fornecida com o produto. A ta é de utilização única e pode ser removida.

Devido ao conector USB™ Tipo A incluído módulo Wi-Fi®, antena e fonte de alimentação, portanto, **NÃO** recomendamos a colocação do conector USB™ atrás da TV ou no interior de um armário de TV. Se o zer pode originar perda ou degradação do sinal.

Instruções para colocação da ta adesiva:

- Escolha uma superfície plana para a xar o conector USB™. Certifique-se de que o local está limpo antes de o a xar.
- Remova a película da ta adesiva de dupla face. Cole a ta na parte inferior do conector USB™.
- Remova a outra película. Cole o conector USB™ no local desejado pressionando firmemente durante 30 segundos.

(Resolução de problemas) Como emparelhar o JVAW62 TX com o receptor

● **Ativar o modo de emparelhamento no receptor**
Pressione o botão de reposição (ou insira um alinete para pressionar) durante 2 segundos no receptor de monitor sem os JVAW62. Liberte o botão quando o ecrã mostrar a mensagem "Liberte o botão para emparelhar com ScreenCast". Certifique-se de que o seu receptor está atualizado para a versão mais recente. Para obter instruções sobre como atualizar o seu dispositivo, visite <https://j5create.com/screencast/>

● **Pressione o botão JVAW62 TX**
Ligue o JVAW62 TX ao computador portátil ou dispositivo móvel para fornecer energia. Pressione o botão do JVAW62 TX para concluir o emparelhamento quando o ecrã mostrar a mensagem "Preparado para emparelhar".

Nota:
O botão de reposição do receptor disponibiliza 3 funções, cuja seleção depende do tempo durante o qual o botão é pressionado.
(1) Clique simples: Mudar o receptor para o modo de Wi-Fi® 2.4G/5 GHz.
(2) Pressione durante 2 segundos: Ativa o modo de emparelhamento do JVAW62 TX.
(3) Pressione durante 10 segundos: Repõe as predefinições do receptor.

Svenska

Hur du speglar

● **Anslut till en bärbar dator eller en mobil enhet**
Anslut JVAW62 TX till en USB-C®-port på en bärbar dator eller mobil enhet. Vanta några sekunder tills den blinkande lampan på JVAW62 TX slutar att blinka, så börjar speglingen automatiskt. Se till att installera och koppla JVAW62 TX till JVAW62-mottagaren för trådlös visning om den blinkar i över 20 sekunder.
* Se avsnittet "Hur du kopplar ihop JVAW62 TX med mottagaren" nedan för instruktioner om hur du kopplar TX till RX.

● **Stoppa och starta om spegling**
Tryck på JVAW62 TX-knappen för att stoppa eller starta om speglingen.

Obs!
O JVAW62 TX stöder spegling för alla bärbara datorer och mobila enheter som kör operativsystemen Windows®, macOS®, iPadOS® och Android™. USB-C®-porten på enheten måste också stödja DP™-utgång.

(Tillval) Placera ScreenCast-enheten för optimal streamingupplevelse

USB™-kontakten kan anslutas till din TV med den dubbelzijdige självhäftande remsan som medföljer. Remsan är för engångsbruk och kan tas bort.

På grund av USB™ Type-A-anslutning ingår Wi-Fi®-modul, antenn och strömförsörjning, därför gör vi **INTE** att du placerar USB™-kontakten bakom TV:n eller inuti ett TV-skåp. Om du gör det kan det orsaka svag signal eller signalförlust.

Anvisningar för självhäftande remsan:

- Välj en plan yta för att ansluta USB™-kontakten.
- Ta bort skyddsbremsan från den dubbelzijdige självhäftande remsan. Pressa limsidan mot USB™-kontaktens undersida.
- Ta bort den andra skyddsbremsan Tryck ordentligt på USB™-kontakten på ordnad plats i 30 sekunder.

(Felsökning) Hur du kopplar ihop JVAW62 TX med mottagaren

● **Aktivera kopplingslaget på mottagaren**
Tryck på återställningsknappen (eller sätt in stiftet för att trycka) i 2 sekunder på den trådlösa JVAW62-mottagaren. Slapp knappen när skärmen visar "Slapp knappen för att koppla ihop med ScreenCast". Kontrollera att din mottagare har uppdaterats till den senaste versionen. För instruktioner om hur du uppdaterar din enhet, besök <https://j5create.com/screencast/>

● **Tryck på knappen JVAW62 TX**
Anslut JVAW62 TX till den bärbara datorn eller den mobila enheten för att få ström. Tryck på JVAW62 TX-knappen för att slutföra kopplingen när skärmen visar "Redo att koppla".

Obs!
Återställningsknappen på mottagaren har 3 funktioner, vilken funktion som utförs beror på hur länge knappen hålls intryckt.
(1) Ett enkelt tryck: Ställ om mottagaren till 2.4G/5 GHz Wi-Fi®-läge.
(2) Tryck i 2 sekunder: Aktivera kopplingslaget för JVAW62 TX.
(3) Tryck i 10 sekunder: Återställ mottagaren till standardinställningen.

FCC Warning Statements

This equipment has been tested and found to comply with the limits for a Class B digital device, pursuant to part 15 of the FCC Rules. These limits are designed to provide reasonable protection against harmful interference in a residential installation. This equipment generates, uses and can radiate radio frequency energy and, if not installed and used in accordance with the instructions, may cause harmful interference to radio communications. However, there is no guarantee that interference will not occur in a particular installation. If this equipment does cause harmful interference to radio or television reception, which can be determined by turning the equipment off and on, the user is encouraged to try to correct the interference by one or more of the following measures:

- Reorient or relocate the receiving antenna.
- Increase the separation between the equipment and receiver.
- Connect the equipment into an outlet on a circuit different from that to which the receiver is connected.
- Consult the dealer or an experienced radio/TV technician for help. This device complies with part 15 of the FCC Rules. Operation is subject to the following two conditions: (1) This device may not cause harmful interference, and (2) this device must accept any interference received, including interference that may cause undesired operation. Changes or modifications not expressly approved by the party responsible for compliance could void the user's authority to operate the equipment.

FCC RF Exposure Warning

- This device has been evaluated to meet general RF exposure requirements. The device can be used in portable exposure conditions without restriction.
- The product is restricted for indoor use only.

NCC 警語

依據(低功率射頻器材技術規範)

取得審驗證明之低功率射頻器材(非經核准之公司、商號或使用者均不得擅自變更原功率、加大功率或變更原設計之特性及功能)。低功率射頻器材之使用不得影響航航安全及干擾合法通信；經發現有干擾現象時，應立即停用，並改善至無干擾時方得繼續使用。前述合法通信，指依電信管理法規作業之無線電通信。低功率射頻器材須忍受合法通信或工業、科學及醫療用電磁輻射性電機設備之干擾。

Limited Warranty

J5create offers a limited 1-year warranty. User's wear & tear damage is not included. The user shall call or email J5create customer service with the defect information of the product within 30 days of the return authorization number. Users are responsible for one-way return freight cost and we will take care of one-way freight back. In order to obtain a return authorization number, users should have the following information handy when calling or emailing the service team:

- (i) a copy of the original purchase invoice to verify your warranty
- (ii) a product serial number
- (iii) a description of the problem
- (iv) customer's name, address, and telephone number

Limited Warranty

J5create does not warrant that the operation of the product will be uninterrupted or error-free. J5create is not responsible for damage arising from failure to follow instructions relating to the product's use. This warranty does not apply to: (a) consumable parts, unless damage has occurred due to a defect in materials or workmanship; (b) cosmetic damage, including but not limited to scratches, dents, and broken plastic on ports; (c) damage caused by use with non-J5create products; (d) damage caused by natural disasters; (e) damage caused by human misuse (lost, accident, abuse, misuse or other external causes); (f) damage caused by operation of the product outside the permitted or intended uses described by J5create; (g) damage caused by service (including upgrades and expansions) made by anyone who is not by J5create or a J5create Authorized Service Provider; (h) a product or part that has been modified to alter functionality or capability without the written permission of J5create; or (i) if any J5create serial number on the product has been removed or defaced. If such a situation occurs, J5create will calculate the cost of materials and repair for your reference. This warranty is given by J5create in lieu of any other warranties expressed or implied.

Limitation of Warranty

THIS WARRANTY GIVES YOU SPECIFIC LEGAL RIGHTS, AND YOU MAY HAVE OTHER RIGHTS THAT VARY FROM STATE TO STATE, OR BY COUNTRY OR PROVINCE) OTHER THAN AS PERMITTED BY LAW. J5CREATE DOES NOT EXCLUDE, LIMIT OR SUSPEND OTHER RIGHTS YOU MAY HAVE, INCLUDING THOSE THAT MAY ARISE FROM THE NONCONFORMITY OF A SALES CONTRACT. FOR A FULL UNDERSTANDING OF YOUR RIGHTS YOU SHOULD CONSULT THE LAWS OF YOUR COUNTRY, PROVINCE, OR STATE, TO THE EXTENT NOT PROHIBITED BY LAW IN YOUR STATE, PROVINCE, JURISDICTION OR COUNTRY. THIS WARRANTY AND THE REMEDIES SET FORTH ARE EXCLUSIVE AND IN LIEU OF ALL OTHER WARRANTIES, REMEDIES AND CONDITIONS, WHETHER ORAL, WRITTEN, STATUTORY, EXPRESS OR IMPLIED.

J5CREATE'S RESPONSIBILITY FOR MALFUNCTIONS AND DEFECTS IN HARDWARE AND/OR SOFTWARE IS LIMITED TO REPAIR OR REPLACEMENT AS SET FORTH IN THIS WARRANTY. J5CREATE'S LIABILITY DOES NOT EXTEND BEYOND THE REMEDIES PROVIDED FOR IN THIS LIMITED WARRANTY, AND J5CREATE DOES NOT ACCEPT LIABILITY FOR CONSEQUENTIAL OR INCIDENTAL DAMAGES. FOR THIRD-PARTY CLAIMS AGAINST YOU FOR DAMAGES, FOR PRODUCTS NOT BEING AVAILABLE FOR USE, OR FOR LOST OR DAMAGED DATA OR SOFTWARE, J5CREATE DOES NOT ACCEPT LIABILITY. THE EXTENT OF J5CREATE'S LIABILITY IS LIMITED TO THE EXTENT OF THE REMEDIES PROVIDED FOR IN THIS WARRANTY. THIS WARRANTY IS GIVEN BY J5CREATE IN LIEU OF ANY OTHER WARRANTIES EXPRESSED OR IMPLIED.

J5CREATE'S LIABILITY IN ANY SITUATION WILL BE NO MORE THAN THE AMOUNT YOU PAID FOR THE SPECIFIC PRODUCT THAT IS THE SUBJECT OF A CLAIM. THIS IS THE MAXIMUM AMOUNT FOR WHICH WE ARE RESPONSIBLE, EXCEPT FOR THE EXPRESS WARRANTIES CONTAINED IN THIS WARRANTY AND TO THE EXTENT NOT PROHIBITED BY LAW. J5CREATE DISCLAIMS ALL OTHER WARRANTIES AND CONDITIONS, EXPRESS OR IMPLIED, STATUTORY OR OTHERWISE, INCLUDING WITHOUT LIMITATION, WARRANTIES OF MERCHANTABILITY, MERCHANTABLE QUALITY AND FITNESS FOR A PARTICULAR PURPOSE AND WARRANTIES AND CONDITIONS AGAINST HIDDEN OR LATENT DEFECTS. SOME STATES, PROVINCES, JURISDICTIONS OR COUNTRIES DO NOT ALLOW DISCLAIMERS OF IMPLIED WARRANTIES AND CONDITIONS, SO THIS DISCLAIMER MAY NOT APPLY TO YOU.

TO THE EXTENT SUCH WARRANTIES AND CONDITIONS CANNOT BE DISCLAIMED UNDER THE LAWS OF THE UNITED STATES, CANADA (AND ITS PROVINCES) OR OTHERWISE, J5CREATE LIMITS THE DURATION AND REMEDIES OF SUCH WARRANTIES AND CONDITIONS TO THE DURATION OF THIS EXPRESS LIMITED WARRANTY AND, AT J5CREATE'S OPTION, REPAIR OR REPLACEMENT SERVICES. SOME STATES, PROVINCES, JURISDICTIONS OR COUNTRIES MAY NOT ALLOW LIMITATIONS ON HOW LONG AN IMPLIED WARRANTY OR CONDITION MAY LAST, SO THE LIMITATION DESCRIBED ABOVE MAY NOT APPLY TO YOU.

NO WARRANTIES OR CONDITIONS, WHETHER EXPRESS OR IMPLIED, WILL APPLY AFTER THE LIMITED WARRANTY PERIOD HAS EXPIRED. SOME STATES, PROVINCES, JURISDICTIONS OR COUNTRIES DO NOT ALLOW LIMITATIONS ON HOW LONG AN IMPLIED WARRANTY OR CONDITION LASTS, SO THIS LIMITATION MAY NOT APPLY TO YOU.

WARRANTY SUPPORT ONLY APPLIES WHEN THE COVERED PRODUCT IS LOCATED WITHIN THE COUNTRY IN WHICH J5CREATE ORIGINALLY SOLD THE SYSTEM, AS REFLECTED IN J5CREATE'S RECORDS. IF YOU NEED SUPPORT FOR THE PRODUCT OUTSIDE OF THE COUNTRY OF ORIGIN (FOR EXAMPLE, WHILE TRAVELING, OR IF THE SYSTEM HAS BEEN RELOCATED TO A NEW COUNTRY), THEN J5CREATE MAY OFFER YOU OTHER SUPPORT OPTIONS FOR AN ADDITIONAL CHARGE.

For more information please visit our website at <http://www.j5create.com>

Copyright © 2022 J5create. All rights reserved. All trade names are registered trademarks of their respective owners. Features and specifications are subject to change without notice. Product may not be exactly as shown in the diagrams.

STOP!

If you have any problems with this product, please contact our technical support team for assistance.

TECHNICAL SUPPORT

Customer Service : 888-988-0488

Technical Support : 888-689-4088

Email : service@j5create.com

Service Hours : Mon. - Fri. 10:00 - 18:00 E.S.T

SOPORTE TÉCNICO

Número gratuito: +1-888-988-0488

Horario de atención:

Lun-Vier. 10:00 am - 6:00 U.S.A.-E.S.T

Email: service@j5create.com

Kajiet Technology International B.V.

Teléfono: +31-(0)6-2880 2882

Dres: Zomerdoorn 20

Rotterdam, Netherlands 3068MZ

E-mail: service@j5create.com

お客様相談センター : 03-5540-9010

電子メール: j5_support@solinet.co.jp

テクニカルサポートやその他のご相談は下記の

時間帯にさせていただきますようお願い申し上げます

営業時間: 平日9:30~11:30/13:30~17:30

TECHNISCHER SUPPORT

Kostenlos Anruf bei:

+1-888-988-0488

Sprechstunden:

Mon.-Frei. 10:00 – 18:00 U.S.A.-E.S.T

E-mail: service@j5create.com

SUPPORT TECHNIQUE

Numéro gratuit :

+1-888-988-0488

Heures d'ouverture :

Lun.-Ven. 10:00 am – 06:00 U.S.A.-E.S.T

Email : service@j5create.com

技術支援資訊

美國客服專線 : +1-888-988-0488

台灣客服專線 : +886-2-2269-5533#19

客服時間 :

星期一至星期五9:30 AM-6:00PM (台灣時間)

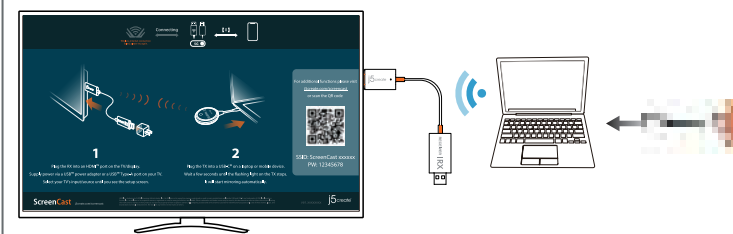
E-mail: service@j5create.com

USB-C and USB are trademarks of USB Implementers Forum, Inc. It is a logo or its respective owners, registered or used in many jurisdictions worldwide. HDMI is a trademark of HDMI Licensing Administrator, Inc. It is a logo or its respective owners, registered or used in many jurisdictions worldwide. macOS, iPadOS, and Apple are trademarks of Apple Inc. It is a logo or its respective owners, registered or used in many jurisdictions worldwide. Android is a trademark of Google LLC. It is a logo or its respective owners, registered or used in many jurisdictions worldwide. DP is a trademark of Intel Corporation. It is a logo or its respective owners, registered or used in many jurisdictions worldwide. Other trademarks and trade names may be used in this document, claiming the marks and/or names of their products and/or the property of their respective owners. All company, product and service names used are for identification purposes only. Use of these names, logos, and brands does not imply endorsement. We disclaim any interest in the marks of others.

Dansk

Sådan spejles enheden

● Du skal blot tilslutte en bærbar computer eller en mobilenhed
Slut din JVAW62 TX til en USB-C* port på en bærbar computer eller en mobilenhed. Vent et par sekunder, indtil indikatoren på din JVAW62 TX holder op med at blinke, hvorefter enheden automatisk spejler. Hvis indikatoren på din JVAW62 TX blinker i mere end 20 sekunder, skal du trække stikket ud og tilslutte det igen. Hvis indikatoren blinker i mere end 20 sekunder igen, skal enheden igen parres med din JVAW62 RX.*
* I afsnittet "Sådan parres din JVAW62 TX med modtageren" kan du se, hvordan du parrer din TX med din RX.



● Sådan stoppes og genstartes spejlingen

Tryk på knappen JVAW62 TX for at stoppe eller genstarte spejlingen

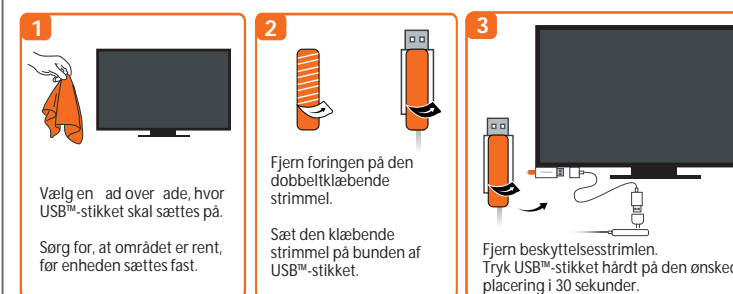
Bemærk:
JVAW62 TX kan bruges til spejling på alle bærbare computere og mobilenheder, der bruger Windows®, macOS®, iPadOS® og Android™.
USB-C*-porten på enheden skal også understøtte DP™.

(Ekstra) Sådan placeres din ScreenCast, så du får en optimal streamingoplevelse

USB™ Type-A-stikket kan slutes til tv med den medfølgende dobbeltsidige selvklæbende striimmel. Strimlen er til engangsbrug og den kan tages af.

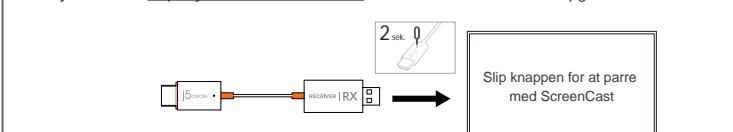
USB™ Type-A-stikket er udstyret med Wi-Fi-FI*-modul, en antenne og en strømforsyning. Det anbefales derfor IKKE at sætte USB™ Type-A-stikket bag tv'et eller i et tv-skab. Hvis du gør dette, kan signalet blive svagt eller du kan miste signalet helt.

Vejsledninger til de selvklæbende striimler:

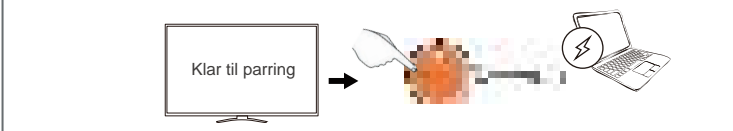


(Fejl) nding) Sådan parres din JVAW62 TX med modtageren

● Slå paringsfunktionen til på modtageren
Hold nulstillingknappen (eller hold den nede med en stift) i 2 sekunder på den tredoble skjermmodtager JVAW62. Slip knappen, når skærmen viser "Slip knappen for at pare med ScreenCast".
Sørg for, at din modtager er blevet opgraderet til den seneste version.
På hjemmesiden <https://j5create.com/screencast/> kan du se, hvordan enheden opgraderes.

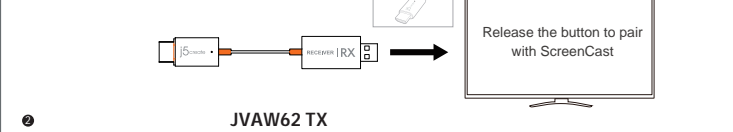
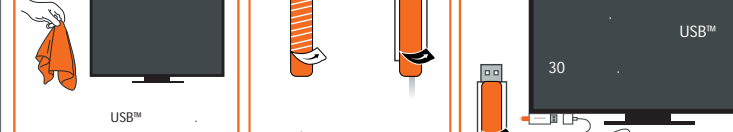
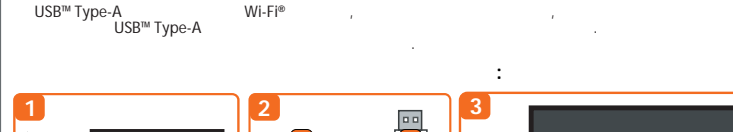
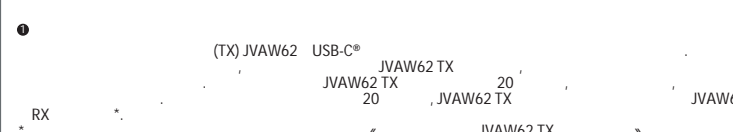
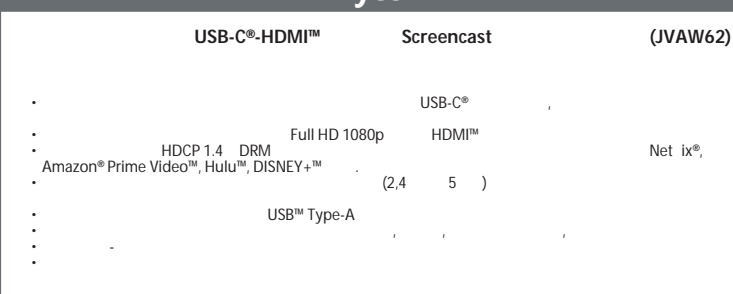


● Tryk på JVAW62 TX-knappen
Slut din JVAW62 TX til din bærbare computer eller din mobilenhed for, at forsynse strøm. Tryk på knappen JVAW62 TX for at genneføre paringen, når skærmen viser "Klar til paring".



Bemærk:
Nulstillingsknappen på modtageren har 3 funktioner. Hvilken funktion der udføres afhænger af, hvor længe knappen holdes nede.
(1) Et tryk på knappen: Modtageren skifter mellem 2.4G/5 GHz Wi-Fi*
(2) Knappen holdes nede i 2 sekunder: Aktiverer paringsfunktionen på JVAW62 TX.
(3) Knappen holdes nede i 10 sekunder: Nulstiller modtageren til standard.

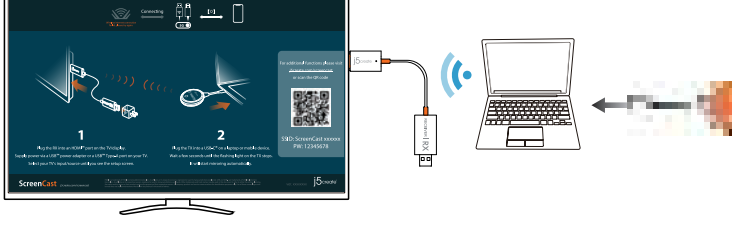
Русский



Norsk

Hvordan spille

● Bare koble til en bærbar PC eller mobilhnet
Koble JVAW62 TX til en USB-C* port på en bærbar PC eller mobilhnet. Vent noen sekunder, indtil indikatoren på din JVAW62 TX holder op med at blinke, så begynner spejling automatisk. Hvis JVAW62 TX blinker i mer enn 20 sekunder, koble du fra og koble til på nytt. Hvis den blinker i mer enn 20 sekunder igjen, må den pares med JVAW62 RX.*
* Se delen med tittelen «Hvordan pare JVAW62 TX med mottakeren» nedenfor for instruksjoner om hvordan du parer sender med mottaker.



● Stopp og start spejling på nytt

Tryk på knappen JVAW62 TX for at stoppe eller starte spejling på nytt

Obs:
JVAW62 TX støtter spejling for alle bærbare datamaskiner og mobile enheter som kjører operativsystemene Windows®, macOS®, iPadOS® og Android™.
USB-C*-porten på enheten må også støtte DP™-utgang.

(Valgfritt) Plasser ScreenCast-enheten for en optimal strømmeoplevelse

USB™ Type-A-kontakten kan kobles til TV-en med den medfølgende dobbeltsidige selvklæbende strippen. Stripen er til engangsbruk og kan tas av.

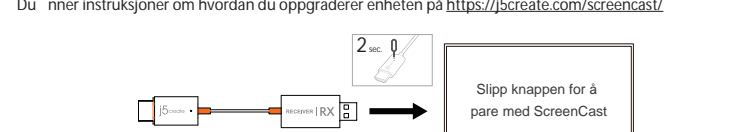
USB™ Type-A-kontakten er utstyrt med en Wi-Fi-FI*-modul, antenne og strømforsyning. Derfor anbefaler vi IKKE at du plasserer USB™ Type-A-kontakten bak TV-en eller inne i et TV-skap. Det kan føre til et svakt signal eller tap av signal.

Instruksjoner for selvklæbende stripe:



(Feilsøking) Hvordan pare JVAW62 TX med mottakeren

● Slå på paringsmodus for mottakeren
Tryk tilbakestillingsknappen (eller sett inn pinnen for å trykke) i 2 sekunder på JVAW62 tredobles skjermmodtager. Slip knappen når skærmen viser «Slip knappen for å pare med ScreenCast».
Sørg for at mottakeren er oppgradert til siste versjon.
Du finner instruksjoner om hvordan du oppgraderer enheten på <https://j5create.com/screencast/>.



● Trykk på JVAW62 TX-knappen
Koble JVAW62 TX til din bærbare datamaskin eller mobilheten for å gi strøm. Tryk på JVAW62 TX-knappen for å fullføre paring når skærmen viser «Klar til å pare».

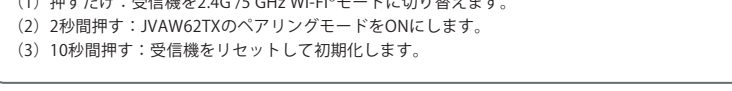
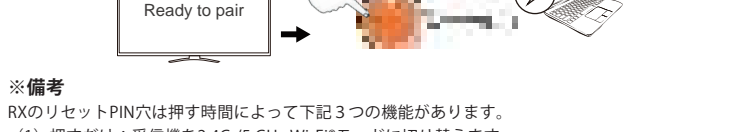
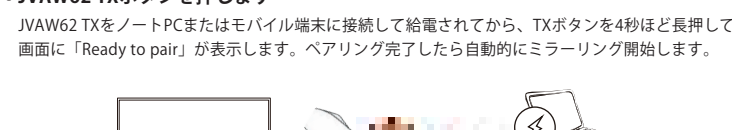
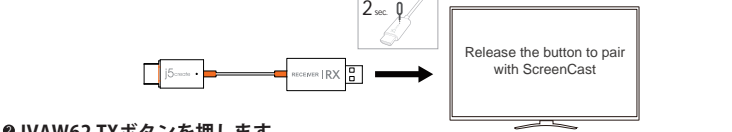
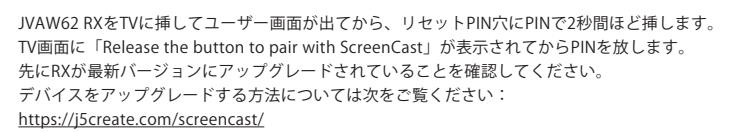
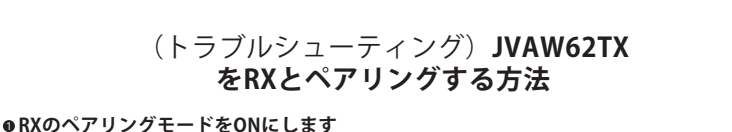
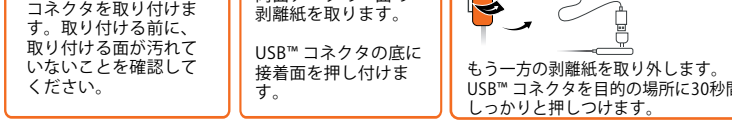
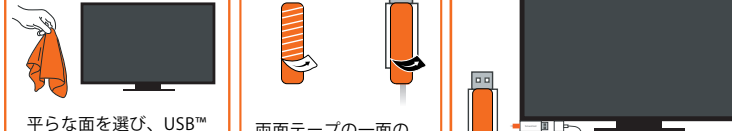
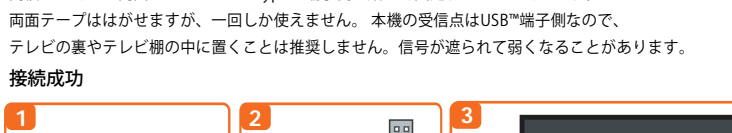
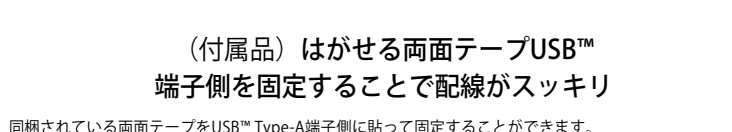
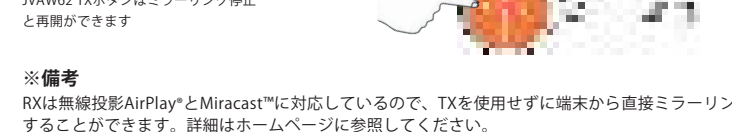


Obs:
Tilbakestillingsknappen på mottakeren har 3 funksjoner. Hvilken funksjon som utføres, avhenger av hvor lenge knappen holdes nede.
(1) Enkelt klikk: Bytt mottakeren til 2.4G/5 GHz Wi-Fi*-modus.
(2) Hold inne i 2 sekunder: Slår på paringsmodus for JVAW62 TX.
(3) Hold inne i 10 sekunder: Tilbakestiller mottakeren til standard.

日本語

ミラーリング方法

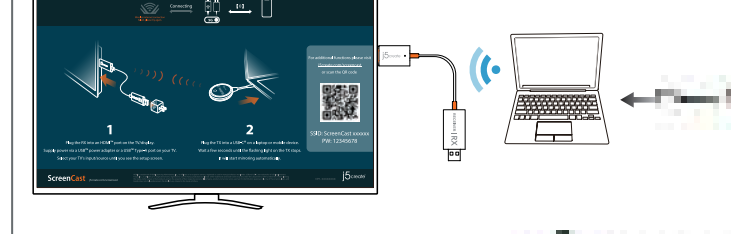
● 端末に接続すれば簡単に使用できます
JVAW62のRX (受信機) をテレビに接続して、TX (送信機) をUSB-Cが備ったノートPCやモバイル端末に接続してからTXのLEDライトが点滅し、数秒待ってからミラーリングが開始します。もし20秒以上点滅してミラーリング開始しない場合は、JVAW62TXとRXを改めてペアリングしてください。ペアリングする方法は下記手順を参考してください。
● JVAW62 TXの初期化は、接続された機器のUSB-C*ポートでDP*出力 (ビデオ出力) をサポートしている必要があります。Windows®, macOS®, iPadOS®, およびAndroid™に対応しています。



Suomi

Peilaaminen

● Liitä vain kannettavaan tai mobiililaitteeseen
Kobla JVAW62 TX kannettavaan tai mobiililaitteen USB-C* porttiin. Odota muutama sekunti, kunnes JVAW62 TX:n valko valo sammuu, laite alottaa peilaamisen automaattisesti. Jos JVAW62 TX vilkkuu yli 20 sekuntia, irrota se verkkovirrasta ja liitä sitten uudelleen. Jos se vilkkuu yli 20 sekuntia uudelleen, se on parituttava JVAW62 RX:n kanssa.*
* Katso alla olevasta "kuinka JVAW62 TX paritetaan vastaanottimen kanssa"-osasta ohjeet TX:n ja RX:n parittamisesta.



● Pysäytä peilaus ja käynnistä se uudelleen

Paina JVAW62 TX -painiketta pysäyttääksesi peilauksen tai käynnistääksesi sen uudelleen

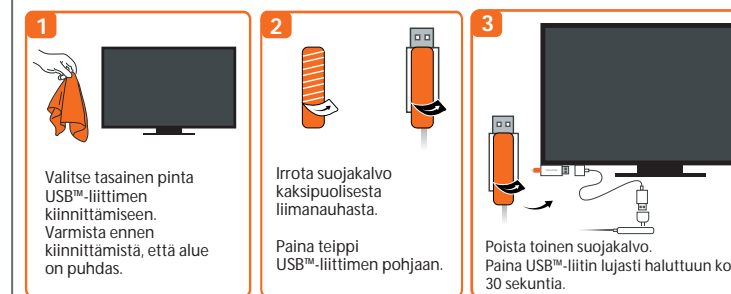
Huomautus:
JVAW62 TX tukee peilausta kaikissa kannettavissa ja mobiililaitteissa, joissa on Windows®, macOS®, iPadOS® tai Android™ -käyttöjärjestelmä.
Laitteen USB-C*-porttiin on tuettava myös DP™-lähtö.

(Valinnainen) Sijoita ScreenCast saadaksesi optimaalisen strimauskokemuksen

USB™ Type-A-liittimen voi kiinnittää TV-vastaanottimeen toimitukseen kuuluvalla kaksipuolisella teipillä. Teippi on kertakäyttöinen eikä sitä voi poistaa.

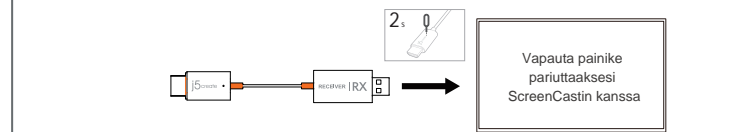
USB™ Type-A-liitin on varustettu Wi-Fi-FI*-moduulla, antennilla ja virransyöttöyksellä: siksi EMME suosittelemme USB™ Type-A-liittimen sijoittamista TV-vastaanottimen takaseinälle tai sen kotelon sisään. Jos niin tehdään, seurauksena voi olla heikko signaali tai signaalin menetyk.

Teipinkäyttöohjeet:

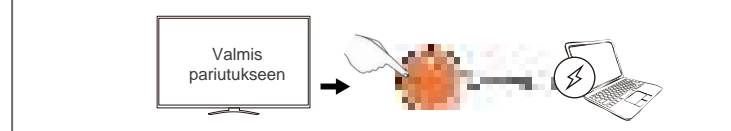


(Vianetsintä) JVAW62 TX:n parittaminen vastaanottimen kanssa

● Kytke paritustila päälle vastaanottimen varten
Paina nollapainiketta (tai vie neula sisään painikkeeseen) 2 sekuntia langattomassa JVAW62 -näytönohjelmassa. Vapauta painike, kun näytössä näkyy "Vapauta painike paritustaaksesi ScreenCastin kanssa". Varmista, että vastaanotin on päivitetty uusimpaan versioon.
Katso laitteen päivitysohjeet osoitteesta <https://j5create.com/screencast/>.



● Paina JVAW62 TX -painiketta
Liitä JVAW62 TX kannettavaan tai mobiililaitteeseen virran syöttämiseksi. Paina JVAW62 TX -painiketta suorittaaksesi parituksen loppuun, kun näytössä näkyy "Valmis paritukseen".



Huomautus:
Vastaanottimen nollapainikkeella on 3 toimintoa, suoritettava toiminto on painettuna pitämisen keston mukainen.
(1) Enkeltä painallus: Kytke vastaanottimen 2.4 G / 5 GHz Wi-Fi* -tilaan.
(2) Paina 2 sekuntia: Kytke paritustila päälle JVAW62 TX:ää varten.
(3) Paina 10 sekuntia: Nollaa vastaanottimen oletukseen.

繁體中文

使用方式

● 直接連接筆電或是行動裝置
將 JVAW62 插入筆電或是行動裝置的 USB-C* 孔。等待數秒後，JVAW62 TX 上的指示燈將會停止閃爍自動開始傳輸畫面。如果指示燈閃爍超過 20 秒，請先檢查 JVAW62 接收器是否安裝正確或是重新進行配對。
※ 請參考下方「如何配對 JVAW62 TX 與接收器」瞭解如何配對 TX 與 RX。

