

B-TECH AV MOUNTS®

SYSTEM X™

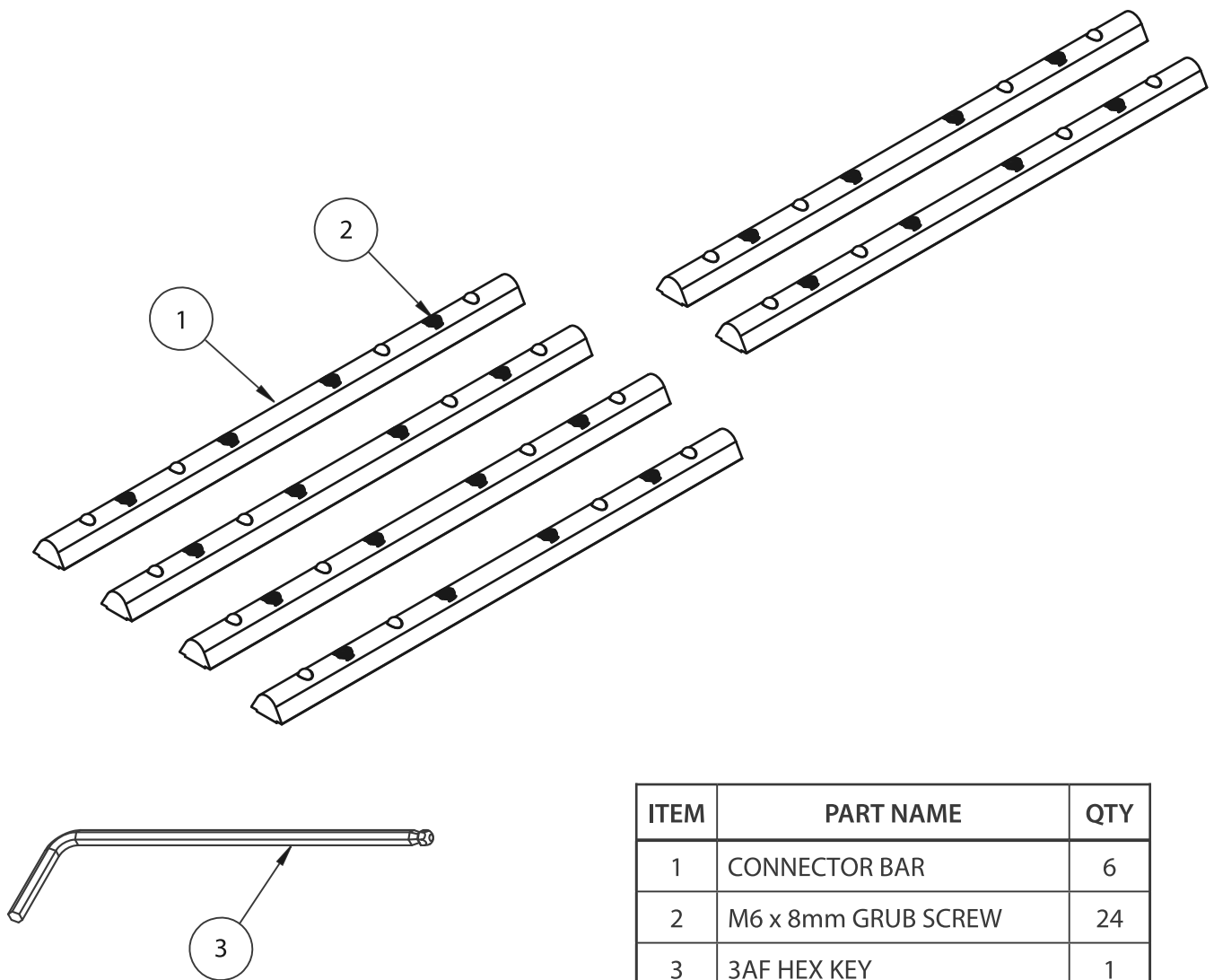
B-TECH AV MOUNTS

# BT8390-EXT

## RAIL EXTENSION KIT



### PARTS LIST

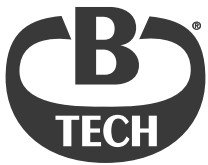


ITEM	PART NAME	QTY
1	CONNECTOR BAR	6
2	M6 x 8mm GRUB SCREW	24
3	3AF HEX KEY	1

Designed to work in conjunction with B-Tech's System X range



[www.btechavmounts.com](http://www.btechavmounts.com)



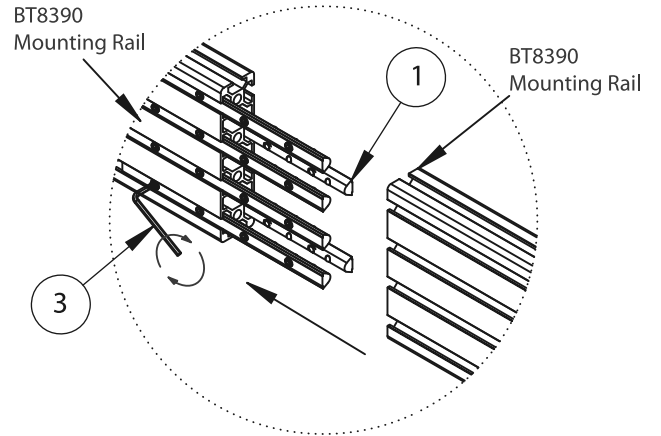
B-TECH AV MOUNTS

# BT8390-EXT

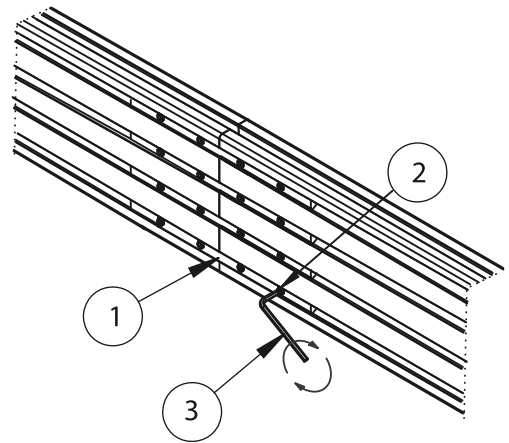
## RAIL EXTENSION KIT

### DESIGNED TO CONNECT TWO BT8390 MOUNTING RAILS TOGETHER

i. Insert halfway 4x *item 1* into the front side of the rail and 2x *item 1* into the back side, tighten *item 2* with *item 3*.

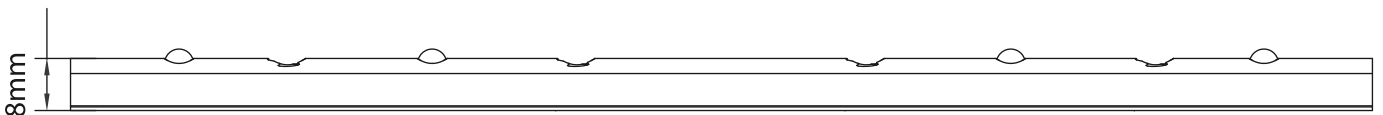


ii. Slide the other rail onto *item 1* and tighten *item 2*.

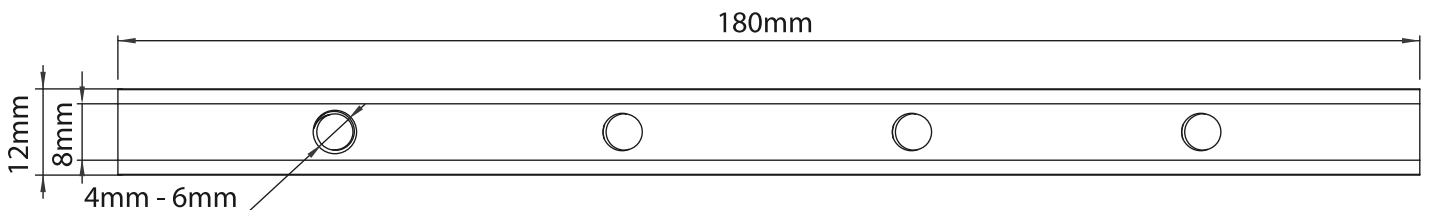


### PRODUCT DIMENSIONS

SIDE VIEW



FRONT VIEW



**CONTACT:**  
[info@btechavmounts.com](mailto:info@btechavmounts.com)

©2021 B-Tech International Design & Manufacturing Ltd. All rights reserved.  
 B-Tech AV Mounts is a division of B-Tech International Design & Manufacturing Ltd.  
 B-Tech AV Mounts and the B-Tech logo are registered trade marks.  
 All other brands and product names are trademarks of their respective owners.  
 Photographs are for illustrative purposes only. E&OE.  
 AMA-BT8390-EXT-V2.1-0921-104 MADE IN VIETNAM

