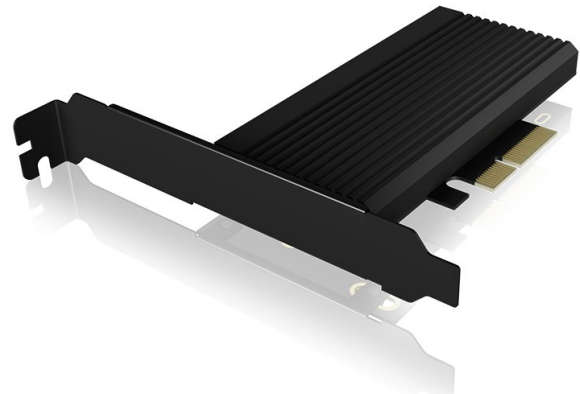


ICY BOX IB-PCI208-HS

PCIe extension card with M.2 M-Key socket for an NVMe SSD

Key features

- M.2 PCIe NVMe to PCIe 4.0 x4
- Data transfer rates of up to 64 Gbit/s
- Supports M.2 22x 30/42/60/80 NVMe SSDs
- Heat sink made of aluminium incl. thermal pads
- Use of double-sided SSDs possible
- Low- and full-profile bracket



Packing content

IB-PCI208-HS, Heat sink, Full-profile bracket, Low-profile bracket
Thick thermal pad (70 mm), Thin thermal pad (70 mm), Screw set
Screwdriver, Manual

Space for performance

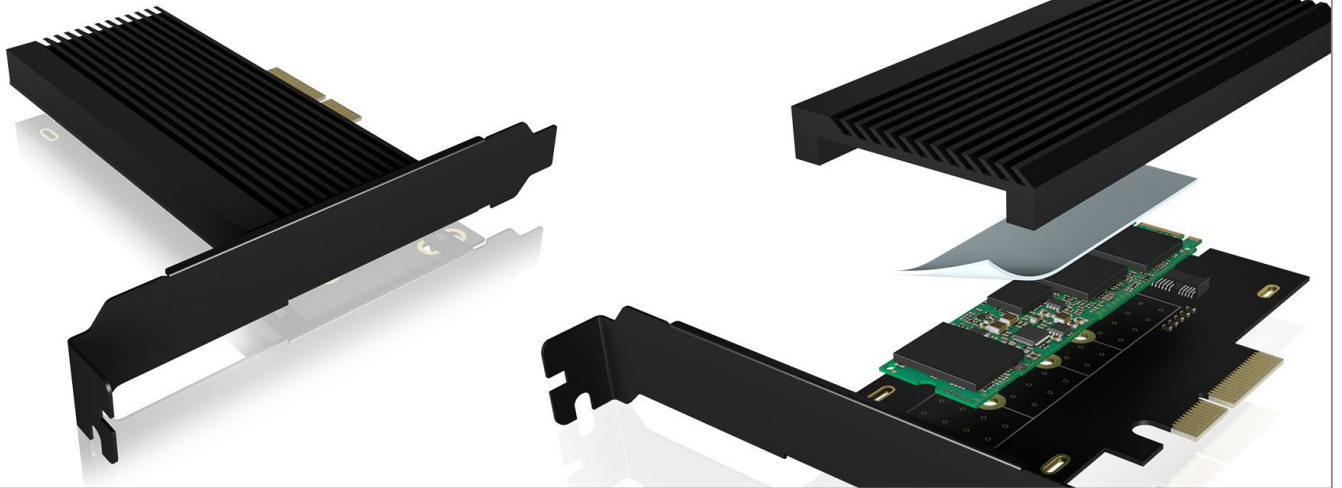
You need free storage space and also want to move your data at a high transfer rate? Then use our PCIe expansion card and place it comfortably and perfectly integrated in a free PCIe slot of your PC! With PCIe 4.0 and up to 64 Gbit/s, your data travels ultra-fast!

Technical data

Model	IB-PCI208-HS
Article no.	60830
EAN code	4250078171669
Brand	ICY BOX
Colour	Black
Material	Aluminium, plastic
Interface to host computer	PCIe x4
Transfer rate	Up to 64 Gbit/s
Socket	M-Key

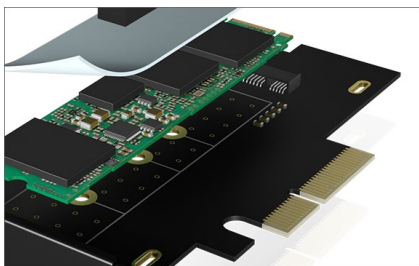
M.2 card size in mm

M.2 interface	22x 30/42/60/80 PCIe (NVMe)
Supported M.2 card keys	M.2 PCIe NVMe
SSD capacity	Up to 2 TB
Cooling	Passive
Power supply	Bus-powered
Operating system	Windows®
System requirements	One free PCIe 4.0 x4 slot on your motherboard Hint: Downwards compatible with PCIe 3.0/2.0



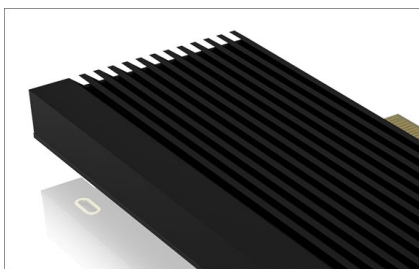
ICY BOX **IB-PCI208-HS**

PCIe extension card with M.2 M-Key socket for an NVMe SSD



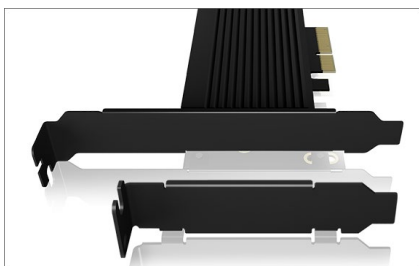
Ignite the data turbo

If you want to give your M.2 SSD the turbo boost, then connect it with the super-fast PCIe 4.0 expansion card! This allows the data to reach transfer speeds of up to 64 Gbit/s - waiting was yesterday!



Always stays cool

Even with the highest demands, your SSD always stays cool. The large, solid aluminium heat sink in the innovative cooling fin design ensures sufficient heat dissipation to keep your SSD running stably and efficiently. In addition, the expansion card comes with thermal pads that are applied to the M.2 SSD.



Quite adaptable

The perfect carrier for your M.2 SSD is called IB-PCI208-HS. In the variants with full or half profile bracket, it integrates perfectly into a free slot of your PC. The inserted M.2 NVMe is to be connected via an M-Key socket.

Logistical data

Packing unit: 40 pcs. / carton
Total weight: 9.4 kg
Gross weight (with packing): 0.212 kg
Net weight: 0.022 kg

Dimension / carton: 500x320x300 mm
Dimension (with packing): 27x155x200 mm
Dimension of article: 128x122x20 mm
Country of origin: China