

## DS-LEDTK Models



# Universal Trim Kit

FOR dvLED VIDEO WALLS 89mm TO 150mm DEEP

Perfect your next dvLED video wall installation by adding the Peerless-AV® Universal Trim Kit. This sleek accessory is designed to cover the unsightly sides of dvLED displays and give the video wall a completely finished appearance. The Trim Kit's universal and depth adjustable design attaches to the wall, allowing it to go all the way around the border of any video wall that is 89mm to 150mm deep. The Trim Kit also comes in multiple size options and can be cut to length in the field, providing a custom fit to the specific video wall being installed. This accessory is lightweight and easy to install, providing installers with a simple solution to create a SEAMLESS dvLED video wall.

- Aesthetically pleasing Trim Kit finishes off the video wall by covering the unsightly sides of the dvLED display
- Trim section options, that are solid and 70% vented, allow you to select the perfect combination for your video wall install\*
- Universal and depth adjustable design attaches to the wall, allowing it to go around any video wall that is 89mm to 150mm deep
- The Trim Kit can be cut to length in the field, allowing it to be stocked and ready for immediate shipment
- Sections measuring 5', 6' and 8' are packaged in easy to handle cardboard tubes

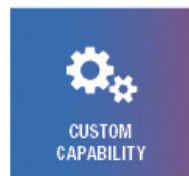
\* Customer is responsible for making sure the ventilation selected is right for their video wall requirements.



DEDICATED DESIGN  
& SUPPORT TEAM



MARKETING  
SUPPORT



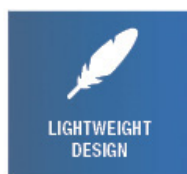
CUSTOM  
CAPABILITY



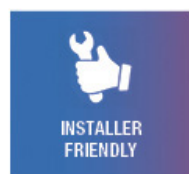
DEDICATED LED  
MOUNTING SOLUTIONS



PRECISION  
ENGINEERING



LIGHTWEIGHT  
DESIGN



INSTALLER  
FRIENDLY



CERTIFIED  
TRAINING



Visit [Peerless-AV.com/SEAMLESS](https://Peerless-AV.com/SEAMLESS)  
to get your project started!

**Product Specifications**

	DIMENSIONS (W x H x D)	PRODUCT WEIGHT	FINISH	AVAILABLE COLORS
DS-LEDTK-C	Corner: 1.5" x 2.9" x 2.9" (38 x 74 x 74mm)	Corner: 4.0lb (1.8kg)	Powder Coat	Magic Black II
DS-LEDTK-5S	5' Solid: 1.5" x 3.5-5.9" x 60" (38 x 89-150 x 1524mm)	5' Solid: 7.3lb (3.3kg)		
DS-LEDTK-6S	6' Solid: 1.5" x 3.5-5.9" x 72" (38 x 89-150 x 1829mm)	6' Solid: 8.7lb (4.0kg)		
DS-LEDTK-8S	8' Solid: 1.5" x 3.5-5.9" x 96" (38 x 89-150 x 2438mm)	8' Solid: 11.6lb (5.3kg)		
DS-LEDTK-5V	5' Vented: 1.5" x 3.5-5.9" x 60" (38 x 89-150 x 1524mm)	5' Vented: 5.8lb (2.6kg)		
DS-LEDTK-6V	6' Vented: 1.5" x 3.5-5.9" x 72" (38 x 89-150 x 1829mm)	6' Vented: 6.2lb (2.8kg)		
DS-LEDTK-8V	8' Vented: 1.5" x 3.5-5.9" x 96" (38 x 89-150 x 2438mm)	8' Vented: 7.7lb (3.5kg)		

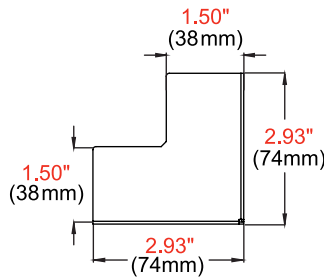
**Package Specifications**

	PACKAGE SIZE (Cardboard Tube)	PACKAGE SHIP WEIGHT	PACKAGE UPC CODE	PACKAGE CONTENTS	UNITS IN PACKAGE
DS-LEDTK-C	Corner: 5.25" x 20.0" (133 x 508mm)	Corner: 5.0lb (2.3kg)	735029338888	Trim and Corner Kit	1 Kit
DS-LEDTK-5S	5' Solid: 5.25" x 63.5" (133 x 1612mm)	5' Solid: 8.7lb (4.0kg)	735029338802		
DS-LEDTK-6S	6' Solid: 5.25" x 75.5" (133 x 1917mm)	6' Solid: 10.8lb (4.9kg)	735029338826		
DS-LEDTK-8S	8' Solid: 5.25" x 99.5" (133 x 2527mm)	8' Solid: 14.5lb (6.6kg)	735029338833		
DS-LEDTK-5V	5' Vented: 5.25" x 81.5" (133 x 2070mm)	5' Vented: 8.0lb (3.6kg)	735029338819		
DS-LEDTK-6V	6' Vented: 5.25" x 85.0" (133 x 2159mm)	6' Vented: 8.4lb (3.8kg)	735029338864		
DS-LEDTK-8V	8' Vented: 5.25" x 113.0" (133 x 2870mm)	8' Vented: 11.5lb (5.2kg)	735029338871		

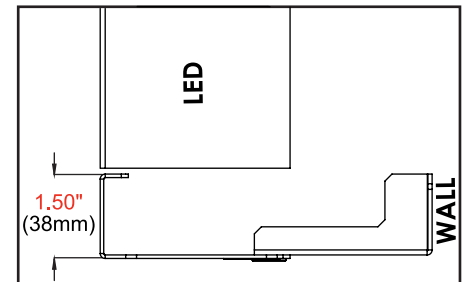
All dimensions = inch (mm)

DIMENSION "A"	DIMENSION "B"
5 ft	3.5" - 5.9"
6 ft	
8 ft	

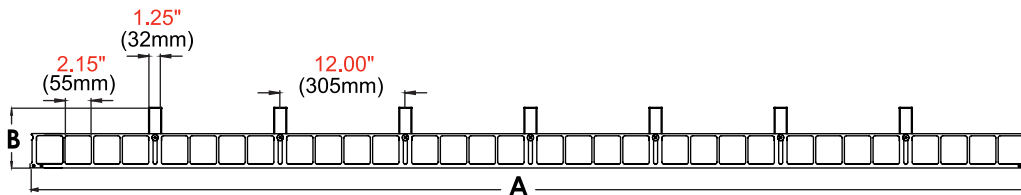
DIMENSION "A"	DIMENSION "B"
1524mm	89 - 150mm
1829mm	
2438mm	



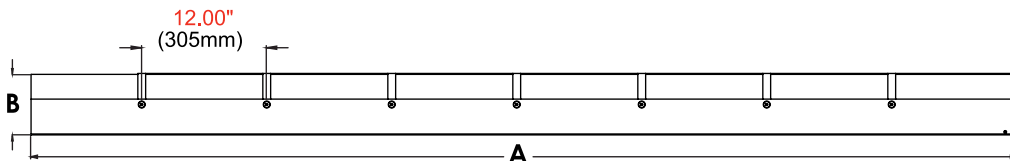
**CORNER CAPS**



**DETAIL**



**VENTED TOP VIEW**



**SOLID TOP VIEW**

**Architect Specifications**

The Universal Trim Kit shall be a Peerless-AV model DS-LEDTK Models and shall be located where indicated on the plans. Assembly and installation shall be done according to instructions provided by the manufacturer.

Visit [peerless-av.com](http://peerless-av.com) to see the complete line of AV solutions from Peerless-AV, including outdoor displays, kiosks, digital audio, display mounts, projector mounts, carts/stands, and a full assortment of accessories.

**Peerless-AV**  
 2300 White Oak Circle  
 Aurora, IL 60502 USA  
**(800) 865-2112**  
**(630) 375-5100**  
**Fax: (800) 359-6500**

**Peerless-AV EMEA**  
 Unit 3 Watford Interchange  
 Colonial Way, Watford  
 Herts, WD24 4WP  
 United Kingdom  
**+44 (0) 1923 200100**  
**Fax: +44 (0) 1923 200101**

**Peerless-AV Latin America**  
 Av. de las Industrias 413  
 Parque Industrial Escobedo  
 General Escobedo, N.L.,  
 México, 66062  
**+52 (81) 8384-8300**  
**Fax: +52 (81) 8384-8360**

