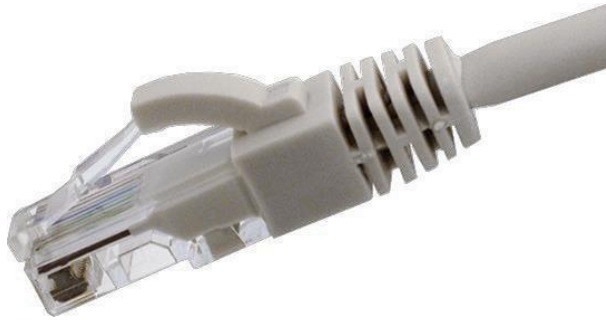


FEATURES:



- Category 5e Network Patch Lead
- Individually Bagged
- Flush Moulded Strain Relief Snagless Boot
- Stranded Copper 24 AWG
- Available in 10 different colours
- Constructed with RJ45 plugs
- 10/100/1000 Base-T Gigabit Ethernet

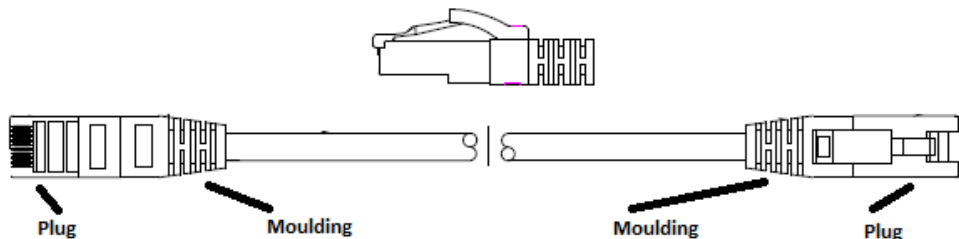
DESCRIPTION:

Cablenet LSOH Category 5e U/UTP cables are manufactured, tested and verified to the ISO11801 Class D+ and ANSI/EIA/TIA standards for enhanced performance. They are constructed with RJ45 plugs and high quality Stranded Cat5e LSOH cable. These are available in 9 different lengths and manufactured in 10 colours.

SPECIFICATIONS

Conductor – Stranded Copper 7/0.2 24 AWG
 Jacket – LSOH IEC 60332-3

TECHNICAL DRAWING



ORDERING INFORMATION

	PINK RAL 4003	GREY RAL 7047	RED RAL 3018	GREEN PANTONE 7482C	BLUE PANTONE 7468C	YELLOW RAL 1018	BLACK RAL 9011	VIOLET PANTONE 7679C	WHITE RAL 9003	ORANGE RAL 2012
0.5M	L67-0005	L67-1005	L67-2005	L67-3005	L67-4005	L67-5005	L67-6005	L67-7005	L67-8005	L67-9005
1M	L67-0010	L67-1010	L67-2010	L67-3010	L67-4010	L67-5010	L67-6010	L67-7010	L67-8010	L67-9010
1.5M								L67-7015		
2M	L67-0020	L67-1020	L67-2020	L67-3020	L67-4020	L67-5020	L67-6020	L67-7020	L67-8020	L67-9020
2.5M		L67-1025	L67-2025	L67-3025	L67-4025	L67-5025				
3M	L67-0030	L67-1030	L67-2030	L67-3030	L67-4030	L67-5030	L67-6030	L67-7030	L67-8030	L67-9030
4M	L67-0040	L67-1040	L67-2040	L67-3040	L67-4040	L67-5040	L67-6040	L67-7040	L67-8040	L67-9040
5M	L67-0050	L67-1050	L67-2050	L67-3050	L67-4050	L67-5050	L67-6050	L67-7050	L67-8050	L67-9050
8M	L67-0080	L67-1080	L67-2080	L67-3080	L67-4080	L67-5080	L67-6080	L67-7080	L67-8080	L67-9080
10M	L67-0100	L67-1100	L67-2100	L67-3100	L67-4100	L67-5100	L67-6100	L67-7100	L67-8100	L67-9100