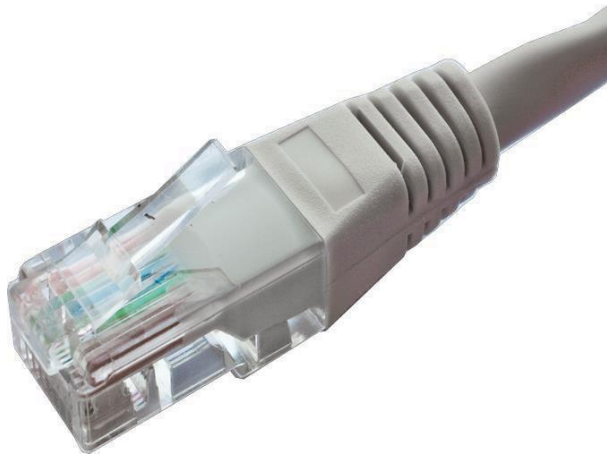


### FEATURES:



- Category 5e Network Patch Lead
- Individually Bagged
- Flush Moulded Strain Relief Boot
- Stranded Copper 24 AWG
- Available in 11 different colours
- Constructed with RJ45 plugs
- 10/100/1000 Base-T Gigabit Ethernet

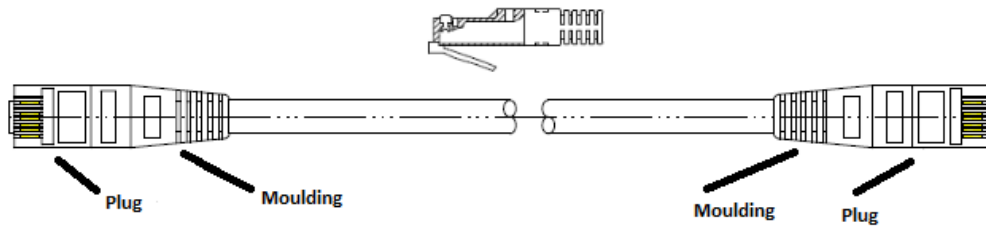
### DESCRIPTION:

Cablenet PVC Category 5e U/UTP cables are manufactured, tested and verified to the ISO11801 Class D+ and ANSI/EIA/TIA standards for enhanced performance. They are constructed with RJ45 plugs and quality UL approved Stranded Cat5e cable. These are available in 16 different lengths and manufactured in 11 colours.

### SPECIFICATIONS

Conductor – Stranded Copper 7/0.2 24 AWG  
Jacket – PVC Jacket

### TECHNICAL DRAWING



### ORDERING INFORMATION

	Pink RAL 4003	Grey RAL 7044	Red RAL 3031	Green RAL 6016	Blue RAL 5012	Yellow RAL 1023	Black RAL 9011	Violet RAL 4005	White RAL 9003	Orange RAL 2000	Brown RAL 8023
0.25M							67-6002				
0.3M	67-0003	67-1003	67-2003	67-3003	67-4003	67-5003	67-6003	67-7003	67-8003	67-9003	
0.5M	67-0005	67-1005	67-2005	67-3005	67-4005	67-5005	67-6005	67-7005	67-8005	67-9005	867-0005
1M	67-0010	67-1010	67-2010	67-3010	67-4010	67-5010	67-6010	67-7010	67-8010	67-9010	867-0010
1.5M	67-0015	67-1015	67-2015	67-3015	67-4015	67-5015	67-6015	67-7015	67-8015	67-9015	867-0015
2M	67-0020	67-1020	67-2020	67-3020	67-4020	67-5020	67-6020	67-7020	67-8020	67-9020	867-0020
2.5M		67-1025	67-2025	67-3025	67-4025	67-5025					
3M	67-0030	67-1030	67-2030	67-3030	67-4030	67-5030	67-6030	67-7030	67-8030	67-9030	867-0030
4M	67-0040	67-1040	67-2040	67-3040	67-4040	67-5040	67-6040	67-7040	67-8040	67-9040	
5M	67-0050	67-1050	67-2050	67-3050	67-4050	67-5050	67-6050	67-7050	67-8050	67-9050	867-0050
6M	67-0060	67-1060	67-2060	67-3060	67-4060	67-5060	67-6060	67-7060	67-8060	67-9060	
7M	67-0070	67-1070	67-2070	67-3070	67-4070	67-5070	67-6070	67-7070	67-8070	67-9070	
8M	67-0075	67-1075	67-2075	67-3075	67-4075	67-5075	67-6075	67-7075	67-8075	67-9075	
10M	67-0100	67-1100	67-2100	67-3100	67-4100	67-5100	67-6100	67-7100	67-8100	67-9100	867-0100
15M	67-0150	67-1150	67-2150	67-3150	67-4150	67-5150	67-6150	67-7150	67-8150	67-9150	
20M	67-0200	67-1200	67-2200	67-3200	67-4200	67-5200	67-6200	67-7200	67-8200	67-9200	867-0200
25M		67-1250									
30M	67-0300	67-1300	67-2300	67-3300	67-4300	67-5300	67-6300	67-7300	67-8300	67-9300	867-0300