

TOR SERIES

TILT OUT WALL RACK

Ideal for small sound systems, paging and patching applications in schools, hotels, offices or anywhere a secure, low-profile wall mount solutions is required.

FEATURES

- Convenient design allows easy access to equipment controls
- Two models available: surface mount or flush between studs
- Tamper resistant design ideal for use in non-secure areas
- Front rackrail is adjustable from 1-1/2" to 3-1/2" from top to accommodate handles and knobs
- Mount non-rackmount equipment using included clamp bars
- Engineered to provide effective passive thermal management
- Includes removable panel to accommodate Middle Atlantic Products UCP series universal connector panels, mounts BNC, XLR and other popular connectors
- Knockout provided in back box for cable pass-through
- Knockouts on face of rack accept Decora® style low-voltage switches or devices
- Abundant cable management tie points integrated throughout enclosure
- Includes electrical box for high-voltage connections
- Available in 2, 3, or 4 rackspaces
- Up to 20" useable depth with a 100 lb. weight capacity
- UL Listed in the US and Canada



TOR Series
(open in operation position)

TOR SERIES TILT OUT WALL RACK

SPECIFICATIONS

EIA/TIA compliant 19" tilt out wall rack shall be Middle Atlantic Products model #TOR-X-20XX (refer to chart). Overall dimensions shall be 24.5" W x 30.2" H x XX" D (refer to chart). TOR rack shall be constructed of 18-gauge steel, ears and fascia shall be constructed of 16-gauge steel. TOR shall have a weight capacity of 100 lbs. Rackrail shall be constructed of 11-gauge marked rackspaces. TOR-(3/4)-20 SP/RP shall include 4" x 4" electrical box, TOR-2-20 SP/RP shall include 4" x 2-1/8" electrical box. TOR Series shall include two Decora R style knockouts at top face of rack. Cable management features shall include a 8.5" X 8.5" cable pass-through on backpan, abundant cable tie points and electrical cable duct knockouts on top, bottom for electrical connections. TOR shall pivot X degrees with positive stop for unit operation and 105 degrees with positive stop for servicing (refer to chart). TOR shall be UL Listed in the US and Canada. TOR shall be GREENGUARD Gold Certified. EU compliant. TOR shall be manufactured by an ISO 9001 and ISO 14001 registered company. TOR shall be warrantied to be free from defects in material or workmanship under normal use and conditions for the lifetime of the product.



(closed position)



(open in service position)

OPTIONS

Partial recess trim kit for mounting between 2 x 4 or 2 x 6 studs (refer to chart) shall be Middle Atlantic Products model #TOR-PRT.

EIA/TIA COMPLIANT



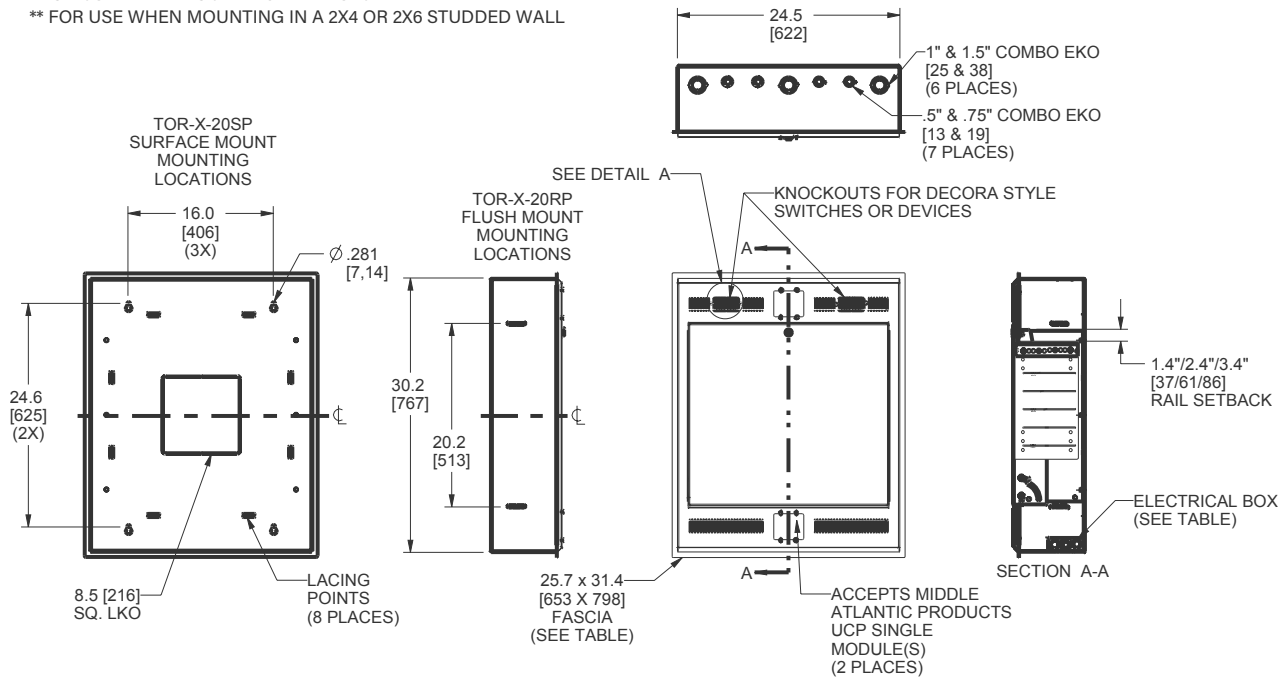
PRODUCT CERTIFIED FOR
LOW CHEMICAL EMISSIONS
UL.COM/GG
UL 2818

TOR SERIES TILT OUT WALL RACK

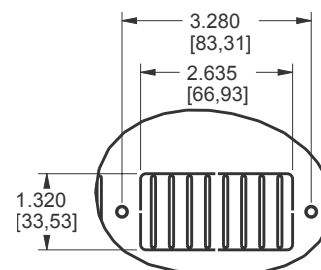
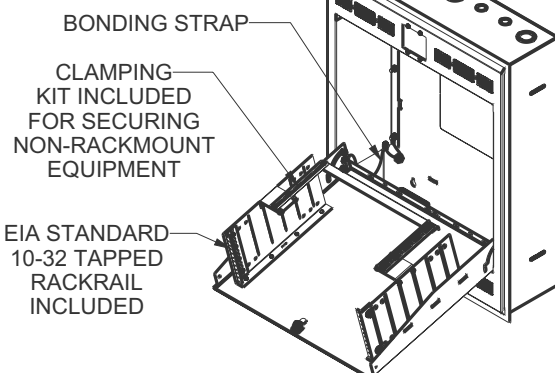
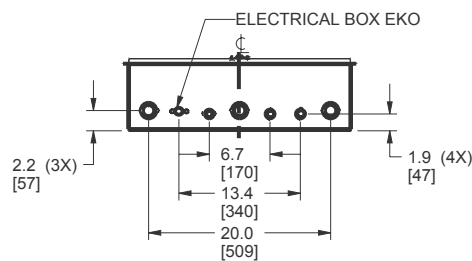
BASIC DIMENSIONS

NOTE(S):

1. DIMENSIONS SHOWN IN FORMAT: INCHES [MM]
2. * FOR USE WHEN MOUNTING IN 2X4 STUDDED WALL
** FOR USE WHEN MOUNTING IN A 2X4 OR 2X6 STUDDED WALL



DETAIL A
LKO FOR DECORA DETAIL
2 PLACES
SCALE 51/128

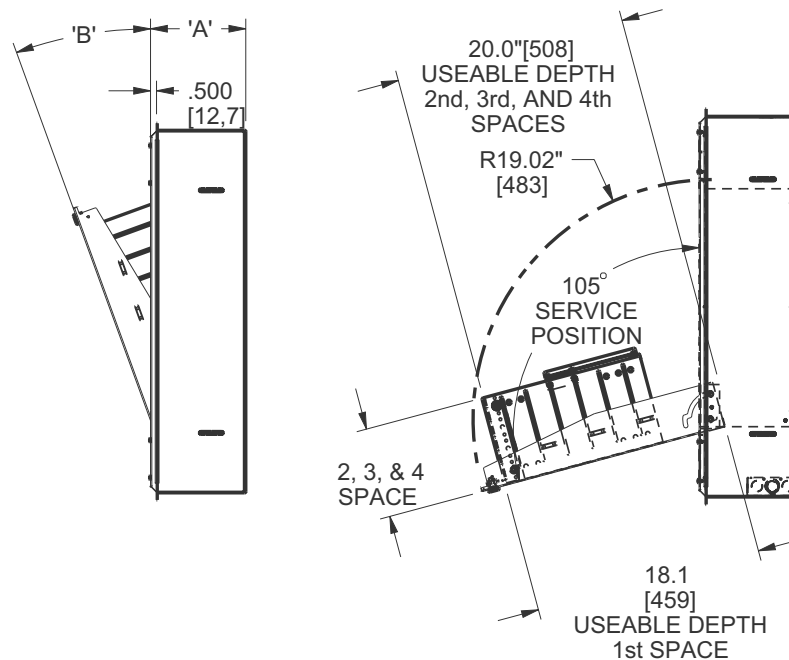


TOR SERIES TILT OUT WALL RACK

BASIC DIMENSIONS

NOTE(S):

1. DIMENSIONS SHOWN IN FORMAT: INCHES [MM]
2. * FOR USE WHEN MOUNTING IN 2X4 STUDDED WALL
- ** FOR USE WHEN MOUNTING IN A 2X4 OR 2X6 STUDDED WALL



PART #	OVERALL DEPTH 'A'	OPERATING POSITION 'B'	ROUGH OPENING	RECOMENDED STUD SIZE FOR FLUSH MOUNT	FASCIA	ELECTRICAL BOX	OPTIONAL PARTIAL RECESS FASCIA
TOR-2-20RP	4.44" [113]	12°	24.75" X 30.31" [629 X 770]	2" X 4"	INCLUDED	4" X 2 1/8"	--
TOR-3-20RP	6.19" [157]	18°	24.75" X 30.31" [629 X 770]	2" X 6"	INCLUDED	4" SQUARE	TOR-PRT*
TOR-4-20RP	7.94" [202]	20°	24.75" X 30.31" [629 X 770]	2" X 8"	INCLUDED	4" SQUARE	TOR-PRT**
TOR-2-20SP	4.38" [111]	12°	--	--	--	4" X 2 1/8"	--
TOR-3-20SP	6.13" [156]	18°	--	--	--	4" SQUARE	--
TOR-4-20SP	7.88" [200]	20°	--	--	--	4" SQUARE	--

LEGRAND | AV COMMERCIAL BRANDS

C2G | Chief | Da-Lite | Luxul | Middle Atlantic | Vaddio | Wiremold

WHAT GREAT SYSTEMS ARE BUILT ON™ | legrandav.com

USA 866.977.3901 av.middleatlantic.support@legrand.com CANADA 877.345.4329 av.middleatlantic.canada@legrand.com

EMEA +31 495 580 840 av.emea.sales@legrand.com APAC +852 2145 4099 av.asia.sales@legrand.com