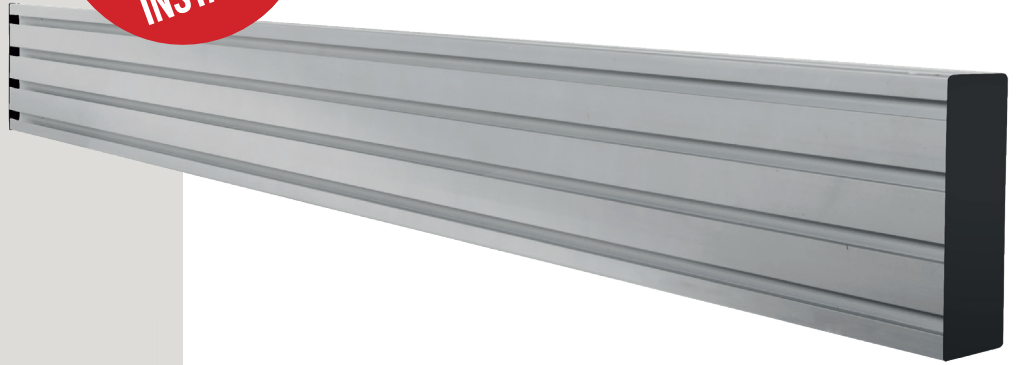




JOIN RAILS  
TOGETHER  
FOR LONGER  
INSTALLS



# BT8390

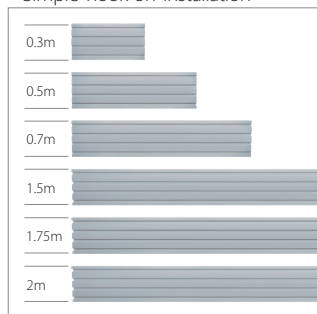
## HORIZONTAL MOUNTING RAIL

BT8390 horizontal mounting rails are the central component of any System X installation, whether it be for a complex multi-screen install or a single screen application. Made from aluminium, the rail itself is sturdy yet lightweight and is designed to support a variety of interface arms and mounts, allowing screens and other AV equipment to be fitted to the rail. Available in a range of lengths, the BT8390 can be mounted onto walls, poles, System X and Mode AL columns using a range of different fixing kits (available separately). Rails can be cut to shorter lengths as required or joined together using extension kits (also available separately) for much longer installs.

SPECIFICATION	
Max load	Dependent on interface arms used
Lengths available	0.3m, 0.5m, 0.7m, 1.5m, 1.75m, 2m
Fixing kit to wall mount	BT8390-WFK1 / 2 / 3 / 4 / 5
Fixing kit to pole mount	BT8390-CFK ( <i>accessory collar required</i> )
Fixing kit to mount to a BT8390 column	BT8380-JPK
Fixing kit to mount to a BT8385 column	BT8385-RTC
Colour	Silver or Black

### FEATURES

- Part of the System X range for use in a variety of applications; wall, ceiling, trolley etc.
- Ideal for video walls, menu boards and other multi-screen installations
- Can also be used for premium single screen applications
- Compatible with a variety of interface arms and collar compatible accessory mounts
- Also compatible with Mode-AL BT8385 columns
- Suitable for landscape or portrait installs
- High-end aesthetic quality
- Available in a variety of lengths and can be cut if necessary
- Multiple lengths can be joined together using BT8390-EXT to create longer rails
- Lateral adjustment - position interface arms anywhere along the length of the rail
- Supplied with plastic end caps for a neat and tidy finish
- Simple 'hook-on' installation



Available in a variety of lengths and can be cut if necessary



Multiple lengths can be joined together using **BT8390-EXT** (available separately)



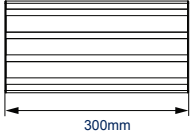
Compatible with a variety of interface arms and collar compatible accessory mounts



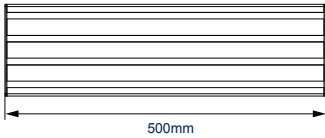
Use **BT8390-CFK** collar fixing kits and B-Tech collars & poles to create ceiling or floor-to-ceiling installs

## TECHNICAL DRAWINGS

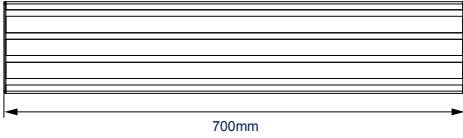
BT8390-030



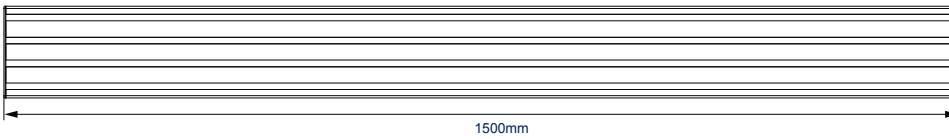
BT8390-050



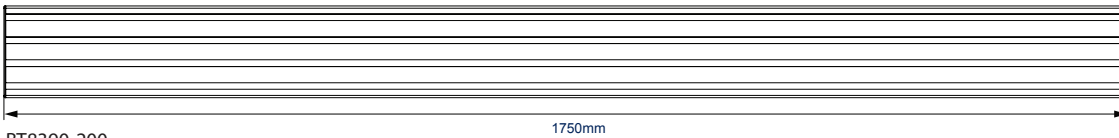
BT8390-070



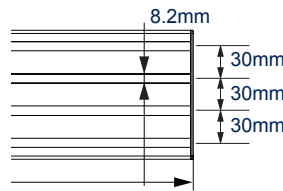
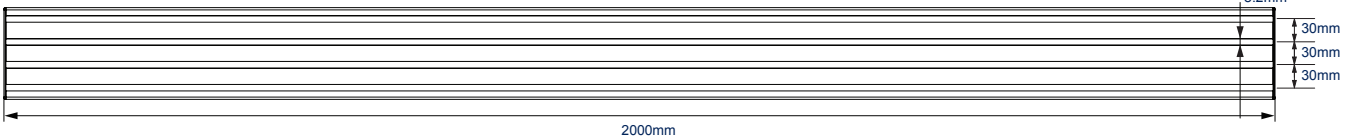
BT8390-150



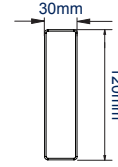
BT8390-175



BT8390-200



DISTANCE BETWEEN SLOTS



END CAP



B-TECH AV MOUNTS



## PACKING INFORMATION

COLOUR:	ORDER REF:	EAN CODE:	MASTER CARTON QTY:	INNER CARTON QTY:	MASTER CARTON WEIGHT:	MASTER CARTON CUBE:
Silver	BT8390-030/S	5019318501753	1	0	3kg	0.007cbm
Black	BT8390-030/B	5019318301049	1	0	3kg	0.007cbm
Silver	BT8390-050/S	5019318301032	1	0	3.5kg	0.010cbm
Black	BT8390-050/B	5019318501593	1	0	3.5kg	0.010cbm
Silver	BT8390-070/S	5019318501128	1	0	4kg	0.016cbm
Black	BT8390-070/B	5019318501111	1	0	4kg	0.016cbm
Silver	BT8390-150/S	5019318501142	1	0	6kg	0.033cbm
Black	BT8390-150/B	5019318501135	1	0	6kg	0.033cbm
Silver	BT8390-175/S	5019318501166	1	0	7kg	0.038cbm
Black	BT8390-175/B	5019318501157	1	0	7kg	0.038cbm
Silver	BT8390-200/S	5019318501180	1	0	8kg	0.043cbm
Black	BT8390-200/B	5019318501173	1	0	8kg	0.043cbm

## ACCESSORIES AND RELATED PRODUCTS

BT8390-JPK



Joining Plate Kit for fixing mounting rails to System X vertical columns (BT8380)

BT8390-WFK1, 2, 3 & 4 & 5



Wall Fixing Kits for fixing mounting rails to walls

BT8390-CFK



Collar Fixing Kit for fixing mounting rails to B-Tech poles (accessory collar also required)

BT8385-RTC



Rail-To-Column Mounting Kit for fixing mounting rails to Mode-AL columns (BT8385)

© 2018 B-Tech Av Mounts. All rights reserved. The information in this specification is subject to change without notice. B-Tech Av Mounts is a registered trademark of B-Tech Av Mounts. All other trademarks are the property of their respective owners. B-Tech Av Mounts is not responsible for any damage caused by improper or unauthorized use of its products. Any reproduction or transmission of any part of this specification is strictly prohibited unless prior written permission has been granted by B-Tech Av Mounts.

SS-V2-BT8390-300421



B-TECH PROFESSIONAL



For More Information Visit [www.btechavmounts.com](http://www.btechavmounts.com)