

# **WASTE MANAGEMENT**

## CONTAINERS FOR WASTE & RECYCLABLES





## Waste and recycling management for trade, industry and offices. What you can expect of us.

Many millions of tons of waste are produced every year: in trade, industry and every work place. However there are different types of waste. These days, almost everything can be utilised and returned to the economic cycle, provided that the various types of waste are collected and sorted carefully. For industry and commerce, separate waste disposal as stipulated by the Commercial Wastes Ordinance has proved effective. Waste is collected and separated into categories such as paper, glass... etc, complying with relevant national and international regulations.

Correctly applied, this practice makes sense not only ecologically, but also economically. For in most cases companies gain enormous cost advantages by sustainable resource management, in addition to protecting the environment. In this way, the waste produced is turned into genuine recyclables, for which the recycling industry provides an attractive market. In order to develop this market for yourself, intelligent concepts are needed for corporate waste sorting as well as suitable storage and safe transport of the sorted waste. These recyclables, which can be sold at a profit, will reduce the amount of residual waste and consequently the cost of its removal.

The key to implementing a future-oriented waste management system is the organisation of waste collection according to the principle of waste sorting. Here, DURABLE supports you in organising corporate collection points by offering various functional collection containers for waste and recyclables.

Moreover, high-quality containers have been developed for many other areas of application. In particular, they are ideally suited for reliable transport or dry storage of materials in commerce and industry. They come in an assortment of colours for easy location, are easy to handle and provide space-saving storage.

In corporate offices or home offices, where large quantities of waste paper normally accumulate, the extensive range of waste paper baskets and bins from DURABLE offers genuine "winners". A great variety of materials such as high-quality plastics or sheet steel in attractive designs and colours blend in harmoniously with any type of surrounding.

Our GS-certified waste paper baskets made of sheet steel, with fire extinguishing lids, and our products for safe disposal of cigarette waste are ideal solutions for all public areas with high visitor frequency. Finally, the extensive range of intelligent product ideas from DURABLE is rounded off by plastic buckets for the professional cleaning sector, and shopping baskets.

### CONTENTS

<b>Overview</b>	<b>Page 4–5</b>
<b>BUSINESS AND INDUSTRIAL</b>	<b>Page 6–13</b>
Waste collection and sorting	Page 8–9
Storage and transport	Page 10–11
Products for Business and Industrial	Page 12–13
<b>BUSINESS MANAGEMENT AND HOME OFFICE</b>	<b>Page 16–19</b>
Products for Business Management and Home Office	Page 18–19
<b>PUBLIC AND BUSINESS AREAS</b>	<b>Page 20–23</b>
Products for Public and Business Areas	Page 22–23
<b>TRADE AND COMMERCE</b>	<b>Page 24–26</b>
Products for Trade and Commerce	Page 26

# THE PRODUCTS

## BUSINESS AND INDUSTRIAL



**DURABIN  
ROUND 40**

PAGE 12



**DURABIN  
LID ROUND 40**

PAGE 12



**DURABIN  
SQUARE 40**

PAGE 8, 10, 12



**DURABIN  
LID SQUARE 40**

PAGE 10, 12



**DURABIN  
FLIP LID SQUARE 40**

PAGE 8, 12



**DURABIN  
SQUARE TROLLEY  
DUO 40**

PAGE 10, 12



**DURABIN  
60**

PAGE 9, 11, 14

## BUSINESS MANAGEMENT AND HOME OFFICE



**WASTE BASKET  
TREND**

PAGE 16, 18



**WASTE BASKET  
OPTIMO**

PAGE 16, 18



**WASTE BASKET  
BASIC**

PAGE 16, 18



**WASTE BASKET  
ECONOMY**

PAGE 18



**DURABIN  
MINI**

PAGE 17, 18



**WASTE BASKET METAL  
ROUND 15 D**

PAGE 19



**WASTE BASKET METAL  
ROUND 15**

PAGE 17, 19

## PUBLIC AND BUSINESS AREAS



**UMBRELLA STAND  
STAINLESS STEEL  
ROUND 28,5**

PAGE 21, 22



**WASTE BASKET  
CORNER 16/P 30**

PAGE 22



**WASTE BASKET  
CORNER 16/P 165**

PAGE 21, 22



**WASTE BASKET  
SEMI-CIRCLE 20/P 30**

PAGE 22



**WASTE BASKET  
SEMI-CIRCLE 20/P 165**

PAGE 21, 22



**WASTE BASKET  
SAFE+ ROUND 15**

PAGE 22



**WASTE BASKET  
SAFE+ ROUND 30**

PAGE 20, 22



**ASHTRAY WALL  
MOUNTED METAL 2,5**

PAGE 21, 23



**ASHTRAY WALL  
MOUNTED METAL 4**

PAGE 23



**ASHTRAY WALL  
STAINLESS STEEL 4**

PAGE 23



**ASHTRAY  
KULAN**

PAGE 23



**DURABIN  
LID 60**

PAGE 9, 11, 15



**DURABIN  
TROLLEY 60**

PAGE 9, 15



**DURABIN  
TROLLEY DUO 60**

PAGE 11, 15



**DURABIN  
90**

PAGE 9, 11, 13



**DURABIN  
LID 90**

PAGE 9, 11, 13



**DURABIN  
TROLLEY 90**

PAGE 9, 13



**DURABIN  
TROLLEY DUO 90**

PAGE 13



**WASTE BASKET METAL  
ROUND 15/P 30**

PAGE 19



**WASTE BASKET  
STAINLESS STEEL  
ROUND 15/P 165**

PAGE 17, 19



**WASTE BASKET  
METAL ROUND 30**

PAGE 17, 19



**WASTE BASKET  
METAL  
SQUARE 18,5**

PAGE 19



**WASTE BASKET  
METAL  
SQUARE 18,5/P 30**

PAGE 19



**WASTE BASKET  
METAL  
SQUARE 18,5/P 165**

PAGE 17, 19



**WASTE BASKET  
SAFE+ ROUND 60**

PAGE 22



**WASTE BASKET  
STAINLESS STEEL  
SAFE ROUND 15**

PAGE 22



**WASTE BASKET  
SAFE ROUND 30**

PAGE 22



**WASTE BASKET  
SAFE ROUND 60**

PAGE 22



**WASTE BASKET  
STAINLESS STEEL WITH  
ASHTRAY ROUND**

PAGE 21, 23



**WASTE BASKET  
METAL WITH SQUARE  
ASHTRAY**

PAGE 21, 23



**WASTE BASKET  
SAFE WITH ASHTRAY  
ROUND**

PAGE 23

**TRADE AND COMMERCE**



**BUCKET  
9,5**

PAGE 24, 26



**BUCKET  
14**

PAGE 24, 26



**BUCKET  
28**

PAGE 24, 26



**SHOPPING BASKET  
19**

PAGE 25, 26



**TROLLEY  
SHOPPING BASKET  
19**

PAGE 25, 26



**SHOPPING BASKET  
27**

PAGE 25, 26



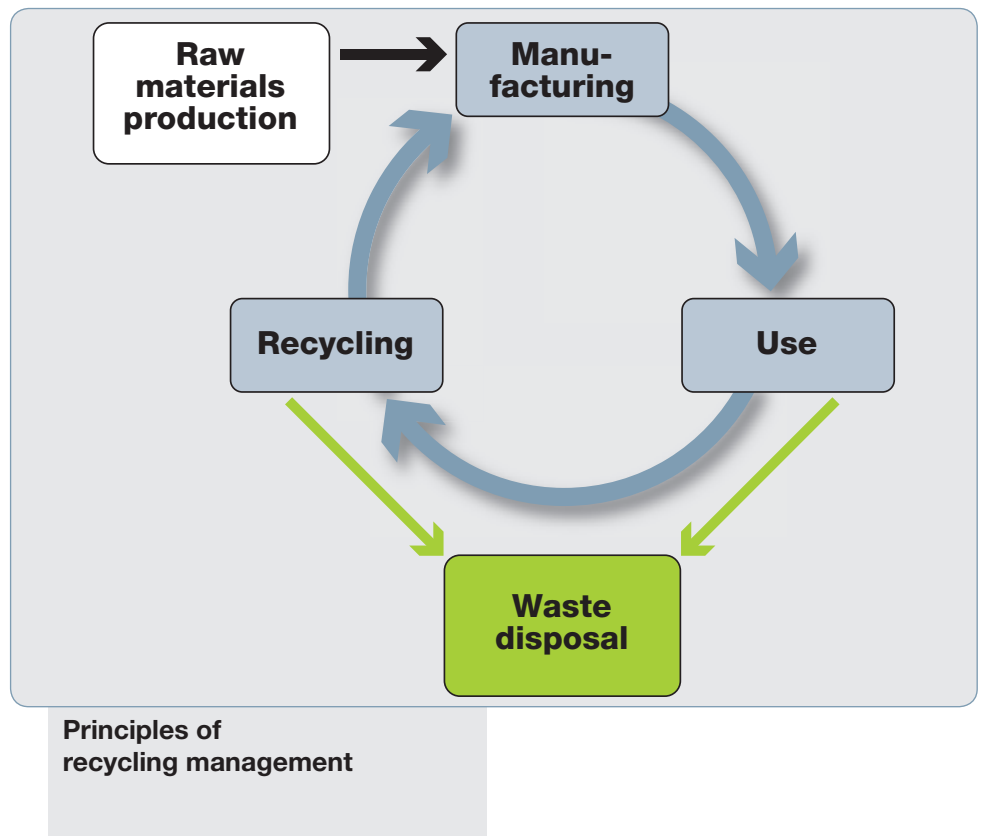
**TROLLEY  
SHOPPING BASKET  
27**

PAGE 26

## FOLLOWING NATURES EXAMPLE TURNING WASTE INTO RECYCLABLES.

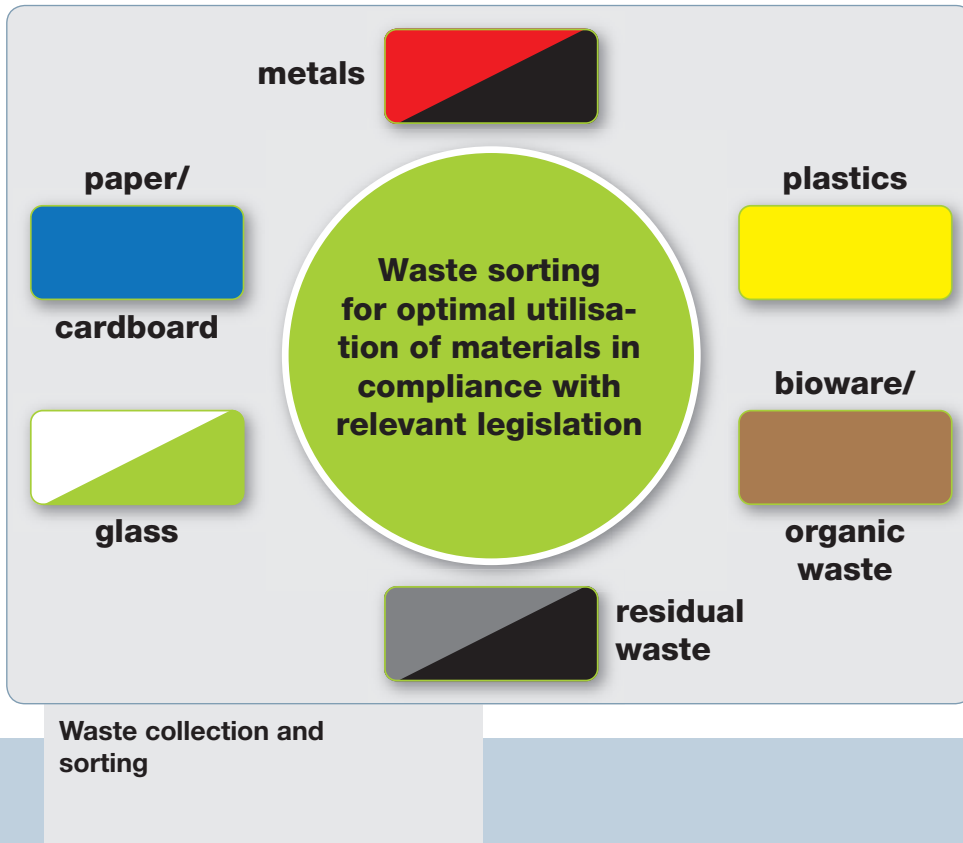
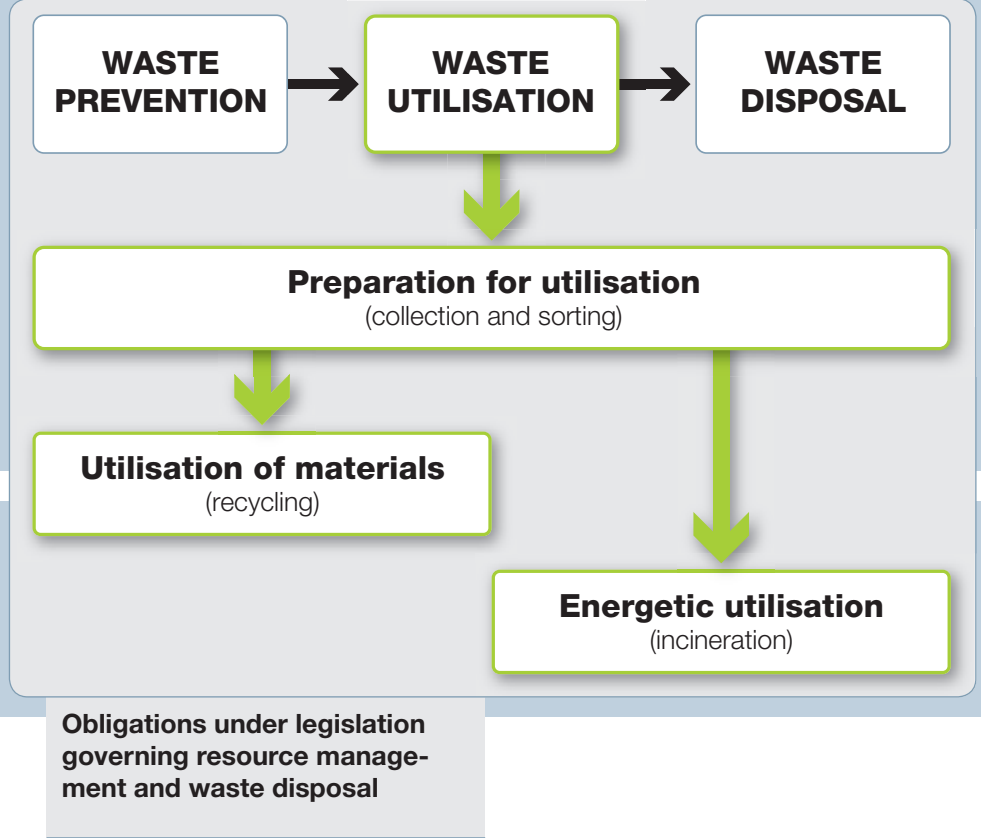
Success in meeting the challenges of the future means acting here and now. The continuous growth in the world's population causes a rising demand for goods. A rising demand for goods leads to higher productivity of the economy. Higher productivity invariably produces more and more waste and scrap materials—while our natural resources become scarcer and scarcer.

Intelligent concepts which offer higher productivity and simultaneously minimise the exploitation of natural resources and the production of waste are the solution to this dilemma.



Here, the cycle principle of our economy is modelled on the cycle of substances in nature, in an attempt to reuse recycled materials as long as possible and in a way that is ecologically and socially sound.

To implement this principle, a number of laws and regulations have been passed by various authorities to regulate the substance cycle management of products from manufacturing to recycling of the residual material. The top priorities are efficient production processes to avoid waste and products with a long service life.



The second highest priority concerns recycling of residual materials in accordance with the Commercial Wastes Ordinance. Here, the essential prerequisite for recycling is the collection and sorting of waste according to recyclable waste categories (fractions). Once the waste fractions have been collected separately, they are either immediately returned to the production process for direct reuse—for example paper and glass—or returned to the substance cycle as secondary raw materials following sorting and further processing in waste treatment plants.

Residual materials that cannot be recycled economically but possess sufficient calorific value can be exploited energetically as incinerator fuels to generate process heat. This firstly reduces the consumption of primary energy sources such as coal, oil or gas, and secondly cuts the volume of waste to be disposed of through incineration to about one tenth.

In this way, the resources contained in waste materials are not lost, but become available again either as secondary raw materials or as secondary fuels.

# RELIABLE – ORGANISED – DURABLE. WASTE COLLECTION AND SEGREGATION WITH DURABIN.

Where collection and sorting of corporate waste is concerned, an orderly system is everything. DURABIN from DURABLE makes it easy to locate and deposit waste in the correct container. Colour coding facilitates identification, while additional signage is provided in the form of adhesive labels.

That means: order with a system – or simply: DURABIN.

## Waste collection and sorting

### Order within the smallest space - DURABIN 40

Our smallest model is particularly efficient in keeping order: DURABIN SQUARE 40 is the ideal waste bin for break rooms, kitchenettes or canteens. With a capacity of 40 litres and a pivoting coloured lid, the Durabin Square 40 is also ideal for the disposal or recycling of small quantities of waste. Bin liners can be inserted, to facilitate not only waste collection and sorting but also emptying of the bins. DURABIN SQUARE 40 is furthermore ideal for the storage of up to 40 litres of materials. The plastic container is particularly robust and suited for all pourable materials and blends, thanks to its practical pouring edge.



**DURABIN SQUARE 40**



e.g. for residual waste

e.g. for plastics

e.g. for paper/cardboard





**Size with a system – DURABIN 60**

Could it be a bit larger? Then this is a case for DURABIN 60. Its 60-litre capacity is ideal where larger quantities of waste are accumulated or the bin is not emptied every day. The tight fit of the coloured lid ensures that smells generally stay inside the bin. Thanks to their rectangular shape, several bins can be placed close to each other in a space-saving way and equipped with single or twin trolleys for easier transportation to the central waste collection points. DURABIN 60 is also ideally suited for all free-flowing and bulk materials, and with its range of different colours is also the perfect choice for storing materials for food processing.

**DURABIN 60**

**DURABIN TROLLEY 60**



e.g. for organic waste

e.g. for paper/ cardboard

e.g. for plastics

e.g. for residual waste



**Quality on a large scale – DURABIN 90**

The spacious containers are ideally suited for corporate waste collection, and can hold large quantities including bulky pieces of waste. Whether it be scrap metal, oily cleaning rags, glass waste or packaging materials, thanks to the colour identification code system of containers and lids, everything can be collected, correctly sorted and reliably fed into recycling processes. Here also, single and twin trolleys are available to facilitate transportation to the central waste collection point. Available in a wide range of different colours, our largest container is in demand for storage and transport of materials and blends in a great variety of product categories and production processes, like food, bulk and free-flowing materials.

**DURABIN 90**

**DURABIN TROLLEY 90**



e.g. for metals

e.g. for plastics

e.g. for paper/cardboard

e.g. for glass

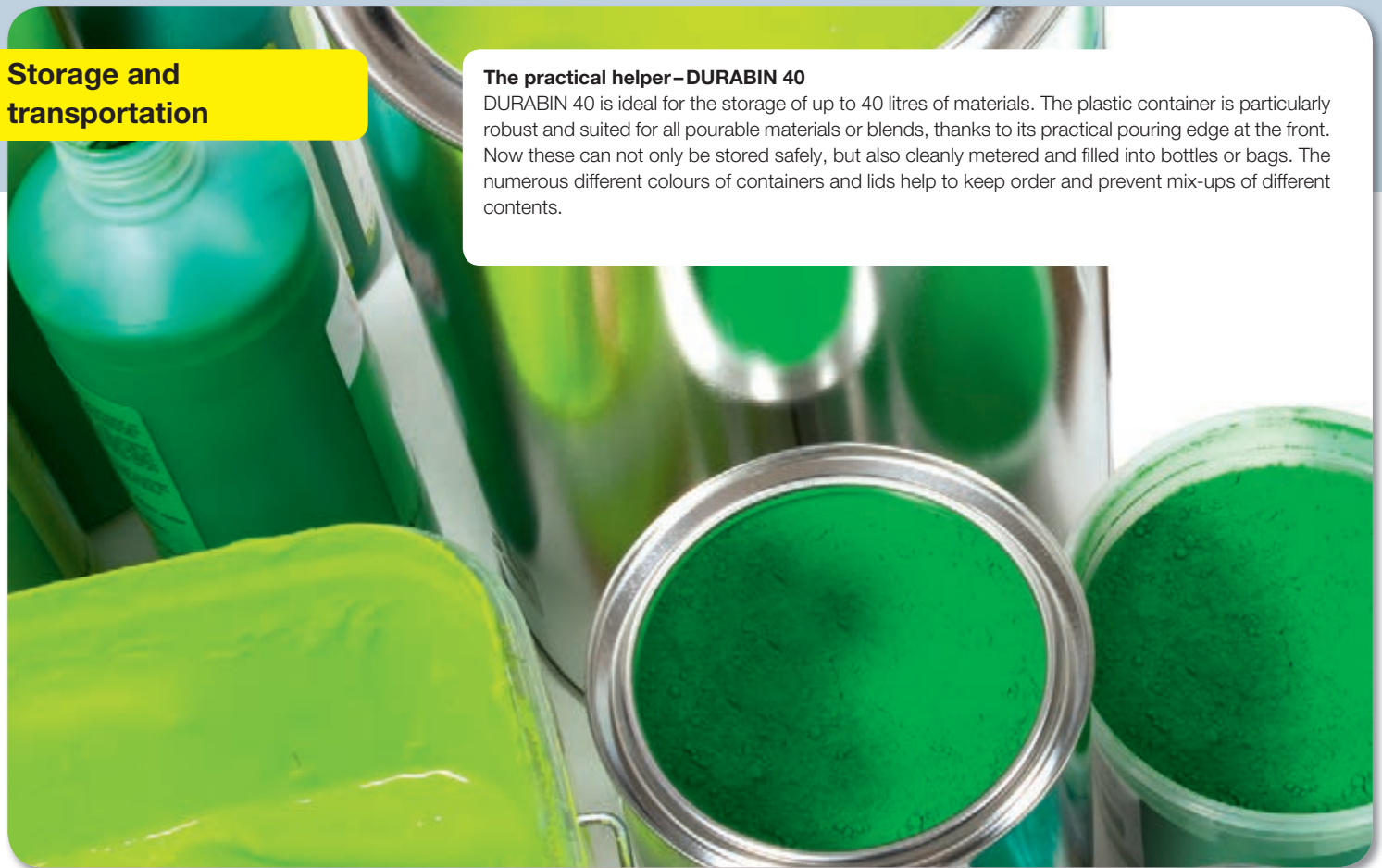
## HIGH QUALITY. FLEXIBLE. SAFE. STORAGE AND TRANSPORTATION WITH DURABIN.

When someone wants to store and transport corporate raw materials safely, they must be able to rely on the quality of the relevant containers. Here, DURABIN offers a wide range of different sizes and colours made of high-quality plastics, which are specially suited for storing free-flowing, pourable materials, including materials for food production. Their rectangular form enables space-saving storage and reliable transportation with matching trolleys.

### Storage and transportation

#### The practical helper – DURABIN 40

DURABIN 40 is ideal for the storage of up to 40 litres of materials. The plastic container is particularly robust and suited for all pourable materials or blends, thanks to its practical pouring edge at the front. Now these can not only be stored safely, but also cleanly metered and filled into bottles or bags. The numerous different colours of containers and lids help to keep order and prevent mix-ups of different contents.



**DURABIN SQUARE 40**



e.g. for powdered marble calcium carbonate

e.g. for green hematite

e.g. for azure blue phthalocyanine

**DURABIN SQUARE SET 40 WITH TROLLEY**





**The sturdy storage professional – DURABIN 60**  
DURABIN containers are absolutely food safe (according to the European standard 1935/2004/EC). Therefore DURABIN 60 is ideally suited for all free-flowing and bulk materials, and with its range of different colours also the perfect choice for storing materials for food processing. Sugar, flour or freeze-dried fruit can be stored safely here, including cold storage. Single and twin trolleys provide mobility. Its rectangular design enables space-saving storage.



**The great all-rounder – DURABIN 90**  
With its 90 litre capacity and space-saving, rectangular design, DURABIN 90 is well prepared to handle any commercial or industrial challenges. Available in a wide range of different colours, our largest container is in demand for storage and transport of materials and blends in a great variety of product categories and production processes, like food, bulk and free-flowing materials. For instance also the plastic granules or the coloured granulates and master batches or additives such as talcum and fibreglass used in processing plastics, for example PP, POM, ABS and PBT.



Product descriptions  
Colour codes  
Product codes



**1 | DURABIN ROUND 40**

40 litre round bin. With handles for easy transportation. Ideal for waste disposal, recycling and the storage of materials. Food safe in all colours excluding black (according to the European standard 1935/2004/EC). The black bin contains a high proportion of recycled material.

- # 1800519050    ▲ grey    📦 1 piece
- # 1800519221    ▲ black    📦 1 piece



Food safe according to the European standard 1935/2004/EC



**2 | DURABIN LID ROUND 40**

Lid for DURABIN ROUND 40 litre. With handles for easy transportation. Food safe in all colours excluding black (according to the European standard 1935/2004/EC). The black bin contains a high proportion of recycled material.

- # 1800520050    ▲ grey    📦 1 piece
- # 1800520221    ▲ black    📦 1 piece



**3 | DURABIN SQUARE 40**

Square bin 40 litres. Ideal for waste-disposal and recycling.

Dimensions: 590 x 320 x 360 (H x W x D)

- # 1800798010    ▲ white    📦 1 piece
- # 1800798050    ▲ grey    📦 1 piece



**4 | DURABIN LID SQUARE 40**

Lid for DURABIN 40 litres.

- # 1801621020    ▲ green    📦 1 piece
- # 1801621030    ▲ yellow    📦 1 piece
- # 1801621040    ▲ blue    📦 1 piece
- # 1801621050    ▲ grey    📦 1 piece
- # 1801621080    ▲ red    📦 1 piece



**5 | DURABIN FLIP 40**

Bin complete with flip-top lid. Volume 40 litres.

Dimensions: 747 x 320 x 366 mm (H x W x D)

- # 1809798010    ▲ white    📦 1 piece
- # 1809798050    ▲ grey    📦 1 piece



**6 | DURABIN FLIP LID SQUARE 40**

Practical flip lid for use with DURABIN SQUARE 40 litres.

- # 1801574011    ▲ white    📦 1 piece
- # 1801574012    ▲ green    📦 1 piece
- # 1801574013    ▲ yellow    📦 1 piece
- # 1801574014    ▲ blue    📦 1 piece
- # 1801574018    ▲ red    📦 1 piece
- # 1801574051    ▲ grey    📦 1 piece



**7 | DURABIN SQUARE TROLLEY DUO 40**

Trolley for two DURABIN 40 litres. Four reversible wheels for easy handling. Made from coated metal.

Dimensions: 185 x 270 x 665 mm (H x W x D)

- # 1801622010    ▲ white    📦 1 piece



**9 | DURABIN TROLLEY CONNECTOR**

Trolley connector for DURABIN trolleys. Simple to assemble. Easy to connect several trolleys to form a train.

- # 1801664010    ▲ white    📦 1 piece

1 |



**1 | DURABIN 60**

60 litre rectangular bin. With handles for easy transportation. Grip at the bottom of the bin make it easy and secure to empty. Ideal for waste disposal, recycling and the storage of materials. Pre-cut slots in the four corners of the rim secure waste bags in place. Food safe in all colours excluding black (according to the European standard 1935/2004/EC). The black bin contains a high proportion of recycled material.

Dimensions: 590x282x600 mm (HxWxD)

# 1800496010	white	1 piece
# 1800496020	green	1 piece
# 1800496040	blue	1 piece
# 1800496050	grey	1 piece
# 1800496221	black	1 piece



1 |



**1 | DURABIN LID 60**

Lid for DURABIN 60 litre bin complete with top lifting handle for easy removal. Food safe in all colours excluding black (according to the European standard 1935/2004/EC.) The black bin lid contains a high proportion of recycled material.

# 1800497010	▲ white	📦 1 piece
# 1800497020	▲ green	📦 1 piece
# 1800497030	▲ yellow	📦 1 piece
# 1800497040	▲ blue	📦 1 piece
# 1800497050	▲ grey	📦 1 piece
# 1800497210	▲ brown	📦 1 piece
# 1800497221	▲ black	📦 1 piece

2 |



**2 | DURABIN HINGED LID 60**

Rectangular frame with hinged lid for DURABIN 60's. The lid is easy to attach to all DURABIN 60 bins and the clip-on hinge gives the lid a firm grip onto the bin. Fixable opening angle of the lid makes it easy to handle.

# 1800500050	▲ 10 grey
📦 1 per box	

3 |



**3 | DURABIN LID WITH TWO HOLES**

Lid with two circular holes for the disposal of bottles or cans. Suitable for use with the DURABIN 60.

# 1809497020	▲ green
📦 1 piece	

4 |



**4 | DURABIN LID 60 WITH SLOT FOR PAPER/CARD**

Lid for DURABIN 60 litre bin. Lid is complete with a slot cut-out for the disposal of paper or cardboard.

# 1809498040	▲ 06 blue
📦 1 per box	

5 |



**5 | DURABIN TROLLEY 60**

Trolley for one DURABIN 60 litre. Four reversible wheels for easy handling. Made from coated metal.

Dimensions: 180x260x470 mm (HxWxD)	
# 1801666010	▲ white
📦 1 piece	

6 |



**6 | DURABIN 60 WALL MODULE**

Mounting kit for fastening a DURABIN 60 to the wall.

# 1801665010	white
📦 1 piece	

7 |



**7 | DURABIN TROLLEY DUO 60**

Trolley for two DURABIN 60 litre. Four reversible wheels for easy handling. Made from coated metal.

Dimensions: 180x480x540 mm (HxWxD)	
# 1801667010	▲ white
📦 1 piece	

1 |



**1 | DURABIN 90**

90 litre square bin. With handles for easy transportation. Ideal for waste disposal, recycling and the storage of materials. Food safe in all colours excluding black (according to the European standard 1935/2004/EG). The black bin contains a high proportion of recycled material.

Dimensions: 510 x 487 x 630 mm (HxWxD)

# 1800474010	▲ white	📦 1 piece
# 1800474020	▲ green	📦 1 piece
# 1800474040	▲ blue	📦 1 piece
# 1800474050	▲ grey	📦 1 piece
# 1800474221	▲ black	📦 1 piece

2 |



**2 | DURABIN LID 90**

Lid for DURABIN 90 litre. With handles for easy transportation. Food safe in all colours excluding black (according to the European standard 1935/2004/EG). The black bin lid contains a high proportion of recycled material.

# 1800475010	▲ white	📦 1 piece
# 1800475020	▲ green	📦 1 piece
# 1800475030	▲ yellow	📦 1 piece
# 1800475040	▲ blue	📦 1 piece
# 1800475050	▲ grey	📦 1 piece
# 1800475210	▲ brown	📦 1 piece
# 1800475221	▲ black	📦 1 piece



3 |



**3 | DURABIN TROLLEY 90**

Trolley for one DURABIN 90 litre. Four reversible wheels for easy handling. Made from coated metal.

Dimensions: 385 x 395 x 180 mm (HxWxD)

# 1801668010	▲ white	📦 1 piece
--------------	---------	-----------

4 |



**4 | DURABIN TROLLEY DUO 90**

Trolley for two DURABIN 90 litre. Four reversible wheels for easy handling. Made from coated metal. Dimensions: 180 x 400 x 870 mm (HxWxD)

# 1801669010	▲ white	📦 1 piece
--------------	---------	-----------

## ORDER IN FORM AND FUNCTION. WASTE PAPER BINS FOR OFFICE AND HOME USE.

Even though our world is turning more and more digital, a lot of waste paper still accumulates in offices. Fine, if that lands in waste paper baskets that are not only functional but also attractively designed. DURABLE offers a great variety of designs made of high-quality plastics and elegant sheet steel for both corporate and home offices—and since we take waste sorting seriously, this also includes models with two containers in one.

### **Designed for daily use. Plastic waste paper baskets.**

Whether functional like OPTIMO, unobtrusively elegant like BASIC or colourful and attractively designed like TREND, our various waste paper basket models feature modern design, functional form and good workmanship. Made of easy-to-clean, sturdy plastic materials and either round or rectangular in shape, they provide a place for the small quantities of waste generated in typical daily office work. And thus create order in administration, production office or warehouse office or within our own four walls at home



**WASTE BASKET TREND**



**WASTE BASKET OPTIMO**



**WASTE BASKET BASIC**







**Providing the perfect look.**

Waste paper baskets made of sheet steel. They add a special, stylish touch to your office interior: the DURABLE range of perfectly designed and extremely sturdy metal waste paper baskets stands out by its simple elegance and prestigious design. In either rectangular or classic round form, the colour chart alone speaks its own design language, ranging from metallic silver to grey and black. Some models provide an additional visual highlight with rings in two widths perforated with hole patterns.

**WASTE BASKET  
STAINLESS STEEL ROUND 15**



**WASTE BASKET  
METAL ROUND 15/P 165**



**WASTE BASKET METAL  
SQUARE 18.5/P 165**



**Separated in a single unit. Spacious waste paper basket with DURABIN MINI.**

There are some corporate departments where somewhat larger quantities of waste paper accumulate. Next to the copier, wherever incoming mail or incoming goods are processed – and where mail and goods are dispatched. Here, a 30-litre container, which easily holds large quantities of paper, proves its worth. A useful companion is DURABIN MINI, which makes waste sorting possible in a minimum of space: the small bin is clipped into the larger one to collect paper clips and staples which should be kept separate from the waste paper.

**WASTE BASKET  
METAL ROUND 30**



**DURABIN MINI**



Product descriptions  
Colour codes  
Product codes



**1 | WASTE BASKET OPTIMO**  
Classic square waste basket for office use.  
Volume: 18 litres.  
Dimensions: 320x300x300 mm (HxWxD)  
# 1701579221    black  
1 piece



**2 | WASTE BASKET BASIC**  
Waste basket for office use. Volume: 13 litres.  
Dimensions: Ø 290 mm, height 320 mm  
# 1701572010    white  
1 piece  
# 1701572221    black  
1 piece



**3 | WASTE BASKET TREND**  
Waste basket for office use. Volume: 16 litres.  
With grips for easy handling.  
Dimensions: Ø 315mm, height 330 mm  
# 1701710008    translucent light pink  
1 piece  
# 1701710010    white  
1 piece  
# 1701710014    translucent light blue  
1 piece  
# 1701710017    translucent light green  
1 piece  
# 1701710020    green  
1 piece  
# 1701710034    pink  
1 piece  
# 1701710040    blue  
1 piece  
# 1701710060    black  
1 piece  
# 1701710080    red  
1 piece  
# 1701710400    transparent  
1 piece  
# 1701710540    translucent blue  
1 piece  
# 1701710992    translucent purple  
1 piece



**4 | WASTE BASKET ECONOMY**  
Waste basket for office use. Volume: 12,5 litres.  
Dimensions: Ø 286 mm, height 280 mm  
# 1701573221    black  
1 piece



**5 | DURABIN MINI**  
Minibin for recycling. Suitable for most wastepaper baskets.  
Dimensions: Ø 140 mm, height 150 mm  
# 1701707060    black  
1 piece

1 |



**1 | WASTE BASKET METAL ROUND 15 D**

Waste basket, round, 15 litres. Freestanding metal bin with decorative embossed ring. Made of steel with scratch resistant epoxy polyester coating.

Dimensions: 315x260 mm (HxØ)

# 3304    01 black, 16 beige

1 piece

2 |



**2 | WASTE BASKET METAL ROUND 15**

Waste basket, round, 15 litres. Freestanding, stylish metal bin. Ideal for home and office use. Made of steel with scratch resistant epoxy polyester coating.

Dimensions: 315x260 mm (HxØ)

# 3301    01 black, 10 grey, 23 silver, 58 charcoal

1 piece

3 |



**3 | WASTE BASKET METAL ROUND 15/P 30**

Waste basket, round, with 30 mm perforated ring, 15 litres. Made of steel with scratch resistant epoxy polyester coating.

Dimensions: 315x260 mm (HxØ)

# 3300    01 black, 10 grey, 23 silver, 58 charcoal

1 piece

4 |



**4 | WASTE BASKET METAL ROUND 15/P 165**

Waste basket, round, with 165 mm perforated ring, 15 litres. Made of steel with scratch resistant epoxy polyester coating.

Dimensions: 315x260 mm (HxØ)

# 3310    01 black, 10 grey, 23 silver, 58 charcoal

1 piece

5 |



**5 | WASTE BASKET STAINLESS STEEL ROUND 15**

High quality brushed stainless steel waste basket. For long-term use. Suitable for internal or sheltered external use. Environmentally friendly material (from >50% recycled post consumer waste and is 100% recyclable). Capacity: 15 litres.

Dimensions: 315x260 mm (HxØ)

# 3372    23 silver

1 piece

6 |



**6 | WASTE BASKET STAINLESS STEEL ROUND 15/P 165**

High quality brushed stainless steel, with 165 mm perforated ring, for long-term use. Suitable for internal or sheltered external use. Environmentally friendly material (from >50% recycled post consumer waste and is 100% recyclable). Capacity: 15 litres.

Dimensions: 315x260 mm (HxØ)

# 3381    23 silver

1 piece



7 |



**7 | WASTE BASKET METAL ROUND 30**

Waste basket, round, 30 litres. Freestanding, stylish metal bin. Ideal for home and office use. Made of steel with scratch resistant epoxy polyester coating.

Dimensions: 450x315 mm (HxW)

# 3303    01 black, 10 grey

1 piece

8 |



**8 | WASTE BASKET METAL SQUARE 18.5**

Waste basket, square with rounded edges. No perforation, 18.5 litres. Made of steel with scratch resistant polyester coating.

Dimensions: 240x320 mm (WxH)

# 3315    01 black

1 piece

9 |



**9 | WASTE BASKET METAL SQUARE 18.5/P 30**

Waste basket, with 30 mm perforated ring, 18.5 litres. Square with rounded edges. Made of steel with scratch resistant polyester coating.

Dimensions: 320x240 mm (HxW)

# 3320    01 black, 23 silver

1 piece

10 |



**10 | WASTE BASKET METAL SQUARE 18.5/P 165**

Waste basket, with 165 mm perforated ring, 18.5 litres. Square with rounded edges. Made of steel with scratch resistant polyester coating.

Dimensions: 320x240 mm (HxW)

# 3321    01 black, 23 silver

1 piece

# SAFETY AND SERVICE WITHOUT COMPROMISE. SOLUTIONS FOR PUBLIC AREAS.

The more stringent the demands on an environment with a high visitor frequency, the higher the quality standards for intelligent concepts must be. Therefore we at DURABLE have developed special product solutions for public areas which enhance safety and service to the public. For hotel lobbies, bank service halls, railway stations and airports – or smoking areas.

### Here, fire protection is the first priority. Waste paper bins with fire extinguishing lids.

When the call to board the next taxi, train or plane comes and urges people to hurry, many a cigarette lands in the waste paper bin, still alight. To ensure fire safety in public areas, waste paper bins with fire extinguishing lids are required by law. DURABLE offers these, including models with an integrated ash tray made of high-quality, durable steel sheet with special safety features and in different sizes. The lids come with a special structure which extinguishes the fire source and offers preventive fire protection, which is guaranteed by the TÜV GS mark (which stands for “safety-tested”).

WASTE BASKET SAFE ROUND



WASTE BASKET SAFE+ ROUND





**Inviting rooms guaranteed. Waste paper bins with ash-tray attachment.**

The entrance area is a building's business card. This applies to corporate premises just as much as to hotels, railway stations and airports. To keep smoking areas and reception areas clean and tidy, DURABLE offers waste paper bins with ash-trays and wall ash-trays for interiors and protected outdoor areas in round or angled design and in different colours. For safe burn-out of the cigarette butts, the ash-tray attachment on the waste paper bin is filled with sand. However, all easily detachable inserts are easy to empty and easy to clean.

**ASHTRAY WALL MOUNTED METAL 2.5**



**WASTE BASKET STEEL WITH ASHTRAY ROUND**



**WASTE BASKET METAL WITH SQUARE ASHTRAY**



**Always there when they are needed. Corner and semi-circle waste paper bins..**

Nothing is more tiresome than having to look for a waste paper bin. Whether for newspapers, fast food packaging or small consumer goods. Therefore it makes sense in public buildings to fasten waste paper bins in semi-circular or quarter-circular form to walls and corners where convenient to provide quick and practical waste disposal facilities for visitors and customers. Last but not least, umbrella stands for entrance and reception areas are also available.

**WASTE BASKET SEMI-CIRCLE 20/P 165**



**WASTE BASKET CORNER 16/P 165**



**UMBRELLA STAND METAL ROUND 28.5**



Product descriptions  
Colour codes  
Product codes

**1 | UMBRELLA STAND METAL ROUND 28.5**

High quality and stylish with decorative perforated rim. Made of Steel. Ideal for entrance areas, at home, offices and stores. 28.5 litres. Dimensions: 620x260 mm (HxØ)

# 3350    01 black, 23 silver, 58 charcoal    1 piece



**2 |**



**2 | UMBRELLA STAND STAINLESS STEEL ROUND 28.5**

High quality brushed stainless steel stand with decorative perforation. For long-term use. Anti-slip base also provides floor protection. Suitable for internal or sheltered external use. Environmentally friendly material (from >50% recycled post consumer waste and is 100% recyclable). Capacity: 28.5 litres.

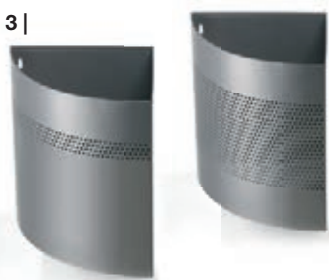
Dimensions: 620x260 mm (HxØ)

# 3371    23 silver

1 piece



**3 |**



**3 | WASTE BASKET CORNER 16/P 30**

Waste basket, square, with 30 mm perforated ring, 16 litres. Made from steel with scratch resistant epoxy polyester coating. Freestanding. Dimensions: 320x250x250 mm (HxWxD)

# 3328    23 silver    1 piece

**3 | WASTE BASKET CORNER 16/P 165**

Waste basket, square, with 165 mm perforated ring, 16 litres.

# 3329    23 silver    1 piece

**4 |**



**4 | WASTE BASKET SEMI-CIRCLE 20/P 30**

Waste basket, semi-circle with 30 mm perforated ring, 20 litres. Made of steel with scratch resistant epoxy polyester coating. Ideal for wall-mounting in hallways and in waiting areas. Dimensions: 320x415x210 mm (HxWxD)

# 3316    23 silver    1 piece

**4 | WASTE BASKET SEMI-CIRCLE 20/P 165**

Waste basket, semi-circle with 165 mm perforated ring, 20 litres.

# 3317    23 silver    1 piece



**5 |**



**5 | WASTE BASKET SAFE ROUND 15**

Waste baskets with fire extinguishing lid provide preventative fire protection. Self-extinguishing aluminum lid will disrupt the oxygen flow inside the bin and suffocate flames early on. Made from steel with scratch resistant epoxy polyester coating. 15 litres. Dimensions: 357x260 mm (HxØ)

# 3305    01 black, 10 grey, 23 silver

1 piece

**6 |**



**6 | WASTE BASKET STAINLESS STEEL SAFE ROUND 15**

Stainless steel bin with extinguishing lid which provides preventative fire protection. High quality brushed stainless steel for long-term use. Suitable for internal or sheltered external use. Environmentally friendly material (from >50% recycled post consumer waste and is 100% recyclable). Capacity: 15 litres. Dimensions: 375x260 mm (HxØ)

# 3376    23 silver

1 piece

**7 |**



**7 | WASTE BASKET SAFE ROUND 30**

Waste baskets with fire extinguishing lid provide preventative fire protection. Self-extinguishing aluminum lid will disrupt the oxygen flow inside the bin and suffocate flames early on. Made from steel with scratch resistant epoxy polyester coating. 30 litres. Dimensions: 492x315 mm (HxØ)

# 3306    01 black, 10 grey

1 piece

**7 | WASTE BASKET SAFE ROUND 60**

60 litres. Dimensions: 662x375 mm (HxØ)

# 3307    01 black, 10 grey

1 piece



**8 |**



**8 | WASTE BASKET SAFE+ ROUND 15**

Waste baskets with fire extinguishing lid provide preventative fire protection. Self-extinguishing aluminum lid will disrupt the oxygen flow inside the bin and suffocate flames early on. TÜV certified, a crucial and recognised product safety certification. Made of steel with scratch resistant epoxy polyester coating. 15 litres.

Dimensions: 375x260 mm (HxØ)

# 3325    01 black, 03 red, 10 grey, 16 beige

1 piece

**8 | WASTE BASKET SAFE+ ROUND 30**

30 litres. Dimensions: 510x315 mm (HxØ)

# 3326    01 black, 03 red, 10 grey, 16 beige

1 piece

**8 | WASTE BASKET SAFE+ ROUND 60**

60 litres. Dimensions: 680x375 mm (HxØ)

# 3327    01 black, 03 red, 10 grey, 16 beige

1 piece

1 |



**1 | WASTE BASKET METAL WITH ASHTRAY ROUND**

Functional 17 litre metal waste bin with a 2 litre ashtray. Suitable for internal or sheltered external use. Removable inner container and ashtray for easy cleaning and safe waste disposal. Includes wire insert and 1.5 kg of silver sand for ashtray use. Ideal for designated smoking areas and at entrances.

Dimensions removable ashtray: 60x240 mm (HxØ)  
Dimensions paper opening: 190x125 mm (WxH)  
Dimensions inner container: 380x220 mm (HxØ)  
Product dimensions: 620x260 mm (HxØ)

# 3330    01 black, 23 silver, 58 charcoal    1 piece

**3 | SAND REFILL**

Sand for ashtray insert. Refill bag of 1.5 kg sand, for ashtrays 3330 and 3331.

# 3335    16 beige  
1 piece

2 |



**2 | WASTE BASKET STAINLESS STEEL WITH ASHTRAY ROUND**

High quality brushed stainless steel stand for long-term use. Stylish and functional 17 litre bin with a 2 litre ashtray. Removable inner container and ashtray for easy cleaning. Anti-slip base also provides floor protection. Suitable for internal or sheltered external use. Environmentally friendly material (from >50% recycled post consumer waste and is 100% recyclable). Includes inner container, ashtray with wire insert and 1.5 kg of silver sand for ashtray use. Capacity: 17 litre bin with 2 litre ashtray.

Dimensions: 620x260 mm (HxØ)

# 3373    23 silver    1 piece

6 |



**6 | ASHTRAY KULAN**

Ashtray with sealed removable lid. Traps smoke and odours. In flame-resistant melamine.

Dimensions: Ø 130 mm, height 60 mm

# 1799021000    black  
1 piece

4 |



**4 | WASTE BASKET METAL WITH SQUARE ASHTRAY**

Functional 17 litre metal waste bin with a 2 litre ashtray and 2 side openings for easy access. Removable inner container and ashtray for easy cleaning and safe waste disposal. Suitable for internal or sheltered external use. Includes wire insert and 1.5 kg of silver sand for ashtray use. Ideal for designated smoking areas and at entrances.

Dimensions removable ashtray: 50x240 mm (HxØ)  
Dimensions paper opening: 180x130 mm (WxH)  
Dimensions inner container: 380x220 mm (HxØ)  
Product dimensions: 620x250 mm (HxØ)

# 3331    01 black, 23 silver, 58 charcoal    1 piece

5 |



**5 | WASTE BASKET SAFE WITH ROUND ASHTRAY**

Stylish 17 litre metal waste bin with a 2 litre ashtray and extinguisher to provide preventative fire protection. Its self extinguishing aluminium lid will disrupt the oxygen flow inside the bin and suffocate flames early on. Removable inner container and ashtray for easy cleaning and safe waste disposal. Suitable for internal or sheltered external use. Ideal for designated smoking areas and at entrances. Dimensions extinguisher: 60x240 mm (HxØ)

Dimensions paper opening: 150x125 mm (WxH)  
Dimensions inner container: 380x220 mm (HxØ)  
Product dimensions: 630x250 mm (HxØ)

# 3332    01 black, 23 silver, 58 charcoal    1 piece

7 |



**7 | ASHTRAY WALL MOUNTED METAL 2.5**

Steel wall mountable ashtray with strong epoxy polyester coating. Lockable, includes two keys, easy to clean. Ideal solution for the safe and efficient disposal of cigarette butts and unsightly litter caused by cigarettes. Suitable for sheltered external use. Product can be easily hung on the wall. 2.5 litres. Dimensions: 275x205x80 mm (HxWxD)

# 3333    01 black  
1 piece

9 |



**9 | ASHTRAY WALL STAINLESS STEEL 4**

Stainless steel wall mountable ashtray. Product can be easily mounted to the wall. Removable inner container for easy waste disposal. Includes two keys. Ideal solution for the safe and efficient disposal of cigarette butts and unsightly litter caused by cigarettes. Suitable for external use. 4 litres.

Dimensions: 450x310x107 mm (HxWxD)

# 3382    23 silver  
1 piece

8 |



**8 | ASHTRAY WALL METAL 4**

Steel wall mountable ashtray with strong epoxy polyester coating. Product can be easily mounted to the wall. Removable inner container for easy waste disposal. Includes two keys. Ideal solution for the safe and efficient disposal of cigarette butts and unsightly litter caused by cigarettes. Suitable for sheltered external use. 4 litres.

Dimensions: 450x310x107 mm (HxWxD)

# 3334    23 silver  
1 piece

# MORE PRODUCTS FOR TRADE AND COMMERCE.

Professionalism of materials is a top priority in the cleaning trade. The sturdy buckets from DURABLE made of high-quality, heavy-duty plastics are available in three convenient sizes and offer high functionality together with ergonomic handling - attributes also present in our shopping baskets. Trolleys facilitate their transport and handling in the supermarket.

### **A clean proposition all round. Buckets from DURABLE.**

Buckets from DURABLE meet the high standards set for working in the professional cleaning sector. With capacities of 9.5, 14 or 28 litres in different colours, they are indispensable accessories which can also be integrated as flexible elements in commercially available cleaning transport systems. Of course they are also suitable for safe transport of any liquids or solid materials. Buckets from DURABLE: ergonomical in handling and extremely robust in application.







**Here is where buyers like to buy. Shopping baskets from DURABLE.**

Today, shopping baskets are a standard service provided by every supermarket to customers who don't want to push a large shopping trolley around. For this purpose, DURABLE offers sturdy, attractive shopping baskets in two sizes: the smaller SHOPPING BASKET 19 and the larger basket, which holds 27 litres. Matching trolleys enable easy transport of stacked empty baskets in both sizes.

**TROLLEY 19 WITH SHOPPING BASKET 19**



Product descriptions  
Colour codes  
Product codes

1 |



**1 | BUCKET 9,5**

Square shaped, stable bucket with easy-grip handle for easy transportation.

Dimensions: 245x250x250 mm (HxWxD)

# 1809413040 ▲ blue

📦 1 piece

# 1809413080 ▲ red

📦 1 piece

2 |



**2 | BUCKET 14**

Square shaped, stable bucket with easy-grip handle for easy transportation.

Dimensions: 280x285x285 mm (HxWxD)

# 1809414040 ▲ blue

📦 1 piece

# 1809414080 ▲ red

📦 1 piece

3 |



**3 | BUCKET 28**

Square shaped, stable bucket with 2 easy-grip handle for easy transportation.

Dimensions: 280x530x320 mm (HxWxD)

# 1809643040 ▲ blue

📦 1 piece

# 1809643080 ▲ red

📦 1 piece

4 |



**4 | SHOPPING BASKET 19**

Stable, firm and stackable shopping basket in polypropylene with easy-grip nylon handle.

Dimensions: 249x400x300 mm (HxWxD)

# 1801565040 ▲ blue

📦 1 piece

# 1801565060 ▲ black

📦 1 piece

# 1801565080 ▲ red

📦 1 piece

5 |



**5 | SHOPPING BASKET 27**

Stable and robust 27 litre stackable shopping basket. Made from polypropylene with easy-grip nylon handle.

Dimensions: 249x480x330 mm (HxWxD)

# 1801696060 ▲ black

📦 1 piece

6 |



**6 | TROLLEY SHOPPING BASKET 19**

Galvanized carrier with reversible wheels.

Dimensions: 200x340x420 mm (HxWxD)

# 1801565000 ▲ silver

📦 1 piece

7 |



**7 | TROLLEY SHOPPING BASKET 27**

Galvanized carrier for 27 litre shopping basket. With reversible wheels.

Dimensions: 228x496x365 mm (HxWxD)

# 1801696000 ▲ silver

📦 1 piece







**DURABLE · Hunke & Jochheim GmbH & Co. KG**

Westfalenstraße 77-79 · 58636 Iserlohn  
Postfach 1753 · 58634 Iserlohn  
Telefon (02371) 662-0 · Telefax (02371) 662-221  
durable@ durable.de · www.durable.de

**INTERNATIONAL**

DURABLE · Hunke & Jochheim GmbH & Co. KG  
Westfalenstraße 77-79 · 58636 Iserlohn  
P.O. Box 1753 · 58634 Iserlohn · Germany  
Phone ++49-2371-662-0 · Fax ++49-2371-662-221  
durable@ durable.de · www.durable.de

**FR**

DURABLE France S.A.S  
Immeuble Le Tryalis · 9, rue de Rosny  
93100 Montreuil  
Téléphone : 01 48 12 10 90 · Télécopie : 01 48 55 05 09  
serviceclients@durable.fr · www.durable.fr

**NL**

DURABLE Nederland B.V.  
Taxandriaweg 8c · 5141 PA Waalwijk  
Tel. 0416 543 543 · Fax 0416 543 058  
durable@durable.nl · www.durable.nl

**PL**

Biuro Obsługi Klienta DURABLE Polska  
Al.Kasztanowa 10 · 72-005 Przeclaw  
Tel: 091 432-40-70 · Fax: 091 432-40-83  
bok@durable.pl · www.durable.pl

**SE**

DURABLE SCANDINAVIA AB  
Fågelsångsvägen 4B · 186 42 Vallentuna  
Box 4 · 186 21 Vallentuna  
Telefon: 08 - 630 11 50 · Fax: 08 - 630 02 22  
info@durable.se · www.durable.se

**UK**

DURABLE (UK) Ltd.  
10 Nimrod Way, Wimborne, Dorset, BH21 7SH  
Phone 01202 89 70 71 · Fax 01202 87 33 81  
customeroperations@durable-uk.com  
www.durable-uk.com

**BE**

DURABLE Belgium N.V./S.A.  
Industriepark 14/101 · 9031 Gent-Drongen  
Tel. 09/281 26 44/45 · Fax 09 281 26 29  
durable@durable.be · www.durable.be

**IT**

DURABLE Italy  
Via Al Rocco, 58 · 23824 Dervio (LC)  
Tel: 0341 592231 · Fax: 0341 804325  
info@durable.it · www.durable.eu

**RU**

Представительство фирмы DURABLE в России  
Москва, 125438,  
ул. Михалковская, дом 63Б корп. 3  
Тел\Факс: +7 495 601 9213  
durable\_russia@mail.ru · www.durable-russia.com

**US**

DURABLE Office Products Corp.  
1225-C N. Greenbriar Drive · Addison, IL 60101  
Voice: 800-273-3118 / 847-787-0100  
Fax: 847-787-0311  
customerservice@durableofficeproducts.com  
www.durableofficeproducts.com