

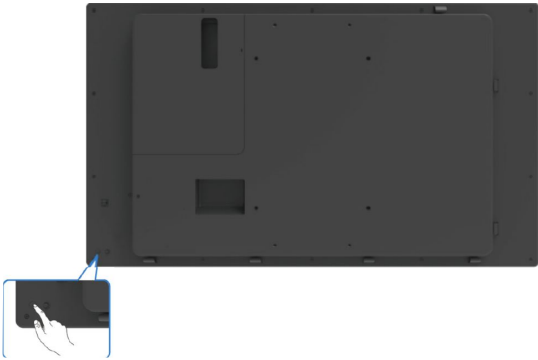
1. Disassembly Procedures:

Note:

This "Disassembly Procedures" is for EMEA only, not for other regions. Please note that Dell will deem warranty void if any disassembly is done on the monitors.

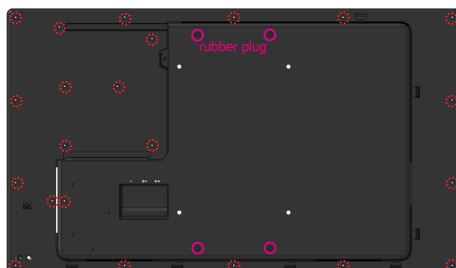
List of tools/equipment:

1. Philips-head screwdriver
2. Electric screwdriver
3. Hex-head screwdriver
4. Soldering iron and absorber

S1 Turn off power.**S2** Unplug external cables (power cable and video cable) and OptiPlex PC box (optional) from the monitor.

Loose the display back cover.

- a. Place the monitor on a soft cloth or cushion.
- b. Remove 22 screws (M3x4).
- c. Remove 4 rubbers plugs.
- d. Use a rework jip to insert the hole on the bottom side.
- e. Loose the back cover with Jip as indicated by arrow.
- f. Pull up the display back cover to by band.

S3

Remove the display back cover.

S4

- a. Disconnect joystick cable from main board.
- b. Remove the display back from panel.

**S5**

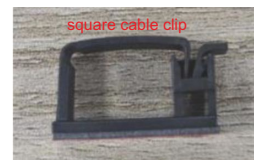
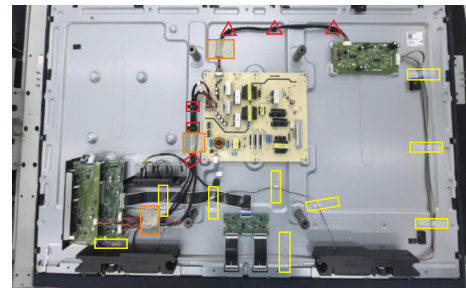
Remove joystick board from the back cover.

- a. Remove 2 screws (M3x5).
- b. Peel all tape on the key cable.

**S6**

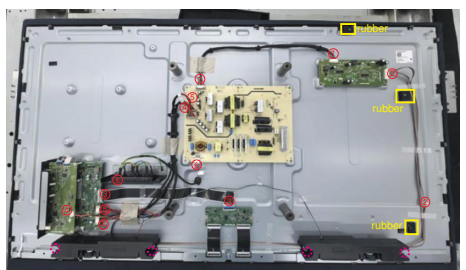
Remove all tapes and cable clips.

- a. Remove 3 strips of conductive tape.
- b. Remove 9 strips of white tape.
- c. Remove 6 cable clips.

**S7**

Remove two speakers and all cables.

- a. Remove 4 screws (M4x10) on two speakers.
- b. Peel 3 rubber plugs.
- c. Disconnect and remove all cables.

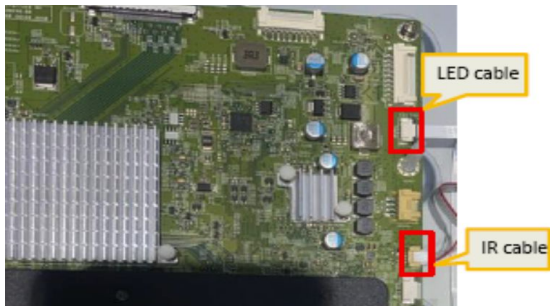




Disconnect IR cable and LED cable from PCBA.

S8

- Peel the tape of LED cable.
- Open the latch and pull out IR cable.
- Open the latch and pull LED cable.



Remove AC outlet.

S9

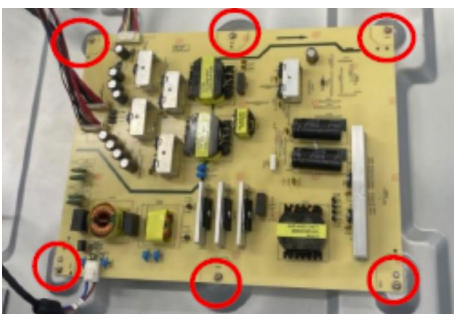
- Remove one screw (M3x6) to loose AC outlet.
- Remove one grounding screw (M4x8).
- Pull out all the cables.



Remove the driver board and power board.

S10

- Remove 4 screws (M3x6) on the driver board.
- Remove 6 screws (M3x6) on the power board.



Remove USB board and I/O cover.

S11

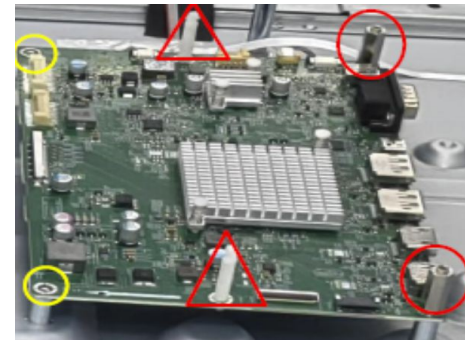
- Remove 2 Hex screws (M3x8) on VGA connector.
- Remove 2 screws (M3x6) on the USB board.
- Remove the I/O cover and USB board.



Remove main board.

S12

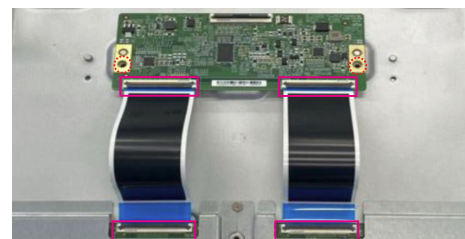
- Remove 2 screws (M3x6) on the main board.
- Remove two Hex socket standoffs (M3x6).
- Remove two plastic shelf on the main board.



Remove T-con board.

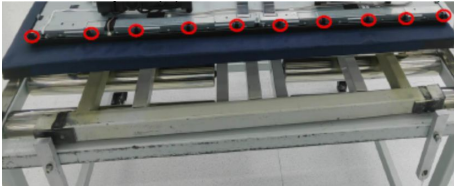
S13

- Remove 2 screws (M3x4) on the T-con board.
- Open the latch and disconnect the two FFC cable.



- S14** Loosen the bottom side of the front cover.

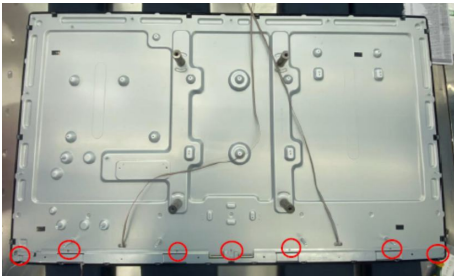
a. Remove 10 screws (M3x5).



- S15** Remove the shielding cover.

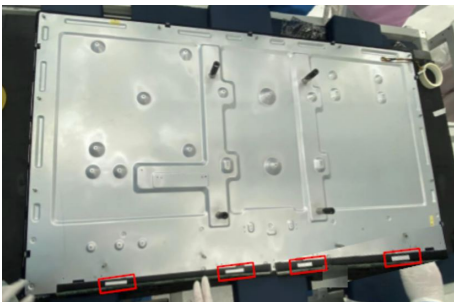
a. Remove 7 screws (M3x4).

b. Remove two shielding covers from bottom side.



- S16** Loosen PCBA of O/C module.

a. Peel the PCBA away from back bracket.



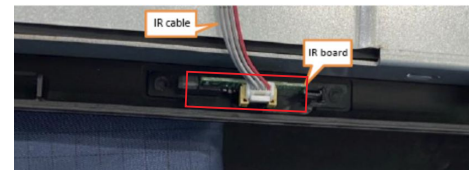
Remove the front cover.

- S17**
- Remove 4 screws (M3x4) on the top side.
 - Remove 3 screws (M3x4) on the left side.
 - Remove 3 screws (M3x4) on the right side.
 - Pull up the front cover by band to loose it.



Remove the LED board and IR board from front cover.

- S18**
- Remove the LED board from the lower left corner of the front cover.
 - Remove the IR board from the bottom side of the front cover.



Remove the OC module.

- S19** Take out the OC module from the middle frame by sucking tool.



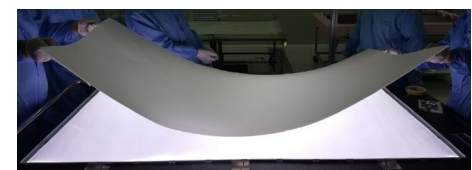
Remove the middle frame.

- S20**
- Pull up the middle frame by band to loose it from the back bracket.
 - Lift up the middle frame.



Remove the Diffuser and Prismatic lens.

- S21**
- Remove the Prismatic lens from Diffuser.
 - Remove the Diffuser from LGP.



S22

Remove LGP.

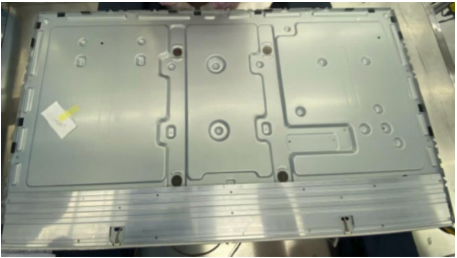
a. Remove LGP with a sucking tool.



S23

Remove the reflector film.

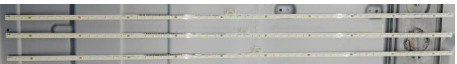
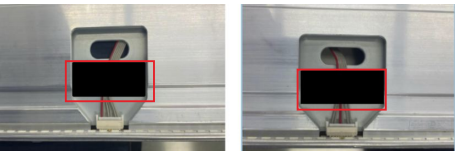
a. Remove a reflector film from the back bracket.



S23

Remove the light bar.

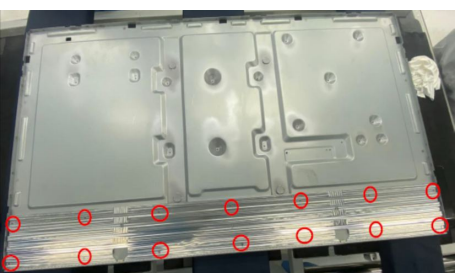
a. Peel the tape.
 b. Disconnect two Light bar cables.
 c. Peel the two light bar away from the heat sink.



S24

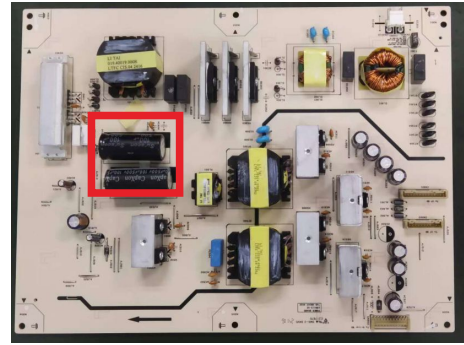
Remove the heat sink.

a. Remove 14 screws (M3x4) on heat sink.
 b. Remove the heat sink away from the back bracket.

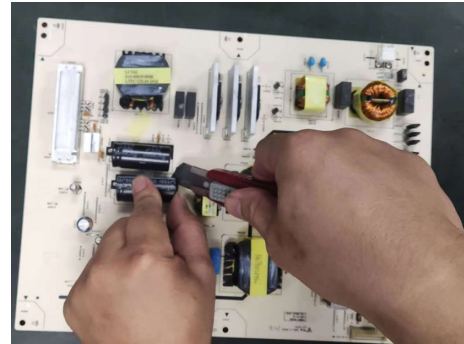


S25

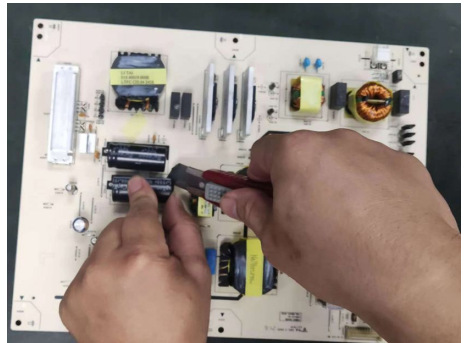
Remove electrolyte capacitors (red mark) from printed power board.



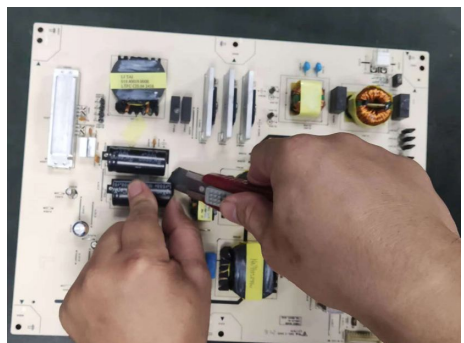
S25-1 Cut the glue between bulk cap. and PCB with a knife.



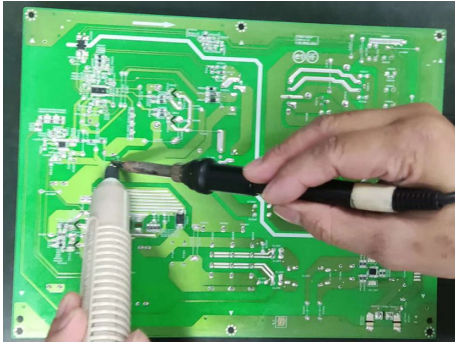
S25-2 Ensure cutting path within the glue, don't touch bulk cap. or PCB.



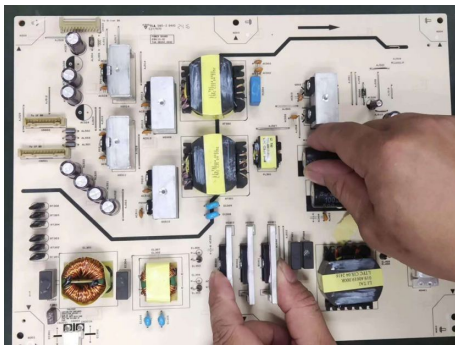
S25-3 Cut into the bottom of bulk cap. and pull it up carefully.



S25-4 Take out bulk cap. pin solder with soldering iron and absorber.



S25-5 Lift the bulk cap. up and away from the PCB.



2. Product material information:

The following substances, preparations, or components should be disposed of or recovered separately from other WEEE in compliance with Article 4 of EU Council Directive 75/442/EEC.

Capacitors or condensers (containing PCB/PCT)	Not used
Mercury containing components	Not used
Batteries	Not used
Printed circuit boards (with a surface greater than 10 square cm)	Product has printed circuit boards (with a surface greater than 10 square cm)
Component contain toner, ink and liquids	Not used
Plastic containing BFR	Not used
Component and waste contain asbestos	Not used
CRT	Not used
Component contain CFC, HCFC, HFC and HC	Not used
Gas discharge lamps	Not used
LCD display > 100 cm ²	Product has an LCD greater than 100 cm ²
External electric cable	Product has external cables
Component contain refractory ceramic fibers	Not used
Component contain radio-active substances	Not used
Electrolyte capacitors (height > 25mm, diameter > 25mm)	Product has electrolyte capacitors (height > 25mm, diameter > 25mm)